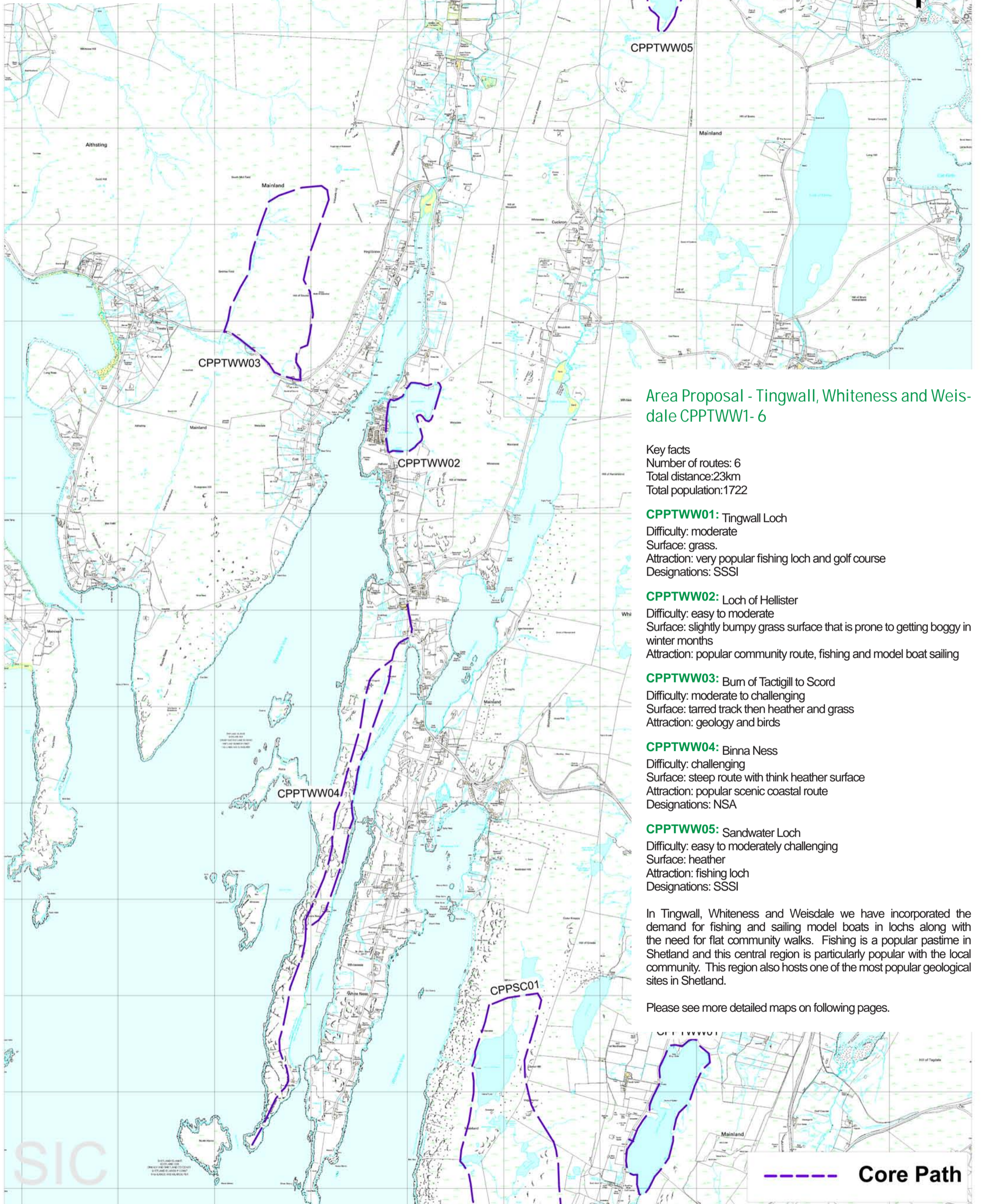


# SHETLAND CORE PATHS PLAN



## Area Proposal - Tingwall, Whiteness and Weisdale CPPTWW1- 6

**Key facts**  
 Number of routes: 6  
 Total distance: 23km  
 Total population: 1722

- CPPTWW01:** Tingwall Loch  
 Difficulty: moderate  
 Surface: grass.  
 Attraction: very popular fishing loch and golf course  
 Designations: SSSI
- CPPTWW02:** Loch of Hellister  
 Difficulty: easy to moderate  
 Surface: slightly bumpy grass surface that is prone to getting boggy in winter months  
 Attraction: popular community route, fishing and model boat sailing
- CPPTWW03:** Bum of Tactigill to Scord  
 Difficulty: moderate to challenging  
 Surface: tarred track then heather and grass  
 Attraction: geology and birds
- CPPTWW04:** Binna Ness  
 Difficulty: challenging  
 Surface: steep route with thick heather surface  
 Attraction: popular scenic coastal route  
 Designations: NSA
- CPPTWW05:** Sandwater Loch  
 Difficulty: easy to moderately challenging  
 Surface: heather  
 Attraction: fishing loch  
 Designations: SSSI

In Tingwall, Whiteness and Weisdale we have incorporated the demand for fishing and sailing model boats in lochs along with the need for flat community walks. Fishing is a popular pastime in Shetland and this central region is particularly popular with the local community. This region also hosts one of the most popular geological sites in Shetland.

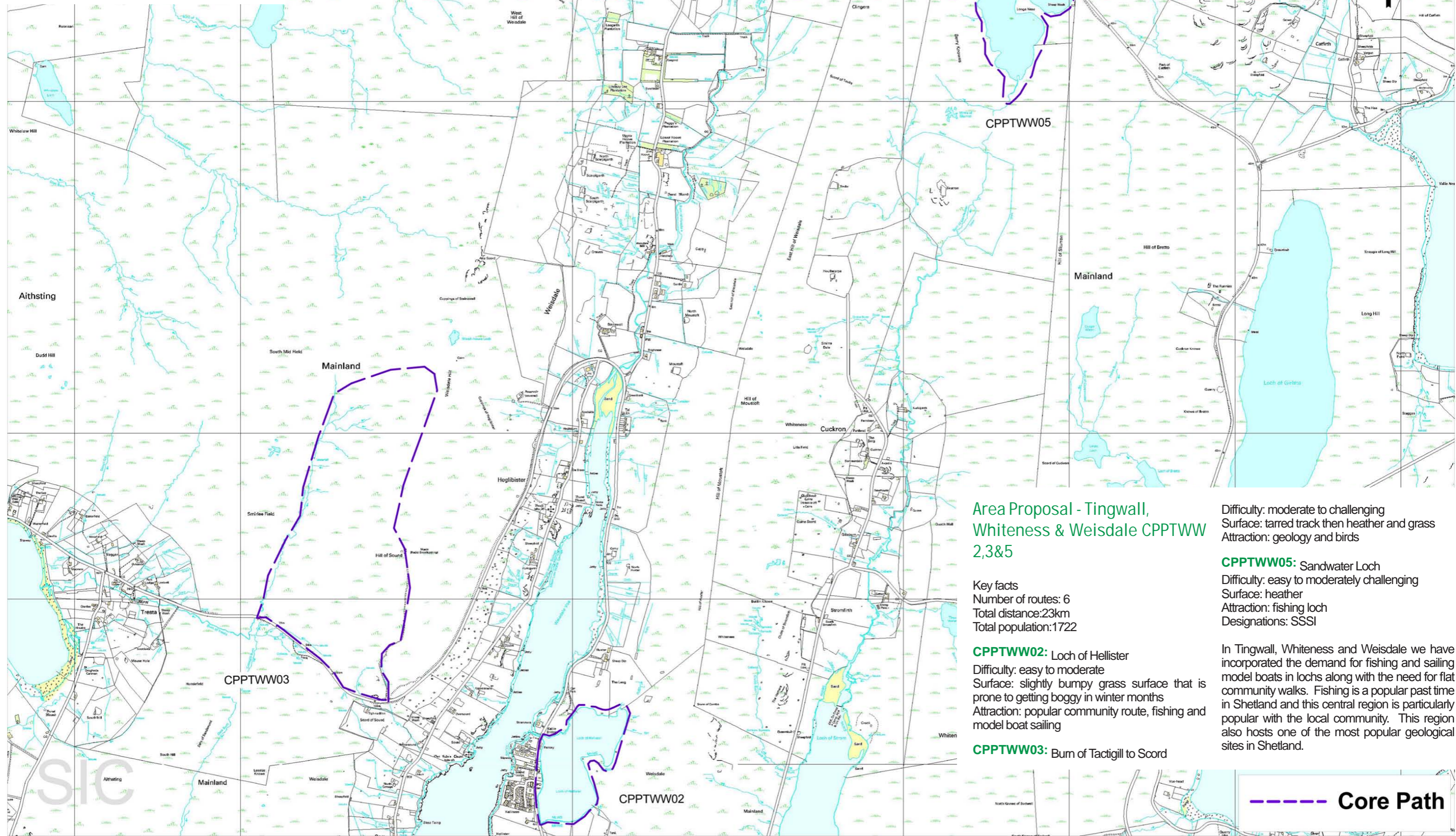
Please see more detailed maps on following pages.

**Core Path**

Shetland Islands Council Licence Number 100024344. 2008. This map is reproduced from Ordnance Survey material with the permission of Ordnance Survey on behalf of the Controller of Her Majesty's Stationery Office © Crown Copyright. Unauthorised reproduction infringes Crown copyright and may lead to prosecution or civil proceedings.

Date June 2008  
 Scale 1:35000

# SHETLAND CORE PATHS PLAN



## Area Proposal - Tingwall, Whiteness & Weisdale CPPTWW 2,3&5

Key facts  
 Number of routes: 6  
 Total distance: 23km  
 Total population: 1722

- CPPTWW02:** Loch of Hellister  
 Difficulty: easy to moderate  
 Surface: slightly bumpy grass surface that is prone to getting boggy in winter months  
 Attraction: popular community route, fishing and model boat sailing
- CPPTWW03:** Burn of Tactigill to Scord

- Difficulty: moderate to challenging  
 Surface: tarred track then heather and grass  
 Attraction: geology and birds
- CPPTWW05:** Sandwater Loch  
 Difficulty: easy to moderately challenging  
 Surface: heather  
 Attraction: fishing loch  
 Designations: SSSI

In Tingwall, Whiteness and Weisdale we have incorporated the demand for fishing and sailing model boats in lochs along with the need for flat community walks. Fishing is a popular past time in Shetland and this central region is particularly popular with the local community. This region also hosts one of the most popular geological sites in Shetland.



Shetland Islands Council Licence Number 100024344. 2008. This map is reproduced from Ordnance Survey material with the permission of Ordnance Survey on behalf of the Controller of Her Majesty's Stationery Office © Crown Copyright. Unauthorised reproduction infringes Crown copyright and may lead to prosecution or civil proceedings.

Date June 2008  
 Scale 120000

# SHETLAND CORE PATHS PLAN



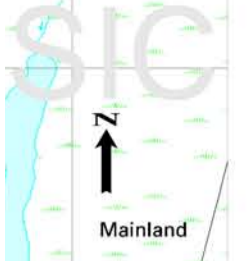
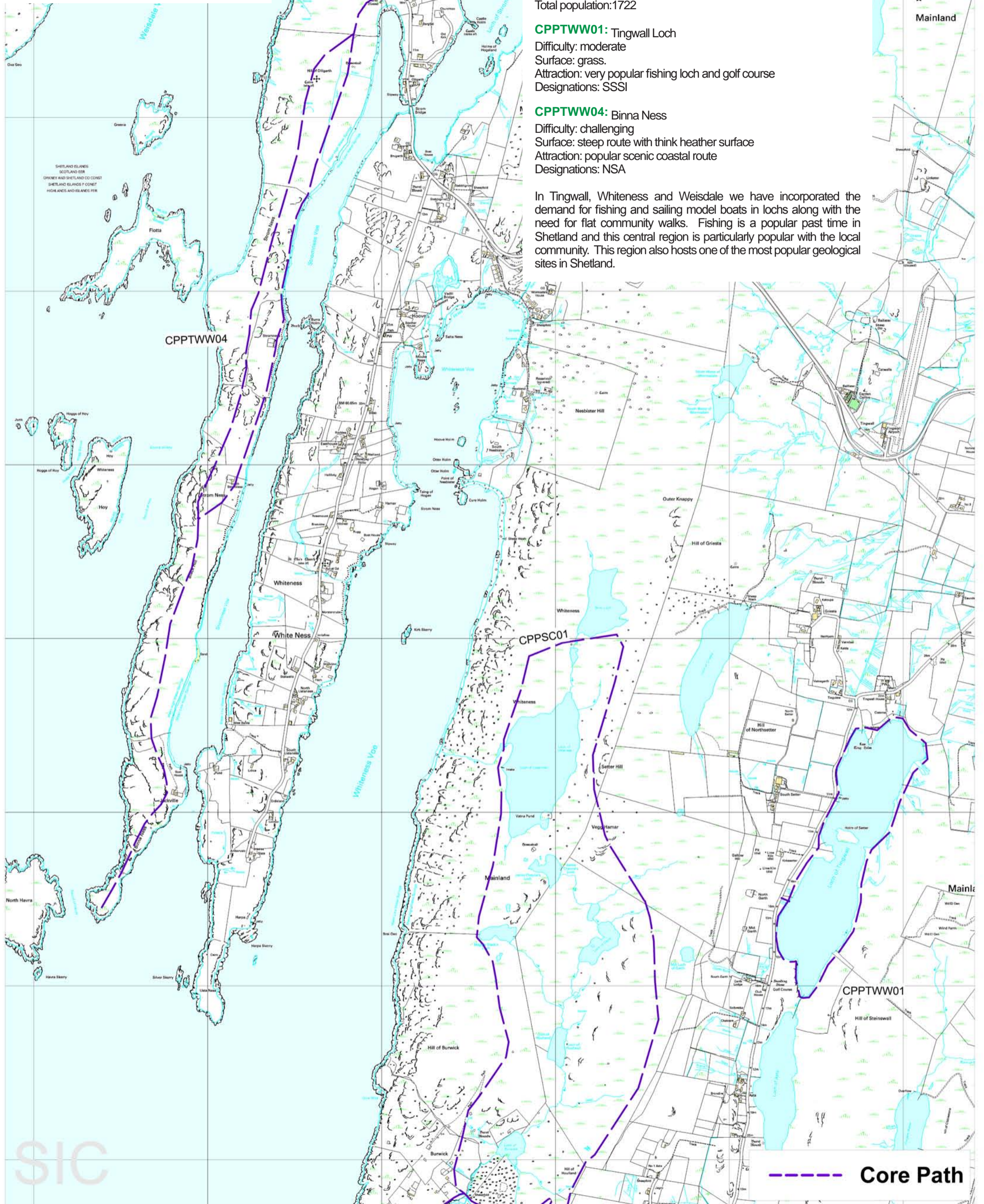
## Area Proposal - Tingwall, Whiteness and Weisdale CPPTWW 1&4

Key facts  
 Number of routes: 6  
 Total distance: 23km  
 Total population: 1722

**CPPTWW01:** Tingwall Loch  
 Difficulty: moderate  
 Surface: grass.  
 Attraction: very popular fishing loch and golf course  
 Designations: SSSI

**CPPTWW04:** Binna Ness  
 Difficulty: challenging  
 Surface: steep route with thick heather surface  
 Attraction: popular scenic coastal route  
 Designations: NSA

In Tingwall, Whiteness and Weisdale we have incorporated the demand for fishing and sailing model boats in lochs along with the need for flat community walks. Fishing is a popular past time in Shetland and this central region is particularly popular with the local community. This region also hosts one of the most popular geological sites in Shetland.



**Core Path**

Shetland Islands Council Licence Number 100024344. 2008. This map is reproduced from Ordnance Survey material with the permission of Ordnance Survey on behalf of the Controller of Her Majesty's Stationery Office © Crown Copyright. Unauthorised reproduction infringes Crown copyright and may lead to prosecution or civil proceedings.

Date June 2008  
 Scale 1:20000