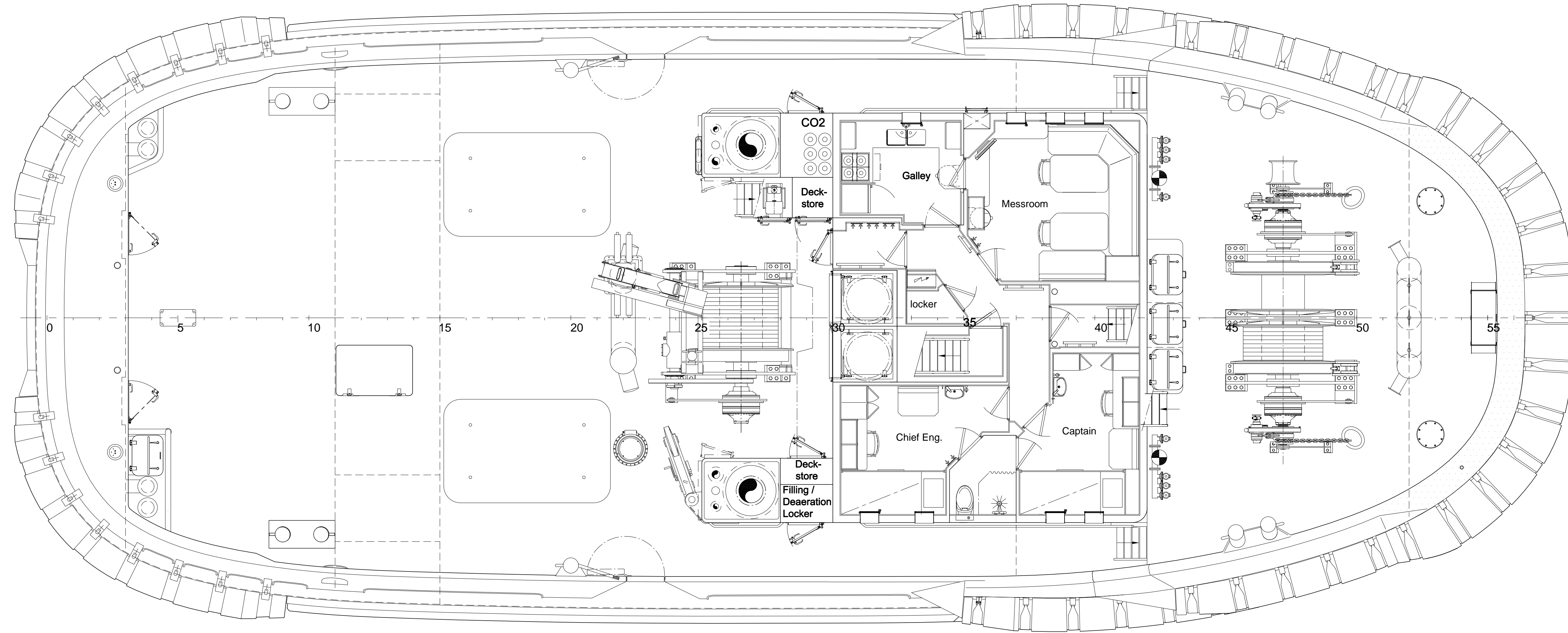
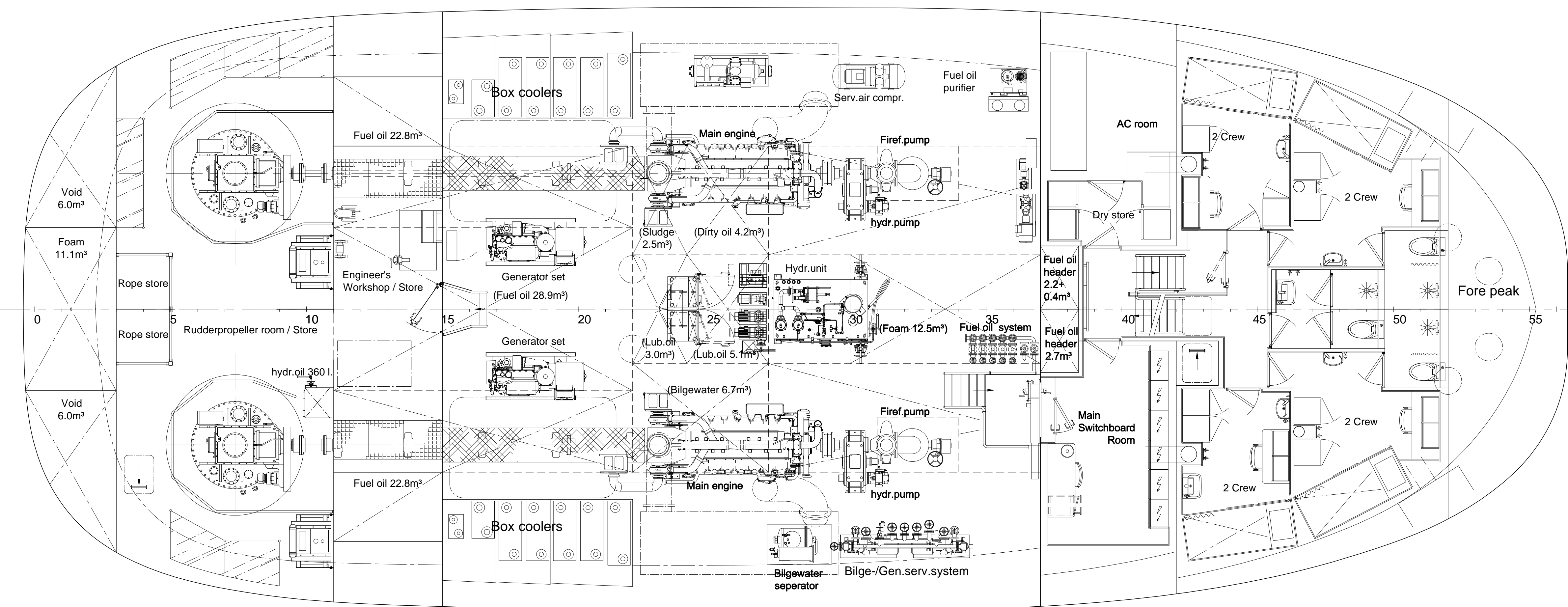


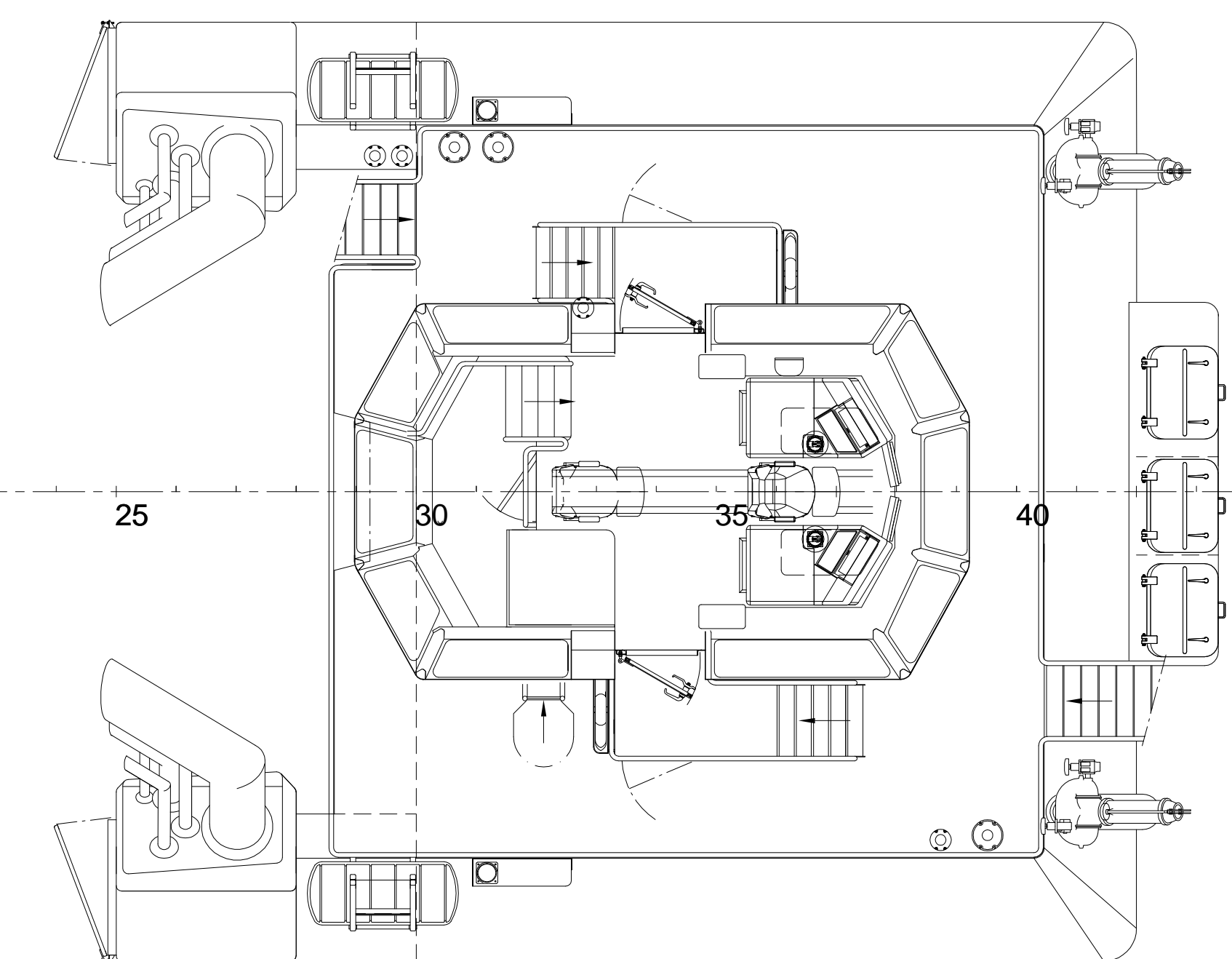
Main deck



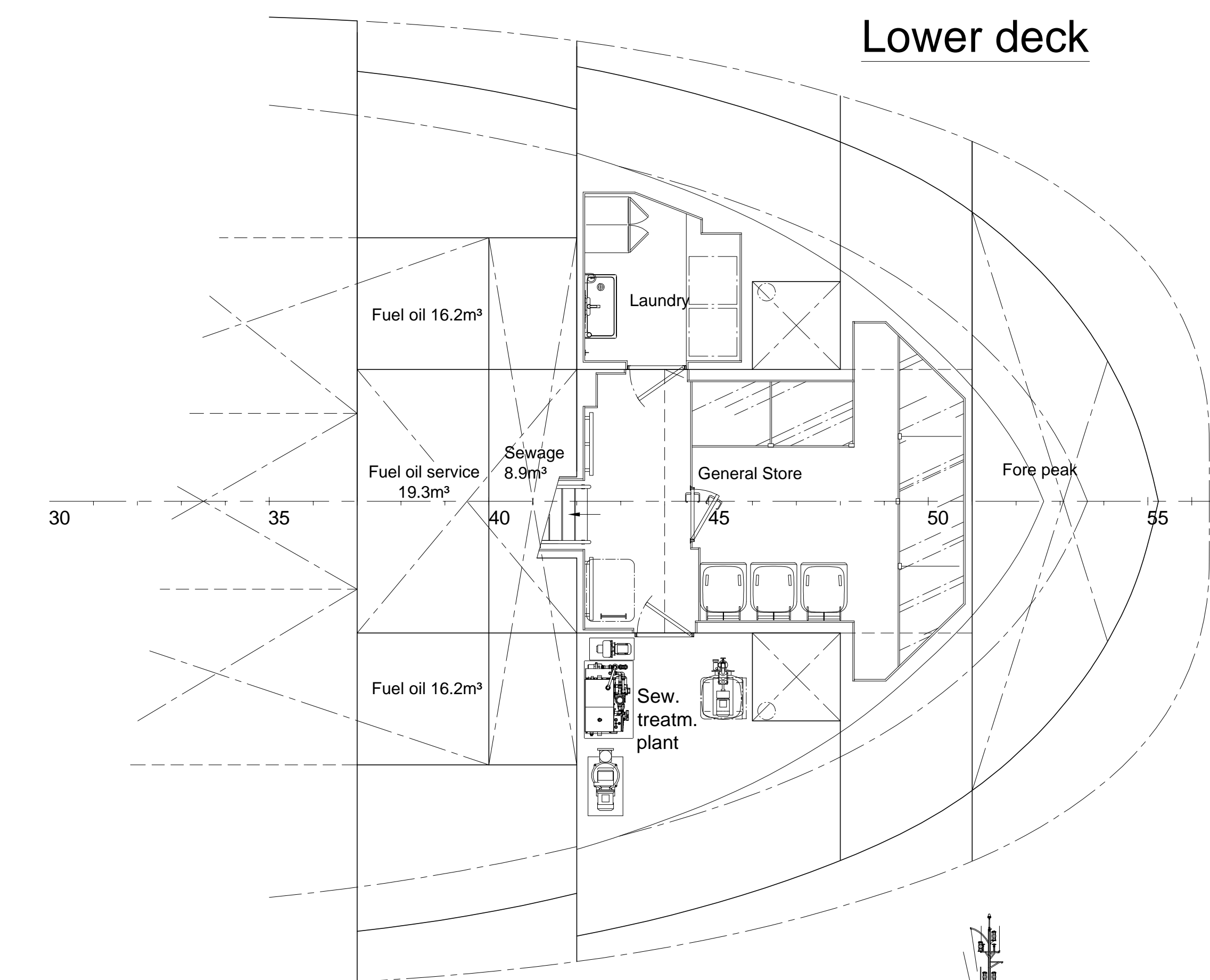
Below Main deck



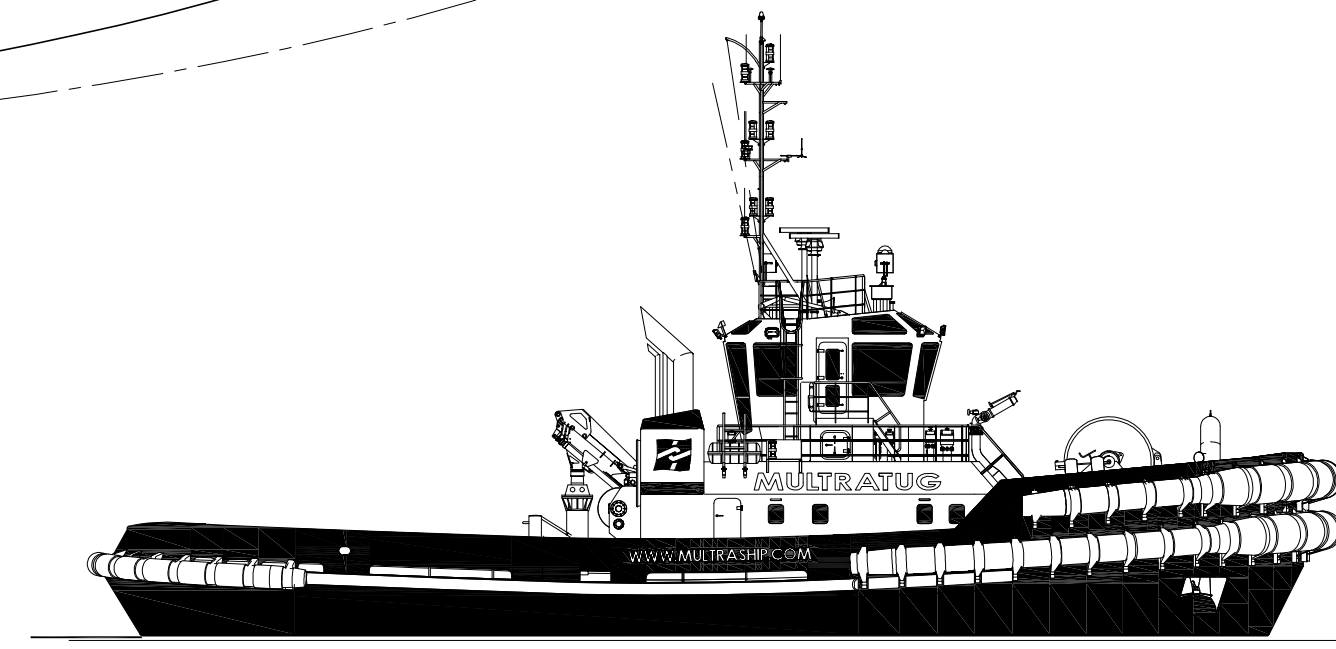
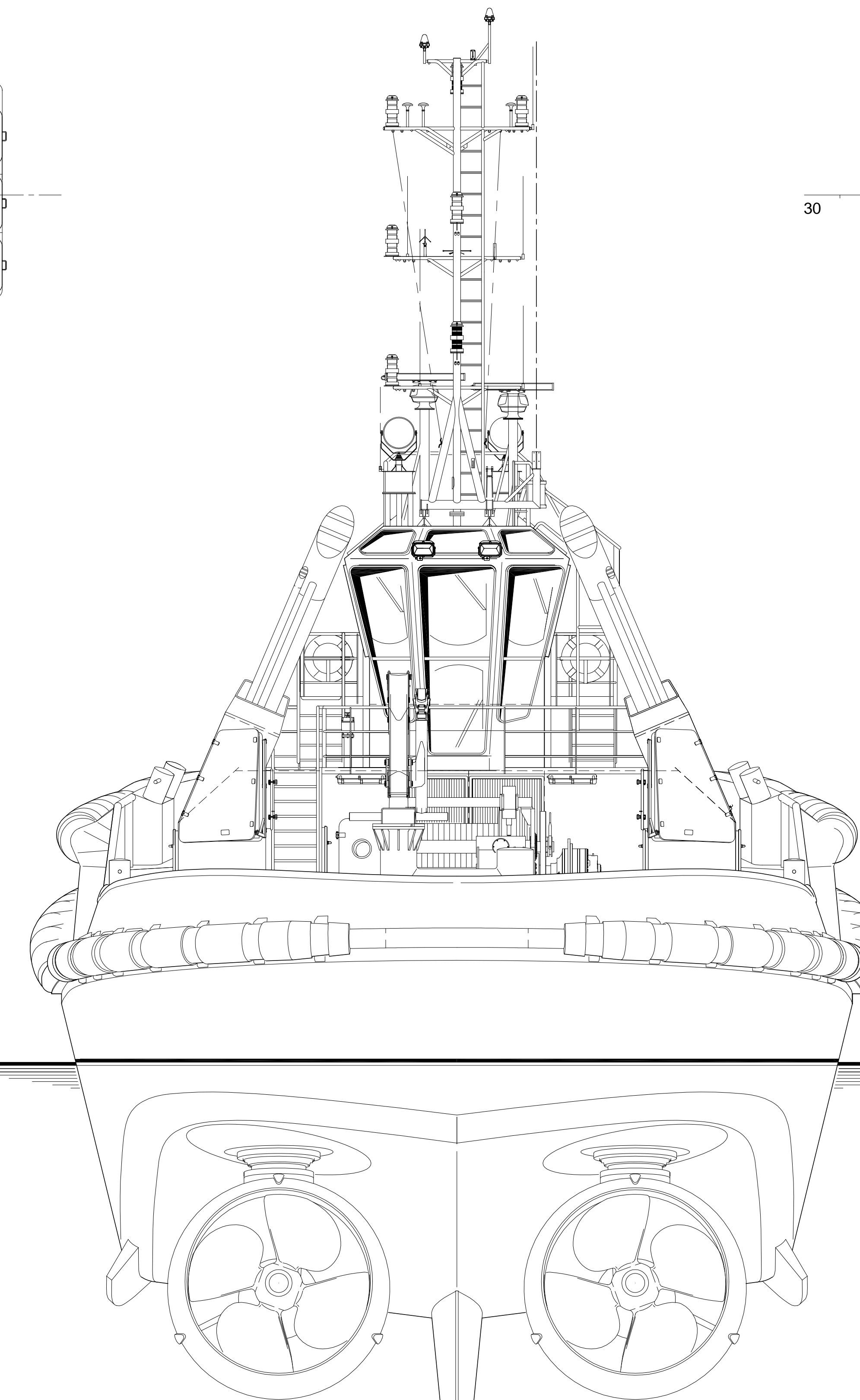
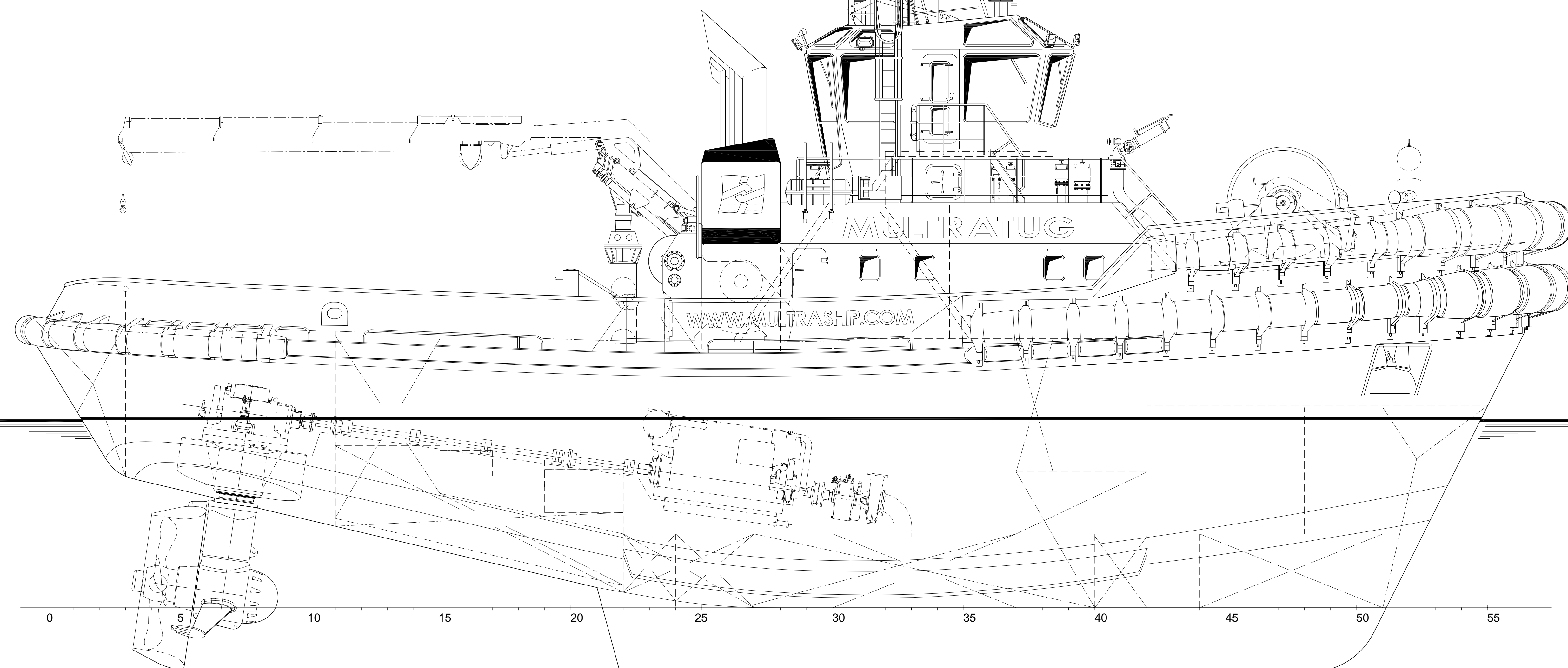
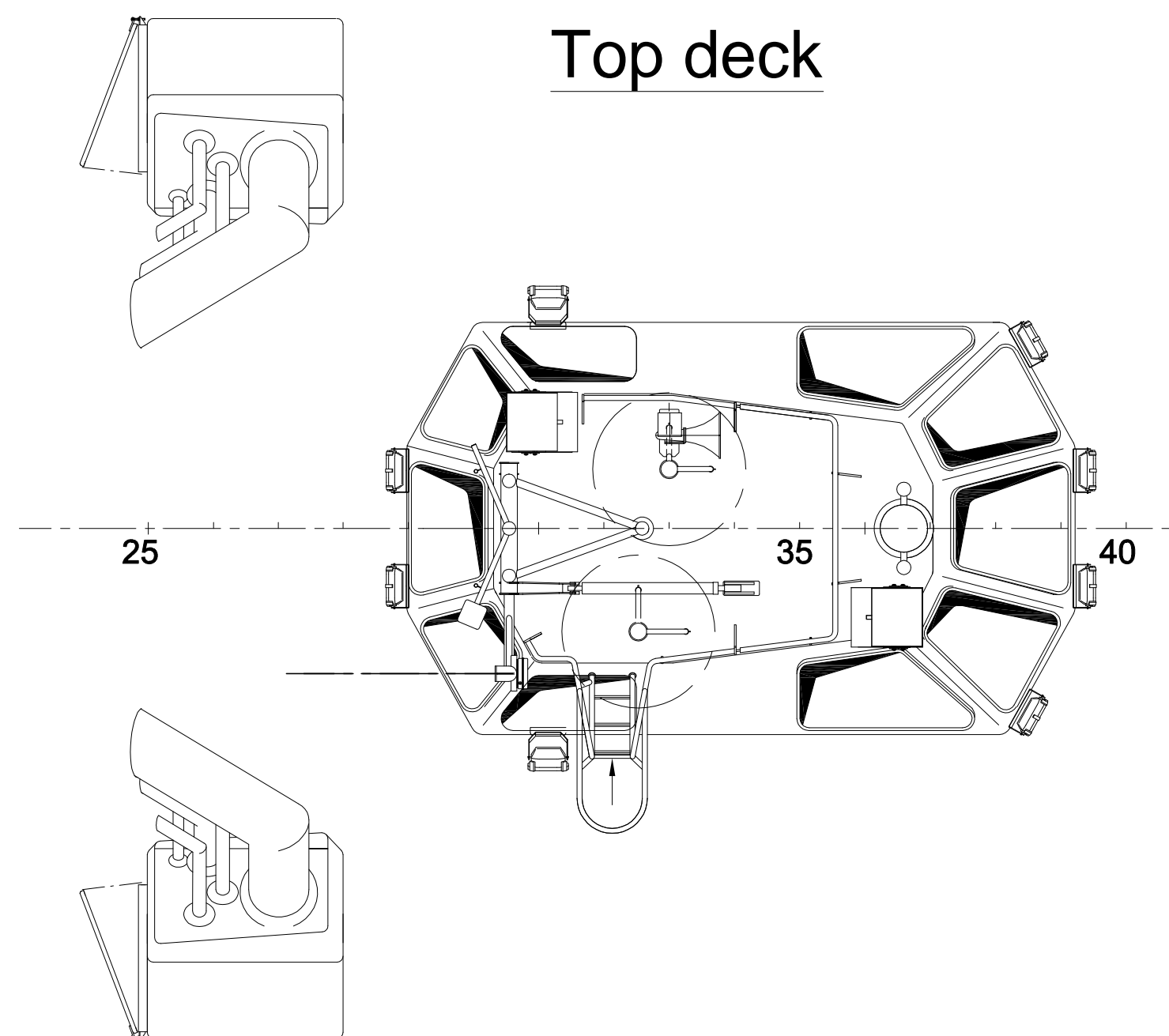
Bridge deck



Lower deck

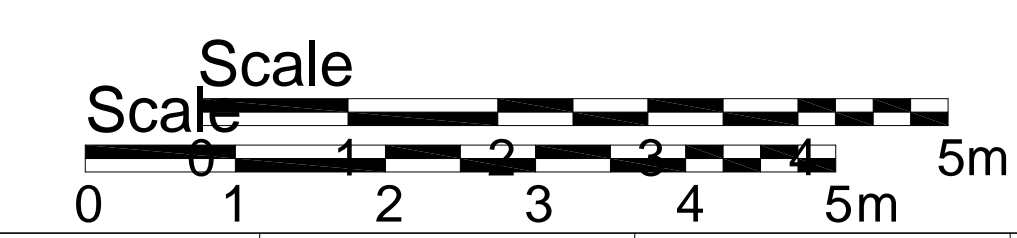


Top deck



Principal dimensions:
 Length o.a. 32.70 m
 Beam o.a. 12.82 m
 Depth at sides 5.35 m
 Draught aft (approx.) 5.50 m

at sides → Fuel oil 2 x 22.8m³ P.S. → Sludge 2.4m³ Dirty oil 4.2m³ Fuel oil 20.3+18.1m³ Freshwater 2 x 7.7m³
 at centre → Fuel oil 28.9m³ S.B. → Bilgewater 6.7m³ Lub. oil 3.0m³ Lub. oil 5.1m³ Foam 12.5m³ Sewage 5.1m³ Fuel oil 19.3m³



REV/DATE	DRWN	CHKD	APPROV	REVISION SUBJECT
DAMEN DAMEN SHIPYARDS GORINCHEM				
<small>COPYRIGHT DAMEN SHIPYARDS GROUP Industrieterrein Auldijk West 33 P.O. Box 4002 4400 AA Gorinchem The Netherlands Phone +31 (0)182 63 11 11 info@damen.nl Fax +31 (0)182 63 21 89 www.damen.nl</small>				
DRAWN	HEZ	CHECKED	PLV	APPROVED
TYPE ASD Tug 3212		YARD NO 512528		DERIVED FROM DWG 512528-000-001
FORMAT A5-1		SCALE 1:50		PROJECTION
General Arrangement ASD Tug 3212				
COMP NO	SECT NO	YARD NO	DWG NO	SHEET
		512528	512528-000-001	-