

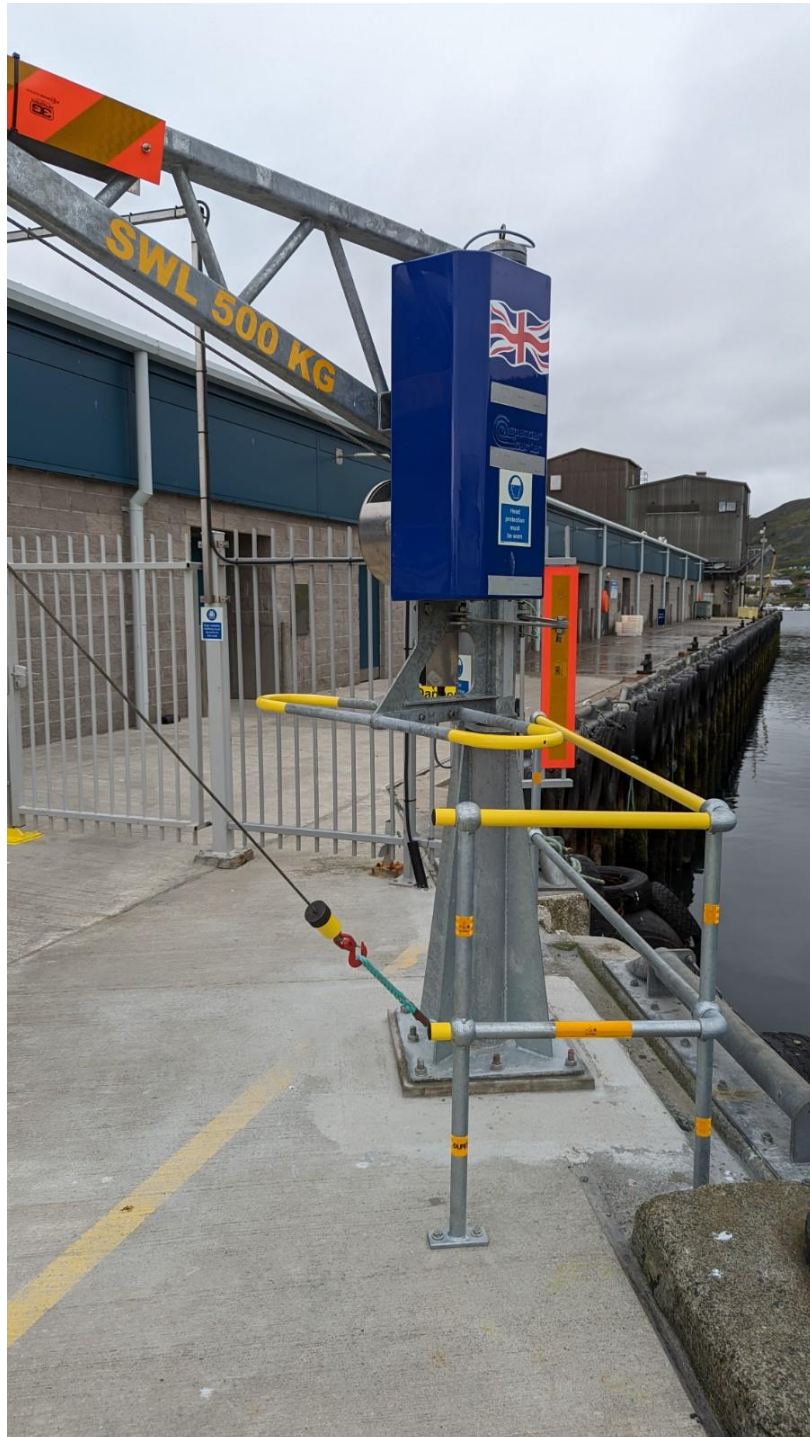


Shetland Islands Council

Scalloway Fish-market Davit Crane User Guide

Scalloway Fish-market Davit Crane User Guide

Instructions for safe use of Spencer Carter 500kg Davit Crane as fitted at Scalloway Fishmarket . This crane is available for use by Approved Persons Only.



Scalloway Fish-market Davit Crane User Guide

Pre-use checks

- Carry out pre-use visual inspection as per LOLER requirements.
- Check Davit Crane for any visible defects.
- Check hook is in good order with split pin and functional latch in place.
- Check condition of exposed lifting wire.
- Ensure no trip hazards near operating zone and waters edge.
- Proper PPE is being worn (Hard Hats, Hi-Viz, Lifejacket and protective footwear).
- Working area is clear of other users and members of the public.
- Unclip the slew locking mechanism.

(If any issues are noted with any items of equipment please report immediately to Scalloway Harbour Office or via the I-pad in the market corridor)



Scalloway Fish-market Davit Crane User Guide

Activate Crane

Open the control box's protective cover and ensure the "emergency stop" button is reset correctly in the "out" position.

Approved User should then present their FOB to the fob reader to activate power to the crane.



Green flashing light will show when crane is operational

Fob Reader to activate crane

Press the "Start" button within 3 seconds of activation and the green flashing light should operate, the crane is now ready for use.



Start Button

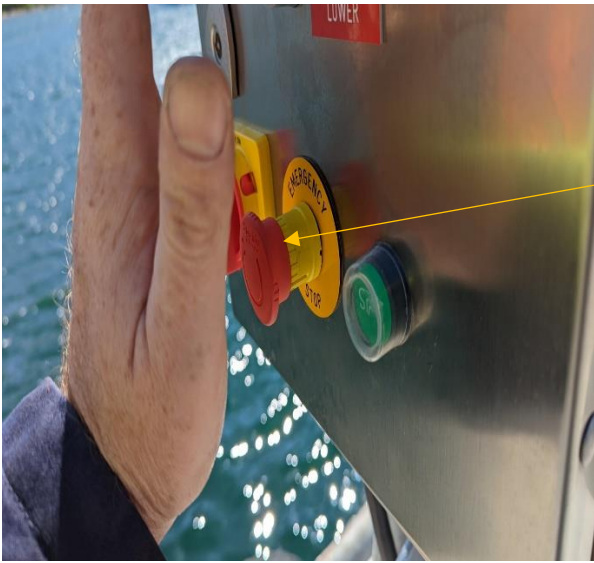
Winch up

Winch down

Emergency Stop and deactivate

Power Isolator

Scalloway Fish-market Davit Crane User Guide



EMERGENCY STOP. Press the button to STOP. This will disable the RAISE and LOWER buttons and deactivate the electrical supply. Use in an emergency situation or on completion of lifting operations only.

If used the fob will need to be presented to the reader again, ensure the red button is returned to its operational "out" position.



Locking mechanism in place to prevent crane swinging. Crane **MUST** be left in the "locked" position when not in use.

Failure to properly stow the crane or deactivate on completion of use may result in the users privileges being removed.

Scalloway Fish-market Davit Crane User Guide



Handle for swinging crane

Additional Information:

- If UP button is pressed and cable is wound to the top of the derrick, a safety mechanism is operated to prevent "over winding". In this case releasing the UP button and pressing the DOWN button will lower the cable and allow normal operations to continue.
- This unit is equipped with a smart overload sensing circuit. In the event of an overload (approximately 10% of the rated load) a STOP signal is generated, and the load cannot be hoisted further. The load must be lowered to the ground and the load reduced to or below the rated load before continuing.
- In the event of a power interruption OR the unit is switched OFF with a load hanging, the calibration of the unit will be altered. In this situation the following recalibration must be followed:
 - . Restore power to the unit.
 - . Present fob to the reader to activate
 - . Press Green Start button.
 - . Press DOWN button to lower the load.
 - . Remove the load from the hook.
 - . Switch off power at the Control Unit main isolator for 10 seconds.
 - . Switch Control Unit main isolator ON.
 - . Present fob to the reader to activate
 - . Press Green Start Button.
 - . Press UP Button - to check operation.
 - . Press Down Button- to check operation.
 - . Continue normal operations