

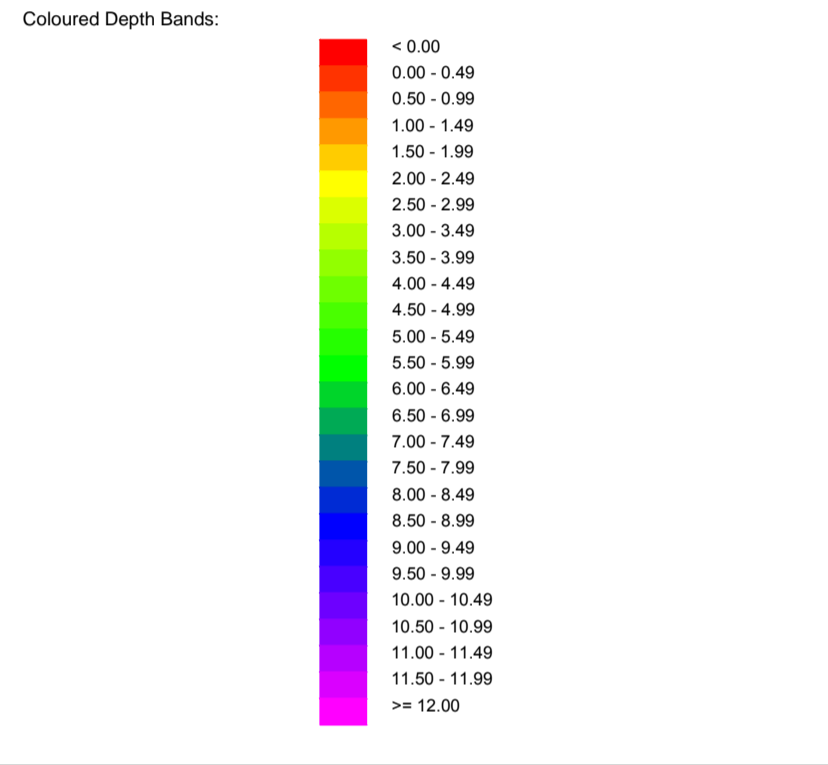
Legend

- 12<sub>s</sub> Depths relative to CHART DATUM.
- Sea-bed contour relative to CHART DATUM.
- Mean High Water Springs
- Mean Low Water Springs

Survey Parameters & Equipment

Survey Vessel:	Coastal Sensor II (MCA Cat III)
Positioning System:	Trimble Applanix POS MV
GPS Correction Source:	Corrections from Base Station
Echosounder:	R2Sonic 2022 Multibeam System 400kHz
Motion Compensator:	Trimble Applanix POS MV
Positioning System Spheroid & Datum:	ETRS89
Grid System:	National Grid of Great Britain
Geoid Model:	OSGM15
Transformation Parameters:	OSTN15
Spheroid:	Airy
Semi Major Axis:	6377563.396
Flattening (1/f):	299.324964600
Vertical Datum (Topographic):	Chart Datum
Vertical Datum (Hydrographic):	Chart Datum
Distance Unit:	Metre

Chart Datum is 0.92m below Ordnance Datum (Fair Isle).  
 The datum was established using corrected OS Rinx data and post-processed using Trimble Business Centre Software.



Notes:  
 Horizontal and vertical datums were referenced to control stations on site.

Heights in metres above Chart Datum (Fair Isle)

MHWS	MHWN	MLWN	MLWS
2.0	1.7	1.0	0.6

CONTROL STATION COORDINATES (CD)			
STN	EASTING	NORTHING	LEVEL
FI 1	422542.169	1072574.914	2.910
FI 2	422528.124	1072529.147	2.973

**Aspect**  
 Land + Hydrographic Surveys  
 CHARTERED SURVEYORS  
 Thornhouse Business Centre  
 Ballot Road  
 Irvine Fax : 01294 313389  
 KA12 OHW  
 E-mail: mail@aspect-surveys.com  
 Web: www.aspect-surveys.com

Client:

**NIRAS**  
 MERLIN HOUSE  
 HILLINGTON  
 GLASGOW  
 G52 4XZ

Project Title:  
 MULTIBEAM BATHYMETRIC SURVEY - POST DREDGE  
 NORTH HARBOUR  
 FAIR ISLE  
 SHETLAND

Project No:	A7453	Scale:	1:500
Surveyed date:	19th August 2020	Issued date:	2nd September 2020
Surveyed by:	KAK	Checked by:	EJS
Sheet No.:	1 of 1	Plot Scale:	1:1 @ A1

