

Notice to Mariners

Vessels & General Safety Advice

Scottish Hydro Electric Power Distribution (SHEPD)

Date of Issue: 28/03/2024

PROJECT OVERVIEW

On the instruction of Scottish Hydro Electric Power Distribution [herein SHEPD], a survey campaign is required to provide detailed information on the seabed characteristics and current velocity of an area across the Sound of Papa from mainland Shetland to Papa Stour, to enable a route engineering feasibility study to be undertaken as part of a planned submarine cable installation project.

MCA Category II vessel - Proteus will be utilised on the project for the offshore element of the project, detailed overleaf. MCA Category III vessel – Marine Sensor or Coastal Sensor II will be utilised for the nearshore element of the project, detailed overleaf.

The survey area is a 1,200m corridor across the Sound of Papa, defined by the coordinates listed in Table 1.

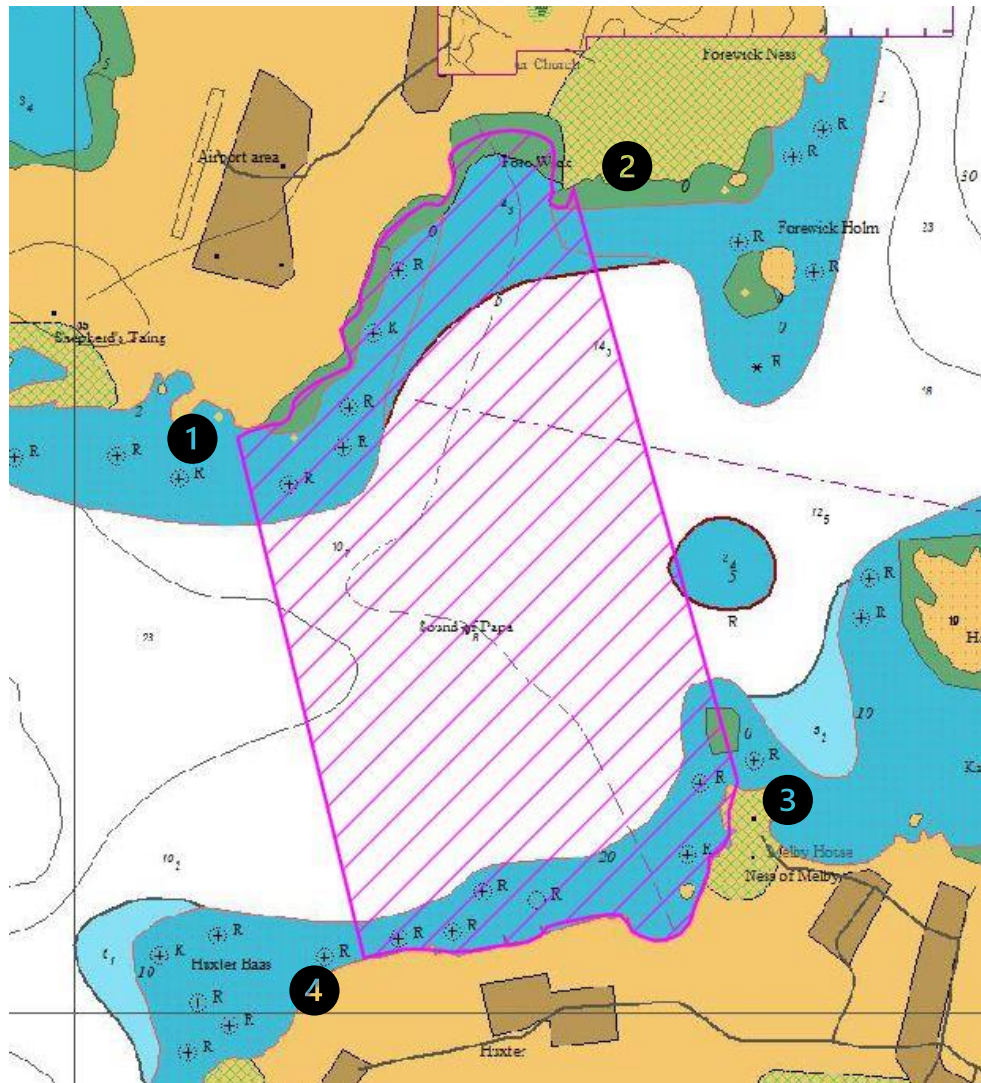
Point Number	Latitude [WGS 84]	Longitude [WGS 84]
1	60° 18.883'N	01° 41.483'W
2	60° 19.267'N	01° 40.433'W
3	60° 18.350'N	01° 39.933'W
4	60° 18.083'N	01° 41.100'W

TABLE 1 - CABLE CORRIDOR COORDINATES

Survey operations at this location are expected to commence on 31st March 2024, initial works completed over the period of 3 weeks.

LOCATION DETAILS

The survey corridor is noted below for information. Equipment calibration operations may take place out with the defined corridor and these areas will be chosen so as not to interfere with fishing / marine traffic activity.

PAPA STOUR, SHETLAND ISLES


Proposed Dates	Vessel Scope	Vessels
31.03.2024 - 30.04.2024	Geophysical Survey	Proteus & Marine Sensor / Coastal Sensor II

FIGURE 1 – PAPA STOUR OVERWATER SURVEY EXTENTS
VESSEL DETAILS

All vessels to be used during the survey campaign are owned and operated by Aspect Land & Hydrographic Surveys Ltd. Operations will be limited to daylight hours only.


The vessels conducting these surveys will be restricted in their ability to manoeuvre and will display the appropriate lights and shapes. Other vessels are requested to pass at a safe speed and provide a minimum clearance of 500m (COLREGs Rule 16 & 18) during marine operations.

All vessels will monitor VHF Channel 16 throughout survey operations. Mobile contacts for the vessels are listed at the end of this NtM.

Please be advised that this Notice to Mariners should be treated as official notice of the nature, duration and location of the works which are scheduled to take place. During the period of this notice, we request that you plan your activities around our short-term, temporary activities.

Any failure to remove equipment (including fishing equipment, where this has been requested) or entry into the identified location in a manner that would constitute a hazard would be a breach of your duties of safe seamanship as described in the Convention on International Regulations for Preventing Collisions at Sea 1972 and/or the Merchant Shipping Act 1995, and may result in removal of the relevant equipment. Failure to remove equipment or entry into the identified location in a manner that would constitute a hazard may constitute a breach of duty of care at common law, and a failure to protect submarine cables for successful seabed user co-existence under Scotland's National Marine Plan.

SSEN shall found on this notice in the event of any damage, loss or disruption arising from failure to heed the information herein.

Vessel Photo	Vessel Description
	<p>Proteus LOA: 14.0m Beam: 4.96m Draft: 1.30m Call Sign: MAMM2 MMSI No: 232005897 VHF: 16</p>

Vessel Photo	Vessel Description
	<p>Marine Sensor LOA: 6.9m Beam: 2.5m Draft: 0.3m Call Sign: MLLR2 MMSI No: 235033255 VHF: 16</p>

Vessel Photo	Vessel Description
	Coastal Sensor II LOA: 6.5m Beam: 2m Draft: 0.3m Call Sign: MAMM2 MMSI No: 232005897 VHF: 16

CONTACT DETAILS

Vessel management contact details are given in the table below.

Name & Designation	Organisation	Contact Number	Email
Andrew McCormick Fleet Manager	Aspect Land & Hydrographic Surveys	01294 313 399 07796 171 320	amccormick@aspectsurveys.com
Scott Norman HSEQ Manager	Aspect Land & Hydrographic Surveys	01294 313 399 07516 801 268	snorman@aspectsurveys.com
General Office	Aspect Land & Hydrographic Surveys	01294 313 399	mail@aspectsurveys.com

FISHING LIAISON OFFICERS (FLOs)

Fishing liaison for the work is being coordinated by Brown and May Marine (BMM). For any commercial fishery queries please contact the Company Fishing Liaison Officer (CFLO) Alex Winrow-Giffin on 07760 160039 / 01379 872144, alex@brownmay.com.

The Shetland Fishermen's Association (01595 693197) will be a key fisheries contact for any activity in the area.

DISTRIBUTION LIST

The Distribution List of the Notice to Mariners is as per the stakeholder list in the SHEPD Fisheries Liaison and Management Action Plan (FLMAP).