

# SHETLAND ISLANDS COUNCIL Notice to Mariners



## Notice to Mariners No 05/24 – Reduced Depth – Scalloway Harbour

Mariners are advised that a survey now indicates some localised depths at chart datum of 8.4 m in the main channel. See below chart extract for details.

Investigations will be carried out and a further notice will be issued when this has been completed.

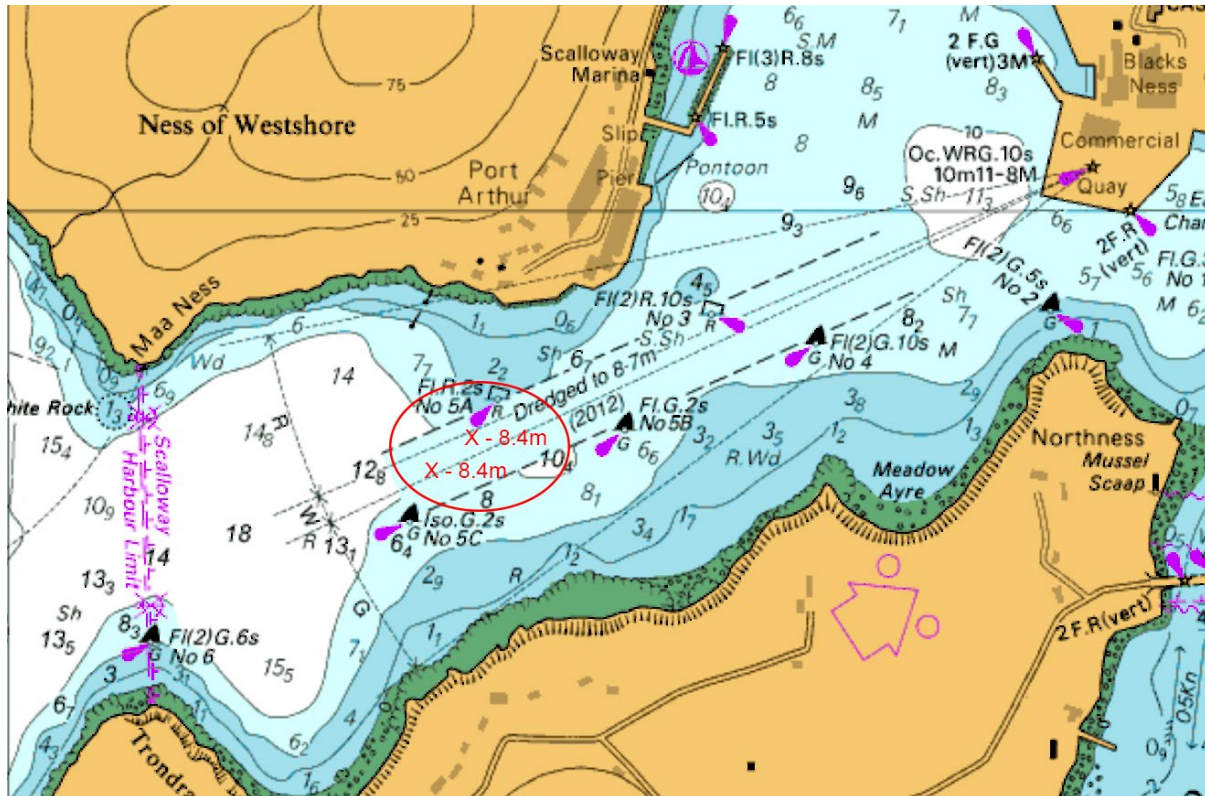


Chart Extract not to scale - not to be used for navigation.

A full list of current Local Notices to Mariners can be found at;

[www.shetland.gov.uk/ports](http://www.shetland.gov.uk/ports)

[Local Notices to Mariners – Shetland Islands Council](#)

Ports and Harbours Operations

Shetland Islands Council