

Shetland in Statistics 2023



SHETLAND
ISLANDS COUNCIL

Shetland in Statistics

2023

No. 43



SHETLAND
ISLANDS COUNCIL

Published by

Shetland Islands Council
Economic Development Service
Development Services Department
Solarhus, 3 North Ness Business Park
Lerwick, Shetland, ZE1 0LZ

© 2024 Economic Development Service, Shetland Islands Council

Cover photo: The Shetland flag flying over Lerwick Town Hall. Credit: SIC

Contents		Page
Introduction		5
1	People	
	Population	6-7
	Births & Deaths	7-8
	Migration	8
2	Economy	
	Employment & Economic Activity	9-12
	Fish Catching	13-16
	Marine Protection	16
	Shellfish Aquaculture	17
	Finfish Aquaculture	18
	Fish & Shellfish Processing	19
	Agriculture	19-20
	Visitors/Tourism	21-22
	Oil & Gas	23-25
	Third Sector	26-27
3	Physical	
	Location Map	28
	Physical Characteristics Map	29
4	Weather/Climate	30-32
5	Transport	
	Internal Transport Services	33
	External Transport Services	34
	Vehicle Ownership/Schedule of Roads	34
	Lerwick Harbour	35
	Scalloway Harbour	36
6	Housing	
	Total Domestic Properties	37
	House Sales	37
	Building Completions/Planning Applications	37-38
7	Education	
	School Rolls & Staffing	39-41
	Further Education/Modern Apprenticeships	42
8	Health and Social Care	
	Staffing	43
	Hospital Activity	44
	Social Care	44
9	Recreation	
	Leisure Activities	45
	Leisure Centre & Swimming Pool Admissions	45
	Community Halls & Centres	45
10	Services	
	Fire Service	46
	Police Service	47
	Water and Wastewater Services	48
	Digital Connectivity	48

11 Energy	Electricity Generation & Distribution	49
	Energy Consumption	49-50
	Energy Sources	50-51
	Plug-in Vehicles	51
	SIC Climate Change Programme	51
12 Conservation	Built Heritage	52
	Nature Conservation	52-53
	Wildlife	53
13 Politics & Local Government	General & Scottish Elections	54
	Council Members/Wards	54
	SIC Structure/Departments	54
	Community Councils	55
	SIC Finance	55
14 The Shetland Partnership		56

Welcome to the 43rd edition of Shetland in Statistics

First published in 1972, as a guide to record facts and figures about Shetland, the publication has grown and changed over the years, reflecting changes in the islands.

Shetland in Statistics now provides a body of work with statistics on Shetland's economy, climate, population and much more over many decades.

Whilst every care is taken in the production of this publication, Shetland Islands Council cannot accept responsibility for any errors or omissions therein.

Anyone wishing to use these statistics for anything but general interest should refer to the original source data, quoted throughout this booklet.

We hope you find the publication useful. If you have any comments or amendments please contact Shetland Islands Council Economic Development Department.

1 People

Population

After decades of decline the population of Shetland, which had fallen to nearly 17,000 in the mid 1960s, rose by 31% between 1971 and 1981 as a direct result of oil related activity. Since the 1980s, the population has been fairly stable around 22,000 - 23,000.

Annual Mid-Year Population Estimates									
	2013	2014	2015	2016	2017	2018	2019	2020	2021
Shetland	23,200	23,220	23,200	23,200	23,080	22,990	22,920	22,870	22,940

Source: National Records of Scotland: [Shetland Islands Council Area Profile \(nrscotland.gov.uk\)](http://nrscotland.gov.uk)

Population of Shetland By Area (based on Census)							
Area	1931	1961	1971	1981	1991	2001	2011
Brae*	n/a	n/a	n/a	n/a	756	660	856
Bressay	452	269	251	334	352	384	368
Burra	767	648	565	850 ^e	929	850	852
Cunningsburgh**	n/a	411	410	n/a	n/a	658	694
Delting	958	598	580	2,110	1,105	970	931
Dunrossness	1,089	857	848	1,591	1,502	1,471	1,484
Fair Isle	108	64	65	69 ^e	67	69	68
Fetlar	217	127	88	101	90	86 ^e	61
Foula	118	54	33	45 ^e	42	32	38
Gulberwick/Quarff	1,518	385	171	579 ^e	398	662	827
Lerwick	4,221	5,913	6,127	6,899	7,336	6,833	6,928
Muckle Roe	n/a	103	94	101	115	104	130
Nesting	822	434	380	506	512	570	624
Northmavine	1,343	816	696	898	878	841	741
Papa Stour	100	55	24	35 ^e	35 ^e	24	15
Sandsting	1,552	957	873	1,002	891	945	831
Sandwick	1,507	761	710	1,303 ^e	1,352	774	970
Scalloway***	n/a	n/a	n/a	1,160	802	1,129	1,479
Skerries	110	108	101	88 ^e	87	76	74
Tingwall	1,440	1,603	1,671	1,080	1,431	1,405	1,477
Trondra	91	20	17	88	117	133	135
Unst	1,341	1,151	1,127	1,140	1,055	720	632
Vaila	-	-	-	-	-	-	2
Walls & Sandness	884	561	483	573	554	601	923
Whalsay	900	764	870	1,025	1,041	1,034	1,061
Yell	1,883	1,155	1,143	1,191	1,075	957	966
Total	21,421	17,814	17,327	22,768	22,522	21,988	23,167

^e Estimated

* From 1931 to 1981 the figures for Brae are included in the figures for Delting

** In 1931, 1981 and 1991 the figures for Cunningsburgh are included in the figures for Sandwick

*** From 1931 to 1971 the figures for Scalloway are included in the figures for Tingwall

Populations were enumerated on a slightly different basis at the 1981 and 1991 censuses, and are therefore not strictly comparable

1981 Census – Resident population **excluding** absent households

1991 – 2011 Census – Resident population **including** absent households

Shetland Population Breakdown By Age & Sex															
Age Group	1991			2001			2011			2021			2022*		
	M	F	Total	M	F	Total	M	F	Total	M	F	Total	M	F	Total
0-4	830	797	1,627	669	659	1,328	741	648	1,389	551	516	1,067	500	500	1,000
5-9	815	743	1,558	813	721	1,534	712	614	1,326	667	650	1,317	700	700	1,400
10-14	903	837	1,740	820	822	1,642	711	739	1,450	761	654	1,415	700	700	1,400
15-19	831	790	1,621	700	605	1,305	792	659	1,451	669	593	1,262	700	600	1,200
20-24	838	757	1,595	645	546	1,191	671	624	1,295	591	535	1,126	500	500	1,000
25-29	883	785	1,668	695	656	1,351	653	600	1,253	675	584	1,259	600	600	1,200
30-34	857	792	1,649	792	778	1,570	707	696	1,403	690	701	1,391	700	700	1,400
35-39	917	795	1,712	883	843	1,726	782	751	1,533	669	637	1,306	700	700	1,300
40-44	933	787	1,720	802	772	1,574	836	834	1,670	695	713	1,408	700	700	1,400
45-49	767	713	1,480	862	767	1,629	952	889	1,841	817	715	1,532	700	800	1,500
50-54	614	556	1,170	888	737	1,625	833	796	1,629	806	854	1,660	800	900	1,700
55-59	500	491	991	715	660	1,375	824	769	1,593	890	853	1,743	900	800	1,700
60-64	439	454	893	537	516	1,053	842	715	1,557	782	748	1,530	800	800	1,600
65-69	415	474	889	420	448	868	601	629	1,230	708	701	1,409	700	700	1,400
70-74	295	439	734	335	406	741	450	463	913	695	636	1,331	700	700	1,300
75-79	261	396	657	260	407	667	304	383	687	458	527	985	500	500	1,000
80-84	165	314	479	139	277	416	204	287	491	290	352	642	300	400	700
85-89	72	182	254	78	188	266	102	194	296	153	212	365	200	200	400
90+	24	61	85	18	109	127	44	116	160	63	129	192	100	100	200
Total	11,359	11,163	22,522	11,071	10,917	21,988	11,761	11,406	23,167	11,630	11,310	22,940	11,500	11,400	22,900

*2022 census figures individually rounded to the nearest 100. Figures do not add exactly due to this rounding
Sources: 1991, 2001, 2011 and 2022 figures from population census. 2021 figures mid-year estimates from National Records of Scotland: www.nrscotland.gov.uk/statistics-and-data/statistics/statistics-by-theme/population/population-estimates/mid-year-population-estimates/population-estimates-time-series-data

Births & Deaths

While there was a steady decline in the number of births in Shetland from 2012-2020, there has been an increase in the past two years. In relation to the Scottish standardised birth rate, Shetland's rate is consistently higher, and of the 32 Scottish Council areas, Shetland had the joint 2nd highest birth rate in 2022.

Number of Births and Birth Rates per 1,000 Population					
Year	Shetland Number of Births by Sex			Standardised Birth Rate	
	Male	Female	Total	Shetland	Scotland
2002	124	85	209	10.5	10.1
2011	131	111	242	11.7	11.1
2020	90	86	176	9.2	8.6
2021	106	94	200	10.5	8.7
2022	117	90	207	10.9	8.6

Source: National Records of Scotland: [Shetland Islands Council Area Profile \(nrscotland.gov.uk\)](http://Shetland Islands Council Area Profile (nrscotland.gov.uk))

In 2022 Life expectancy at birth in Shetland was higher for females (83.2 years) than for males (79.6 years), both of which were higher than the Scottish level. Of the 32 Scottish council areas, Shetland had the 2nd lowest standardised death rate. The leading causes of death were Cancer, Dementia & Alzheimer’s Disease, and Ischaemic Heart Diseases.

Number of Deaths and Death Rates per 1,000 Population					
Year	Shetland Number of Deaths by Sex			Standardised Death Rate	
	Male	Female	Total	Shetland	Scotland
2002	104	110	214	10.2	11.5
2011	103	128	231	10.2	10.1
2020	106	102	208	10.7	12.0
2021	148	109	257	11.2	11.6
2022	121	109	230	9.4	11.5

Source: National Records of Scotland: [Shetland Islands Council Area Profile \(nrscotland.gov.uk\)](https://nrs.scot.nhs.uk/shetland-islands-council-area-profile)

Migration

After nearly a decade of negative net migration, Shetland had a net migration rate of 5.4 in 2020/21.

Migration by Type and Net Migration Rates per 1,000 People*					
Year	Shetland Migration by Type			Net Migration Rate (per 1,000)	
	In	Out	Net	Shetland	Scotland
2002/03	690	810	-120	-5.4	1.11
2011/12	670	730	-70	-2.9	2.4
2019/20	560	590	-30	-1.4	3.1
2020/21	800	670	120	5.4	5.1

*Migration by type rounded to the nearest 10 at council level and nearest 100 at national level; Migration estimates include asylum seekers and refugees, but exclude movements of prisoners and armed forces personnel

Shetland Total Net Migration Breakdown by Age & Sex												
Age Group	2002/03			2011/12			2019/20			2020/21		
	M	F	Total	M	F	Total	M	F	Total	M	F	Total
0-4	12	-19	-7	-1	6	5	-3	-1	-4	8	10	18
5-9	-8	7	-1	-9	-9	-18	4	4	8	6	2	8
10-14	-6	-2	-8	-4	-1	-5	5	8	13	1	9	10
15-19	-29	-78	-107	-30	-31	-61	-16	-28	-44	-11	-24	-35
20-24	-4	0	-4	-16	9	-7	0	34	34	15	14	29
25-29	-11	0	-11	-12	-5	-17	-5	8	3	-1	10	9
30-34	10	9	19	-2	9	7	-12	-1	-13	2	8	10
35-39	-3	3	0	-1	-9	-10	-3	-4	-7	5	1	6
40-44	-6	0	-6	0	8	8	2	3	5	-1	19	18
45-49	-14	0	-14	0	-2	-2	1	4	5	13	0	13
50-54	6	-3	3	-4	7	3	-9	-3	-12	11	2	13
55-59	2	3	5	3	6	9	-7	11	4	4	1	5
60-64	2	0	2	6	-4	2	-1	-4	-5	6	16	22
65-69	3	-2	1	2	4	6	-2	-4	-6	4	-9	-5
70-74	0	-1	-1	7	5	12	-6	-5	-11	7	-6	1
75-79	0	1	1	3	-2	1	-5	0	-5	-2	3	1
80-84	4	3	7	-1	0	-1	2	2	4	-3	1	-2
85-89	1	1	2	1	-2	-1	2	1	3	0	0	0
90+	0	1	1	2	-1	1	-1	-2	-3	0	2	2
Total	-41	-77	-118	-56	-12	-68	-54	23	-31	64	59	123

Source: National Records of Scotland: [Shetland Islands Council Area Profile \(nrscotland.gov.uk\)](https://nrs.scot.nhs.uk/shetland-islands-council-area-profile)

2 Economy

Employment & Economic Activity

Employee Jobs in Shetland, excluding self-employed, government-supported trainees and HM Forces							
	2019	2020	2021	2022	Shetland %	Scotland %	GB %
Total Jobs	13,000	14,000	14,000	13,000	-	-	-
Full-time	8,000	9,000	9,000	8,000	61.5	67.3	68.8
Part-time*	5,000	5,000	5,000	5,000	38.5	32.7	31.2

*Part-time posts are 30 or fewer hours per week

Source: ONS [Labour Market Profile - Nomis - Official Census and Labour Market Statistics \(nomisweb.co.uk\)](https://nomisweb.co.uk)

Shetland Employee Jobs by Industry*	2019	2020	2021	2022	Shetland %	Scotland %	GB %
B: Mining & quarrying	75	100	75	75	0.6	1.0	0.2
C: Manufacturing	800	1,000	1,250	900	6.9	6.9	7.6
D: Electricity, gas, steam & air conditioning supply	100	200	150	125	1.0	0.8	0.4
E: Water supply, sewerage, waste management and remediation activities	100	100	100	100	0.8	0.7	0.7
F: Construction	1,250	1,250	1,250	1,250	9.6	5.7	4.9
G: Wholesale & retail trade, repair of motor vehicles/cycles	1,500	1,750	1,750	1,500	11.5	12.9	14.0
H: Transportation and storage	900	1,250	900	900	6.9	4.1	5.0
I: Accommodation and food service activities	900	700	800	800	6.2	8.4	8.0
J: Information and communication	200	200	175	200	1.5	3.2	4.6
K: Financial and insurance activities	45	40	35	35	0.3	3.3	3.3
L: Real estate activities	75	75	75	75	0.6	1.3	1.9
M: Professional, scientific and technical activities	450	450	450	500	3.8	7.4	9.1
N: Admin & support service activities	500	800	700	500	3.8	8.1	9.0
O: Public admin & defence; compulsory social security	900	900	1,000	900	6.9	6.5	4.7
P: Education	1,250	1,250	1,250	1,250	9.6	8.8	8.6
Q: Human Health and Social Work	2,250	2,250	2,500	2,000	15.4	15.7	13.5
R: Arts, entertainment and recreation	450	400	300	450	3.5	3.0	2.4
S: Other service activities	400	400	450	500	3.8	1.6	2.0

* Data excludes farm-based agriculture, self-employed, government-supported trainees and HM Forces

Source: ONS [Labour Market Profile - Nomis - Official Census and Labour Market Statistics \(nomisweb.co.uk\)](https://nomisweb.co.uk)

Unemployment* - ONS model-based estimates									
	1971	1981	1991	2001	2011	2020	2021	2022	2023
Shetland %	3.8	5.3	3.6	1.4	3.6	2.6	2.5	2.0	2.2
Eilean Siar %	18.0	20.1	14.5	4.9	7.6	3.3	3.0	2.5	2.3
Highland %	-	-	-	3.1	5.3	3.1	3.5	2.6	2.5
Orkney %	3.9	9.0	5.5	2.2	4.3	2.6	3.2	1.8	1.7
Scotland %	5.5	13.5	9.0	4.2	8.2	4.3	3.9	3.4	3.5
Great Britain %	-	-	-	2.5	8.0	4.7	4.4	3.6	3.7

* % figures are a proportion of economically active, aged 16-64

Source: ONS [Labour Market Profile - Nomis - Official Census and Labour Market Statistics \(nomisweb.co.uk\)](https://nomisweb.co.uk)

Economic Activity						
	2004	2011	2020	2021	2022	2023
Shetland (%) *						
Economically Active	86.3	82.0	74.6	73.7	76.1	84.3
In Employment	85.1	81.1	74.6	73.7	76.1	84.3
Employees	72.2	69.9	65.9	73.7	66.3	80.1
Self Employed	10.8	11.0	#	#	#	#
In Employment (%) *						
Eilean Siar	77.8	63.5	81.0	80.5	84.1	77.8
Highland	81.0	78.3	77.8	71.7	71.5	76.0
Orkney	83.4	79.3	83.3	72.9	87.5	88.3
Shetland	85.1	81.1	74.6	73.7	76.1	84.3
Scotland	72.6	70.5	73.4	73.2	74.4	74.7
Great Britain	72.6	69.9	75.3	74.9	75.6	78.8

Sample size too small for reliable estimate

* % figures are a proportion of economically active, aged 16-64

Source: ONS [Labour Market Profile - Nomis - Official Census and Labour Market Statistics \(nomisweb.co.uk\)](https://nomisweb.co.uk)

Number of New Business Start-ups*							
	2008	2011	2019	2020	2021	2022	2023
Aberdeen City	1,345	1,651	1,236	1,069	1,157	1,104	1,206
Aberdeenshire	1,327	1,493	1,443	1,064	1,193	1,229	1,225
City of Edinburgh	2,463	3,600	3,165	3,102	3,143	3,029	2,951
Glasgow City	2,535	4,066	3,883	4,487	4,213	4,195	4,450
Highland	915	1,200	1,395	1,196	1,462	1,452	1,329
Eilean Siar	89	143	141	122	147	139	134
Orkney	57	90	91	96	90	109	102
Shetland	63	128	109	84	134	128	131
Total Above	8,794	12,371	11,463	11,220	11,539	11,385	11,528
All Scottish Local Authorities	20,641	29,632	27,160	27,226	28,319	27,870	28,274
Business Start-up Rate - Number of business start-ups/(working age population/10,000)							
Shetland	37.8	85.6	77.7	60.4	96.4	92.2	94.3
Scotland	53.0	85.0	77.6	77.9	81.1	79.8	81.0

*Business numbers reflect openings of first current accounts from banks small business product ranges. This represents businesses new to banking or previously operated through a personal account. Figures exclude businesses operating through personal accounts, those which have switched business accounts to a new bank, those without banking relationships or those banking with other institutions.

Source: BankSearch

Business Registrations: VAT and/or PAYE Registered Private Sector Businesses - Shetland					
	2011	2020	2021	2022	2023
No. business registrations	1,365	1,580	1,625	1,655	1,665
Of which small businesses (0-49 employees)	94%	94%	95%	95%	95%

Share of Private Sector Jobs (%)					
Small business (0-49 employees)	2011	2020	2021	2022	2023
Shetland	61.8	63.3	62.6	63.2	64.5
Scotland	35.2	36.2	36.5	36.8	36.8
Island & remote rural areas	62.3	61.0	60.5	60.5	60.8
Mainly rural areas	50.3	49.6	50.0	50.6	50.1
Urban and substantial rural areas	34.6	36.1	36.7	37.0	37.1
Larger cities	24.6	26.5	26.5	26.6	26.8
Abroad-owned businesses					
Shetland	10.2	13.1	13.7	13.8	11.4
Scotland	15.7	18.3	18.9	18.9	19.4
Island & remote rural areas	6.6	10.1	10.6	10.8	10.2
Mainly rural areas	11.3	13.0	13.2	12.7	13.4
Urban and substantial rural areas	17.9	19.6	20.8	20.6	21.3
Larger cities	17.1	21.0	21.3	21.8	22.2
EU abroad-owned businesses					
Shetland	6.3	c	7.8	7.8	4.0
Scotland	5.8	6.6	6.7	6.8	6.9
Island & remote rural areas	2.0	3.1	3.3	3.8	2.9
Mainly rural areas	3.5	4.2	4.2	4.0	4.2
Urban and substantial rural areas	7.1	6.8	7.1	7.1	7.6
Larger cities	6.4	8.1	8.2	8.5	8.4

c = disclosive figure

Source: [Sub-Scotland Economic Statistics Database - gov.scot \(www.gov.scot\)](https://www.gov.scot)

Gross Weekly Pay - Fulltime Workers (£) (Median)						
	2002	2011	2020	2021	2022	2023
Eilean Siar	383.00	436.10	552.10	670.70	560.90	727.90
Highland	339.70	458.00	585.10	605.70	664.30	705.30
Orkney	#	427.40	579.50	563.00	660.50	776.20
Shetland	367.30	545.20	642.60	670.80	671.60	893.30
Scotland	369.30	487.20	595.00	619.90	641.30	702.40
Great Britain	392.70	500.20	587.40	612.20	644.70	682.60

Sample size too small for reliable estimate

Source: ONS [Labour Market Profile - Nomis - Official Census and Labour Market Statistics \(nomisweb.co.uk\)](https://www.nomisweb.co.uk)

2022 Household Average Annual Income by Area (£) (Median)													
Shetland Areas	Households	0-10k	10-20k	20-30k	30-40k	40-50k	50-60k	60-70k	70-80k	80-90k	90-100k	100k+	Median Income
Central Mainland	1,784	95	291	305	254	221	169	122	86	69	61	111	£37,845
Lerwick & Bressay	3,466	249	678	639	495	404	294	202	139	108	93	165	£33,219
North Isles	1,236	144	311	249	170	124	81	51	33	24	20	29	£26,262
North Mainland	1,405	109	287	265	202	163	117	79	53	41	34	55	£31,980
South Mainland	1,662	72	231	255	225	206	166	125	93	77	70	142	£42,191
West Mainland	835	56	161	159	126	102	73	49	33	25	20	31	£33,116
Central Mainland - Burra & Trondra, Scalloway, and Tingwall, Whiteness & Weisdale; North Isles - Unst, Yell, Fetlar, Whalsay, and Skerries; North Mainland - Northmavine, Nesting & Lunnasting, and Delting; South Mainland - Dunrossness, Sandwick, and Gulberwick, Cunningsburgh & Quarff; West Mainland - Sandness & Walls, and Sandsting & Aithsting													
Wider Areas	Shetland			Orkney			Highland			Scotland			United Kingdom
Total households	10,507			10,668			110,614			2,529,632			28,491,961
Mean Income	£41,833			£42,239			£44,067			£41,878			£44,844
Median Income	£34,251			£34,468			£36,143			£33,095			£36,440
Mode Income	£17,500			£17,500			£17,500			£17,500			£17,500
Lower Quartile	£19,635			£19,646			£20,487			£18,225			£20,193

Source: CACI Paycheck 2022

Gross Value Added (balanced) per head of population at current basic prices (£)							
	1998	2001	2011	2019	2020	2021	2022
Shetland	16,744	18,626	29,763	35,321	32,301	33,103	33,756
Highlands & Islands	12,377	14,097	20,733	26,046	24,293	25,724	u
Scotland	13,781	15,442	21,796	27,255	25,745	27,646	30,419
United Kingdom	15,388	17,443	23,455	29,930	28,414	30,526	33,227

u = figure has been suppressed due to uncertainty

Source: [Regional gross value added \(balanced\) per head and income components - Office for National Statistics \(ons.gov.uk\)](https://ons.gov.uk/regional-gross-value-added)

Fish Catching

Fish Landings in Shetland*										
	Whitefish		Shellfish		Herring		Mackerel		Other Pelagic	
	Tonnes	£ '000	Tonnes	£ '000	Tonnes	£ '000	Tonnes	£ '000	Tonnes	£ '000
1971	17,688	1,058	770	159	22,453	584	190	3.3	114	2.1
1981	52,175	4,386	695	328	871	57.2	826	49.6	0	0
1991	18,858	12,261	1,005	1,402	41,961	3,991	38,092	4,784	4,908	273
2001	12,481	12,777	1,234	1,634	12,087	2,977	23,895	10,312	10,373	500
Change in data collection method – from UK only vessels to landings by UK and Foreign vessels										
2011	13,480	24,676	1,965	4,647	9,440	4,608	44,136	56,113	2,146	1,120
2020	18,420	36,810	2,394	5,376	9,672	5,572	23,369	24,690	4.1	0.1
2021	16,553	35,075	2,457	5,441	10,713	6,949	19,116	22,598	5.9	1.4
2022	17,090	39,707	2,486	5,722	12,625	9,102	22,570	27,727	4.9	0.5

*1971-2001 figures: total landings by UK vessels only; 2011-2022 figures: total landings by UK and foreign vessels

Included in Whitefish Total*										
	Cod		Haddock		Monkfish		Sandeels		Whiting	
	Tonnes	£ '000	Tonnes	£ '000	Tonnes	£ '000	Tonnes	£ '000	Tonnes	£ '000
1971	498	35.3	13,834	856	40.6	2.3	0	0	3,646	190
1981	915	309	5,089	1,396	134	78.2	40,733	1,174	4,839	1,308
1991	2,220	2,740	2,132	2,447	1,544	3,545	8,248	393	2,365	1,437
2001	2,313	3,106	3,340	2,768	1,696	3,753	1,264	55	1,362	1,001
Change in data collection method – from UK only vessels to landings by UK and Foreign vessels										
2011	2,631	5,743	2,728	3,425	1,846	6,210	0	0	1,794	2,149
2020	2,758	7,946	2,591	4,345	2,204	6,168	0	0	3,233	4,513
2021	1,921	6,572	2,795	4,750	2,390	6,839	0	0	2,816	4,116
2022	2,174	7,962	4,199	6,351	2,419	7,439	0	0	2,299	3,524

*1971-2001 figures: total landings by UK vessels only; 2011-2022 figures: total landings by UK and foreign vessels

Source: [Sea fisheries statistics - gov.scot \(www.gov.scot\)](https://www.gov.scot/resources/documents/2022/04/Sea-fisheries-statistics-gov.scot)

Weight and Value of Catch by Species for 2022 (UK and Foreign Vessels)					
Species	Weight (Tonnes)	Value (£)	Species	Weight (Tonnes)	Value (£)
Catfish	70	150,432	Herring	12,625	9,102,440
Cod	2,174	7,962,280	Mackerel	22,570	27,726,978
Gurnard	33	18,293	Other Pelagic	5	513
Haddock	4,199	6,350,764			
Hake	874	2,242,072	Edible Crab	273	614,206
Lemon Sole	163	1,087,567	Velvet Crab	146	464,283
Ling	1,306	2,119,845	Scallops	1,462	2,713,696
Megrim	885	3,482,000	Squid	259	1,288,285
Monkfish	2,419	7,438,845	Whelks	298	259,343
Plaice	504	1,341,774	Other Shellfish	47	381,938
Pollack	139	475,826			
Saithe	1,656	2,347,587	Total Demersal	17,090	39,706,682
Skates & Rays	206	234,990	Total Pelagic	35,199	36,829,931
Whiting	2,299	3,524,377	Total Shellfish	2,486	5,721,750
Witch	60	89,692			
Other demersal	103	840,339	Grand Total	54,775	82,258,364

Source: [Supporting documents - Scottish Sea Fisheries Statistics 2022 - gov.scot \(www.gov.scot\)](https://www.gov.scot/resources/documents/2022/04/Supporting-documents-Scottish-Sea-Fisheries-Statistics-2022-gov.scot)

All Fish Landed in Shetland by Month 2022						
	Demersal		Pelagic		Shellfish	
Month	Tonnes	£	Tonnes	£	Tonnes	£
Jan	1,447	3,237,731	9,643	11,906,427	116	252,505
Feb	1,342	2,882,741	0	0	155	276,703
Mar	1,778	3,928,966	0	0	220	334,293
Apr	1,203	2,711,927	0	0	257	444,602
May	1,517	3,547,994	1	1,540	243	416,769
June	1,593	3,691,190	42	83,674	213	446,797
Jul	1,012	2,270,252	146	217,320	194	423,272
Aug	1,498	3,749,266	5,598	4,308,373	262	597,182
Sept	1,600	3,578,396	8,737	6,879,569	227	554,435
Oct	1,601	4,055,979	5,332	6,351,769	191	536,922
Nov	1,258	3,221,538	5,699	7,072,935	214	661,942
Dec	1,241	2,830,704	2	8,325	194	776,330
Total	17,090	39,706,682	35,199	36,829,931	2,486	5,721,750

Source: Marine Analytical Unit, Marine Directorate, Scottish Government

Average Quay Price per Tonne (£) - Shetland							
	1981	1991	2001	2011	2020	2021	2022
Cod	337.31	1,236.31	1,570.87	2,181.88	2,911.13	3,460.37	3,721.78
Haddock	274.25	1,143.52	961.40	1,247.73	1,678.64	1,705.02	1,513.93
Whiting	270.31	583.52	830.47	1,207.85	1,396.81	1,464.41	1,538.26
Monkfish	584.69	2,487.35	2,833.34	3,379.73	2,817.91	2,861.96	3,231.68

Source: Marine Analytical Unit, Marine Directorate, Scottish Government

Total Wetfish Landed in Shetland*								
	1971	1981	1991	2001	2011	2020	2021	2022
Tonnes	40,445	53,872	103,819	58,836	69,202	51,465	46,388	52,289
Value (£)	1,647,400	4,492,453	21,308,400	26,566,000	86,517,000	67,071,942	64,623,030	76,536,613

*1971-2001 figures: total landings by UK vessels only; 2011-2022 figures: total landings by UK and foreign vessels

Source: [Sea fisheries statistics - gov.scot \(www.gov.scot\)](http://www.gov.scot/sea-fisheries-statistics)

Landings by Shetland Vessels Outwith Shetland								
	1971	1981	1991	2001	2011	2020	2021	2022
Tonnes	3,322	28,805	38,953	61,210	51,171	72,798	93,116	85,528
Value (£)	382,056	2,741,617	8,077,129	23,075,860	48,525,688	70,980,889	87,098,892	80,237,281

Source: Marine Analytical Unit, Marine Directorate, Scottish Government

Total Fish Landings by Scottish Port*										
	1991		2001		2011		2021		2022	
	Tonnes	£ '000	Tonnes	£ '000	Tonnes	£ '000	Tonnes	£ '000	Tonnes	£ '000
Shetland	104,824	22,710	60,070	28,201	71,167	91,165	48,830	70,020	54,775	82,258
Peterhead	119,256	81,130	76,501	57,994	128,295	154,549	151,598	172,873	154,883	191,060
Scrabster	-	-	-	-	15,761	32,281	17,344	34,180	17,483	36,468
Fraserburgh	25,051	20,697	40,395	31,529	25,907	50,122	14,114	29,831	11,951	31,749
Lochinver	6,133	8,211	8,609	12,044	19,533	33,921	9,169	13,114	11,141	19,770
Ullapool	62,089	9,818	9,025	10,279	6,738	15,959	11,221	22,290	9,781	20,883
Ayr	17,022	12,558	7,990	6,881	13,554	13,000	4,805	11,091	5,806	11,387
Kinlochbervie	10,483	11,944	8,655	10,372	6,534	12,487	5,673	10,168	4,974	11,346
Campbeltown	5,478	7,887	5,505	8,768	6,044	15,139	4,050	12,422	3,374	12,371
Stornoway	5,984	9,569	4,368	9,518	3,108	9,445	2,880	12,189	2,923	12,554
Orkney	1,086	1,942	3,063	4,166	3,945	7,580	2,627	7,841	2,034	7,659
Eyemouth	5,385	7,603	2,737	3,893	2,213	6,944	1,826	6,855	2,029	7,893
Oban	4,685	7,391	5,161	8,846	3,160	7,836	2,340	9,759	1,910	9,563
Anstruther	2,346	3,178	1,137	1,884	1,401	4,589	1,409	4,782	1,597	4,326
Mallaig	9,792	14,005	8,251	10,937	4,421	10,127	1,391	4,838	1,385	5,935
Portree	-	-	2,841	7,756	1,968	7,887	1,105	8,115	1,166	8,113
Buckie	2,658	3,601	2,563	3,695	1,014	3,273	1,134	3,262	1,091	3,692
Aberdeen	32,996	26,427	22,532	16,049	1,269	3,990	1,012	4,391	766	3,329

*1971-2001 figures: total landings by UK vessels only; 2011-2022 figures: total landings by UK and foreign vessels

Source: [Sea fisheries statistics - gov.scot \(www.gov.scot\)](http://www.gov.scot)

Distribution of Licensed Vessels by Shetland District									
	1971	1981	1991	2001	2011	2020	2021	2022	
Creek 1 – South Mainland	13	11	3	17	18	14	14	15	
Creek 2 – Lerwick/Bressay	13	17	7	40	41	83	92	91	
Creek 3 – Whalsay	49	33	21	42	30	41	42	42	
Creek 4 – Out Skerries			4	9	6	5	5	4	
Creek 5 – Yell/Fetlar/Unst	29	14	5	23	14	13	12	11	
Creek 6 – Northmavine	14	7	4	9	5	3	5	5	
Creek 7 – Central Mainland	-	-	5	14	11	19	22	24	
Creek 8 - West Mainland	30	28	10	26	22	25	25	24	
Creek 9 – Scalloway/Burra/Trondra	68	45	32	55	28	29	30	30	
Total	216	155	91	235	175	232	247	246	

Source: Marine Analytical Unit, Marine Directorate, Scottish Government

Shetland Licensed Vessel Size - as at 31 st December				
	80ft and over	40-79.9ft	Under 40ft	Total
1971	0	64	152	216
1981	8	52	95	155
	Over 24m	Over 10m-24m	10m and Under	Total
1991	10	49	30	89
2001	27	31	177	235
2011	17	26	132	175
2020	24	20	188	232
2021	23	22	202	247
2022	23	20	203	246

Source: [Sea fisheries statistics - gov.scot \(www.gov.scot\)](http://www.gov.scot)

Employment in the Shetland Fishing Industry – Total number of posts, regularly and irregularly employed								
	1971	1981	1991	2001	2011	2020	2021	2022
Catching	636	542	486	598	433	534	469	585

Source: [Sea fisheries statistics - gov.scot \(www.gov.scot\)](http://www.gov.scot)

Marine Protection

The Marine Directorate is responsible for marine and fisheries compliance in Scottish waters. It operates 3 Marine Protection Vessels, 2 inshore boats and 18 coastal offices, which carry out vessel inspections. These inspections can take place whilst vessels are in port, in coastal waters, territorial waters (inside 12nm) or ex territorial waters (12-200nm).

Boardings of Vessels in Scottish Waters 2022 - By vessel nationality and location of boarding					
	In Port	Coastal	Territorial waters	Ex territorial waters	Total
Denmark	-	2	1	13	16
Faroe	-	1	-	-	1
France	26	72	1	14	113
Germany	-	3	-	7	10
United Kingdom	162	939	258	94	1,453
Ireland	-	2	4	13	19
Netherlands	-	-	-	6	6
Norway	1	5	-	10	16
Spain	38	54	-	5	97
Sweden	-	1	-	2	3
Unknown	-	-	2	-	2
Total	227	1,079	266	164	1,736

Source: [Marine and fisheries compliance: boardings of vessels in Scottish waters - gov.scot \(www.gov.scot\)](http://www.gov.scot)

Shellfish Aquaculture

The annual Scottish Shellfish Farm Production Survey collates regional data on the production of Mussels, Pacific oyster, Native Oyster, Queens and Scallops. Of these species, Shetland produced Mussels and a very small amount of Pacific Oyster (around 1,000 shells) in 2022. With data showing that historically Shetland does not produce any significant volume of other species, only data on mussel production is presented for the tonnage and value produced per year.

Mussel Production by Scottish Marine Region								
	2013		2020		2021		2022	
Marine Region	Tonnage	Value (£)*	Tonnage	Value (£)*	Tonnage	Value (£)*	Tonnage	Value (£)
Argyll & Clyde	770	1,098,790	425	399,925	497	452,270	501	475,950
Outer Hebrides	528	753,456	282	265,362	389	353,990	720	684,000
West Highlands, Moray Firth & North Coast	1,122	1,601,094	527	495,907	854	777,140	707	671,650
Shetland	4,337	6,188,899	4,427	4,165,807	6,850	6,233,500	7,164	6,805,800
Scotland	6,757	9,642,239	5,661	5,327,001	8,590	7,816,900	9,092	8,637,400

*Average prices (real) have been adjusted for inflation based on 2022 price estimates

Figures for Argyll & Clyde and the West Highlands, Moray Firth & the North Coast have been merged for commercial confidentiality

Source: [Scottish Shellfish Farm Production Survey 2022 - gov.scot \(www.gov.scot\)](https://www.gov.scot/resources/consultation-papers/collections/documents/Scottish-Shellfish-Farm-Production-Survey-2022.pdf)

Mussel Production (Tonnes) & Shetland Production as a Percentage of Total Scottish Production										
	2001		2011		2020		2021		2022	
	Table	On-growing	Table	On-growing	Table	On-growing	Table	On-growing	Table	On-growing
Shetland	822	0	4,567	178	4,427	3,310	6,850	2,302	7,164	2,431
Scotland	2,988	4	6,996	282	5,661	4,127	8,590	3,253	9,092	2,506
Percent	27.5%	0%	65.3%	63.1%	78.2%	80.2%	79.7%	70.8%	78.8%	97%

Active and Producing Shellfish Farm Sites 2022 (all species)							
Region	Highland	Orkney	Shetland	Strathclyde	Western Isles	All Scotland	
Active	62	5	143	49	41	300	
Producing	29	1	95	26	16	167	

Shetland - No of Shellfish Businesses / Employment (all species)					
	2001	2011	2020	2021	2022
No, of Businesses	37	29	24	24	23
Full-time Staff	21	61	58	55	59
Part-time Staff	37	46	21	26	22
Casual Staff	27	15	23	20	13
Total Staff	85	122	102	101	94

Source: [Scottish shellfish farm production surveys - gov.scot \(www.gov.scot\)](https://www.gov.scot/resources/consultation-papers/collections/documents/Scottish-shellfish-farm-production-surveys.pdf)

Finfish Aquaculture

Manpower and Production by Region											
Region	Year	Staff		Annual Prod. (Tonnes)	Prod. (T/man)	Grilse		Pre-salmon		Salmon	
		F/T	P/T			Tonnes	Mean Wt. (kg)	Tonnes	Mean Wt. (kg)	Tonnes	Mean Wt. (kg)
Shetland	1991	202	102	10,614	35	826	2.8	4,322	3.1	5,466	3.9
	2001	227	52	39,745	142	4,905	3.7	16,441	4.3	18,269	4.4
	2011	189	22	35,493	168	4,611	4.7	16,071	5.1	14,693	4.5
	2020	280	12	40,749	140	13,970	5.7	11,167	6.3	15,256	6.0
	2021	276	10	43,770	148	15,644	5.7	14,074	5.6	14,052	6.4
	2022	270	18	39,258	136	11,908	4.8	13,423	5.7	13,927	5.1
Scotland	1991	1,014	272	40,593	32	7,449	2.1	13,577	2.6	19,567	3.2
	2001	1,066	191	138,520	110	42,066	3.8	54,473	4.7	40,754	4.5
	2011	923	90	158,018	156	35,146	4.6	55,959	5.0	66,606	4.8
	2020	1,557	73	192,129	118	88,025	4.8	57,808	5.3	45,088	5.5
	2021	1,441	54	205,393	137	93,346	5.0	51,349	4.6	60,664	5.7
	2022	1,426	82	169,194	112	65,163	4.4	52,738	4.8	51,158	5.2

Survival and Production in Smolt Year Classes										
Region	Yr. Smolts put to Sea	Smolt Input (000's)	Harvest in Year 0		Harvest in Year 1		Harvest in Year 2		Total Harvest	
			No. (000's)	%	No. (000's)	%	No. (000's)	%	No. (000's)	%
Shetland	1996	6,234	-	-	3,828	61.4	1,141	18.3	4,969	79.7
	2001	17,398	123	0.7	6,465	37.2	7,973	45.8	14,561	83.7
	2011	11,206	49	0.4	4,911	43.8	2,709	24.2	7,669	68.4
	2019	7,613	114	1.5	4,241	55.7	2,186	28.7	6,541	85.9
	2020	10,072	84	0.8	5,246	52.1	2,735	27.2	8,065	80.1
	2021	10,090	0	0	4,850	48.1				
	2022	10,571	0	0						
Scotland	1996	34,908	315	0.9	20,245	58.0	5,148	14.7	25,708	73.7
	2001	48,643	557	1.1	23,528	48.4	15,619	32.1	39,704	81.6
	2011	42,733	109	0.3	21,502	50.3	11,283	26.4	32,894	77.0
	2019	52,990	319	0.6	28,529	53.8	10,602	20.0	39,450	74.4
	2020	52,492	323	0.6	29,697	56.6	9,796	18.7	39,816	75.9
	2021	51,131	16	0.03	25,777	50.4				
	2022	55,261	79	0.1						

Salmon Production by Scottish Marine Region								
Marine Region	2013		2020		2021		2022	
	Tonnage	Value* £ '000	Tonnage	Value* £ '000	Tonnage	Value* £ '000	Tonnage	Value* £ '000
Argyll & Clyde	34,924	172,385	36,367	186,126	36,085	185,982	31,236	227,086
Orkney	11,479	56,660	21,612	110,610	24,407	125,794	18,786	136,574
Outer Hebrides	36,817	181,729	44,639	228,462	31,069	160,130	31,114	226,199
North Coast & West Highlands	43,320	213,828	48,762	250,076	70,062	361,100	48,800	354,776
Shetland	36,694	181,122	40,749	208,553	43,770	225,591	39,258	285,406
Scotland	163,234	805,723	192,129	983,316	205,393	1,058,596	169,194	1,230,040

*Average prices (real) have been adjusted for inflation based on 2022 price estimates

Source: [Scottish fish farm production surveys - gov.scot \(www.gov.scot\)](http://www.gov.scot)

Fish & Shellfish Processing

Food Standards Agency Approved Fish and Shellfish Establishments, Shetland (May 2022)	
Activities approved	No. of approved establishments
Fisheries products processing plant – Auction Hall	2
Fisheries products processing plant (caught fish or aquaculture)	13
Live bivalve molluscs purification centre	1
Live bivalve molluscs dispatch centre	8

Source: [Approved food establishments | Food Standards Agency](#)

Agriculture

Main and Minor Holdings - Shetland							
	1971	1981	1991	2001	2011	2021	2023
Land Use (ha):							
Tillage	1,410	1,062	740	437	257	344	364
Grassland & Crops	8,407	8,400	14,304	22,016	26,789	28,854	30,365
Rough/Common grazing	129,019	133,160	130,943	124,021	121,934	117,506	114,639
Total area rented	38,130	36,046	36,781	43,060	42,479	40,930	46,312
Total area owned	28,161	30,368	33,840	35,622	38,432	41,027	40,298
No of holdings	2,439	2,240	2,311	2,076	2,035	1,750	1,629
No of common grazings	93	93	100	141	160	155	163
Area Under Crops (ha):							
Grass (Ex. Rough grazing)	6,998	7,338	13,563	21,580	26,531	28,510	30,001
Barley & oats	857	511	214	50	108	68	54
Turnips & swedes	134	103	106	40	11	11	9
Kale & cabbage	73	34	30	15	6	3	7
Potatoes	256	232	144	53	17	12	10
Vegetables for human consumption	x	x	20	17	5	7	5
Stockfeeding Crops	x	x	94	89	65	115	105
All other crops	17	25	11	41	20	16	104
Livestock							
Beef cows & heifers	2,492	1,896	2,129	2,172	2,440	2,298	2,319
Dairy cows & heifers	791	593	655	617	602	389	317
Total cattle	6,945	5,103	5,701	5,756	5,245	4,792	4,649
Breeding ewes & gimmers	n/a	n/a	210,630	215,480	150,847	147,650	147,930
Total sheep	264,779	297,558	387,468	393,686	280,364	289,566	293,907
Pigs	9	83	28	112	135	116	c
Poultry	12,950	8,672	4,428	4,972	5,426	4,868	2,648
Goats & kids	x	x	82	47	58	69	61
Horses & ponies	x	x	564	829	1,328	1,023	963
Employment							
F/T & P/T employees	222	205	244	336	240	344	318
F/T & P/T occupiers	439	763	864	781	531	563	539
Others (including occupiers less than half time and casual/seasonal labour)	584	412	1,364	1,473	1,355	1,196	1,139
Total workforce	1,245	1,380	2,472	2,590	2,126	2,103	1,996

c - data suppressed to prevent disclosure of individual holdings; x - data not available

2022 data not available as census was not carried out that year

Source: Scottish Government Rural Payments and Inspections Division (SGRPID)

Scottish Government & EU Assistance (£) - Shetland						
	1986	1991	2001	2011	2021	2022
Less Favoured Area	Old schemes, not comparable to current	Old schemes, not comparable to current	1,920,000	2,560,000	2,571,513	3,550,128
Basic Payment			Apart from LFA above, old schemes, not comparable to current	Apart from LFA above, old schemes, not comparable to current	6,754,814	6,881,620
Beef Support					229,410	227,461
Sheep Upland Support					187,107	184,117
Crofting Agricultural					451,160	473,319
Scottish agricultural capital					165,091	0
Agri-environment climate					250,493	197,762
Financial reimbursement			32,759	0		
Total	2,220,000	4,900,000	6,970,000	9,130,000	10,642,347	11,514,407

Source: Scottish Government Rural Payments and Inspections Division (SGRPID)

Livestock Imports & Exports - Shetland							
Imports	1971	1981	1991	2001	2011	2021	2022
Cattle	n/a	n/a	n/a	n/a	75	143	99
Horses	n/a	n/a	n/a	n/a	92	31	41
Pigs	n/a	n/a	n/a	n/a	6	114	261
Sheep	n/a	n/a	n/a	n/a	648	666	809
Exports							
Cattle	1,974	2,066	2,117	1,031	1,983	1,338	1,002
Horses	417	407	239	232	200	133	137
Pigs	0	0	0	0	2	0	2
Sheep	43,464	60,542	99,404	114,251	92,569	55,109	100,466

Source: Lerwick Port Authority

Animal Produce	1971	1981	1991	2001	2011	2021	2022
Registered slaughterhouses/abattoirs	9	8	4	3	1	1	1
Sheep slaughtered	8,417	9,592	8,712	3,520	n/a	3,497	3,692
Cattle slaughtered	485	278	339	76	n/a	367	362
Pigs slaughtered	0	0	33	167	n/a	211	314
Wool production (est. kg)	218,000	245,000	337,000	323,220	300,487	322,437	313,725
Milk - No. of Dairy units	23	23	16	7	n/a	2	2
Milk production (litres)	1,428,975	2,069,550	2,584,564	2,410,045	n/a	1,410,540	1,323,152

Sources: Shetland Livestock Marketing Group (SLMG); Wool production: Shetland Wool Brokers & Jamiesons of Shetland; Milk: Shetland Farm Dairies

Animal Sales - No. of Animals Sold Through SLMG Auction Ring					
	2019	2020	2021	2022	2023
Cattle Throughput	525	545	757	737	654
Sheep Throughput	44,973	52,549	67,858	74,816	76,579
Ponies Throughput	70	41	64	78	58

Source: Shetland Livestock Marketing Group (SLMG)

Food Standards Agency Approved Meat and Animal Produce Establishments, Shetland (May 2022)	
Activities approved	No. of approved establishments
Egg packing centres	2
Dairy products processing plant	1
Slaughterhouse, cutting, meat preparation and processing plant	1

Source: [Approved food establishments](#) | [Food Standards Agency](#)

Visitors/Tourism

The last Shetland visitor surveys were carried out in 2017 and 2019. These surveys captured independent travellers entering Shetland through Holmsgarth Ferry Terminal or Sumburgh Airport, and did not include cruise ship passengers.

Volume, Average Number of Nights and Value of Visitors*												
Purpose of Visit	Stay - Av. No. Nights		Visitors				Av. Spend/trip		Total Spend			
	2017	2019	2017		2019		2017	2019	2017		2019	
			No.	%	No.	%	£	£	£(M)	%	£(M)	%
Leisure	6.6	5.6	38,096	52	40,865	51	343.32	520.52	13.08	56	21.27	60
VFR**	6.8	6.9	8,791	12	16,827	21	191.48	326.66	1.68	7	5.50	15
Business	9.3	5.1	26,374	36	22,436	28	320.40	402.04	8.45	37	9.02	25
Total			73,261		80,128				23.21		35.79	

Origin of Leisure Visitors to Shetland (%)*						
Place of Residence	2017			2019		
	Leisure	VFR**	Business	Leisure	VFR**	Business
Scotland	30	54	65	19	54	67
Rest of UK	37	35	24	37	34	21
Europe	19	6	9	23	5	8
North America	8	2	0	11	4	1
Other Overseas	7	4	1	10	4	2

*Excludes cruise ship passengers

**VFR = Visiting Friends and Relatives

Sources: 2017 Visitor Survey: [PowerPoint Presentation \(shetland.gov.uk\)](#); 2019 Visitor Survey: [Shetland islands visitor survey 2019 \(visitscotland.org\)](#)

Cruise Ships (Lerwick Harbour)									
	1981	1991	2001	2011	2018	2019	2020	2021	2022
Cruise Ship Arrivals	x	21	42	50	91	99	2	18	94
Cruise Ship Passengers	3,564	5,240	11,601	30,747	90,336	76,233	1,499	8,642	58,450

x - data not available

Source: Lerwick Port Authority

Cruise Ship Passenger Nationality (Lerwick Harbour)					
	2018	2019	2020	2021	2022
American	30,198	21,763	18	4	20,618
Australian	3,256	2,619	59	1	640
British	22,623	18,495	933	8,582	14,222
Canadian	4,241	2,607	4	2	1,446
Dutch	1,605	1,476	125	0	541
French	1,143	848	4	1	577
German	14,773	16,922	21	6	15,851
Italian	1,266	1,132	1	5	969
Spanish	1,059	1,329	1	0	441
Other	10,172	9,042	333	41	3,145
Total	90,336	76,233	1,499	8,642	58,450

Source: Lerwick Port Authority

Economic Impact of Tourism Visitors - Indexed to 2023 prices (£'000)							
Visitor Type	2012	2018	2019	2020	2021	2022	2023
Staying visitor	44,890	56,200	54,880	21,950	34,190	53,050	58,180
Day visitor	1,421	3,343	3,032	127	460	2,371	4,829
All Visitor Types (£'000)	46,311	59,543	57,912	22,077	34,650	55,421	63,009

Source: Global Tourism Solutions (UK) Ltd STEAM Report

Paid Accommodation Supply													
	1981	1991	2001	2011		2020		2021		2022		2023	
Accom. Type	Beds	Beds	Beds	No.	Beds	No.	Beds	No.	Beds	No.	Beds	No.	Beds
Hotels	573	595	544	37	776	45	802	48	853	36	760	35	756
Guest houses /B&Bs	306	429	369	50	382	17	195	18	205	14	139	14	139
Self-Catering	271	538	322	168	1,034	204	1,300	205	1,306	197	1,205	197	1,211
Hostels	81	217	390	8	501	13	542	13	547	13	552	13	591
Total	1,231	1,779	1,625	263	2,693	279	2,839	284	2,911	260	2,656	259	2,697

No. = No. of Establishments; Beds = No. of bed spaces

Sources: 1981-2001 – VisitShetland; 2011-2023: Global Tourism Solutions (UK) Ltd STEAM Report

Annual Visitor Numbers for Shetland's Top Visitor Attractions							
Visitor Attraction	2001	2011	2019	2020	2021	2022	2023
Bressay Heritage Centre	[x]	1,200	651	0	532	905	1,104
Fair Isle	[x]	[x]	1,233	251	936	876	563
Fetlar Interpretive Centre	[x]	1,022	1,732	0	1,227	1,616	--
Hermaness NNR	1,600	6,000	8,160	1,753	6,432	9,906	11,970
Hoswick Visitor Centre	6,500	11,404	20,096	5,578	11,263	17,291	20,078
Island of Noss	757	1,655	2,239	0	851	936	1,597
Jarlshof*	10,790	13,761	22,439	0	0	18,480	27,176
Old Haa	2,000	3,631	5,456	0	2,238	4,237	4,695
Quendale Water Mill	1,744	3,681	3,512	0	1,476	2,908	2,981
Scalloway Museum	[x]	9,182	23,826	577	2,093	10,927	15,399
Shetland Crofthouse Museum	3,969	4,305	3,905	0	0	3,642	3,718
Shetland Distillery Company	Opened 2009	[x]	1,225	30	291	518	480
Shetland Museum and Archives	34,367	87,403	65,832	10,702	10,887	33,263	43,924
Shetland Textile Museum	[x]	[x]	3,727	337	1,574	3,275	4,804
Tangwick Haa Museum	2,823	4,792	11,626	13	0	3,461	6,585
Unst Boat Haven	3,553	4,161	4,143	5	2,424	2,641	3,596
Unst Heritage Centre	2,980	3,262	4,921	19	2,322	3,317	4,394

Note: 2020 - 2022 figures were impacted by Covid restrictions and the cost of living crisis

[x] No data; * Jarlshof was a seasonal site until 2022, after which it opened year round

Source: Moffat Centre Visitor Attraction Barometer

Oil & Gas

Sullom Voe Terminal

The Sullom Voe Terminal is situated at Calback Ness on a site of approximately 400 hectares (1,000 acres) on the shores of Sullom Voe, 46km (29 miles) north of Lerwick. Historically operated by BP Exploration Operating Company on behalf of companies participating in the regional pipeline groups, the terminal's operation was passed to mature asset specialist EnQuest in late 2017.

The terminal has a throughput design capacity of 1.2 million barrels of crude oil per day, and reached a peak in 1984 with a total receipt of 439,434,656 barrels (58,328,785 tonnes). Although throughput has declined in recent years, the terminal remains strategically important for the UK energy sector, with the capacity to handle output from oilfields to the west and East of Shetland, and reconfigure parts of the terminal to develop renewable energy and decarbonisation opportunities.

UK Port Traffic

While the tonnage of port traffic has decreased since the peak of the oil industry, Sullom Voe Terminal still handles millions of tonnes of cargo every year. In 2022, it ranked 19th on a list of UK ports for total tonnage, 11th for Oil and Gas traffic and 8th for Crude Oil shipments. In a Scottish ports context, Sullom Voe was 4th for total tonnage and 3rd for oil and gas traffic.

UK Total Port Traffic 2022 (Foreign & Domestic)			UK Bulk Fuel & Crude Oil Ports 2022		
Port	'000 Tonnes	%UK Traffic	Port	'000 Tonnes	%UK Traffic
London	54,880	12.0	Milford Haven	38,129	21.2
Grimsby & Immingham	50,166	10.9	Southampton	19,893	11.1
Liverpool	33,622	7.3	Forth	17,247	9.6
Milford Haven	38,902	8.5	Grimsby & Immingham	16,053	8.9
Southampton	31,278	6.8	Tees & Hartlepool	15,608	8.7
Tees & Hartlepool	25,378	5.5	London	12,931	7.2
Felixstowe	22,197	4.8	Liverpool	11,019	6.1
Dover	18,369	4.0	Rivers Hull & Humber	10,079	5.6
Belfast	18,372	4.0	Clyde	8,159	4.5
Forth	20,529	4.5	Medway	7,276	4.0
Medway	13,373	2.9	Sullom Voe	5,603	3.1
Rivers Hull & Humber	10,957	2.4	UK Total	180,026	
Hull	8,752	1.9			
Clyde	9,812	2.1	UK Crude Oil Tonnage Only 2022		
Port Talbot	5,980	1.3	Southampton	12,460	15.9
Manchester	6,215	1.4	Tees & Hartlepool	11,088	14.1
Bristol	8,528	1.9	Forth	10,711	13.6
Glensanda	6,041	1.3	Rivers Hull & Humber	10,079	12.8
Sullom Voe	5,629	1.2	Milford Haven	8,818	11.2
All UK Ports	458,931		Liverpool	8,778	11.2
All Scottish Ports	59,249		Clyde	6,244	8.0
% Scottish Total	9.5		Sullom Voe	5,603	7.1
			UK Total (Crude Oil only)	78,517	

Source: [Port and domestic waterborne freight statistics: data tables \(PORT\) - GOV.UK \(www.gov.uk\)](https://www.gov.uk/government/statistics/port-and-domestic-waterborne-freight-statistics-data-tables-port)

Sullom Voe Terminal - Oil Throughput (Tonnes)								
	1978	1981	1986	1991	2001	2006	2013	2022
Brent Pipeline	856,991	23,116,490	38,692,099	20,263,701	13,368,931	6,369,416	4,085,132	1,211,549
Ninian Pipeline	92,186	15,545,240	16,875,047	15,576,512	5,994,252	4,525,451	1,258,300	962,812
Schiehallion	-	-	-	-	5,441,468	3,281,822	162,741	0
Clair	-	-	-	-	-	1,244,317	551,364	3,506,589
SGP (Laggan)	-	-	-	-	-	-	-	59,291
Total	949,177	38,661,730	55,567,146	35,840,213	24,804,651	15,421,006	6,057,537	5,740,241

Sullom Voe Terminal - Average Barrels Per Day								
	1978	1981	1986	1991	2001	2006	2013	2022
Brent Pipeline	177,526	478,094	800,134	419,864	277,732	131,859	84,327	25,011
Ninian Pipeline	23,439	317,083	346,513	322,592	124,520	93,695	25,979	19,927
Schiehallion	-	-	-	-	110,966	62,933	3,110	0
Clair	-	-	-	-	-	24,804	10,427	66,193
SGP (Laggan)	-	-	-	-	-	-	-	1,227
Total	200,965	795,177	1,146,647	742,456	513,218	313,291	123,843	112,358

Sullom Voe Terminal - Total Barrels ('000s)								
	1978	1981	1986	1996	2001	2006	2013	2022
Brent Pipeline	6,391.0	174,504.3	292,048.8	176,442.3	101,372.2	48,128.7	30,779.2	9,129.1
Ninian Pipeline	679.7	155,735.5	110,640.2	108,654.8	45,450.0	34,198.8	9,482.4	7,273.2
Schiehallion	-	-	-	-	40,502.6	22,970.4	1,135.3	0
Clair	-	-	-	-	-	9,053.6	3,806.0	24,160.3
SGP (Laggan)	-	-	-	-	-	-	-	447.7
Total	7,070.7	330,239.8	402,689.0	285,097.1	187,324.8	114,351.5	45,202.9	41,010.3

Sullom Voe Terminal - Tankers Using Port								
	1979	1981	1986	1991	2001	2006	2013	2022
Oil	270	432	654	423	295	199	87	68
Gas	0	0	112	45	12	11	0	0

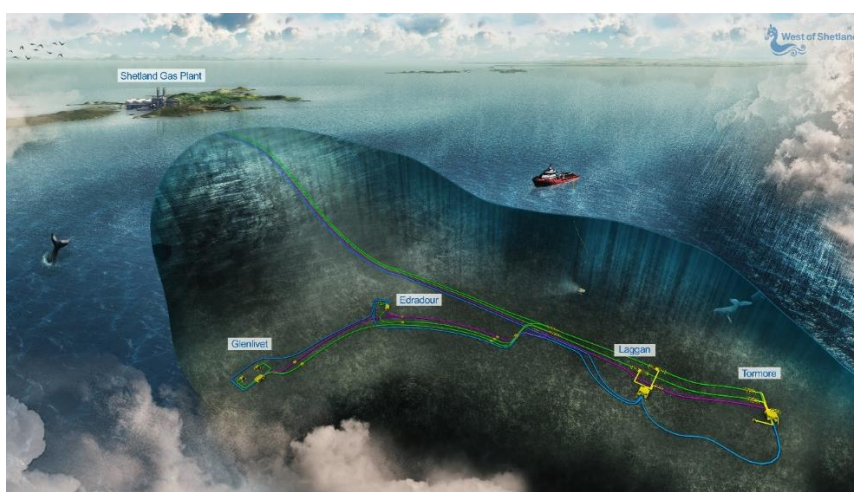
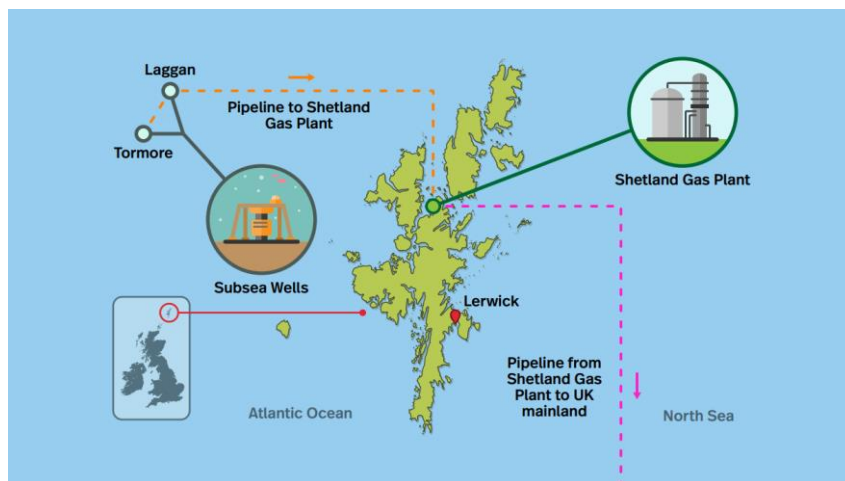
Sullom Voe Terminal - Gas Throughput (Tonnes)						
	1982	1986	1991	2001	2008	2022
Brent Pipeline - Propane	174,889	476,742	89,961	32,479	8,443	0
Brent Pipeline - Butane	128,624	375,641	57,906	22,647	6,847	0
Ninian Pipeline - Propane	176,805	346,478	260,536	57,746	11,322	0
Ninian Pipeline - Butane	115,072	254,621	190,250	41,542	10,412	0
Total Propane	351,694	823,220	350,497	90,225	19,765	0
Total Butane	243,696	630,262	248,164	64,189	17,259	0

Source: Enquest – Sullom Voe Terminal

Shetland Gas Plant, Operated by TotalEnergies

TotalEnergies' West of Shetland gas development encompasses the Laggan, Tormore, Edradour and Glenlivet offshore fields, and the onshore Shetland Gas Plant. Designed to withstand harsh weather conditions, the development involved the drilling of subsea wells in deep waters west of Shetland and the installation of the longest subsea pipeline network ever seen on the UK continental shelf.

The gas from the wells is processed at an onshore facility located next to the Sullom Voe Oil Terminal. Under development from 2010 onwards, first gas from West of Shetland was produced in February 2016.



Safety	2021	2022	2023
Lost-time injury*	0	0	0
Total Recordable Incident Rate**	0	0	0
First Aid Cases	0	1	0

*Accident that has caused physical injury that prevents the person from returning to work the following day

**Number of recordable injuries per million Man hours worked

Operations	2021	2022	2023
Delivered Production (kBOEpd)*	37.1	29	18.8
Site Manhours	366,364	390,113	378,917
Average number of persons on site per day	95	90	98
Local Personnel	49%	51%	50%

*Gas production expressed as *thousands of barrels of oil equivalent per day*

Source: Total Energies E&P UK

Third Sector

There is a strong tradition of volunteering in the isles, and almost all community and social activity in the rural areas rely on volunteers to make it happen. Over 650 third sector organisations are registered with Voluntary Action Shetland (VAS), Shetland’s third sector interface, of which 272* are charities registered with OSCR.

However, VAS are also aware of a number of voluntary and community organisations which are not registered with them, and estimate the total number of third sector organisations in Shetland will be nearer 1,000 or more.

*Source: [OSCR | Register Search](#) for Shetland based charities as at Nov 2023

The third sector is important to Shetland, both in social impact and economical benefit. This is reflected in the Shetland Partnership, which includes third sector and community organisation partners alongside local and national government organisations. This partnership is responsible for the design, development and delivery of The Shetland Partnership Plan. [Shetland Partnership – Shetland Partnership](#).

The scale, and vast range, of the third sector and volunteering in Shetland makes it impossible to present a full picture of all organisations/the sector. The data in this section presents just a flavour of the scale of this sector.

Volunteering Rates

The Scottish Household Survey records formal volunteering rates (unpaid help to organisations or groups) annually and informal volunteering rates (giving unpaid help directly - not via an organisation or group - to other people or places, not including relatives) every two years. Due to methodological changes during Covid, the last comparable dataset for questions on informal volunteering is for 2018.

Volunteering Rates (volunteers aged 16 or over) - volunteered in last 12 months						
Formal volunteering					Any volunteering – formal, informal or both	
	2019	2020	2021	2022	2018	2022
Eilean Siar	26%	Very low response rate due to Covid. Local Authority level results not published as below reporting threshold	40%	22%	46%	31%
Highland	26%		31%	29%	58%	53%
Orkney	34%		42%	22%	60%	63%
Shetland	47%		48%	44%	71%	75%
Scotland	26%	26%	27%	22%	48%	46%

Source: Scottish Household Survey, [Scottish Household Survey: publications - gov.scot \(www.gov.scot\)](#)

Saltire Awards

Saltire awards are national awards designed to recognise and reward those aged 12-25 years volunteering in their community. Awards are presented annually to individuals who complete 10 to over 500 hours volunteering. Both the volunteer and the organisation they are volunteering with need to be registered with Saltire to gain awards, therefore the numbers below do not represent all young volunteers in Shetland, just those registered with Saltire.

Saltire Awards (Awarded to young volunteers registered with Saltire)				
	Volunteers Registered	No. achieving Saltire Award	Total voluntary hours completed by all Awardees	No. of Groups, schools and organisations helped
2018	954	136	17,765	56
2019	1098	127	20,730	50
2020	999	141	14,940	50
2021	963	128	2,910	24
2022	859	67	10,500	25

Source: Voluntary Action Shetland - [Saltire Awards | Voluntary Action Shetland](#)

Grant Funding Secured

Third sector organisations in Shetland attract grant funding from many local, national and international sources, with hundreds of funding organisations. The table below outlines some of the larger local and national funding organisations, along with a few other funding organisations for which data is easily accessible online.

Grant Awards to Third Sector Organisations in Shetland 2022/23	
Funding Body	Total amount awarded 2022/23 (£)
Shetland Charitable Trust	9,004,656
Shetland Community Benefit Fund	382,738.89
Shetland Islands Council - Coastal Communities Fund	775,599.90
Shetland Islands Council – Community Grant Schemes	407,935.07
Scottish Government - Community Led Local Development	212,149.78
Scottish Government - Islands Programme	340,600
Scottish Government - Place Based Investment Fund	108,000
Scottish Government - Third Sector Unit	188,000
Scottish Government - Mental Health and Wellbeing Fund	74,978.37
National Lottery - Awards for All	26,868
National Lottery - Community Led/Improving Lives	549,668
National Lottery - Heritage Fund*	10,000
Creative Scotland: Awards Listings Creative Scotland	458,694
Highlands & Islands Enterprise	480,384
Historic Environment Scotland	159,282
NatureScot	96,288
VisitScotland	41,600
The Robertson Trust: News and blogs The Robertson Trust	24,000
STV Children’s Appeal	11,000
Shared Care Scotland: Funded projects Shared Care Scotland	82,405
Tesco Community Grants: What we’ve funded (tescostrongerstarts.org.uk) (2022 funding)	6,450
Architectural Heritage Fund*	10,000
BBC Children in Need	1,000
Co-operative Group*	23,380
R S Macdonald Charitable Trust*	12,052
The Trussell Trust*	5,000
Total**	£13,992,229

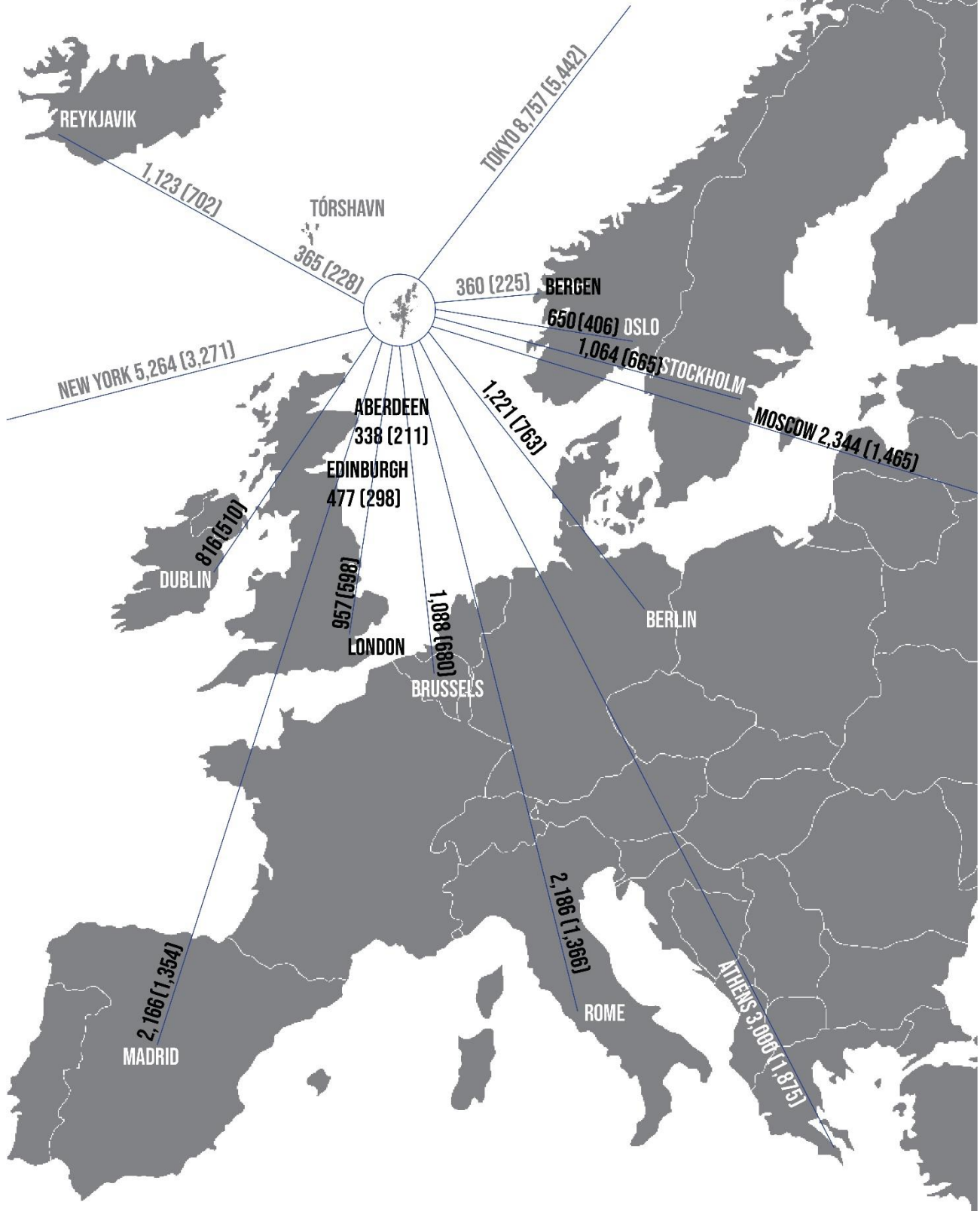
Sources: Online (where links are provided), *Source: [360Giving GrantNav \(threesixtygiving.org\)](#), SIC, and individual funding organisations

** Accounting for a fraction of the total organisations supporting local third sector groups, this total only gives an indication of the scale of annual grant income generated by this sector. The actual annual total will be higher

3 Physical - Location Map

APPROXIMATE DISTANCES FROM SHETLAND

In kilometres (statute miles)



Physical Characteristics Map

Shetland: Physical Characteristics

Distance by road in kilometres (miles) from Lerwick:

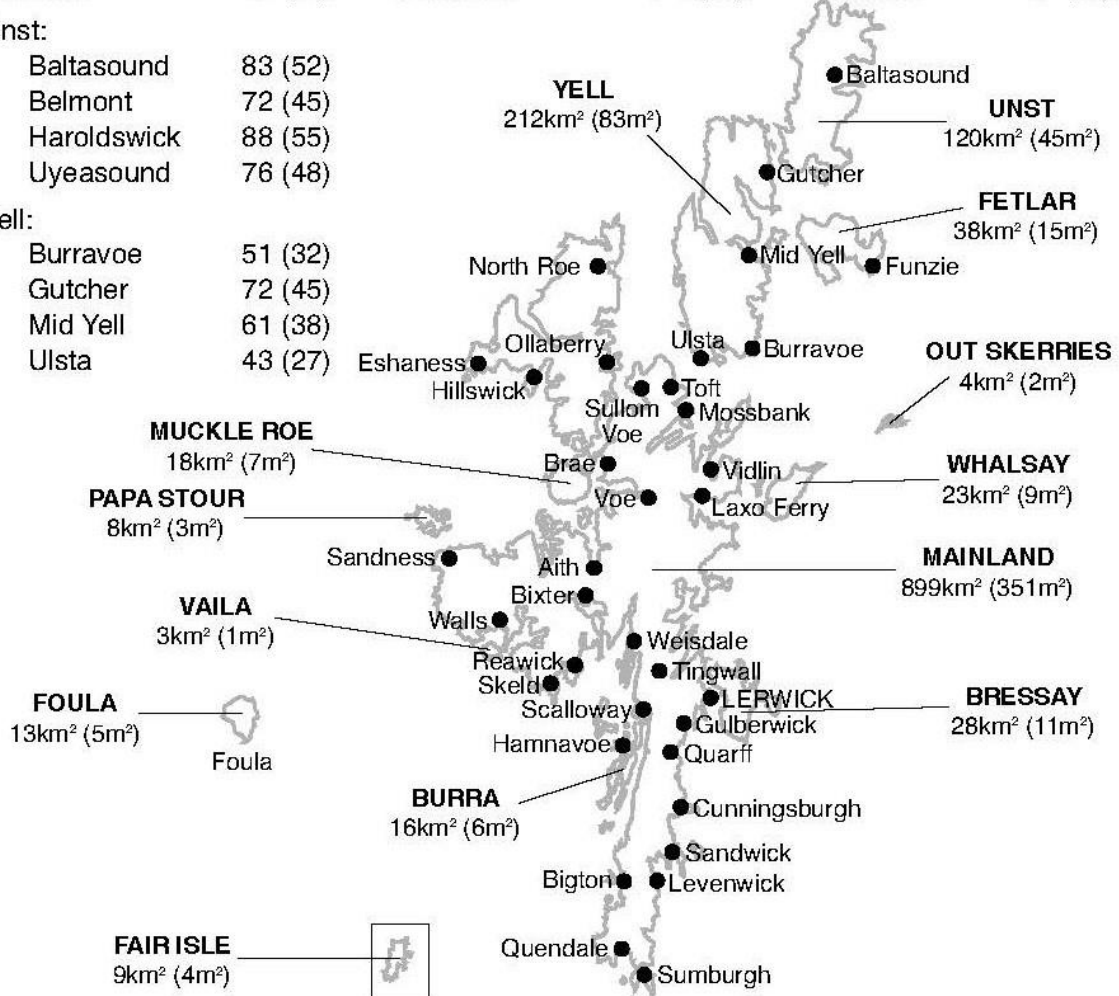
Aith	34 (21)	Laxo Ferry	35 (22)	Scalloway	13 (8)
Bigton	30 (19)	Levenwick	28 (18)	Skeld	40 (25)
Bixter	27 (17)	Mossbank	43 (27)	Sullom Voe	46 (29)
Brae	35 (22)	North Roe	61 (38)	Sumburgh	40 (25)
Cunningsburgh	18 (11)	Ollaberry	53 (33)	Tingwall	10 (6)
Eshaness	62 (39)	Quarff	11 (7)	Toft Ferry	43 (27)
Girlsta	16 (10)	Quendale	38 (24)	Vidlin	38 (24)
Gulberwick	6 (4)	Reawick	38 (24)	Voe	29 (18)
Hamnavoe, Burra	16 (10)	Sandness	46 (29)	Walls	40 (25)
Hillswick	56 (35)	Sandwick	24 (15)	Weisdale	17 (11)

Unst:

Baltasound	83 (52)	
Belmont	72 (45)	
Haroldswick	88 (55)	
Uyeasound	76 (48)	

Yell:

Burravoe	51 (32)	
Gutcher	72 (45)	
Mid Yell	61 (38)	
Ulsta	43 (27)	



Total Area of Shetland: 1,468 square kilometres (567 square miles)*

Total Length of coastline: approx 2,702 kilometres (1,697 miles)**

* Ordnance Survey, 1988

** Dr Lorraine Gray, 2007

Number of islands: 100+

Number of inhabited islands: 15

4 Weather/Climate

Observations are recorded in Shetland by staff employed by the Meteorological Office in Lerwick. There are also Auxiliary Synoptic Stations in Fair Isle and Foula. Observations from the Lerwick Observatory began in 1921, although the first full year of recordings were 1922. The following data was recorded at the Lerwick Observatory (60°08'N, 01°11'W; Wind vane 93m above sea level).

Temperature (°C)						
	2022		Mean (°C)		Extreme Daily Values (°C)	
	Monthly Average (°C)		(1931-2022)		(1922-2022)	
Month	Max	Min	Max	Min	Max (Year)	Min (Year)
Jan	7.4	3.2	5.5	1.5	12.8 ('47)	-8.9 ('52 & '59)
Feb	6.0	1.0	5.4	1.2	11.7 ('45)	-7.4 ('10)
Mar	7.8	4.2	6.3	2	13.3 ('61)	-8.3 ('47)
Apr	8.0	3.4	8.1	3.1	16.1 ('42)	-5.7 ('68)
May	11.6	6.8	10.4	5.3	20.7 ('92)	-2.9 ('23)
Jun	13.7	9.3	12.6	7.7	23.3 ('58)	-0.6 ('51)
Jul	14.2	10.1	14.2	9.6	23.4 ('91)	3.5 ('65)
Aug	14.6	10.4	14.4	9.9	22.1 ('97)	2.3 ('28)
Sept	13.5	9.2	12.8	8.5	19.4 ('53)	-0.6 ('54)
Oct	11.5	7.9	10.3	6.4	17.2 ('55)	-3.3 ('48)
Nov	10.0	7.1	7.8	3.8	14.0 ('22)	-5.7 ('62)
Dec	5.4	1.6	6.3	2.2	12.8 ('13)	-8.2 ('61)
Year	10.3	6.2	9.5	5.1	23.4 ('91)	-8.9 ('52 & '59)

Sunshine and Rainfall (Monthly Totals)								
	Sunshine (hours/month)				Rainfall (mm/month)			
Month	2022	Mean (1931-2022)	Extreme/Month (yr)		2022	Mean (1931-2021)	Extreme/month (yr)	
			Max (yr)	Min (yr)			Max (yr)	Min (yr)
Jan	13	24.8	57.7 ('98)	8.1 ('54)	135	129.7	302.4 ('15)	29.0 ('41)
Feb	81.5	52.7	90.7 ('75)	23.2 ('83)	154.4	100.3	249.9 ('89)	10.8 ('86)
Mar	124.2	89.6	135.7 ('31)	52.9 ('80)	41.1	97.3	206.0 ('94)	19.0 ('31)
Apr	156.1	133.4	194.1 ('66)	64.2 ('44)	37.6	68.7	146.5 ('85)	2.2 ('74)
May	135.6	164.4	271.5 ('48)	74.5 ('33)	69.4	57.3	131.2 ('15)	7.4 ('08)
Jun	86.4	149.2	239.5 ('55)	80.5 ('14)	62.4	58.6	134.0 ('90)	9.5 ('82)
Jul	96.3	121.8	228.0 ('47)	75.5 ('57)	82.6	67.0	156.1 ('88)	21.0 ('55)
Aug	106.5	121.3	228.5 ('38)	74.3 ('70)	100.8	80.1	184.2 ('14)	0.7 ('47)
Sept	64.4	97.9	136.7 ('04)	63.1 ('98)	88.2	103.4	181.3 ('82)	28.0 ('31)
Oct	20.9	66.4	136.2 ('16)	40.7 ('82)	127.4	123.5	247.8 ('81)	29.2 ('46)
Nov	13.2	33.5	59.2 ('00)	10.5 ('83)	153.2	133.7	236.3 ('73)	49.2 ('68)
Dec	13	15.6	34.3 ('10)	4.0 ('82)	135	135.9	274.2 ('99)	49.0 ('33)
Year	911.1				1187.1			

Wind Speed (Knots)						
	Mean		Max hourly mean speed		Highest Gust	
	2022	1922-2022	2022	1922-2022 Speed (yr)	2022	1922-2022 Speed (yr)
Jan	20.9	17.5	38	66 ('00)	58	95 ('61)
Feb	19.7	16.5	41	56 ('57)	68	83 ('57)
Mar	16	16.2	36	51 ('96)	46	75 ('67)
Apr	12.8	13.7	29	55 ('57)	41	78 ('57)
May	13.6	12.3	28	46 ('09)	41	65 ('82)
Jun	14	11.9	35	50 ('00)	46	75 ('00)
Jul	13.6	11.2	29	39 ('64)	42	61 ('64)
Aug	12.1	11.1	32	45 ('05)	43	68 ('05)
Sept	13.2	13.5	42	59 ('68)	61	87 ('63)
Oct	16.8	15.3	34	58 ('65)	50	90 ('80)
Nov	19.3	16	38	51 ('73)	58	78 ('98)
Dec	16	16.7	43	58 ('11)	60	87 ('66)

Climatic Conditions 2022 (days)							
	Rain	Hail/ice pellets	Snow/sleet	Air frost	Thunder	Gales	Fog
Jan	30	5	6	4	0	9	0
Feb	26	12	12	8	0	10	0
Mar	17	3	3	1	1	2	1
Apr	13	1	6	5	0	0	1
May	22	0	0	0	0	0	0
Jun	17	0	0	0	0	1	2
Jul	23	0	0	0	1	0	4
Aug	22	0	0	0	0	0	1
Sept	22	0	0	0	0	2	1
Oct	25	0	0	0	0	3	2
Nov	27	0	0	0	1	9	0
Dec	29	11	16	9	3	3	0
Total	273	32	43	27	6	39	12

Rain: Precipitation 0.2mm or more recorded in the 24 hour period commencing 0900hrs GMT

Hail/ice pellets: Solid precipitation, of which the outer parts are clear ice observed at any time of day

Snow/sleet: Snow or sleet observed at any time of day

Air frost: Minimum air temperature less than 0.0°C at any time of day

Thunder: Thunder heard at any time of day

Gales: Mean wind speed greater than or equal to 39.2mph (34knots) for at least 10 minutes

Fog: Visibility less than 1000 meters

Extreme Values 2022		
Value	Date / Month	Measure
Max Temperature	19 Jul	23.0°C
Min Temperature	28 Dec	-2.3°C
Sunniest day	1 Jun	14.4 hours of sunshine
Sunniest month	May	156.1 hours of sunshine
Wettest Day	30 Sep	23.8 mm rainfall
Wettest Month	Feb	154.4 mm rainfall
Driest Month	Apr	37.6 mm rainfall
Highest Wind Gust	23 Feb	68 knots
Windiest Month	Feb	10 gale days

Source: The Met Office, Lerwick

Ozone Values (Dobson Units)							
	Monthly mean			Lowest Daily Value		Highest Daily Value	
	2021	2022	1981-2022	2021	2022	2021	2022
Jan	370	323	341	324	282	404	355
Feb	387	376	340	311	294	458	473
Mar	371	373	338	293	326	458	461
Apr	378	388	333	311	317	459	425
May	381	374	326	334	317	435	425
Jun	336	346	318	292	311	377	385
Jul	332	342	310	283	312	368	395
Aug	318	324	302	275	281	364	363
Sept	284	290	295	242	247	358	319
Oct	278	308	294	222	249	344	375
Nov	313	323	303	261	288	370	359
Dec	--	--	--	--	--	--	--
Average	341	342	318	286	293	400	394

-- December values are not available due to low elevation of the sun in mid-winter

Sources: <https://uk-air.defra.gov.uk/data/ozone-data.php>; Historical monthly mean data: The Met Office, Lerwick

5 Transport

Internal Transport Services

Inter-Island Ferries						
Route	Passengers			Vehicles – Domestic & Commercial		
	2020	2021	2022	2020	2021	2022
Bressay	123,151	162,296	172,334	53,058	63,254	65,524
Skerries	2,505	4,004	4,477	1,004	1,860	2,088
Unst/Fetlar	79,161	115,598	139,107	48,619	66,735	75,735
Whalsay	98,119	121,221	144,320	58,982	70,970	77,826
Yell	162,438	216,352	242,827	98,877	126,552	136,002
Fair Isle	13	169	234	19	33	36
Papa Stour	2,006	3,218	3,354	990	1,276	1,295
Foula	83	90	110	4	13	4
Total	467,476	622,948	706,763	261,553	330,693	358,510

Note: All ferry routes are operated by Shetland Islands Council apart from Foula, which is operated by BK Marine
Source: Shetland Islands Council, apart from Foula service which was BK Marine

Inter-Island Flights								
	1981	1991	2001	2011	2019	2020	2021	2022
Tingwall Airport Traffic								
Passengers	12,180	15,453	4,747	5,181	3,309	1,227	2,300	2,886
Aircraft Movements	2,815	2,917	2,394	1,539	1,461	1,054	1,175	1,315
Small Airfield - Passengers								
Fair Isle	841	2,048	2,030	3,316	2,273	775	1,442	1,921
Foula	1,175	n/a	1,296	1,299	1,075	450	858	1,013
Papa Stour	n/a	n/a	238	127	35	2	0	-
Skerries	271	900	840	484	-	-	-	-

Source: CAA [UK airport data | Civil Aviation Authority \(caa.co.uk\)](https://www.caa.co.uk)

Bus Services - Number of Passengers		
Bus Route	2021*	2022*
Lerwick Town Service	41,252	60,271
Lerwick to Scalloway	39,686	52,099
Lerwick to North Mainland	45,915	60,646
Lerwick to South Mainland	74,803	120,372
Lerwick to West Mainland	31,728	38,906
Central Mainland and Bressay Feeders & Shoppers	6,457	9,262
North Mainland Feeders & Shoppers	3,570	4,425
South Mainland Feeders & Shoppers	10,542	10,951
West Mainland Feeders & Shoppers	10,444	10,303
Yell Services	19,723	22,031
Unst Services	17,135	19,170
Fetlar Services	751	664
Total	302,006	409,100

*Notes: 2021 figures: impacted by COVID travel restrictions; 2022 figures: Government scheme for free bus travel for under 22s introduced 31st January 2022, COVID travel restrictions only fully lifted April 2022

Source: SIC Transport Planning

External Transport Services

Ferry

Northlink Ferries Carrying 2022				
Route	Total Passengers	Total Cars	Total Coaches	Total commercial vehicle lane meterage
Aberdeen - Kirkwall	32,871	4,942	6	141,123
Aberdeen - Lerwick	128,314	25,960	82	354,161
Kirkwall - Lerwick	18,274	3,605	41	32,482
Stromness - Scrabster	159,840	47,141	164	65,478
Total	339,299	81,648	293	593,244

Source: [NorthLink Statistics](#) | [NorthLink Ferries](#)

Air

Sumburgh Airport Traffic								
	1981	1991	2001	2011	2019	2020	2021	2022
Passengers (Terminal & Transit)	541,761	473,626	168,281	143,731	267,456	116,745	183,903	247,538
Aircraft Movements	34,188	29,168	11,165	12,228	18,056	10,839	16,699	17,715
Freight (Tonnes)	3,488	1,448	981	315	322	169	189	199

Source: Pre 2011, Highlands & Islands Airports Ltd. 2011 onwards CAA [UK airport data](#) | [Civil Aviation Authority \(caa.co.uk\)](#)

Vehicle Ownership/Schedule of Roads

Vehicles Licensed in Shetland on 31 st December									
Type/Year	1976	1981	1991	2001	2011	2019	2020	2021	2022
Private & Light Goods	5,076	7,048	8,933	10,806	13,556	14,600	14,300	14,600	15,200
Goods/Crown & Exempt*	640	801	310	251	1,481	1,700	1,700	1,800	--
Heavy Goods Vehicles	Transport Scotland changed the way it recorded goods vehicles in 2022								300
Public Transport	171	164	121	81	108	100	100	100	100
Motorcycles**	397	545	287	271	495	500	500	500	600
Other Vehicles	826	831	967	992	153	200	200	200	1,100
Total	7,110	9,389	10,618	12,401	15,793	17,100	16,800	17,200	17,300

*Goods vehicles exclude heavy goods that are exempt from tax; Crown and Exempt include vehicles in the special concessionary group; **Includes all two wheeled motor vehicles

Source: Transport Scotland - [Scottish Transport Statistics 2023](#) | [Transport Scotland](#)

Schedule of County Roads	Km	Miles
A Class Roads	223.9	139.1
B Class Roads	162.7	101.1
C Class Roads	198.4	123.3
Unclassified Roads	467.1	290.2
Total	1052.1	653.7

Source: SIC Roads Service

Lerwick Harbour

Shipping in Lerwick Harbour									
	1971	1981	1991	2001	2011	2019	2020	2021	2022
General	316	418	738	796	763	605	558	592	622
Oil Tankers	51	140	114	105	78	83	54	62	64
Oil Rig Tenders	79	1,556	888	319	571	344	199	240	228
Other Vessels	489	430	522	1,277	1,246	1,302	1,181	1,006	1,135
Yachts – Cruising		112	366	415	531	541	82	144	551
Yachts – Racing						35	0	0	39
British Fishing*	1,440	677	1,606	829	630	393	439	294	577
Local Fishing	-	-	-	-	-	1,621	1,668	1,777	1,530
Foreign Fishing	1,580	246	216	103	207	311	220	53	40
Total	3,955	3,579	4,450	3,844	4,026	5,068	4,401	4,168	4,786

*Excludes local fishing fleet

Tonnage Handled in Lerwick Harbour									
	1971	1981	1991	2001	2011	2019	2020	2021	2022
General Cargo Imports	45,760	200,077	226,715	409,088	453,272	407,090	339,362	441,353	458,504
General Cargo Exports	48,849	57,471	98,335	325,055	327,614	402,498	362,120	382,311	388,204
Oil Related Imports	342	288,999	238,684	211,681	17,903	13,647	24,417	5,962	9,476
Oil Related Exports	0	421,807	315,996	203,685	81,310	62,524	30,104	54,218	31,447
Total	94,951	968,354	879,730	1,149,509	880,099	885,759	756,003	883,844	887,631

Weight of containers excluded

Foreign Fishing Vessels in Lerwick Harbour									
	1971	1981	1991	2001	2011	2019	2020	2021	2022
Denmark	374	117	66	23	22	47	32	26	3
Faroe	242	14	19	6	0	0	5	0	0
France	16	13	18	8	9	96	54	11	9
Germany	3	1	22	8	1	3	1	1	0
Iceland	215	2	0	0	0	0	0	0	0
Ireland	0	0	20	20	60	0	7	9	7
Netherlands	12	0	7	1	1	9	0	0	0
Norway	551	96	50	30	105	0	119	4	20
Russia	60	0	1	1	0	160	0	0	0
Sweden	100	1	7	5	9	4	2	2	1
Other*	7	2	6	1	0	0	0	0	0
Total	1,580	246	216	103	207	319	220	53	40

*Includes foreign vessels from Bulgaria, Finland, Greenland and Poland

Lerwick Port Authority Revenue (£000)								
1971	1981	1991	2001	2011	2019	2020	2021	2022
49	2,100	4,576	5,762	9,064	11,653	9,487	10,008	12,016

Source: Lerwick Port Authority

Scalloway Harbour

Shipping in Scalloway Harbour (No. of Vessels)							
	1986	1991	2001	2011	2020	2021	2022
UK Commercial	11	0	61	13	160	149	127
Foreign Commercial	100	103	158	34	218	240	89
Oil-related	5	1	37	71	0	0	0
UK Fishing	163	207	68	99	55	73	50
Foreign Fishing	17	28	12	20	1	0	2
Yachts	9	33	1	5	0	0	2
Salmon Cages	0	0	87	40	22	50	2
SIC Vessels	0	0	15	6	0	0	0
Other	0	0	46	7	0	2	12
Total	305	372	485	295	456	514	284

Cargo Handling in Scalloway Harbour (Tonnes)							
	1986	1991	2001	2011	2020	2021	2022
Imports	5,037	6,351	20,405	2,937	5,187	14,017	10,260
Exports	16,120	893	25,616	19,695	8,830	8,509	9,840

Scalloway Harbour Revenue (£)						
1986/87	1991/92	2000/01	2011/12	2020/21	2021/22	2022/23
160,838	202,598	218,086	592,325	1,093,666	1,389,490	1,280,813

Source: SIC Port Operations

6 Housing

Total Domestic Properties

1976	1981	1991	2001	2011	2020	2021	2022	2023
7,287	8,612	9,156	9,877	10,674	11,366	11,432	11,492	11,567

Source: Assessor & Electoral Registration Office, Lerwick

House Sales

House Sales - Average Price (£)*						
	2001	2011	2020	2021	2022	2023
Aberdeen City	79,317	186,026	186,791	193,624	187,207	177,681
Aberdeenshire	83,822	207,204	213,303	223,194	231,667	231,160
Eilean Siar	50,815	97,405	138,026	141,295	153,359	168,810
City of Edinburgh	108,547	218,445	283,077	294,066	311,492	310,910
Glasgow City	71,147	133,032	172,001	187,378	199,411	200,842
Highland	69,675	155,279	193,849	207,835	224,004	226,708
Orkney	52,225	123,594	168,159	186,842	212,635	206,744
Shetland	61,161	120,424	161,023	175,352	194,206	194,309
Scotland	78,220	156,360	189,188	201,512	214,592	216,328

*Based on sales of residential properties where the selling price is between £20,000 and £1m

Number of House Sales						
	2001	2011	2020	2021	2022	2023
Shetland	204	302	252	301	276	230

Source: Registers for Scotland: [House price statistics - Registers of Scotland \(ros.gov.uk\)](https://ros.gov.uk)

Building Completions/Planning Applications

The following tables display information regarding homes that have been constructed (completed) and those that have been granted planning permission, as well as business and Industry planning applications approved. Data for the financial years presented has been selected to show the impact of the Covid-19 pandemic, and subsequent economic conditions, in 2020/21 and 2021/22, in relation to historic construction rates.

House Build Completions															
Building Type	2011/12			2018/19			2019/20			2020/21			2021/22		
	A	P	Total	A	P	Total	A	P	Total	A	P	Total	A	P	Total
South Mainland	0	22	22	0	9	9	0	17	17	0	2	2	12	10	22
Lerwick & Bressay	20	6	26	0	7	7	0	3	3	27	3	30	0	3	3
Central Mainland	0	12	12	16	12	28	24	14	38	0	11	11	0	7	7
West Mainland	10	3	13	0	3	3	0	5	5	0	1	1	0	3	3
North Mainland	2	14	16	0	8	8	0	12	12	0	1	1	0	9	9
North Isles	6	10	16	0	5	5	0	4	4	0	1	1	0	3	3
Total	38	67	105	16	44	60	24	55	79	27	19	46	12	35	47

A = Affordable housing (constructed by Shetland Islands Council and Hjaltland Housing Association)

P = Private housing (constructed by private sector developers or individual house builders)

Source: SIC Planning

Total Number of Housing Planning Permissions Approved					
	2013/14	2018/19	2019/20	2020/21	2021/22
South Mainland	45	25	21	14	21
Lerwick & Bressay	14	48	14	7	132
Central Mainland	25	23	87	6	19
West Mainland	6	6	11	13	2
North Mainland	16	5	20	9	5
North Isles	6	7	7	11	5
Total	112	114	160	60	184

Source: SIC Planning

All Business & Industry Planning Applications Approved					
	2013/14	2018/19	2019/20	2020/21	2021/22
Use Class 4 – Business	8	8	3	5	1
Use Class 5 – General Industry	7	8	4	0	3
Use Class 6 – Storage & Distribution	5	3	3	1	1
Total	20	19	10	6	5

Source: SIC Planning

7 Education

School Rolls & Staffing

Local Authority Nursery School Roll								
	1981	1991	2001	2011	2020	2021	2022	2023
Aith Junior High	0	0	22	12	33	26	25	16
Baltasound Junior High	0	0	15	14	18	13	13	12
Bell's Brae	0	64	44	49	58	33	40	37
Brae High	51	60	27	20	35	28	37	29
Bressay	0	0	8	4	Closed 2014			
Cunningsburgh	-	-	-	22	31	21	26	19
Dunrossness	0	33	25	25	26	19	32	29
Fair Isle	0	0	0	1	1	1	2	0
Fetlar	0	0	1	0	0	0	0	0
Foula	0	0	1	1	0	1	1	0
Happyhansel	0	0	13	14	7	9	15	8
Isles Haven	Opened 2013				34	23	22	*see below
Lerwick Pre-School	Opened 2017 but run privately until 2022						18	
Lerwick ELC	*Isles Haven and Lerwick Pre-School amalgamated in 2023 to Lerwick ELC							27
Lunnasting	Opened 2009			9	14	9	12	6
Mid Yell	0	0	16	22	8	8	15	10
Mossbank	0	23	17	12	23	12	17	16
Papa Stour	0	0	0	0	0	0	0	0
Sandwick Junior High	0	38	26	24	28	17	24	20
Scalloway	0	0	18	20	45	32	34	26
Skeld	0	0	7	7	5	3	2	2
Skerries	0	0	1	0	0	0	0	0
Sound	60	60	40	38	43	35	50	41
Tingwall	-	-	-	-	27	26	28	16
Urafirth	0	0	8	6	17	14	10	4
Whalsay Junior High	0	0	19	12	30	17	23	19
Whitiness	0	0	17	19	19	17	20	16
Total	111	278	325	331	502	364	466	353

Primary School Roll									
	1976	1981	1991	2001	2012	2020	2021	2022	2023
Aith Junior High	63	52	61	90	56	117	116	110	102
Baltasound Junior High	100	106	85	54	41	41	43	48	51
Bell's Brae	790	501	357	376	308	296	295	291	269
Brae High	68	171	139	105	102	149	153	141	137
Bressay	38	20	28	42	10	Closed 2014			
Burravoe	31	36	32	19	12	11	10	9	9
Cullivoe	23	24	18	12	24	11	10	9	7
Cunningsburgh	74	77	50	59	82	58	68	70	79
Dunrossness	152	209	146	138	100	96	95	90	85
Fair Isle	9	11	8	17	6	4	2	3	5
Fetlar	6	15	7	4	4	2	1	0	0
Foula	4	7	4	2	3	4	4	4	5
Gruting	11	9	Closed 1984						
Hamnavoe	65	107	96	63	44	85	86	76	74
Happyhansel	40	48	57	48	40	37	37	33	30
Haroldswick	33	21	25	Closed 1997					
Lunnasting	22	38	21	31	20	21	24	28	33
Mid Yell Junior High	76	65	48	49	46	39	33	30	30
Mossbank	-	136	70	73	31	42	42	45	45
Nesting	14	26	11	29	16	17	21	18	16
North Roe	16	23	20	12	7	12	14	17	16
Ollaberry	12	16	36	22	14	25	22	17	18
Olnafirth	30	46	31	28	13	Closed 2014			
Papa Stour	0	5	4	2	0	0	0	0	0
Quarff	19	23	15	12	Closed 2003				
Sandness	7	15	13	12	7	19	18	12	15
Sandwick Junior High	81	96	69	86	97	105	99	100	82
Scalloway	136	150	117	83	104	145	144	144	143
Skeld	26	36	14	18	23	13	14	9	7
Skerries	12	11	9	4	3	0	0	0	0
Sound	-	292	354	339	308	241	236	228	234
Tingwall	43	52	50	62	68	82	82	84	86
Urafirth	29	37	29	29	12	25	23	25	21
Uyeasound	27	16	9	17	Closed 2011				
Whalsay Junior High	149	146	125	98	83	94	99	94	94
Whiteness	56	87	85	89	82	78	67	63	65
Total	2,262	2,730	2,243	2,124	1,766	1,869	1,858	1,798	1,758

Secondary School Roll*									
	1976	1981	1991	2001	2011	2020	2021	2022	2023
Aith Junior High	65	61	61	83	102	88	102	107	116
Anderson High	770	915	878	820	899	937	972	1,011	989
Baltasound Junior High	58	75	33	37	26	30	29	30	26
Brae High	68	164	211	265	220	144	148	153	164
Mid Yell Junior High	58	48	44	47	37	52	49	47	42
Sandwick Junior High	87	121	144	173	169	126	123	94	82
Scalloway Junior High	129	132	179	129	Closed 2011				
Skerries Junior High	6	5	2	7	4	Closed 2014			
Whalsay Junior High	54	62	45	70	57	53	47	50	57
Total	1,295	1,583	1,597	1,631	1,514	1,430	1,470	1,492	1,476

*From 2004 figures are taken from the September school roll, prior to that figures were taken from the January school roll

Local Authority Nursery & School Staffing*								
	1971	1981	1991	2001	2012	2020	2021	2022
Nursery Teachers	**	**	**	16	16	6	8	11
Primary Teachers	91	164	140	176	156	163	160	156
Secondary Teachers	88	142	189	206	176	154	159	158
Total	179	306	329	398	348	323	327	325

*Numbers are based on full time equivalent rather than head count, and have been rounded up

** Information not available

Source: Schools, SIC

Further Education/Modern Apprenticeships

Shetland UHI was founded in August 2021, from the merger of The North Atlantic Fisheries College, Shetland College and Train Shetland. The new college is a partner of the University of Highlands and Islands.

Number of Students Enrolled				
	2019/20	2020/21	2021/22	2022/23
Full time courses	80	72	70	56
Part time courses*	1,619	1,629	1,986	1,828
Total	1,699	1,701	2,056	1,884

*Duration of part time courses range from under 10 hours to up to full time

Student Outcomes (%)						
	Full time students			Part time students		
	Completed successfully	Partial success	Withdrew	Completed successfully	Partial success	Withdrew
2019/20	71.3	11.3	17.5	93.3	2.8	3.9
2020/21	58.3	18.1	23.6	83.7	11.4	4.9
2021/22	70.0	12.9	17.1	89.6	7.2	3.2
2022/23	69.6	8.9	21.4	93.7	4.1	2.2

UHI Staffing – Number of Permanent Full-Time Teaching Staff			
2019/20	2020/21	2021/22	2022/23
18	17	37	29

Source: UHI - [About us - Performance Indicators \(uhi.ac.uk\)](https://uhi.ac.uk)

Modern Apprenticeships in Shetland					
	2018/19	2019/20	2020/21	2021/22	2022/23
New enrolments (starts)	204	225	178	171	155
Already in training	329	371	383	342	357
Achievement rate, as a % of all leavers	76%	91%	79%	81%	81.1%
Scottish average achievement rate, as % of all leavers	76%	77%	76%	72%	72.7%

Source: Skills Development Scotland - [Modern Apprenticeships statistics - Skills Development Scotland](https://www.skillsdevelopment.scot.nhs.uk)

8 Health and Social Care

Shetland has one hospital, located in Lerwick, and 10 GP surgeries throughout Shetland. There are also 4 NHS dental clinics in the islands.

Staffing

NHS Shetland Staffing												
	1986	1991	2001	2011	Dec 2016		Dec 2021		Dec 2022		Dec 2023	
					HC	WTE	HC	WTE	HC	WTE	HC	WTE
Administrative Services	43	59	73	119	162	131.4	237	193.9	219	178.8	225	182.4
Allied Health Professionals	-	-	-	-	44	36.7	55	47.2	52	44.2	54	44.4
Medical & Dental	36	42	49	24	39	34.4	70	51.1	66	46.5	72	49.9
Medical & Dental Support	-	-	-	55	54	43	53	42.7	48	38.5	49	39.4
Nursing & Midwifery	194	251	212	186	238	189.7	272	222.9	277	228.4	282	231.0
Support Services	139	147	86	131	96	77.4	97	76	92	72.1	90	67.5
Other Services*	-	-	-	-	44	39.8	72	59.5	78	66.5	79	67.7
Total**	412	499	420	515	672	552.4	851	693.3	826	675	844	682.3

*Includes Healthcare Science, Therapeutic Services and Personal & Social Care

**HC totals may not add up as staff can have a job across two job groups, so are counted once in each group but only once in the total

HC = Headcount; WTE = Whole Time Equivalent

Source: [NHS Scotland workforce | Turas Data Intelligence](#)

General Practice Staffing - Shetland						
	General Practitioners				Nurses	
	HC	Est. WTE	HC/10,000 patients	WTE/10,000 patients	HC	WTE
2019	28	25	12.4	11.1	17	17
2022	26	16	11.8	7.3	Not reported	
2023	26	17.2	11.3	7.5	40	18.0

General Practice Staffing - March 2023								
	General Practitioners						Nurses	
	GP HC	GP WTE	HC/10,000 patients	WTE/10,000 patients	Locum WTE as % of GP WTE	Practices using locum	HC	WTE
Eilean Siar	31	22.5	11.4	8.3	21%	75%	26	20.8
Highland	369	299.1	11.0	8.9	9%	76.3%	204	129.6
Orkney	42	30.1	18.9	13.5	16%	83.3%	25	17.3
Shetland	26	17.2	11.3	7.5	87%	100%	40	18.0
Scotland	4,474	3,478.4	7.5	5.9	10%	86.5%	2,437	1,702.4

HC = Headcount; WTE = Whole Time Equivalent

Source: [All official statistics publications | Turas Data Intelligence \(nhs.scot\)](#) - General Practice Workforce Survey

Hospital Activity

Gilbert Bain Hospital (Board of Treatment - NHS Shetland)						
	2012/13	2018/19	2019/20	2020/21	2021/22	2022/23*
Inpatients						
Day Cases	2,071	2,632	2,467	1,325	1,979	2,135
Elective Inpatients	309	280	290	195	305	200
Emergency Inpatients	2,259	1,956	1,859	1,646	1,755	1,833
Transfers	90	221	257	310	245	275
All Inpatient Episodes	4,729	5,089	4,873	3,475	4,285	4,444
Outpatients						
All Outpatient attendances	15,407	13,177	14,177	10,648	13,179	13,005

*Provisional Figures

Source: [Publications and data - Hospital care - Primary and secondary care - Our areas of work - Public Health Scotland](#)

Social Care

Services are provided by the SIC Social Care Service, except where stated							
	1984/5	1990/1	2001/2	2011/2	2020/1	2021/2	2022/3
Local Authority beds for older people	44	54	56	130	131	131	131
Voluntary Sector beds for older people*	56	56	86	16	16	16	16
Day care places for older people**	-	-	26	95	98	98	98
Shetland Welfare Trust day care places for older people	25	25	66	-	-	-	-
Day care places for adults with learning disabilities	-	-	-	-	77	77	77
Places in hostel for adults with learning disabilities	6	16	5	9	-	-	-
Supported living for adults with learning disabilities	-	-	20	32	39	39	40
Places in Children & Young Peoples Residential Services	10	10	5	8	10	12	12
Places for mentally/physically disabled children – respite care	0	0	6	6	5	5	5
Meals delivered	45,107	54,800	40,585	38,116	22,651	25,334	27,794
Care at home – clients receiving domestic tasks	584	576	573	301	222	261	283
Care at home – clients receiving personal care***				264	343	398	384
Homes connected to community alarm system	0	482	731	677	651	693	698

*Voluntary sector beds: 16 are provided by Church of Scotland, and the remainder up to 2011/12 were provided by The Shetland Welfare Trust

**The Church of Scotland provide 10 of the day care places for older people

***Data from 2011 onwards - Food preparation classed as personal care by Scottish Government

9 Recreation

Leisure Activities

Shetland.org has a range of information on outdoor: [Outdoors and adventure | Shetland.org](https://www.shetland.org/outdoors-and-adventure), and indoor: [Leisure and things to do | Shetland.org](https://www.shetland.org/leisure-and-things-to-do), facilities/activities throughout the isles, as well as heritage sites: [History and heritage | Shetland.org](https://www.shetland.org/history-and-heritage).

Leisure Centre & Swimming Pool Admissions*

Facility	2022/3
Clickimin Leisure Complex	207,615
North Mainland Leisure Centre	24,540
Scalloway Pool	17,808
South Mainland Pool	13,829
Unst Leisure Centre	11,757
West Mainland Leisure Centre	27,672
Whalsay Leisure Centre	20,545
Yell Leisure Centre	8,318
Total Admissions	332,084

*Admission figures do not include spectators or school PE activity

Admission data collection changed in April 2022, therefore comparable historic data is not available

Source: Shetland Recreational Trust

Community Halls & Centres

There is a network of community halls and centres located throughout the isles which act as hubs for local communities and are host to a wide range of activities through the year. In addition to the list below, there are also a number of clubs, church halls and other buildings used by local communities.

Lerwick & Bressay	West Mainland	North & Outer Isles	Central Mainland
Bressay Hall	Aith Hall	Fetlar Hall	Bridge End Hall - Burra
Islesburgh Community Centre	Bixter Hall	Skerries Hall	Hamnavoe Hall - Burra
Lerwick Town Hall	Gruting Community Centre	Baltasound Hall - Unst	Scalloway Hall
North Staney Hill Hall	Sandness Hall	Haroldswick Hall - Unst	Whiteness & Wiesdale Hall
Sound Hall	Skeld Hall	Uyeasound Hall - Unst	Tingwall Hall
	Walls Hall	Isbister Hall - Whalsay	
North Mainland		Symbister Hall - Whalsay	Outdoor Education Centres
Brae Hall	South Mainland	Burravoe Hall - Yell	Bridge End - Burra
Eshaness Community Centre	Bigton Hall	Cullivoe Hall - Yell	Voxter - Brae
Hillswick Hall	Boddam Hall	East Yell Hall - Yell	
Lunnasting Hall	Carnegie Hall	Mid Yell Hall - Yell	Youth Centres
Mossbank Hall	Cunningsburgh Hall	Sellafirth Hall - Yell	Brae
Muckle Roe Hall	Fair Isle Hall	North Ness Hall - Yell	Cunningsburgh Village Club
North Nesting Hall	Gulberwick Hall	West Sandwick Hall - Yell	Germatwatt - Walls
North Roe & Lochend Hall	Levenwick Hall		Livister - Whalsay
Ollaberry Hall	Quarff Hall		Sandvien - Lerwick
Olnafirth Hall			Sandwick
South Nesting Hall			Scalloway
Sullom & Gunnister Hall			Unst

Source: Community Planning & Development, SIC

10 Services

Fire Service

There are 14 retained fire stations located in Shetland, 2 multi-pump stations in Lerwick and Brae and 12 single pump stations in Bixter, Bressay, Fair Isle, Fetlar, Hillswick, Yell, Sandwick, Scalloway, Sumburgh, Unst, Walls and Whalsay. Source: [sda-north-maps-and-stations v2023sep.pdf](https://sda-north-maps-and-stations.v2023sep.pdf) (external-doc-library.s3.eu-west-2.amazonaws.com)

At 31st December 2023, Fire Scotland had a core of 9 whole-time staff based in Lerwick and 114 on call staff throughout its 14 Shetland stations. As well as crewing, the whole-time staff deliver activities which support Shetland's Local Fire and Rescue plan and contribute to the wider Shetland Community Plan.

Scottish Fire & Rescue Service - Incidents Attended, Shetland						
Incident Type		2018/19	2019/20	2020/21	2021/22	2022/23
Fire - Building	Chimney Fire	13	10	14	5	7
	Derelict Building	2	1	-	-	-
	Dwelling	4	12	25	14	16
	Non Residential	5	6	5	6	2
	Other Residential	2	1	4	-	2
Fire - Outdoor	Grassland, woodland and crops	9	2	6	6	4
	Other outdoors (including land)	2	-	3	4	1
	Outdoor equipment and machinery	1	4	1	6	4
	Outdoor structures	-	3	6	2	6
	Refuse	4	4	4	2	2
Fire - Vehicle	Aircraft	1	-	-	-	-
	Boats	-	1	1	1	2
	Road Vehicle	6	3	13	5	9
Special Service	Animal Assistance	3	-	2	1	1
	Flooding / Water Rescue	-	2	3	2	3
	Hazardous Materials	-	-	-	1	3
	Humanitarian	2	3	3	3	2
	Inter-Agency	3	10	11	4	23
	Other Non-Fire	-	6	1	1	-
	Securing Scene	-	-	-	2	1
False Alarm	Due to Apparatus	105	94	100	106	97
	Good Intent	25	31	33	27	30
	Malicious	7	5	2	5	-
Total Incidents - Shetland		202	207	245	218	225

Source: Fire Scotland

Police Service

There are 3 police stations in Shetland, in Lerwick, Brae and Yell. In 2022/23 there were 512 crimes per 10,000 population, which was lower than the Scottish average.

Crimes and Offences Recorded by Police Scotland / Detection Rates - Shetland Islands											
Crime Gp	Number of crimes & offences recorded							Detection Rate (%)			
	1996/7	2001/2	2011/12	2019/20	20/21	21/22	22/23	2019/20	20/21	21/22	22/23
Gp 1	5	12	17	24	14	26	28	71	100	42	36
Gp 2	13	19	17	69	58	62	57	41	85	92	35
Gp 3	347	216	163	166	74	82	125	65	60	49	32
Gp 4	247	261	124	102	76	66	78	47	62	32	41
Gp 5	111	127	78	129	172	131	195	100	100	90	68
Gp 6	453	314	425	251	195	179	298	83	98	96	87
Gp 7	470	561	304	509	353	361	391	95	100	98	93
Total	1,646	1,510	1,128	1,250	942	907	1,172				

Gp 1 – Non sexual crimes of violence

Gp 2 – Sexual crimes

Gp 3 – Crimes of dishonesty

Gp 4 – Fire-raising/vandalism etc.

Gp 5 – Other crimes

Gp 6 – Miscellaneous offences

Gp 7 – Motor vehicle offences

Number of Crimes Per 10,000 Population														
	2006/7	2012/13	2019/20			2020/21			2021/22			2022/23		
	Gp 1-7	Gp 1-7	Gp 1-5	Gp 6	Gp 7	Gp 1-5	Gp 6	Gp 7	Gp 1-5	Gp 6	Gp 7	Gp 1-5	Gp 6	Gp 7
Abn City	2,441	1,834	494	256	280	495	220	280	537	265	235	517	241	182
Abnshire	1,648	977	256	133	230	234	102	176	245	121	232	243	125	219
Eilean Siar	1,073	634	149	109	183	194	116	177	162	135	182	227	140	169
Edinburgh	2,464	1,442	572	239	157	482	214	135	477	224	176	501	206	173
Glasgow	2,839	3,083	672	365	247	577	363	263	582	370	245	632	357	266
Highland	1,903	1,469	313	164	307	302	150	308	306	161	270	337	175	309
Orkney	777	749	152	127	222	130	82	143	130	80	177	184	92	273
Shetland	949	658	241	110	222	172	85	154	160	78	158	211	130	171
Scotland	2,006	1,537	453	237	222	415	228	212	405	234	208	423	222	200

Source: [How we are performing - Police Scotland](#)

Water and Wastewater Services

Water Supplied - Megalitres (1 Megalitre = 1,000,000 litres)									
	1976	1981	1991	2001	2012	2019	2020	2021	2022
Total supplied	2,627	4,964	4,691	4,104	3,914	4,309	4,151	4,395	4,133
Av daily demand	7.19	13.60	12.85	11.24	10.72	11.81	11.37	12.04	11.32

Microbiological Quality at Water Treatment Works						
	1991	2001	2012	2020	2021	2022
Percentage compliance	97.20	99.94	100	100	100	100

Networks					
		1999	2008	2012	2022
Water connections	Domestic	9,502	9,939	12,458	11,374
	Non-domestic	1,119	1,187	1,387	1,268
Sewer connections	Domestic	6,701	6,938	10,841	8,204
	Non-domestic	712	761	1,301	772
Length of water mains (km)		1,005	1,017	1,080	1,071
Length of sewers (km)		365	372	309	312

New (Replacement) Mains			
	2020	2021	2022
Water (km)	10.1	1.3	12.4
Sewer (km)	4.1 (since 2019)		

Treatment				
	1999	2002	2012	2022
Wastewater treatment plants (Inc. septic tanks)	60	64	80	81
Water treatment works	18	18	10	12

Source: Scottish Water, Lerwick

Digital Connectivity

To check broadband, 3G and 4G coverage across Shetland, follow the links below.

Broadband coverage: [View broadband availability - Ofcom Checker title](#)

3G and 4G coverage: [View mobile availability - Ofcom Checker](#)

Source: Ofcom

11 Energy

Energy Sources

Scottish and Southern Electricity Networks are the electricity system operator on Shetland. 50% of Shetland's electricity is currently supplied by the diesel-fired Lerwick Power Station, 30% by the gas-fired Sullom Voe Terminal Power Station and around 20% small independent and community based renewable generators. These renewable sources are mainly from wind power generation but also include a small but important mix of solar, tidal and micro hydro generators.

Note: The contribution by SVTPS excludes energy used within the Sullom Voe Terminal.

Source: Scottish & Southern Electricity Networks: [Shetland Energy - SSEN](#)

Since 1991, the Lerwick Energy Recovery Plant has supplied a district heating scheme in Lerwick. It supplies around 1,250 properties, including the Gilbert Bain hospital, Clickimin Leisure Complex, Lerwick Schools, libraries and other public buildings, SIC offices, businesses and domestic housing. The current installed capacity of the District Heating Scheme is 13,000KW, and the energy use of the properties currently supplied is around 40,000 MWhrs per year.

Source: Shetland Heat Energy and Power

Electricity Generation & Distribution

Electricity Generation - Shetland		
Year	Units generated (Kilowatt hours)	Maximum demand (Megawatts)
1971/2	32,319,000	11.69
1981/2	143,539,222	36.0
1991/2	170,023,850	41.2
2001/2	230,600,000	45.2
2012/3	214,185,500	44.7
2021/2	185,054,300	38.5
2022/3	173,627,000	37.7

Electricity Distribution (Km) - Shetland							
	1971	1981	1991	2001	2012	2021	2023
33,000 Volt overhead lines	24.7	98.0	128.3	167.3	175.7	172.7	172.7
33,000 Volt underground cables	0.0	3.7	11.6	10.7	12.0	23.5	23.5
11,000 Volt overhead lines	705.9	756.2	843.0	812.2	845.5	842.1	842.1
11,000 Volt underground cables	15.1	65.5	99.3	110.8	120.4	128.53	128.53
Low Voltage overhead lines	340.1	345.6	324.5	227.4	227.4	226.1	226.1
Low Voltage underground cables	18.9	65.6	122.7	219.0	242.0	264.0	264.0

Source: Scottish & Southern Electricity Networks, Lerwick Power Station

Energy Consumption

Electricity Consumption Rates - Shetland									
	No. of meters (000s)			Total consumption (GWh)			Mean consumption (kWh/meter)		
	Domestic	Non-Domestic	Total	Domestic	Non-Domestic	Total	Domestic	Non-Domestic	Mean - All meters
2005	16.3	1.8	18.1	107	102	210	6,608	55,430	11,573
2011	17.1	1.8	19.0	104	93	196	6,064	50,192	10,355
2021	17.3	1.9	19.2	95.1	82.8	177.9	5,493	43,001	9,247
2022	16.8	1.8	18.7	89.2	81.3	170.5	5,295	43,972	9,122

Mean Domestic Consumption (kWh per household)					Domestic Electricity Smart Meters Installed	
	2007	2011	2021	2022		2023 (%)
Eilean Siar	8,283	7,527	6,492	6,024	Eilean Siar	9
Highland	7,782	6,952	5,643	5,157	Highland	28
Orkney	9,515	8,591	7,493	7,045	Orkney	9
Shetland	11,349	10,401	9,012	8,385	Shetland	7
Scotland	5,186	4,692	3,737	3,374	Scotland	43
Great Britain	4,662	4,339	3,709	3,387	Great Britain	55

Sources: [Regional and local authority electricity consumption statistics - GOV.UK \(www.gov.uk\)](http://www.gov.uk)

[Smart meters in Great Britain, quarterly update March 2023 - GOV.UK \(www.gov.uk\)](http://www.gov.uk)

Total Final Energy Consumption*						
	2005		2011		2021	
	ktoe	GWh	ktoe	GWh	ktoe	GWh
Eilean Siar	55.3	643.1	50.2	583.8	50.2	583.8
Highland	648.9	7,546.7	640.6	7,450.2	600.0	6,978.0
Orkney	50.7	589.6	43.4	504.7	43.9	510.6
Shetland	56.9	661.7	48.9	568.7	47.8	555.9
Scotland	14,773.8	171,819.3	13,058.3	151,868.0	11,815.3	137,411.9
Great Britain	147,760.3	1,718,452.3	126,239.9	1,468,170.0	117,611.7	1,367,824.1

*Estimates produced from combining gas, electricity and transport consumption figures for local authority areas

ktoe = Thousands of tonnes of oil equivalent

GWh = Gigawatt Hour

Source: [Sub-national total final energy consumption data - GOV.UK \(www.gov.uk\)](http://www.gov.uk)

Carbon Dioxide Emissions from Shetland Based Energy Facilities (Tonnes)					
	2007	2011	2016	2021	2022
Lerwick Energy Recovery Plant	30,170	20,850	14,190	12,558	19,085
Lerwick Power Station	80,020	79,040	79,710	72,934	59,858
SVT Power Station	260,000*	267,720	211,740	180,810	167,947
SVT Refinery	100,450	170,130	100,310	28,970	25,528
Shetland Gas Plant	Opened 2016		235,230	127,788	122,989

*SVT Power Station figure for 2008 as no 2007 data

Source: SEPA Scottish Pollutant Release Inventory: [Scottish Pollution Release Inventory \(sepa.org.uk\)](http://sepa.org.uk)

Shetland has a number of small independent and community owned renewable generators, including wind, solar, tidal, hydro, biomass, heat pump and air source. Many are installed in domestic, public and community buildings. While there is no record of all these systems, the table below outlines the larger systems installed.

Systems Recorded on the Renewable Energy Planning Database - Shetland (Oct 2023)						
	Commercial		Community		Total	
	No	KW	No	KW	No	KW
Wind	2	6,700	1	4,500	3	11,200
Solar			1	10	1	10
Tidal	2	1,900			2	1,900
Total	4	8,600	2	4,510	6	13,110

No: Number of renewable projects

KW: Installed capacity in Kilowatts

Source: [Renewable Energy Planning Database: quarterly extract - GOV.UK \(www.gov.uk\)](https://www.gov.uk/government/statistics/renewable-energy-planning-database-quarterly-extract)

Plug-in Vehicles

Licensed Plug-in Vehicles Registered in Shetland*	2009	2011	2019	2020	2021	2022	2023
Cars - Battery electric	1	1	20	33	87	122	136
Cars - Plug in hybrid	0	0	29	34	49	58	72
Cars - Range extended electric	0	0	1	2	1	0	1
Light Goods Vehicles - Battery electric	0	1	5	5	7	17	16
Light Goods Vehicles - Plug in hybrid	0	0	0	0	1	1	1
Motorcycles - Battery electric	0	1	0	0	0	1	2
Motorcycles - Plug in hybrid	0	0	0	0	0	0	0
Total	1	3	55	74	145	199	228

* All figures to 31st December. Vehicles allocated to a local authority according to the postcode of the registered keeper. This is the keeper's address for privately owned vehicles or the company's registered address for a company owned vehicle. The address does not necessarily reflect where the vehicle is located.

Source: [Vehicle licensing statistics data tables - GOV.UK \(www.gov.uk\)](https://www.gov.uk/government/statistics/vehicle-licensing-statistics-data-tables) – Table VEH0142

Number of Public Electric Vehicle Charge Points Across Shetland			
2020/21	2021/22	2022/23	2023/24
14	16	21	26

Source: SIC

In 2020, Shetland Islands Council set up a Climate change Programme, you can find more about the work being done here: [What are we doing? – Shetland Islands Council](https://www.shetland.gov.uk/what-are-we-doing/)

12 Conservation

Built Heritage

Shetland currently has one Historic Marine Protected Area - Out Skerries Historic MPA, as well as 337 listed buildings, 392 scheduled monuments and 4 designated gardens and landscapes, detailed below.

	Listed Buildings				Scheduled Monuments	Gardens & Landscapes
	Category A	Category B	Category C	Total		
Bressay	1	10	3	14	8	1
Delting	0	10	4	14	20	
Dunrossness	3	17	9	29	69	
Fetlar	1	2	4	7	13	1
Lerwick	3	56	46	105	16	
Lerwick Landward	0	1	1	2	-	
Nesting	0	14	8	22	46	1
Northmavine	0	10	8	18	38	
Sandsting & Aithsting	1	7	6	14	40	
Tingwall	2	7	29	38	25	
Unst	2	9	11	22	51	1
Walls & Sandness	1	12	10	23	52	
Yell	1	10	18	29	14	
Total	15	165	157	337	392	4

Source: Historic Environment Scotland [Search \(historicenvironment.scot\)](http://www.historicenvironment.scot)

Sites & Monuments Record			
The current number of records in the Historic Environment Record is: 9,945			
Broch	146	Longhouse	109
Burnt Mound	365	Military Remains	1065
Chambered cairn	149	Souterrain	28
Fishing Station	43	Wheelhouse	13

Source: Shetland Amenity Trust

Nature Conservation

Statutory Conservation Sites in Shetland		
2 National Nature Reserves (NNR):	Hermaness (Seabird colony)	980.3ha
	Noss (Seabird colony)	313.0ha
78 Sites of Special Scientific Interest (SSSI):		
Geology: 33 sites	Marsh & Meadow: 7 sites	Rare Plants: 9 sites
Geomorphology: 7 sites	Limestone Grassland: 1 site	Seabirds: 18 sites
Montane Habitats: 1 site	Sand Dune Flora: 3 sites	Moorland Birds: 15 sites
Serpentine Vegetation: 4 sites	Trees & Woodland: 3 sites	Wildfowl: 2 sites
Other Heathland: 5 sites	Intertidal Habitats: 5 sites	Cliff Vegetation: 2 sites
Peatland: 5 sites	Aquatic Flora & Fauna: 8 sites	Mammals: 4 sites
Note: Some sites are notified for more than one feature of interest		
12 Special Protection Areas, covering 17 of the ornithological SSSIs, have been designated under EC Birds Directive		
3 Special Protected Areas in Marine Environment and 2 Nature Conservation Marine Protected Areas		
A further 12 sites comprising 11 SSSIs and 1 non-SSSI area have been designated as Special Areas of Conservation under the EC Habitats Directive		

Source: NatureScot: <https://sitelink.nature.scot/>

Shetland is also a designated UNESCO Global Geopark: [SHETLAND UNESCO GLOBAL GEOPARK \(United Kingdom of Great Britain and Northern Ireland\)](#)

Total area covered by statutory conservation sites is 19,843 Hectares, which represents 13.5% of the total area of Shetland.			
Approximate area coverage:			
Foula: 2 sites	100%	Noss: 1 site	100%
Papa Stour: 1 site	79%	Fetlar: 6 sites	70%
Fair Isle: 1 site	66%	Unst: 15 sites	21%
Mainland & Uninhabited Islands: 43 sites (1 shared with Yell)	9%	Yell: 8 sites (1 shared with Mainland)	4%
Muckle Roe: 1 site	0.1%		

Source: NatureScot

Wildlife

Latest Population Estimates for Selected Species*		
Species	Est. Population	Est. Proportion of UK population
Red-Necked Phalarope	79 pairs	80-90%
Whimbrel (Tang Whaup)	364 Pairs	95%
Great Skua (Bonxie)	1,020 - 1,360 Pairs	70%
Arctic Skua (Scootie Alan)	295 Pairs	41%
Red-Throated Diver (Raingoose)	400 Pairs	40%
Arctic Tern (Tirrick)	7,164 Pairs	22%
Fulmar (Maalie)	151,790 Pairs	43%
Black Guillemot (Tystie)	12,295 Adults	31%
Shag (Skarf)	3,060 Pairs	12%
Puffin (Tammie Norrie)	30,334 Pairs	10%
Gannet (Solan)	34,900 - 36,600 Pairs	12%
Grey Seal (Selkie)	3,000 – 3,500 Adults	2%
Otter (Dratsie)**	500-1,000 Individuals	5-10%
Common Seal (Selkie)	3,200 Adults	8%

*Figures based on the latest breeding estimates available, and are rough estimates of the proportion of UK population. Recent events such as Highly Pathogenic Avian Influenza (Bird Flu) is likely to have negatively impacted all seabird figures. The estimated Great Skua and Gannet populations reflect the impact of Bird Flu on these species.

**There has not been a Shetland wide otter survey for many years, this figure is a very rough estimate

Sources: RSPB & NatureScot

13 Politics & Local Government

2019 General Election Results in the Orkney and Shetland UK Parliamentary Constituency

Percentage Turnout: 67.93%

Candidate Elected: Alistair Carmichael

Source: [UK Parliamentary Election 2019 – Shetland Islands Council](#)

2021 Scottish Parliamentary Election Results in the Shetland Constituency

Percentage Turnout: 66.0%

Candidate Elected: Beatrice Wishart

Source: [Scottish Parliamentary Election 2021 – Shetland Islands Council](#)

Shetland Islands Council Members/Wards 2022-2027

Ward 1 - North Isles Turnout: Uncontested seat Candidates Elected: Duncan Simpson Ryan James Andrew Thomson By-election to fill vacant North Isles seat 04/08/2022: Turnout: 46.2% Candidate Elected: Robert William Thomson	Ward 5 - Lerwick North & Bressay Turnout: 39.0% Candidates Elected: Stephen Leask Gary Robinson Arwed Wenger
Ward 2 - Shetland North Turnout: Uncontested seat Candidates Elected: Tom Morton Emma Louise MacDonald Andrea Isabel Manson	Ward 6 - Lerwick South Turnout: 44.8% Candidates Elected: John Finlay Sinclair Fraser Dennis Leask Neil Pearson Cecil Laing Smith
Ward 3 - Shetland West Turnout: 56.5% Candidates Elected: Liz Boxwell John Robert Leask – Resigned 29/08/2022 By-election to fill vacant seat 17/11/2022: Turnout: 37% Candidate Elected: Mark Robinson	Ward 7 - Shetland South Turnout: 55.4% Candidates Elected: Alex Armitage Allison Duncan Robbie McGregor Bryan Peterson
Ward 4 - Shetland Central Turnout: 44.9% Candidates Elected: Catherine Hughson Moraig Lyall Davie Sandison Ian Scott	Further information on all elected members: Councillors – Shetland Islands Council Maps detailing electoral wards: SIC Ward Maps [May 2022] – Shetland Islands Council

Source: [Local Council Elections 2022 – Shetland Islands Council](#)

Shetland Islands Council Structure/Departments

Management Structure: [About Your Council – Shetland Islands Council](#)

Contact information: [Contact us – Shetland Islands Council](#)

Community Councils

There are 18 community councils in Shetland, with a total of 163 seats. The most recent elections took place in October 2022, with no seats contested and 77% of seats filled. The next election will take place October 2024.

Shetland Community Council Seats as at 24 th November 2022							
Community Council	Total seats	Quorum	Vacancies	Community Council	Total seats	Quorum	Vacancies
Bressay	8	3	0	Sandness & Walls	10	4	0
Burra & Trondra	8	3	2	Sandsting & Aithsting	8	3	0
Delting	12	4	6	Sandwick	8	3	0
Dunrossness	12	4	4	Scalloway	9	3	5
Fetlar	6	3	0	Skerries	5	3	0
Gulberwick, Quarff & Cunningsburgh	10	4	4	Tingwall, Whiteness & Weisdale	9	3	2
Lerwick	16	6	5	Unst	9	3	0*
Nesting & Lunnasting	8	3	0	Whalsay	7	3	3
Northmavine	9	3	2	Yell	9	3	5

Source: [notice-of-uncontested-elections-2022 \(shetland.gov.uk\)](https://www.shetland.gov.uk/news/notice-of-uncontested-elections-2022)

Shetland Islands Council Finance

Shetland Islands Council Service and General Fund Expenditure:	2018/19 £'000	2019/20 £'000	2020/21 £'000	2021/22 £'000	2022/23 £'000
Corporate & Executive Services	13,420	12,394	12,189	13,601	14,389
Development Services	17,869	16,186	11,909	12,188	16,646
Children's Services	42,887	45,190	45,779	48,735	57,014
Community Health & Social Care	20,064	20,289	21,960	21,648	27,494
Infrastructure Services	21,622	25,989	25,252	22,134	33,846
Total Services Net Expenditure	115,862	120,048	117,089	118,306	149,389
Cost Pressures & Contingency	0	(165)	0	(2)	24
Covid-19	0	0	2,039	3,544	914
Crown Estate Unallocated	0	(1,009)	(1,360)	(1,572)	(1,608)
Economic Development Investment Income (net)	(1,316)	(1,343)	(910)	(1,139)	(864)
Financing Costs	1,438	1,385	1,354	1,352	1,375
Fund Manager Fees	848	1,007	1,142	1,596	1,503
Interest in Revenue Balances	(28)	(53)	(4)	(14)	(299)
Other Unallocated Funds	0	0	0	(125)	0
Recharges to Other Funds	(2,725)	(4,354)	(3,459)	(3,854)	(4,090)
Total Net General Fund Expenditure	114,079	115,516	115,891	118,092	146,344
	2018/19 £'000	2019/20 £'000	2020/21 £'000	2021/22 £'000	2022/23 £'000
Financed by:					
Grant Funding (incl. Specific grants)	(56,727)	(55,412)	(73,776)	(61,795)	(68,227)
NNDR	(23,853)	(25,925)	(17,182)	(26,690)	(35,155)
Council Tax	(9,372)	(9,643)	(10,106)	(10,285)	(10,254)
Draws on Reserves (Sustainable)	(19,406)	(21,881)	(14,562)	(20,725)	(28,803)
Draws on Reserves (Unsustainable)	(4,375)	(2,518)	0	0	(4,135)
Other Specific Reserves	(346)	(137)	(265)	1,403	230
Total Funding	(114,079)	(115,516)	(115,891)	(118,092)	(146,344)

Source: SIC Finance

Note: Information has been extracted from Draft Outturn report presented annually to SIC Committee

Details of SIC Council Tax charges and bands: [Council Tax – Shetland Islands Council](https://www.shetland.gov.uk/council-tax)

14 The Shetland Partnership

The Shetland Partnership is made up of a wide range of partners and community bodies who work together to develop and deliver Shetland's Partnership Plan, which identifies a shared vision and priorities for everyone to work towards to improve the lives of everyone in Shetland.

The Shetland Partnership's shared vision is:

"Shetland is a place where everyone is able to thrive; living well in strong, resilient communities; and where people and communities are able to help plan and deliver solutions to future challenge"

A range of data is gathered in relation to this plan, which can be found online:

Shetland Partnership Plan annual reports	Annual Reports – Shetland Partnership
Shetland Partnership Plan Latest data on indicators	Indicators – Shetland Partnership
Shetland Partnership Locality Profiles	Locality Profiles – Shetland Partnership
NHS Shetland Population Health Survey (Nov21-Aug22)	Population Health Survey – Healthy Shetland