

Shetland in Statistics



Published by
Shetland Islands Council
Economic Development Unit
Green Head, Lerwick, Shetland, ZE1 0PY

© 2005 Economic Development Unit, Shetland Islands Council
32nd Edition

Printed by Shetland Litho, Gremista, Lerwick

ISBN 0 904562 80 8

Whilst every care is taken in the production of this publication, neither the publisher nor the printer can accept any responsibility for any errors or omissions therein.

Cover photograph: Gold medal winning runner Michelle Sandison in the 2005 Island Games.
Photo: Garry Sandison

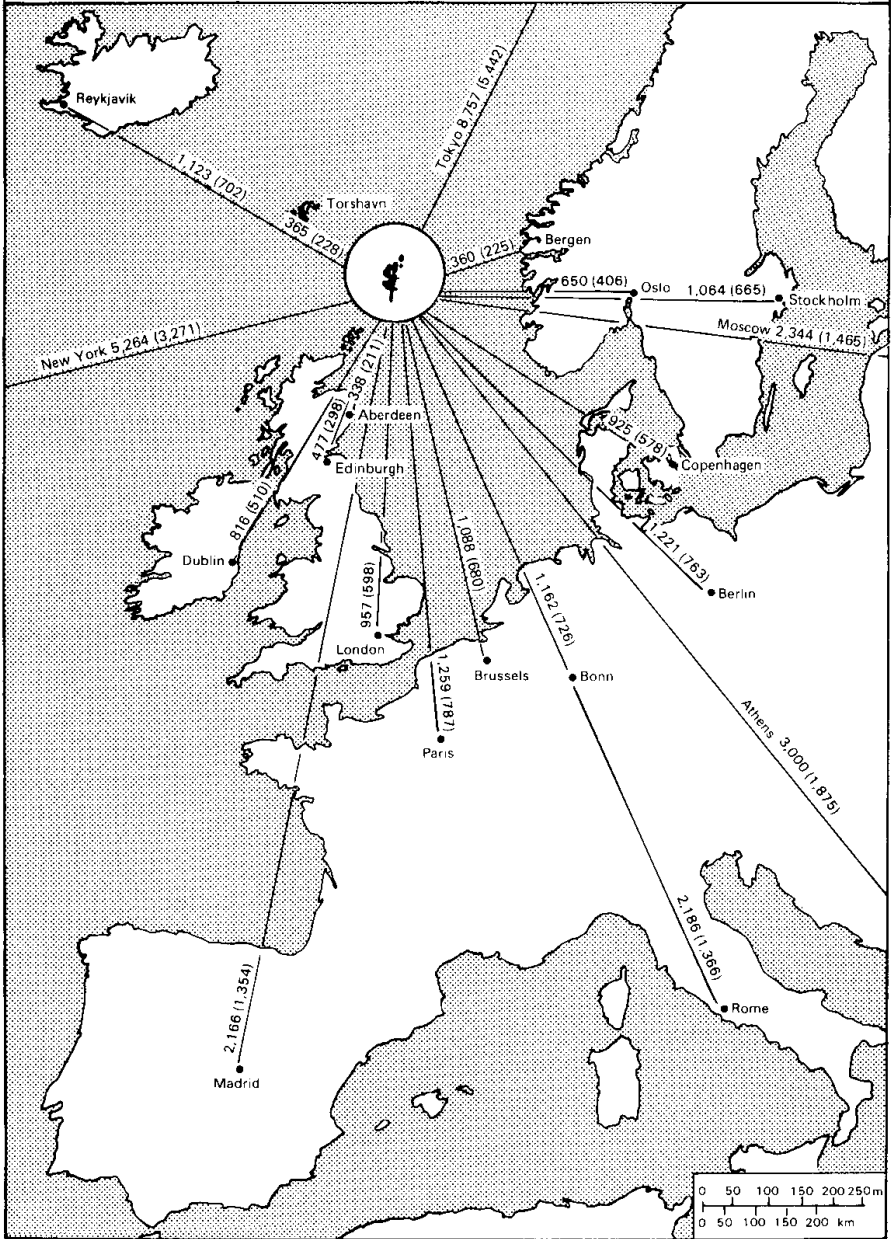
Contents

Physical:	Location	3
	Physical Characteristics	4
	Weather	5-9
	Population	10-12
Economy:	Economic Performance	13
	Employment	14-15
	Fisheries	16-19
	Fish Processing	20
	Aquaculture	21
	Agriculture	22-24
	Knitwear	25
	Crafts	26
	Tourism	27-29
	Oil	30-34
	Cost of Living	35
Transport:	Internal Transport	38-40
	Vehicle Ownership	40
	External Ferries	41
	Lerwick Harbour	42-43
	Scalloway Harbour	43
	Air Services	44-47
Education and Services:	Education and Training	48-50
	Social Work Provision	50
	Health	51
	Housing	51
	Leisure Facilities	52
	Shetland Community Directory	52
	Crime	53
	Coastguard Services	54
	Fire Service	55
	Postal Services	55-56
	Energy	56
	Renewable Energy	56
	Water and Wastewater Services	57
Conservation:	Built Heritage	58-59
	Archaeology	59
	Nature Conservation	60-61
Politics and Local Government:	Electoral Statistics	62
	Electoral Divisions	63
	Shetland Islands Council Members	64-65
	Shetland Islands Council Departments	65
	Shetland Islands Council Finance	66
	Rating and Valuation	67
	Community Councils	68
Culture and Media	69
Shetland Interest Publications	70-71
Map of Lerwick	36-37
Conversion Factors	72

Shetland: Location

Lerwick is Lat 60°09' N
Lon 01°09' W

Approximate distances from Shetland
in kilometres (statute miles)



Shetland: Physical Characteristics

Distance by road in kilometres (miles) from Lerwick:

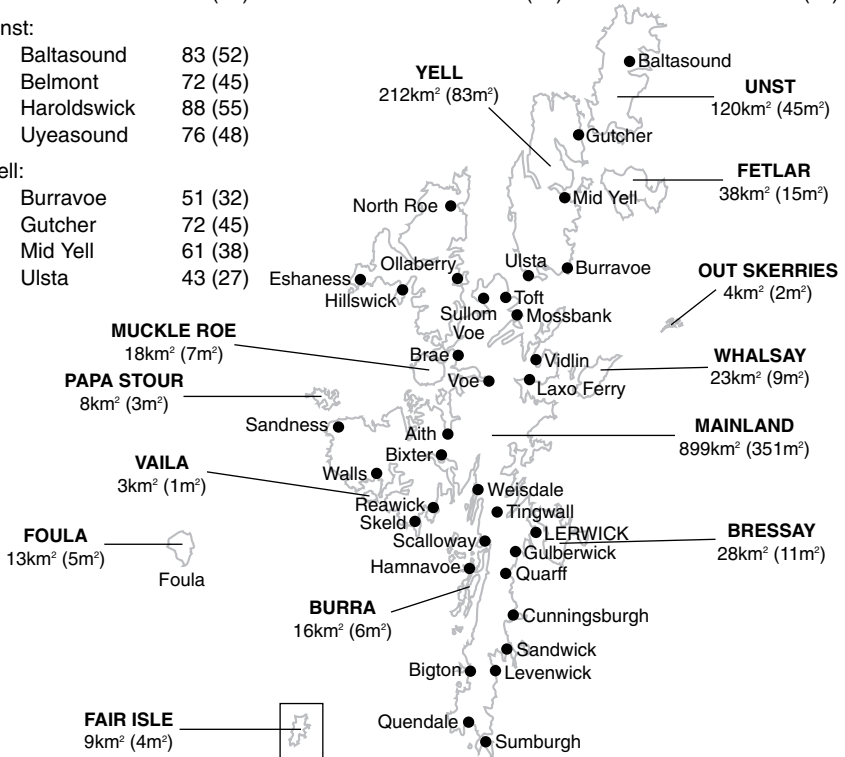
Aith	34 (21)	Laxo Ferry	35 (22)	Scalloway	13 (8)
Bigton	30 (19)	Levenwick	28 (18)	Skeld	40 (25)
Bixter	27 (17)	Mossbank	43 (27)	Sullom Voe	46 (29)
Brae	35 (22)	North Roe	61 (38)	Sumburgh	40 (25)
Cunningsburgh	18 (11)	Ollaberry	53 (33)	Tingwall	10 (6)
Eshaness	62 (39)	Quarff	11 (7)	Toft Ferry	43 (27)
Girlsta	16 (10)	Quendale	38 (24)	Vidlin	38 (24)
Gulberwick	6 (4)	Reawick	38 (24)	Voe	29 (18)
Hamnavoe, Burra	16 (10)	Sandness	46 (29)	Walls	40 (25)
Hillswick	56 (35)	Sandwick	24 (15)	Weisdale	17 (11)

Unst:

Baltasound	83 (52)
Belmont	72 (45)
Haroldswick	88 (55)
Uyeasound	76 (48)

Yell:

Burravoe	51 (32)
Gutcher	72 (45)
Mid Yell	61 (38)
Ulsta	43 (27)



Total Area of Shetland: 1,468 square kilometres (567 square miles)*

Total Length of coastline: approx 1,450 kilometres (900 miles)**

* Ordnance Survey, 1988

** Prof D Flinn, 1975 estimate

Number of islands: 100+

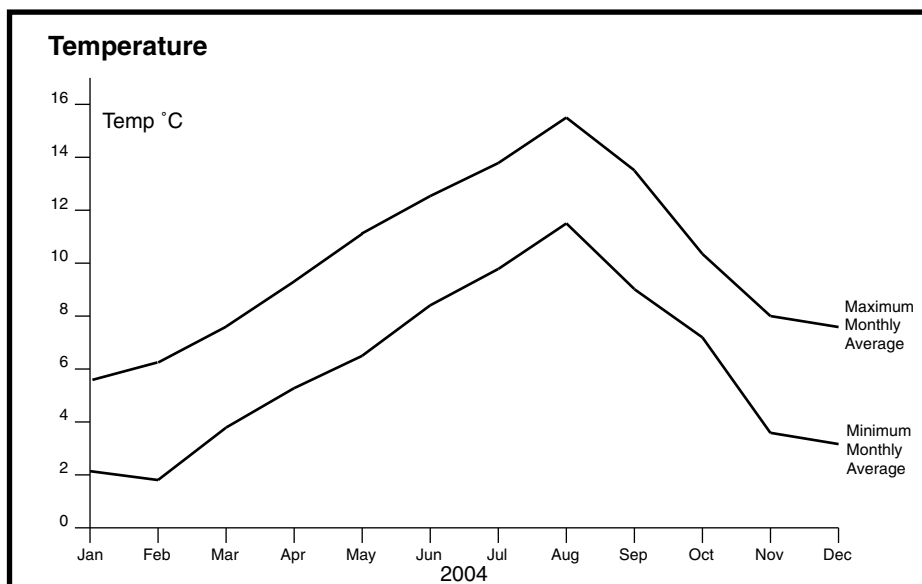
Number of inhabited islands: 15

Weather

Observations are recorded in Shetland by staff employed by the Meteorological Office in Lerwick. There are also official Auxiliary Synoptic Reporting Stations in Fair Isle and Foula. Observations from the Lerwick Observatory began in 1921, although the first full year of recordings was not until 1922. (Lerwick Observatory: 60°08'N, 01°11'W. Wind vane 93m above sea level). The recorded meteorological observations from Lerwick Observatory for 2004 are as follows:

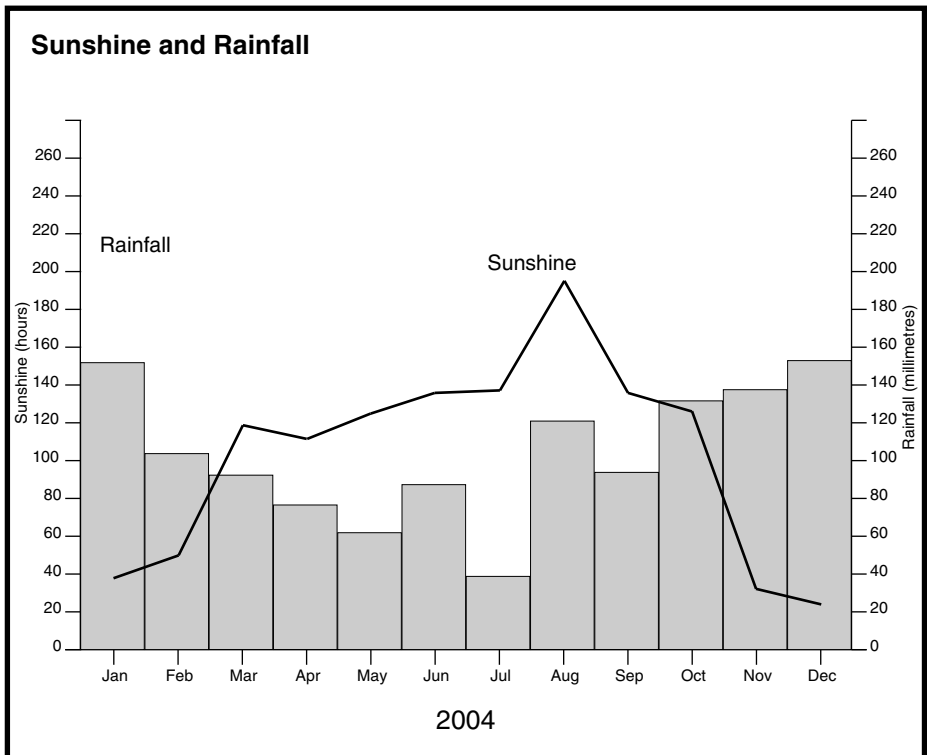
Temperature (°C)

Month	2004 Monthly Average		Mean (1971-2000)		Extreme Daily Values (1922-1998)	
	Max	Min	Max	Min	Max (Year)	Min (Year)
Jan	5.7	2.1	5.6	1.5	11.7 ('32,'50,'98)	-8.9 ('52,'59)
Feb	6.1	1.9	5.4	1.4	11.7 ('45)	-7.3 ('80)
Mar	7.7	3.5	6.3	1.9	13.3 ('61)	-8.3 ('47)
Apr	9.4	5.3	7.7	2.9	16.1 ('42)	-5.7 ('68)
May	11.1	6.5	10.2	5.2	20.7 ('92)	-2.8 ('23)
Jun	12.6	8.4	12.2	7.4	23.3 ('58)	-0.6 ('24,'29,'31,'51)
Jul	13.8	9.8	13.9	9.4	23.4 ('91)	3.3 ('21)
Aug	15.6	11.6	14.9	9.8	21.5 ('82)	1.7 ('21)
Sep	13.5	9.0	12.4	8.2	19.4 ('53)	-0.6 ('54)
Oct	10.4	7.3	10.1	6.2	17.2 ('55)	-3.3 ('48)
Nov	8.0	3.7	7.6	3.5	13.9 ('46)	-5.7 ('62)
Dec	7.7	3.3	6.2	2.0	12.2 ('48)	-8.3 ('61)
Year	10.1	6.0	9.4	5.0		



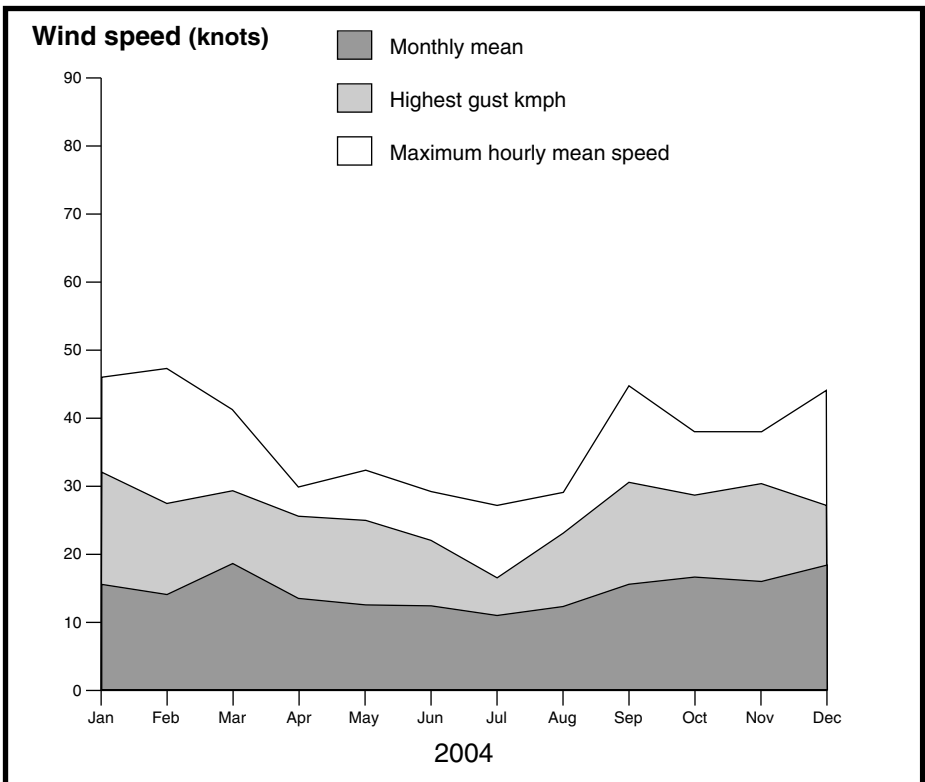
Sunshine and Rainfall (Monthly Totals)

	Sunshine (hours)			Rainfall (millimetres)		
	2004	Mean (1971-2000)	Extreme daily values (1922-1999)	2004	Mean (1971-2000)	Extreme daily values (1922-1999)
Jan	38.2	22.6	7 ('39)	152.1	135.4	43 ('37)
Feb	46.9	51.8	10 ('40)	104.2	107.8	47 ('51)
Mar	119.2	85.6	12 ('64)	92.6	122.3	47 ('52)
Apr	111.8	129.9	15 ('26)	77.0	74.2	37 ('40)
May	125.2	168.3	16 ('40,'57,'80)	61.6	53.5	50 ('66)
Jun	136.5	148.2	17 ('34)	87.2	58.6	37 ('81)
Jul	137.1	120.0	17 ('35)	38.8	58.5	94 ('35)
Aug	194.9	124.6	15 ('38)	121.2	78.3	47 ('45,'94)
Sep	136.7	100.8	13 ('24)	94.4	115.3	51 ('54)
Oct	126.4	65.4	10 ('37)	131.9	62.3	61 ('81)
Nov	32.5	33.0	7 ('61,'67)	138.3	152.4	71 ('49)
Dec	23.8	14.9	6 ('57)	153.2	150.0	68 ('95)
Year	1,229.2	1,065.1		1,252.5	1,168.6	



Wind Speed (knots)

	Monthly mean 2004	Maximum hourly mean speed 2004	Speed Year (1922-1999)	Highest gust Speed Year (1922-1999)
Jan	15.1	46	73.7 ('53,'61)	32.7 109.4 ('60,'92)
Feb	14.6	47	64.5 ('57,'81)	28.4 95.6 ('43,'57)
Mar	15.7	41	61.0 ('67)	28.8 88.7 ('67)
Apr	13.9	30	63.3 ('57)	25.4 89.8 ('57)
May	13.4	32	50.7 ('82)	25.2 74.9 ('82)
Jun	12.4	29	48.4 ('55)	21.9 70.2 ('55)
Jul	11.0	27	46.1 ('40)	16.9 70.2 ('64)
Aug	12.5	29	56.4 ('23)	23.8 79.4 ('23)
Sep	15.3	45	67.9 ('78)	30.5 100.2 ('63)
Oct	16.0	38	66.8 ('65)	28.4 103.6 ('80)
Nov	15.5	38	58.7 ('38,'73)	30.4 92.1 ('36,'38)
Dec	18.5	44	66.8 ('49)	27.7 103.6 ('56)



Climatic Conditions 2004 (days)

	Rain	Hail or Ice Pellets	Snow or Sleet	Air Frost	Thunder	Gales	Fog
Jan	28	3	9	5	0	6	0
Feb	20	3	12	13	1	5	1
Mar	22	3	0	1	0	2	0
Apr	23	0	0	0	0	0	0
May	22	1	0	0	0	0	1
Jun	19	0	0	0	0	0	2
Jul	21	0	0	0	0	0	5
Aug	13	0	0	0	1	0	4
Sep	22	1	0	0	0	4	2
Oct	28	1	0	0	0	2	1
Nov	27	6	8	6	1	3	0
Dec	30	4	8	6	0	10	0
Total	275	22	37	31	3	32	16

Rain: precipitation 0.2 mm or more recorded in the 24 hour period commencing 09.00 hours GMT.

Hail or Ice Pellets: solid precipitation, of which the outer parts are clear ice observed at any time of day.

Snow or Sleet: snow or sleet observed at any time of day.

Air Frost: minimum air temperature less than 0.0 °C at any time of day.

Thunder: thunder heard at any time of day.

Gales: mean wind speed greater than or equal to 39.2 mph (34 knots) for at least 10 minutes.

Fog: visibility less than 1000 metres at 09.00 hours GMT.

Source: The Met Office, Glasgow

Extreme Values 2004

Temperature (°C)

Maximum	10 August	21.2°C
Minimum	28 January	-5.3°C

Sunshine (hours)

Sunniest Day	9 August	14.2 hours
Sunniest Month	August	186.8 hours

Rainfall (millimetres)

Wettest Day	18 August	63.6 mm
Wettest Month	February	179.4 mm
Driest Month	July	38.8 mm

Wind Speed (mph)

Highest Gust	3rd February	81.8 mph
Windiest Month	December	10 gale days

Source: The Met Office, Lerwick

Ozone

Lerwick is one of only two stations in the UK where measurements of ozone are made, the other being Camborne in Cornwall. These stations are part of the Met Office's UK Upper Air Observing Network. Ground based Dobson Spectrophotometers are used daily to measure total ozone, the largest part of which exists in the stratospheric ozone layer (at a height of 8-30 km). At Lerwick ozone concentration profiles are also measured using balloon borne ozonesondes.

Total ozone levels are at their peak in the late winter and early spring. However, it is also at this time when man-made substances can lead to enhanced ozone depletion in the stratosphere. It is difficult to quantify these losses precisely since levels vary naturally by large amounts.

Stratospheric ozone acts as a shield by absorbing potentially harmful ultraviolet (UV) radiation which would otherwise reach the earth's surface. (It should not be confused with tropospheric ozone. Part of this is a pollutant formed in the lower atmosphere (troposphere) by the action of sunlight on other compounds such as those from car exhausts.)

High quality measurements over the last 20 years suggest a long term rate of decrease in total ozone over the UK of between 5-6% per decade. This is consistent with findings for other stations at similar latitudes in the northern hemisphere.

Ozone Values (Dobson Units)

	Monthly Mean		Monthly Mean (1981-1998)	Lowest Daily Value		Highest Daily Value	
	2003	2004		2003	2004	2003	2004
Jan	406	358	330.4	339	319	487	417
Feb	348	361	358.5	270	312	409	441
Mar	351	381	383.3	277	327	434	480
Apr	380	371	387.9	316	321	446	432
May**	397	—	376.1	344	—	454	—
Jun	365	366	358.5	303	325	401	443
Jul	332	344	341.2	299	282	363	375
Aug	302	311	322.1	269	272	332	355
Sep	288	287	299.4	250	224	326	326
Oct	276	269	286.8	228	189	323	318
Nov	313	271	279.3	254	219	358	336
Dec*	—	—	—	—	—	—	—

* December values are not available due to low elevation of the sun in mid-winter.

** Values for May 2004 are unavailable as the spectrophotometer used to make the measurements was taken to an international exercise.

Source: Department of the Environment, Food & Rural Affairs (DEFRA).

Population

After decades of decline the population of Shetland, which had fallen to nearly 17,000 in the mid-1960s, rose by 35% between 1971 and 1981 as a direct result of oil related activity. In the early 1980s the population fell due to out migration after the end of oil construction activity and difficulties at Sumburgh Airport. In the latter half of the 1980s and the early 1990s the population level became fairly stable. However, the 2001 Census recorded a significant decrease in population, and the mid-year estimates for 2003 continued the downward trend. The 2004 mid-year estimates have shown a slight reverse in this trend, with the population up by 70 on the 2003 mid-year estimates.

Population Breakdown by Age and Sex

Age group	1971			1981			1991			2004		
	M	F	Total	M	F	Total	M	F	Total	M	F	Total
0-4	710	680	1,390	888	890	1,778	830	797	1,627	662	591	1,253
5-9	715	680	1,395	901	881	1,782	815	743	1,558	684	692	1,376
10-14	620	595	1,215	959	913	1,872	903	837	1,740	835	800	1,635
15-19	585	550	1,135	907	846	1,753	831	790	1,621	750	641	1,391
20-24	610	515	1,125	886	791	1,677	838	757	1,595	566	454	1,020
25-29	565	530	1,095	1,006	852	1,858	883	785	1,668	660	607	1,267
30-34	505	470	975	1,052	874	1,926	857	792	1,649	740	744	1,484
35-39	485	465	950	857	782	1,639	917	795	1,712	819	811	1,630
40-44	475	445	920	706	577	1,283	933	787	1,720	910	861	1,771
45-49	565	515	1,080	571	518	1,089	767	713	1,480	761	773	1,534
50-54	405	495	900	503	520	1,023	614	556	1,170	829	748	1,577
55-59	530	555	1,085	542	516	1,058	500	491	991	815	681	1,496
60-64	490	610	1,100	385	488	873	439	454	893	646	623	1,269
65-69	440	580	1,020	443	510	953	415	474	889	472	471	943
70-74	345	450	795	371	512	883	295	439	734	366	393	759
75-79	205	355	560	239	411	650	261	396	657	257	380	637
80-84	120	245	365	157	259	416	165	314	479	189	344	533
85 +	60	160	220	64	191	255						
85-89							72	182	254	60	165	225
90 +							24	61	85	32	108	140
Total	8,430	8,895	17,325	11,437	11,331	22,766	11,359	11,163	22,522	11,053	10,887	21,940

Sources: 1971, 1981 and 1991 figures from Population Census.
2004 mid-year estimates from General Register Office for Scotland.

Population of Shetland by Area based on Census

	1931	1961	1971	1981	1991	2001
Bressay	452	269	258	334	352	384
Burra	767	648	565	850 *	929	850
Delting	958	701	718	2,211	1,976	1,734
Dunrossness	1,089	857	907	1,591	1,502	1,471
Fair Isle	108	64	65	69 *	67	69
Fetlar	217	127	96	101	90	86
Foula	118	54	33	45 *	42	32 *
Gulberwick/Quarff	1,518	385	171	579 *	398	662
Lerwick	4,221	5,913	6,028	6,899	7,336	6,830
Nesting	822	434	426	506	512	570
Northmavine	1,343	816	734	898	878	841
Papa Stour	100	55	24	35 *	35 *	24
Sandsting	1,552	957	912	1,002	891	945
Sandwick/Cunningsburgh	1,507	1,172	1,120	1,303 *	1,352	1,432
Scalloway**	n/a	n/a	n/a	1,160	802	812
Skerries	110	108	100	88 *	87	76
Tingwall	1,440	1,603	1,680	1,080	1,431	1,722
Trondra	91	20	17	88	117	133
Unst	1,341	1,151	1,163	1,140	1,055	720
Walls and Sandness	884	561	516	573	554	601
Whalsay	900	764	871	1,025	1,041	1,034
Yell	1,883	1,155	1,178	1,191	1,075	957
Total	21,421	17,814	17,582	22,768	22,522	21,988

* Estimated

** From 1931 to 1971 the population figures for Scalloway are included in the figures for Tingwall.

Populations were enumerated on a slightly different basis at the 1981 and 1991 Censuses, and are therefore not strictly comparable.

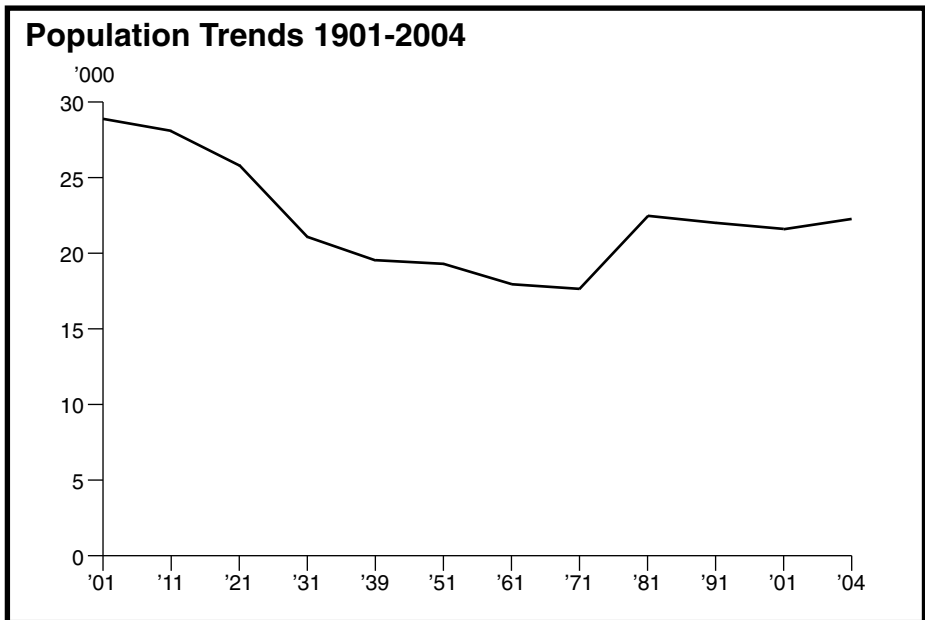
1981 Census – Resident Population **excluding** absent households.

1991/2001 Census – Resident Population **including** absent households.

Population by Doctor Registration Areas (July)

	1991	1996	2000	2002	2003	2004
Unst	900	862	716	672	671	639
Yell	1,158	1,133	1,034	1,036	1,031	1,019
Whalsay	1,136	1,110	1,093	1,094	1,097	1,091
Northmavine	700	676	699	671	668	676
Brae	2,775	2,733	2,444	2,358	2,468	2,449
Walls	665	695	685	672	664	693
Bixter	1,047	1,085	1,035	1,045	1,059	1,082
Levenwick	2,429	2,386	2,234	2,200	2,584	2,596
Scalloway	2,677	2,670	2,580	2,591	2,761	2,792
Lerwick	9,373	9,617	9,622	9,590	9,016	9,028
Total	22,860	22,967	22,142	21,929	22,019	22,065

Source: Shetland Health Board



Source: General Register Office, Scotland

Economy and Industry

Economic Performance

The last economic survey conducted by Fraser of Allander Institute in 1998 calculated the overall value of the Shetland economy to be £761,261,000. The table below illustrates the contribution made by some sectors in recent years.

Value of Key Sectors of the Shetland Economy (£ m)

	1996	2000	2001	2002	2003
Oil Production Operations	50.4	53.0	116.1	65.0	57.7
Combined Fisheries Output	97.8	202.8	223.9	208.2	243.1
Agriculture	14.3	11.7	12.4	13.1	13.1
Knitwear	4.0	5.0	2.5	3.0	2.5
Tourism	11.3	12.0	12.75	12.6	12.6
Shetland Islands Council	111.1	124.7	150.5	133.4	127.0
Total	288.9	409.2	518.1	435.3	456.0

As the role of the oil industry declines in Shetland, it is important that its value in economic terms is replaced. The approach taken has been to identify and encourage potential development opportunities in the traditional industries. At present this approach would seem to be succeeding and although the relative value of the oil industry has declined since its peak in the early 1980s, it still provides a significant input to the local economy which it is hoped will continue well into the future. Operations significantly increased during 2001 due to the Gas Plant Overhaul and Oil Recovery programme which took place at the Sullom Voe Oil Terminal.

Traditional Industry Output Values (£ m)

	1982/83	1985/86	1992	1996	2001	2002	2003
Fish Catching	11.2	17.0	20.0	97.8	223.9	208.2	243.1
Fish Processing	12.7	15.0	25.0				
Salmon Farming	0.0	3.3	33.0				
Agriculture	5.8	7.8	11.0	14.3	12.4	13.1	13.1
Knitwear	4.2	6.4	4.0	4.0	2.5	3.0	2.5
Tourism	3.5	5.9	10.0	11.3	12.75	12.6	12.6
Total	37.4	55.4	103.0	127.4	251.6	236.9	271.3

Source: Economic Development Unit, SIC & Review of the Shetland Economy, AB Associates Ltd.

Employment

Economic Activity in Shetland

	1981			1991			2001		
	Male	Female	Total	Male	Female	Total	Male	Female	Total
A	11,437	11,331	22,768	11,359	11,163	22,522	11,071	10,917	21,988
B	8,511	8,493	17,004	8,653	8,633	17,286	8,100	7,598	15,698
C	7,056	3,901	10,957	6,906	4,541	11,447	6,569	5,220	11,789
D	6,721	3,743	10,464	6,382	4,309	10,691	6,337	5,043	11,380
E	335	158	493	387	149	536	218	159	377
F	82.9%	45.9%	64.4%	79.8%	52.5%	66.2%	84.1%	68.7%	75.1%

A – Total Population (Census); B – 1981 & 1991 - Total Population 16+; 2001 - Total Population 16-74;

C – Resident: Economically Active; D – Resident: In Employment;

E – Resident: Out of Employment; F – % Economically Active (of 16+ population)

Source: Population Census

Unemployment

June	1971	1976	1981	1986	1991	1996	2001	2002	2003	2004
Shetland %	3.8	3.5	5.3	6.3	3.6	3.8	1.4	1.8	2.0	1.8
Actual Figures Jan:	360	n/a	402	805	354	438	266	199	291	239
July:	170	n/a	457	771	314	466	192	240	256	261
Orkney %	3.9	3.4	9.0	11.7	5.5	4.3	2.2	1.9	1.5	1.8
Western Isles %	18.0	14.5	20.1	19.1	14.5	10.6	4.9	5.2	3.4	3.4
Aberdeen %						3.7	1.7	1.6	1.8	2.0
Aberdeenshire %	3.7*	3.3*	7.6*	8.8*	4.0*	4.2	2.1	2.0	1.4	1.3
Scotland %	5.5	6.7	13.5	14.0	9.0	7.7	4.2	4.1	3.2	2.9

* Prior to 1996 these figures refer to Grampian Region.

Source: JobCentre Plus, Edinburgh

School Leavers' First Destinations 2003/04

School	Full-time Higher Education	Full-time Further Education	Training	Employment	Other*	Total Leavers
Aith Junior High	0	2	0	9	0	11
Anderson High	100	32	0	91	25	248
Baltasound Junior High	0	0	0	1	3	4
Brae High	10	5	0	24	6	45
Mid Yell Junior High	0	2	0	1	0	3
Sandwick Junior High	0	1	0	10	3	14
Scalloway Junior High	0	2	0	7	0	9
Skerries School	0	0	0	0	0	0
Symbister Junior High	0	0	0	3	1	4
Total	110	44	0	146	38	338
% Leavers	32.5	13.0	0	43.2	11.3	100.0

* Includes unemployed

Source: Careers Scotland

Employment in Shetland

	1971(a)	1977(b)	1981(c)	1983(d)	1991(d)	1997(d)	2000(d)	2003(e)
Primary	279	322	938	1,276	1,258	1,465	1,055	1,280
Manufacturing	1,335	1,125	940	923	1,121	1,322	1,052	1,105
Construction	489	1,004	906	763	817	946	1,375	928
Services	2,885	4,400	6,189	5,779	5,817	8,125	8,416	8,957
Self Employed	1,445	1,450	1,452	1,455	1,691	–	–	–
Total	6,433	8,301	10,425	10,196	10,704	11,858	11,898	12,270

Statistics for Self-Employed are now included in the figures for Primary, Manufacturing, Construction and Services.

These figures do not include agricultural employment.

Sources: (a) 1971 Population Census and Department of Employment; (b) Department of Employment; (c) Research and Development Department, SIC estimate; (d) Development Department, SIC; (e) Economic Development Unit, SIC

Employment Distribution (June 2003) *

Area	In Employment				Subtotals					
	Male		Female		Male	Female	FT	PT	Total	FTE**
	FT	PT	FT	PT						
Bressay	46	8	8	18	54	26	54	26	80	63
Burra & Trondra	55	6	8	20	61	28	63	26	89	72
Delting	821	134	244	243	955	487	1,065	377	1,442	1,191
Dunrossness	136	51	72	125	187	197	208	176	384	267
Fetlar	3	4	8	11	7	19	11	15	26	16
Gulb, Quarff & Cunn †	57	6	9	60	63	69	66	66	132	88
Lerwick	2,642	592	1,770	2,187	3,234	3,957	4,412	2,779	7,191	5,338
Nesting & Lunnasting	39	8	13	15	47	28	52	23	75	60
Northmavine	55	11	22	90	66	112	77	101	178	111
Sandness & Walls	96	12	40	103	108	143	136	115	251	174
Sandsting & Aithsting	165	21	59	87	186	146	224	108	332	260
Sandwick	64	21	40	58	85	98	104	79	183	130
Scalloway	215	27	157	135	242	292	372	162	534	426
Skerries	22	5	4	16	27	20	26	21	47	33
Ting, White & Weis ◇	130	29	34	74	159	108	164	103	267	198
Unst	150	38	74	138	188	212	224	176	400	283
Whalsay	195	9	33	100	204	133	228	109	337	264
Yell	131	31	45	115	162	160	176	146	322	225
Total	5,022	1,013	2,640	3,595	6,035	6,235	7,662	4,608	12,270	9,199

Source: Economic Development Unit, SIC

* It is important to note that this table reflects the areas where respective companies and organisations are based, not necessarily where employees are based. Also, these figures do not include agricultural employment.

** Full-Time Equivalent jobs – 3 PT jobs = 1 FTE

† Gulberwick, Quarff and Cunningsburgh

◇ Tingwall, Whiteness and Weisdale

Fisheries

Fish Landings in Shetland

	White Fish		Shell Fish		Sandeels	
	Tonnes	£	Tonnes	£	Tonnes	£
1971	17,954	1,057,691	783	159,370	0	0
1976	13,457	2,587,548	588	202,339	18,548	515,398
1981	11,444	3,212,175	695	328,200	40,731	1,173,560
1986	18,941	9,979,705	736	630,639	11,960	359,162
1991	10,603	10,823,185	1,004	1,402,010	8,249	392,776
1993	12,633	11,670,477	1,020	1,374,362	2,943	123,949
1995	12,851	13,207,665	1,727	2,145,969	4,506	249,584
1996	15,810	13,090,578	1,725	1,784,000	9,008	489,110
1999	15,807	11,586,405	1,674	2,027,324	6,775	282,638
2000	18,499	12,185,057	1,573	1,591,563	9,654	399,949
2001	10,868	12,739,484	1,234	1,633,827	1,264	55,081
2002	9,345	9,768,513	1,136	1,694,689	1,174	54,866
2003	6,544	7,047,270	1,069	1,523,167	186	10,239

White fish, shell fish and sandeel landings are by UK vessels only. Herring, mackerel and other pelagic statistics are by UK and foreign vessels.

Weight and Value of Catch by Species for 2003 (all vessels)

Species	Weight (Tonnes)	Value (£)	Species	Weight (Tonnes)	Value (£)
Anglerfish (Monks)	666	1,636,283	Other or mixed Demersal	21	12,174
Argentines (Silver Smelt)	12	1,800	Plaice	128	99,039
Brill	<1	<100	Pollack (Lythe)	72	79,768
Cattfish	26	39,888	Redfish	3	4,086
Cod	945	1,654,064	Roes	4	5,097
Crabs - Brown (Edible)	78	66,458	Saithe (Coalfish)	528	196,112
Crabs - Velvet (Swim)	2	2,037	Sandeels	186	10,239
Dogfish - Spur	61	99,105	Scallops	761	1,013,765
Eels	<1	<100	Scallops - Queen	4	3,607
Eels - Conger	<1	<100	Sharks	1	2,483
Haddock	2,578	1,899,090	Shrimps - Pink (Northern Prawn)	<1	<100
Hake	21	30,326	Skates and Rays	92	52,269
Halibut	11	34,900	Sole - Lemon	29	58,323
Herring	19,590	2,345,649	Squid	52	103,480
John Dory	<1	655	Turbot	4	23,899
Ling	287	309,687	Tusk	19	12,127
Lobsters	<1	403	Whelks	59	23,609
Mackerel	47,934	19,961,840	Whiting	705	553,352
Mackerel - Horse	25	1,105	Whiting - Blue	32,518	2,292,618
Megrims	117	197,483	Witches	42	41,764
Nephrops (Norway Lobster)	114	309,804			
Other flatfish	5	4,384	Total	107,706	33,183,172

Herring		Mackerel		Other Pelagic	
Tonnes	£	Tonnes	£	Tonnes	£
22,813	584,148	190	3,296	116	2,126
4,010	461,243	775	38,623	973	64,895
871	57,158	826	49,560	0	0
51,230	5,216,706	226	29,558	313	31,302
41,684	3,963,148	38,514	4,829,790	5,124	284,674
32,310	3,392,744	59,871	7,547,925	27,514	1,331,573
61,826	6,048,796	38,533	5,805,839	15,884	841,889
27,440	2,286,944	5,995	1,957,673	20,004	1,184,439
16,221	1,539,071	15,765	3,725,092	33,560	1,337,352
11,390	1,113,585	21,862	5,838,570	25,733	1,083,675
12,087	2,977,278	25,374	11,014,650	29,266	1,502,869
16,823	2,749,345	48,482	22,586,256	16,525	1,138,626
19,590	2,345,649	47,934	19,961,840	32,554	2,295,523

All Fish Landed in Shetland 2003

	Demersal		Pelagic		Shell Fish	
	Tonnes	£	Tonnes	£	Tonnes	£
Jan	619	660,822	13,150	6,142,969	59	91,257
Feb	615	621,155	10,657	4,037,930	74	113,774
Mar	709	723,888	15,118	1,634,147	106	141,081
Apr	712	820,216	8,437	594,875	100	114,587
May	598	683,111	2,358	152,107	139	223,454
Jun	579	637,103	4,441	313,171	97	141,743
Jul	478	504,709	6,782	798,516	70	87,372
Aug	663	556,175	12,969	1,581,119	82	122,160
Sep	515	526,707	32	9,903	97	128,809
Oct	372	436,717	10,242	3,693,758	88	119,587
Nov	389	501,969	4,756	1,956,198	95	139,802
Dec	302	384,191	11,134	3,688,319	61	99,541
Total	6,552	7,056,763	100,076	24,603,012	1,069	1,523,167

Included in Whitefish Total

	1991		1996		2001		2003	
	Tonnes	£	Tonnes	£	Tonnes	£	Tonnes	£
Cod	2,220	2,744,602	3,683	3,200,233	1,983	3,115,230	945	1,654,064
Haddock	2,140	2,447,125	3,347	1,952,526	2,880	2,768,423	2,578	1,899,090
Whiting	2,463	1,437,210	1,790	966,244	1,206	1,001,226	705	553,352
Monkfish	1,429	3,554,426	2,676	5,047,928	1,325	3,753,661	666	1,636,283

Average Quay Prices per tonne (£)

	1981	1986	1991	1996	2001	2003
Cod	337.31	828.42	1,236.31	868.92	1,570.87	1,750.00
Haddock	274.25	565.40	1,143.52	583.37	961.40	737.00
Whiting	270.31	506.43	583.52	539.80	830.47	785.00
Monkfish	584.69	1,507.60	2,487.35	1,886.37	2,833.34	2,458.00

Total Wet Fish Landed in Shetland

	1981	1986	1991	1996	2001	2003
Tonnes	53,872	74,839	104,187	78,627	77,556	106,630
£	4,492,453	15,547,208	21,338,570	20,907,671	28,284,281	31,659,776

Landings by Shetland Vessels outwith Shetland

	1971	1976	1981	1986	1991	1996	2001	2003
Tonnes	3,322	1,250	28,805	39,735	38,953	63,375	61,210	35,321
£	382,056	289,064	2,741,617	5,554,051	8,077,129	20,727,987	23,075,860	14,442,963

Distribution of Licensed Vessels by District

	1971	1976	1981	1986	1991	1996	2001	2003		
Creek 1 — South Mainland			13	13	11	5	3	13	17	19
Creek 2 — Lerwick/Bressay			13	20	17	13	7	39	40	36
Creek 3 — Whalsay			49	53	33	22	21	37	42	34
Creek 4 — Out Skerries							4	4	8	9
Creek 5 — Yell/Fetlar/Unst			29	26	14	7	5	25	23	20
Creek 6 — Northmavine			14	15	7	4	4	8	9	11
Creek 7 — Central Mainland			—	—	—	0	5	8	14	12
Creek 8 — West Mainland			30	32	28	17	10	28	26	25
Creek 9 — Scalloway/Burra/Trondra			68	61	45	41	32	60	55	42
Total			216	220	155	113	91	226	235	208

Licensed Vessel Size

	Over 80ft	40-80ft	Under 40ft	Total
1971	0	64	152	216
1976	1	71	148	220
1981	8	52	95	155
1986	16	36	76	128
	Over 25m	10-25m	Under 10m	Total
1991	20	46	23	89
1996	23	57	146	226
2001	23	35	177	235
2003	17	29	162	208

Source: Sea Fisheries Statistics Unit, Scottish Executive Environment & Rural Affairs Department (SEERAD)

Employment in the Shetland Fishing Industry *

	1971	1976	1981	1986	1991	1996	2001	2003
Catching	636	652	542	507	458	502	352	299**
Ancillary	171	225	243	265	330	301	220*	204*
Total	807	877	785	772	788	803	572	503

* Some fishermen serve on more than one vessel

** 270 are classed as full-time employed, 29 as part-time employed

* Figures were obtained using multipliers from Fraser of Allander Input-Output Table, 1999.

Sources: Sea Fisheries Statistics Unit, Scottish Executive Environment & Rural Affairs Department (SEERAD), Shetland Fisheries Training Association, and Economic Development Unit, SIC

Fisheries Protection

The enforcement of UK and EU Common Fisheries Policy regulations is the responsibility of the Scottish Fisheries Protection Agency through inspections and observations by its protection vessels and sightings by SFPA surveillance aircraft.

The statistics below relate to activity in UK waters north of 59°30'N, and between 4°W and the UK/Norwegian median line.

Vessel Nationality	Fisheries Protection Vessel Boardings				Fisheries Protection Vessel Sightings				Fisheries Protection Aircraft Sightings			
	1996	2001	2003	2004	1996	2001	2003	2004	1996	2001	2003	2004
Belgium	2	0	0	0	3	0	0	0	12	0	2	0
Denmark	31	14	9	17	52	22	50	34	141	125	274	180
Eire	0	3	0	2	26	5	11	8	60	38	47	65
Faroe	3	2	0	0	8	9	5	4	12	20	22	30
France	19	20	17	11	58	41	39	38	154	116	239	180
Germany	17	11	10	3	30	15	15	12	78	66	80	42
Iceland	0	0	0	0	1	0	0	0	4	3	2	1
Netherlands	6	8	8	8	3	16	16	15	16	30	52	69
Norway	74	49	27	37	134	125	97	116	419	296	537	482
Spain	0	0	0	0	0	0	0	0	2	2	2	3
Sweden	0	0	0	0	1	4	5	0	8	28	40	26
UK	301	321	188	111	1,047	1,273	779	538	3,608	2,967	3,235	2,604
Other	0	0	0	0	1	3	0	0	4	10	6	2
Total	453	428	259	189	1,364	1,513	1,017	765	4,518	3,701	4,538	3,684

Source: Scottish Fisheries Protection Agency

Fish Processing

Fish Processing

	1977	1981	1986	1991	1996	2000	2001	2003	2004
Firms	11	10	11	14	16	23	20	16	18
Factories	15	13	14	15	17	21	21	16	17

Processing Lines

	1977	1981	1986	1991	1996	2000	2001	2003	2004
White Fish	11	10	12	5	6	10	10	8	9
Herring and Mackerel	3	2	1	1	1	7	7	6	8
Fish Meal Plants	3	1	2	1	1	1	1	1	1
Shellfish	3	2	2	3	3	8	8	7	10
Salmon	0	0	0	7	6	14	14	9	10
Smoking	3	2	2	3	3	6	7	6	7

Value (estimated turnover £ m)

1991	1996	1999	2000	2001	2002	2003	2004
25.00	51.50	78.44	89.84	106.00	102.00*	117.00	122.00*

Source: Shetland Fish Processors' Association

* Estimated

Employment

	1977	1981	1986	1991	1996	2001	2002	2003	2004
Full-time					328	448	383	410	290
Part-time	967	480	567	578	234	209	123	38	82
Total	967	480	567	578	562	657	506	448	372

Sources: Shetland Fish Processors' Association, Shetland Fisheries Training Association and Economic Development Unit, SIC

Aquaculture

Salmon Farms

	1984	1986	1991	1996	2001	2002	2003
Companies Established	5	13	0	1	0	0	0
Companies Producing	4	27	59	46	46	46	46
Total	9	40	59	47	46	46	46

Production

	1984	1986	1991	1996	2001	2002	2003
Smolts Introduced (x000)	294	935	4,643	6,234	17,395	17,260	14,446
Production (tonnes)	50	1,500	10,614	19,710	43,871	49,341	63,948
Average Tonnes per Farm	13	56	180	428	954	1,072	1,390

Value

	1984	1986	1991	1996	2000	2001	2002	2003
Production value (£m)	0.22	6	33	37	77.2	68.9	76.8	89.5
Average per Tonne (£)	4,400	3,787	3,146	1,878	2,183	1,571	1,600	1,510

Employment

	1986	1991	1996	2000	2001	2002	2003
Direct	158	304	323	379	387	389	371
Ancillary	168	482	360	574	659	758	794
Total	326	786	683	953	1,046	1,147	1,165

Sources: Shetland Salmon Farmers' Association; Scottish Executive Environment & Rural Affairs Department (SEERAD) and Economic Development Unit, SIC

Manpower and Production by Region

Region		Staff		Annual Prod. (tonnes)	Prod. (t/man)	Grilse		Pre-salmon		Salmon	
		F/T	P/T			Tonnes	Mean wt (kg)	Tonnes	Mean wt (kg)	Tonnes	Mean wt (kg)
Shetland	1991	202	102	10,614	35	826	2.8	4,322	3.1	5,466	3.9
	1996	209	114	19,710	61	2,042	2.8	8,814	3.9	8,854	4.8
	2001	227	52	39,745	142	4,905	3.7	16,441	4.3	18,269	4.4
	2002	238	46	49,341	174	7,107	3.6	19,646	4.4	22,588	4.9
	2003	222	48	63,948	237	3,898	3.9	21,698	4.5	38,352	4.5
All Scotland	1991	1,014	272	40,593	32	7,449	2.1	13,577	2.6	19,567	3.2
	1996	1,151	242	83,121	60	25,776	3.0	32,222	3.8	24,485	4.5
	2001	1,066	191	138,520	110	42,066	3.8	54,473	4.7	40,754	4.5
	2002	1,083	223	145,609	112	34,380	3.4	57,943	4.2	52,462	4.8
	2003	1,066	151	166,339	142	32,977	3.8	63,228	4.5	76,892	4.6

Source: Scottish Executive Environment & Rural Affairs Department (SEERAD)

Agriculture

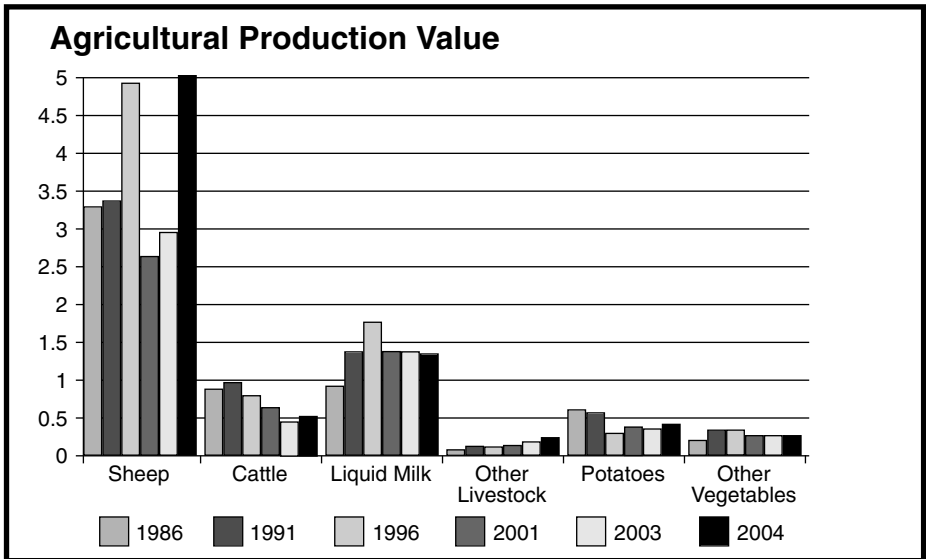
Main and Minor Holdings

	1971	1981	1991	2001	2003	2004
Land Use (ha):						
Tillage	1,410	1,062	740	437	400	353
Grassland and Crops	8,407	8,400	14,304	22,016	23,417	23,287
Rough/Common Grazing	129,019	133,160	130,943	124,021	124,789	123,067
Total Area Rented	38,130	36,046	36,781	43,060	43,386	42,551
Total Area Owned	28,161	30,368	33,840	35,622	36,539	36,522
No of Holdings	2,439	2,240	2,311	2,076	2,034	1,990
No of Common Grazings	93	93	100	141	143	145
Area Under Crops (ha):						
Grass (excl Rough Grazings)	6,998	7,338	13,563	21,580	23,017	22,934
Barley and Oats	857	511	214	50	55	66
Turnips and Swedes	134	103	106	40	43	48
Kale and Cabbage	73	34	30	15	10	11
Potatoes	256	232	144	53	42	46
All Other Crops	17	25	126	112	109	86
Livestock:						
Beef Cows and Heifers	2,492	1,896	2,129	2,172	2,311	2,263
Dairy Cows and Heifers	791	593	655	617	647	660
Total Cattle	6,945	5,103	5,701	5,756	6,010	6,110
Breeding Ewes and Gimmers	n/a	n/a	210,630	215,480	199,114	199,163
Total Sheep	264,779	297,558	387,468	393,686	360,703	362,961
Pigs	9	83	28	112	118	38
Poultry	12,950	8,672	4,428	4,972	4,396	3,965
Registered Slaughterhouses	9	8	4	3	3	3
Sheep Slaughtered	8,417	9,592	8,712	3,520	4,580	4,198
Cattle Slaughtered	485	278	339	76	95	299
Pigs Slaughtered	0	0	33	167	166	314
Sheep Exported	43,464	60,542	99,404	114,251	96,711	128,139
Cattle Exported	1,947	2,066	2,117	1,031	855	1,763
Ponies Exported	417	407	239	232	93	198
Pigs Exported	0	0	0	0	5	6
Wool Production (est kg)	218,000	245,000	337,000	323,220	290,000	285,000
Milk:						
Dairy Units	23	23	16	7	6	6
Milk Production (litres)	1,428,975	2,069,550	2,584,564	2,410,045	2,305,845	2,295,510
Employment:						
F/T and P/T Employees	222	204	244	336	292	272
F/T and P/T Occupiers	439	457	637	599	544	538
Others (including occupiers less than half time, wives/husbands of occupiers and casual/seasonal labour)	584	718	1,591	1,655	1,604	1,610

Sources: Scottish Executive Environment & Rural Affairs Department (SEERAD), The Meat Hygiene Service, Lerwick Port Authority, Shetland Farm Dairies Ltd. and Shetland Wool Brokers.

Production

Value (estimated £m)	1986	1991	1996	2001	2003	2004
Sheep	3.28	3.35	4.93	2.63	2.99	5.06
Cattle	0.86	1.00	0.73	0.64	0.46	1.02
Liquid Milk	0.90	1.40	1.74	1.43	1.36	1.34
Other Livestock (inc eggs)	0.11	0.12	0.13	0.14	0.17	0.22
Potatoes	0.65	0.58	0.27	0.43	0.34	0.38
Other Vegetables	0.22	0.35	0.36	0.26	0.25	0.25
Total	6.02	6.80	8.16	5.53	5.57	8.27



Source: Economic Development Unit, SIC

SEERAD & EU Assistance (£m)

	1986	1991	1996	2001	2003	2004
Hill Livestock Compensatory Allowance (HLCA)	1.33	1.61	1.25	–	–	–
Annual Premium Schemes	0.89	3.29	4.71	3.04	3.10	4.08
Environmentally Sensitive Area (ESA)	–	–	0.13	2.01	2.20	2.29
Less Favoured Areas Support Scheme (LFASS)	–	–	–	1.92	1.99	2.04
Total Assistance	2.22	4.90	6.09	6.97	7.29	8.41
Total Production Value and Value of Assistance	8.24	11.70	14.25	12.50	12.86	16.68

Source: Scottish Executive Environment & Rural Affairs Department (SEERAD)

Shetland Islands Council Charitable Trust

Assistance to Shetland Agriculture

As part of Shetland Islands Council's Agricultural Strategy, the SIC Charitable Trust operates an Agricultural Loan Scheme which started in September 1982. The following table summarises the salient features of 423 agricultural loans approved up to and including the Trust's meeting of 31 March 2004.

Development Projects

Type of Project	Numbers	Hectares	Metres	Gross Cost £
Drainage/Ditching		98	392,287	353,600
Fencing		219	535,008	1,071,230
Roads			30,977	213,390
Re-seeding		4,049		1,380,884
Buildings				5,583,060
Machinery				2,301,809
Livestock: Sheep	19,889			565,822
Cattle	837			470,565
Pigs	133			6,300
Hens	300			594
Quota: Sheep	7,724			181,723
Cattle	354			97,066
Milk (litres)	1,248,336			484,492
Land Purchased/Assigned		5,941		2,177,523
Emergency Stockpile				32,000
Other				284,054
Inflation				314,934
Total Gross Cost				15,519,046

Financed by: Grants	4,689,405
Personal Contributions	2,465,920
Loans	8,363,721

Total Funding	15,519,046
----------------------	-------------------

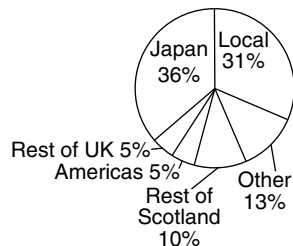
Source: Shetland Charitable Trust

Knitwear

The major marketing problem facing the Shetland knitwear industry is the plagiarism of the word 'Shetland' by knitwear manufacturers all over the world. Many millions more garments labelled 'Shetland' are turned out than are actually produced in the islands, or can actually be accounted for by the production of wool from the native sheep. To counter this a certification trademark, 'The Shetland Lady', was registered. This forms the cornerstone of the industry's marketing activities.

Shetland Knitwear Export Markets 2004

Market	% of production
Japan	36
Local	31
Rest of Scotland	10
Rest of UK	5
Americas	5
Other	13



Value (estimated turnover £ m)

1976	1981	1986	1991	1996	1999	2000	2001	2002	2003
2.0	4.0	6.4	3.5	4.0	4.9	5.0	2.5*	3.0*	2.5*

Employment

	Employees			Self-Employed			Home Knitters
	Full Time	Part Time	Total	Full Time	Part Time	Total	
1971	234	111	345	n/a	n/a	n/a	2,268
1976	155	71	226	n/a	n/a	n/a	2,098
1981	n/a	n/a	131	n/a	n/a	n/a	1,200
1986	112	51	163	47	16	63	n/a
1991	56	33	89	15	13	28	1,345
1996	89	15	104	9	15	24	986
1998	110	17	127	8	14	22	975
1999	105	16	121	8	14	22	960
2000	59	17	76	8	6	14	n/a
2003	75	75	150	n/a	n/a	n/a	n/a

Shetland Tweed

A switch from traditional single width to double width looms producing a range of fine woollen tweeds and cloths using Shetland wool, has rejuvenated this industry. Statistics relating to the weaving sector are included above.

* Estimated

Sources: Shetland Knitwear Trades Association; Economic Development Unit, SIC and Review of the Shetland Economy, AB Associates Ltd; Stewart Miller Associates.

Crafts

Shetland has a long tradition of producing quality craft goods. The local development agencies participated in a joint "Craft Initiative" throughout 1995 and 1996, which resulted in the formation of a Craft Association and appointment of a Craft Officer in 1997. The group became the Shetland Art and Craft Association and has operated without a Craft Officer since 2000. In 2002 the Shetland Arts Trust appointed a Development Officer to carry out an Indigenous Craft Development Project for a period of three years.

The following types of craft business are operating at the present time:

Basketmakers	traditional Shetland kishies straw baskets
Ceramics	potters tile producers
Glass	stained glass
Jewellery	silver smithing costume jewellery
Leather	bridles, bags, belts
Metal Work	welding sculptors farrier, blacksmith
Paper	cards cartoons photographs
Pyrographers	pyrography items
Textiles	needle point weavers tapestry felted wool soft toys
Wood	cabinet makers boat builders fiddle makers turners toys

Employment 2003

	Male		Female		Total	
	F/T	P/T	F/T	P/T	F/T	P/T
	12	2	19	27	31	29

Note: These figures do not include those people active in the craft sector on a hobby basis.

Sources: Shetland Art and Craft Association and Economic Development Unit, SIC

Tourism

Shetland Islands Tourism Bed Spaces

Type of Accommodation	1976	1981	1986	1991	1996	2001	2003	2004
Hotels Lerwick	149	231	272	294	296	319	322	338
Hotels Country	292	342	310	301	295	225	244	251
Guest Houses Lerwick			29	31	75	87	131	116
Guest Houses Country			124	97	95	60	56	44
Bed & Breakfast Lerwick	206	103	71	93	65	80	39	35
Bed & Breakfast Country	154	203	107	208	143	142	109	149
Self Catering Lerwick			23	38	22	46	50	50
Self Catering Country	169	271	285	515	383	300	280	391
Caravans Country	106	104	39	17	0	0	0	0
Hostels Lerwick			48	64	60	60	60	60
Hostels Country	76	81	146	99	61	59	61	58
Camp Sites Lerwick			28	60	140	140	140	140
Camp Sites Country	0	0	117	42	39	60	100	100
Böds	0	0	0	0	63	71	71	71
Total	1,152	1,335	1,500	1,796	1,677	1,625	1,659	1,803

Tourist Information Centre Enquiries and Bookings

	1981	1986	1991	1996	2001	2003	2004
Postal Enquiries*	1,696	5,201	6,845	3,586	n/a	15,106	15,747
Telephone Enquiries	n/a	966	2,115	3,291			
Advance Bookings	101	220	252	383	869	500	407
Immediate Bookings	412	997	1,435	927	492	445	478

* Postal enquiries excludes enquiries relating to Scottish Tourist Board campaigns.

** Estimated

Source: Shetland Islands Tourism

Employment

	1978	1981	1986	1991	1994	1997	2000	2003
Hotel and Guest Houses	161	233	280	356	340	344	314	313
Bed & Breakfast Accom.	n/a	n/a	40	81	40	52	40	23
Self Catering, Cottages, etc.	n/a	n/a	64	89	28	62	67	36
Total	161	233	384	526	408	458	421	372

Source: Economic Development Unit, SIC

Total Visitor Expenditure in Shetland (£ m)

1982	1986	1991	1996	1998	1999	2001
3.6	6.9	10.0	11.3	12.0	14.4	11.9

Visitors include both tourists and business visitors. Expenditure includes accommodation, and any goods and services purchased while in Shetland.

Sources: Shetland Visitor Survey 1995, 2000, Economic Development Unit, SIC

Top Visitor Attractions in Shetland

Free Attractions	2003	2004
Shetland Museum	34,555	26,474
RSPB Sumburgh Head Reserve	28,000	30,000
Bonhoga	12,924	12,726
Shetland Jewellery	6,859	9,293
Hoswick Visitor Centre	6,531	9,336
Island of Mousa Boat Trips	4,861	4,300
Croft House Museum	4,524	5,102
Muness Castle	3,864	3,353
Tangwick Haa Museum	3,844	4,627
Old Haa	2,420	3,109
Hermaness Visitor Centre	1,800	1,832
Burland Croft Trail	800	1,500
Bod of Gremista	785	709

Paid Attractions	2003	2004
Jarlshof	10,987	15,320
Unst Heritage Centre	2,758	2,724
Unst Boat Haven	2,721	2,650
Quendale Water Mill	2,015	2,664
Island of Noss	1,551	1,266
Fetlar Interpretive Centre	1,360	1,072
Islesburgh Summer Exhibition	1,355	2,125
Up-Helly-Aa Exhibition	1,000	1,200
Hanseatic Booth, Whalsay	230	225

Source: Visit Shetland and Shetland Arts Trust

Cruise Liner Passengers (Lerwick Harbour)

1981	1986	1991	1996	2001	2002	2003	2004
3,564	6,279	5,240	12,852	11,601	10,864	16,008	20,752

Cruise Liner Arrivals (Lerwick Harbour)

1988	1991	1996	2001	2002	2003	2004
20	21	35	42	37	48	47

Source: Lerwick Port Authority

Shetland Mini-Cruise Passengers*

1976	1981	1986	1991	1996	1998	1999	2003	2004
1,390	3,964	1,768	2,014	1,038	1,201	867	13	429

Orkney and Shetland Mini-Cruise*

1996	1998	1999	2003	2004
2,215	1,652	1,474	919	1,537

* 2000-2002 figures are unavailable due to NorthLink taking over the service from P&O Ferries.
Source: P&O Scottish Ferries Ltd., Orkney and Shetland Touring Co. Ltd.

Smyril Line (Summer Service only)

Passengers					
Lerwick inbound	2003	2004	Lerwick outbound	2003	2004
Tórshavn	2,925	4,014	Tórshavn	3,370	3,015
Bergen	2,454	2,877	Bergen	2,334	3,610
Hantsholm	489	74	Hantsholm	703	677
	5,868	6,965		6,407	7,302
Vehicles					
Lerwick inbound	2003	2004	Lerwick outbound	2003	2004
Tórshavn	523	912	Tórshavn	595	573
Bergen	492	721	Bergen	487	896
Hantsholm	176	10	Hantsholm	225	156
	1,191	1,643		1,307	1,625

Source: Smyril Line

Origin of Visitors 2000

	%	Overseas Visitors	%
Scotland	44	Norway, Sweden, Finland	3.5
Rest of Britain	36	USA/Canada	3.8
Overseas	20	Australia/New Zealand	2.7
	100	Germany	2.1
		Rest of Europe	3.7
		Faroe	1.2
		Other	3.1
		Total	20.1

Source: Shetland Visitor Survey 2000, Macpherson Research, Inverness

Oil

The North Sea oil industry has long been recognised as a key component of not only Shetland's economy but the economy of the UK as a whole. At a local level this reflects in three main areas: Sullom Voe Oil Terminal, the offshore oil and gas fields and the services related to both of these.

Sullom Voe Oil Terminal

The terminal is situated at Calback Ness on a site of approximately 400 hectares (1,000 acres) on the shores of Sullom Voe, 46km (29 miles) north of Lerwick. BP Exploration Operating Company Ltd operates the terminal on behalf of companies participating in the Brent and Ninian pipeline groups. The terminal currently has a throughput design capacity of 1.2 million barrels of crude oil per day and reached a peak in 1984 with a total receipt of 439,434,656 barrels (58,328,785 tonnes). It now averages over 650,000 barrels per day.

Exploration and Development

- 1970** – The exploration phase for oil and gas offshore Shetland began when the Government allocated the first Licence Blocks.
- 1975** – The development phase including the laying of the Brent and Ninian pipeline systems and the floatout of the Beryl and Brent field production platforms. Construction work began on the Sullom Voe Oil Terminal.
- 1978** – The first oil was piped to Sullom Voe through the Brent pipeline from the Dunlin oilfield on 25 November. The first oil was shipped out from the terminal by the Shell tanker 'Donovania' five days later and on 3 December the first oil arrived through the Ninian pipeline from the Heather oilfield.
- 1980** – Construction workforce peaked at over 7000.
- 1982** – In April the first fractionation of gas took place at the terminal and a month later the first gas was shipped out. In December the final construction and commissioning work at the terminal was completed and Sullom Voe received its one billionth (1,000 million) barrel of oil.
- 1994** – In August the terminal recorded one million manhours without a lost time injury.
- 1997** – On 13 June the six billionth barrel of crude oil was produced at the terminal.
- 1998** – During April the terminal was awarded, for the fourth consecutive year, the Gold Award for Occupational Safety by the Royal Society for the Prevention of Accidents. On 24 April the 'Hellespont Grand' became the largest tanker to visit the terminal with a dead-weight of 421,680 tonnes, and took the largest cargo from the terminal, 376,000 tonnes. In May the LPG ship 'Havrim', 37,300 cu.m., was the 1,000th LPG vessel to visit the terminal since operations commenced. On 8 August the 'Nordic Savonita' offloaded the first cargo of oil, 38,000 tonnes/300,000 barrels, from the Schiehallion field, west of Shetland. The 'Windsor' was the first tanker to collect a cargo of 630,000 barrels of Schiehallion crude, bound for Rotterdam on 19 August. October saw the longest tanker 'Empress Des Mers' to berth at Sullom Voe. This Nassau registered tanker was 381.82 metres long.
- 1999** – On 6 January the 'Hellespont Grand' took the largest cargo of oil from the terminal: 395,567 tonnes.
- 2001** – On 15 December the seven billionth barrel of oil was produced at the terminal.

UK Port Traffic, Bulk Fuel and Crude Oil Handling Ports 2003

Port Traffic (foreign & domestic)	'000 Tonnes	% UK Traffic	Oil & Gas Traffic (foreign & domestic)	'000 Tonnes	% UK Traffic
Grimsby & Immingham	55,931	10.1	Forth	34,077	13.7
Tees & Hartlepool	53,842	9.7	Tees & Hartlepool	32,578	13.1
London	51,028	9.2	Milford Haven	31,884	12.8
Forth	38,752	7.0	Sullom Voe	26,360	10.6
Southampton	35,773	6.4	Southampton	24,318	9.8
Milford Haven	32,737	5.9	All above ports	149,217	60.0
Liverpool	31,684	5.7	All major UK ports	248,213	100.0
Sullom Voe	26,360	4.7			
Felixstowe	22,282	4.0			
Dover	18,796	3.4			
Medway	15,619	2.8			
Orkney	14,422	2.6			
Belfast	13,201	2.4			
Bristol	11,439	2.1			
Hull	10,529	1.9			
All UK ports	555,662	100.0			

Crude Oil	'000 Tonnes	% UK Traffic
Tees & Hartlepool	26,394	16.5
Sullom Voe	26,295	16.4
Forth	23,565	14.7
Southampton	15,241	9.5
Orkney	14,247	8.9
All above ports	105,742	66.0
All major UK ports	160,319	100.0

Source: Maritime Statistics Branch, Department of the Environment, Transport & the Regions

Sullom Voe Terminal: Oil Throughput (tonnes/barrels per day (bpd))

	Brent Pipeline System (tonnes)	Ninian Pipeline System (tonnes)	Schiehallion (tonnes)	Total (tonnes)	Brent Pipeline System (av. bpd)	Ninian Pipeline System (av. bpd)	Schiehallion (av. bpd)	Terminal (av. bpd)
1978	856,991	92,186	-	949,177	177,526	23,439	-	n/a
1981	23,116,490	15,545,240	-	38,661,730	478,094	317,083	-	795,177
1986	38,692,099	16,875,047	-	55,567,146	800,134	346,513	-	1,146,647
1991	20,263,701	15,576,512	-	35,840,213	419,864	322,592	-	742,455
1996	23,332,990	14,368,498	-	37,701,488	483,404	297,684	-	781,088
2001	13,368,931	5,994,252	5,441,468	24,804,651	277,732	124,520	110,966	513,219
2003	10,191,862	4,660,603	6,096,566	20,949,031	211,432	96,666	117,168	425,266
2004	8,176,574	5,014,621	5,374,253	18,565,448	169,614	104,025	103,227	376,866

Sullom Voe Terminal: Gas Throughput (tonnes)

	Brent Pipeline System Propane	Brent Pipeline System Butane	Ninian Pipeline System Propane	Ninian Pipeline System Butane	Total Propane	Total Butane
1986	476,742	375,641	346,478	254,621	823,220	630,262
1991	89,961	57,906	260,536	190,250	350,497	248,164
1996	73,381	18,284	214,052	174,388	287,433	192,672
1998	62,060	24,570	153,753	119,169	215,813	143,739
2001	32,479	22,647	57,746	41,542	90,225	64,189
2003	30,691	19,545	58,051	42,079	88,742	61,624
2004	17,124	6,198	57,333	46,218	74,457	52,416

Sullom Voe: Tankers Using Port

	1979	1981	1986	1991	1996	2001	2002	2003	2004
Oil	270	432	654	423	395	295	227	237	221
Gas	0	0	112	45	32	12	19	11	7

Oilfields in Production

Name of Field		Field on stream	Operator	Production 2004 '000 barrels*
Brent	(B)	1976	Shell	5,753
Dunlin	(B)	1978	Shell	1,359
Heather	(N)	1978	Lundin Heather Ltd.	879
Ninian	(N)	1978	CNR International (UK) Ltd.	9,297
Thistle	(B)	1978	Lundin Thistle Ltd.	1,292
South Cormorant	(B)	1979	Shell	1,284
Murchison	(B)	1980	CNR International (UK) Ltd.	2,005
North Cormorant	(B)	1982	Shell	4,949
Magnus	(N)	1983	BP	13,105
Deveron	(B)	1984	Lundin Thistle Ltd.	180
Alwyn North	(B)	1987	Total E & P UK Plc.	3,342
Eider	(B)	1988	Shell	999
Tern	(B)	1989	Shell	5,858
Osprey	(B)	1991	Shell	1,111
Lyell	(N)	1993	CNR International (UK) Ltd.	886
Strathspey	(N)	1993	Chevron Texaco	3,485
Dunbar	(B)	1994	Total E & P UK Plc.	6,451
Ellon	(B)	1994	Total E & P UK Plc.	173
Hudson	(B)	1994	Dana Petroleum (E&P) Ltd.	4,604
South Magnus	(N)	1996	BP	1,570
Dunlin SW	(B)	1996	Shell	248
Pelican	(B)	1996	Shell	1,660
Merlin	(B)	1997	Shell	721
Columba E	(N)	1998	CNR International (UK) Ltd.	2,223
Schiehallion	(WoS)	1998	BP	36,010
Grant	(B)	1998	Total E & P UK Plc.	743
Columba B/D	(N)	2000	CNR International (UK) Ltd.	4,191
Loyal	(WoS)	2000	BP	5,107
Otter	(B)	2002	Fina Exploration Ltd.	9,598

(B) part of Brent pipeline to Sullom Voe

(N) part of Ninian pipeline to Sullom Voe

(WoS) West of Shetland – Schiehallion oil sent to terminal by shuttle tanker

* The current year total production in barrels has been achieved by converting the total mass for each field by an average conversion factor applicable to that field.

Source: BP Exploration Operating Co Ltd

Permanent Terminal Workforce

	1978	% local	1981	% local	1986	% local	1991	% local
SIC Marine Operations	32	66	92	63	99	72	94	71
Shetland Towage	25	80	86	88	92	93	94	100
BP	113	31	407	48	583	59	516	58
Sub-Contractors	n/a	n/a	336	41	223	68	406	56
Total Employees	170	45	921	50	997	73	1,110	62

	1996	% local	2001	% local	2003	% local	2004	% local
Ports and Harbours SIC*	98	77	106	97	93	100	94	100
Shetland Towage	73	100	71	100	64	100	66	100
BP	333	70	315	100	279	100	259	100
Sub-Contractors	195	79	514	67	204	56	281	72
Total Employees	699	77	1,006	83	640	86	700	93

Sources: BP Exploration Operating Co Ltd; Shetland Towage; Ports and Harbours, SIC and Economic Development Unit, SIC

* In 2002, Marine Operations became known as Ports and Harbours

Marine Service Base

Base	Area (ha)	Berths Operational
Shetland Base Services Ltd (Green Head, Lerwick)	16.20	9

Berthage for supply vessels is also available at Scalloway and Baltasound Harbours.

Marine Service Employment

1972	1976	1981	1986	1991	1999	2002	2003
21	185	391	318	229	177	200*	199

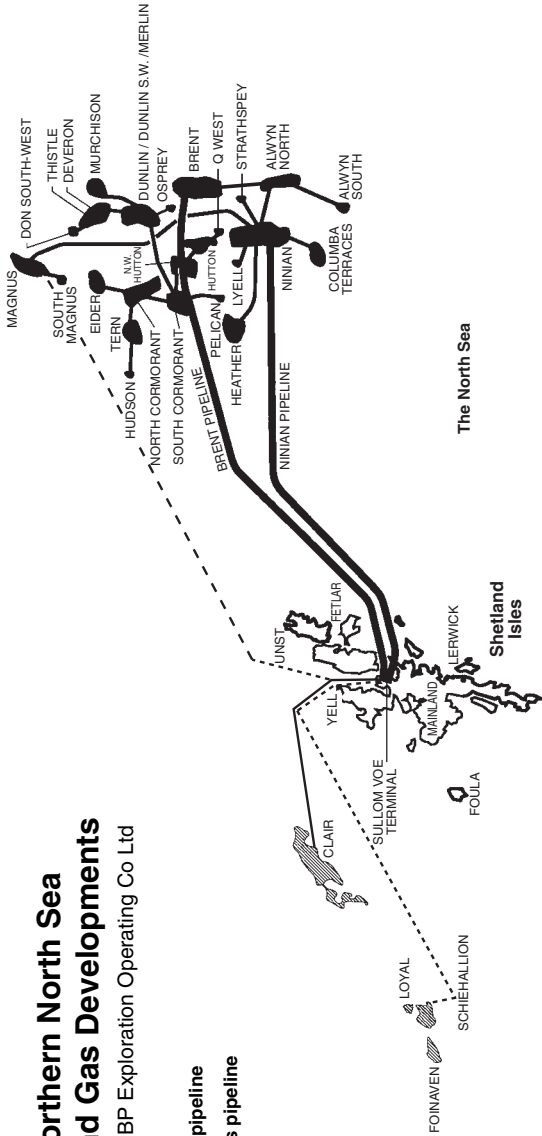
Source: Economic Development Unit, SIC

* estimate

Northern North Sea Oil and Gas Developments

Source: BP Exploration Operating Co Ltd

- Oil pipeline
- - - Gas pipeline



Cost of Living

These indices are calculated from information collected in June on the price of food, housing, transport and goods in various locations in rural Scotland. Until 2000, the Rural Scotland Price Survey was carried out by MacKay Consultants. In 2001 and 2002 this survey was carried out by Snedden Economics and Market Research, using different sampling methods and locations. Edinburgh is not covered in the survey, and Shetland is recorded as one location rather than separate rural locations. The basis for comparison has changed from Aberdeen to the Scottish Urban Average. The figures are reflected as percentages rather than actuals.

Indices	1981						1986					
	Food	Other Goods	Housing	Transport	Services	Total	Food	Other Goods	Housing	Transport	Services	Total
Shetland: Lerwick	100.6	118.0	116.0	120.7	96.1	109.7	99.6	111.9	113.6	123.0	95.1	107.9
Outer Island	n/a	n/a	n/a	n/a	n/a	n/a	n/a	n/a	n/a	n/a	n/a	n/a
Remote	116.9	129.3	112.7	132.2	95.7	119.8	108.1	123.0	109.5	140.5	91.2	114.5
Village A	108.7	122.5	115.0	123.9	96.1	114.2	110.5	120.2	110.1	130.2	92.5	113.4
Village B	113.1	126.5	116.0	124.6	94.0	117.0	113.8	124.4	113.6	130.6	93.0	116.2
Village C	112.2	122.5	117.7	126.6	97.0	116.6	110.3	120.6	114.0	131.5	93.8	114.5
Scottish Rural Average	118.3	124.0	108.6	111.5	90.0	115.1	104.7	116.8	106.9	111.6	90.1	107.3
Aberdeen	100.0	100.0	100.0	100.0	100.0	100.0	100.0	100.0	100.0	100.0	100.0	100.0
Edinburgh	n/a	n/a	n/a	n/a	n/a	n/a	103.8	99.2	101.1	97.3	100.0	100.8

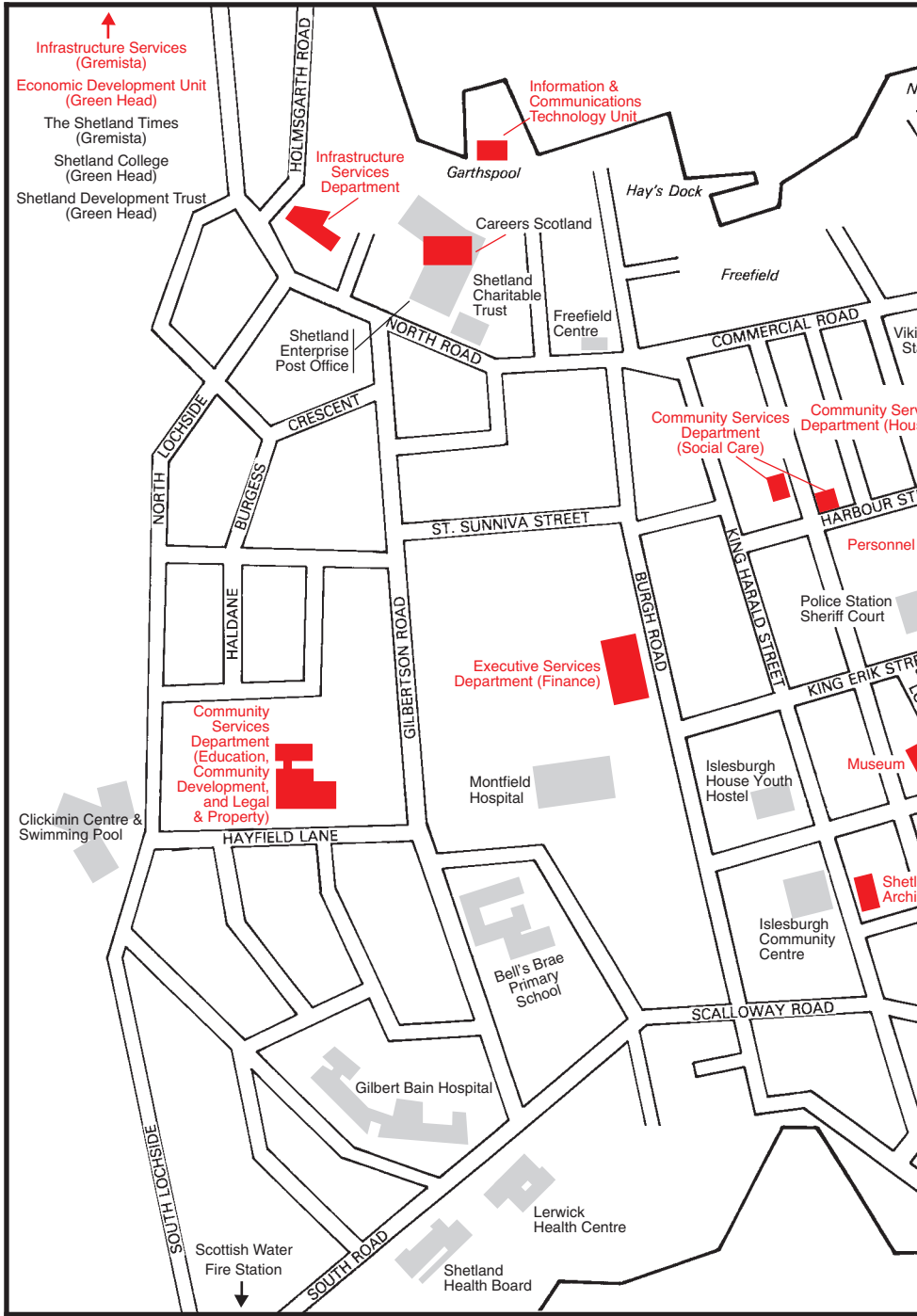
Indices	1991						1996					
	Food	Other Goods	Housing	Transport	Services	Total	Food	Other Goods	Housing	Transport	Services	Total
Shetland: Lerwick	98.7	113.4	88.9	125.6	96.7	103.8	105.5	112.6	89.5	127.5	99.5	106.6
Outer Island	107.6	120.3	88.1	133.0	92.5	107.9	114.6	120.0	88.3	135.1	92.6	110.3
Remote	112.4	125.2	87.7	140.3	92.8	111.6	110.5	126.1	87.6	140.3	93.5	111.5
Village A	111.3	116.0	86.3	135.1	93.0	108.1	111.3	116.4	86.9	136.1	93.5	108.7
Village B	109.6	124.8	86.9	136.0	93.1	110.0	115.6	122.4	87.4	136.8	93.3	111.3
Village C	112.1	122.2	86.3	136.4	94.2	110.1	113.4	124.0	86.9	136.1	94.2	111.1
Scottish Rural Average	104.9	116.0	87.3	115.4	90.1	103.2	107.4	114.7	86.4	112.5	91.6	103.1
Aberdeen	100.0	100.0	100.0	100.0	100.0	100.0	100.0	100.0	100.0	100.0	100.0	100.0
Edinburgh	104.7	98.1	116.5	96.4	103.5	104.5	102.6	97.1	115.0	96.3	103.6	102.9

Indices	1998						1999					
	Food	Other Goods	Housing	Transport	Services	Total	Food	Other Goods	Housing	Transport	Services	Total
Shetland: Lerwick	100.1	112.0	89.5	126.6	99.1	104.9	99.6	111.6	89.1	125.6	99.2	104.6
Outer Island	106.3	119.6	88.0	133.8	92.5	107.9	109.5	119.3	88.2	133.8	92.6	108.9
Remote	117.1	126.0	87.3	140.3	93.2	113.0	110.9	126.2	87.2	139.9	93.2	111.7
Village A	111.7	115.5	87.0	135.0	93.4	108.4	109.0	115.5	86.8	134.7	93.4	107.9
Village B	121.5	121.7	88.1	136.1	93.7	112.7	118.2	121.5	88.3	136.3	93.6	112.1
Village C	117.6	124.5	86.7	135.4	94.1	112.0	111.0	124.0	86.7	135.3	94.0	110.5
Scottish Rural Average	109.5	114.4	86.5	112.9	91.4	103.6	106.7	114.2	86.5	112.8	91.5	102.9
Aberdeen	100.0	100.0	100.0	100.0	100.0	100.0	100.0	100.0	100.0	100.0	100.0	100.0
Edinburgh	103.1	97.5	115.6	96.3	104.1	103.4	100.1	97.6	115.3	96.5	104.4	102.6


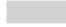
Source: Rural Scottish Summer Price Survey, MacKay Consultants

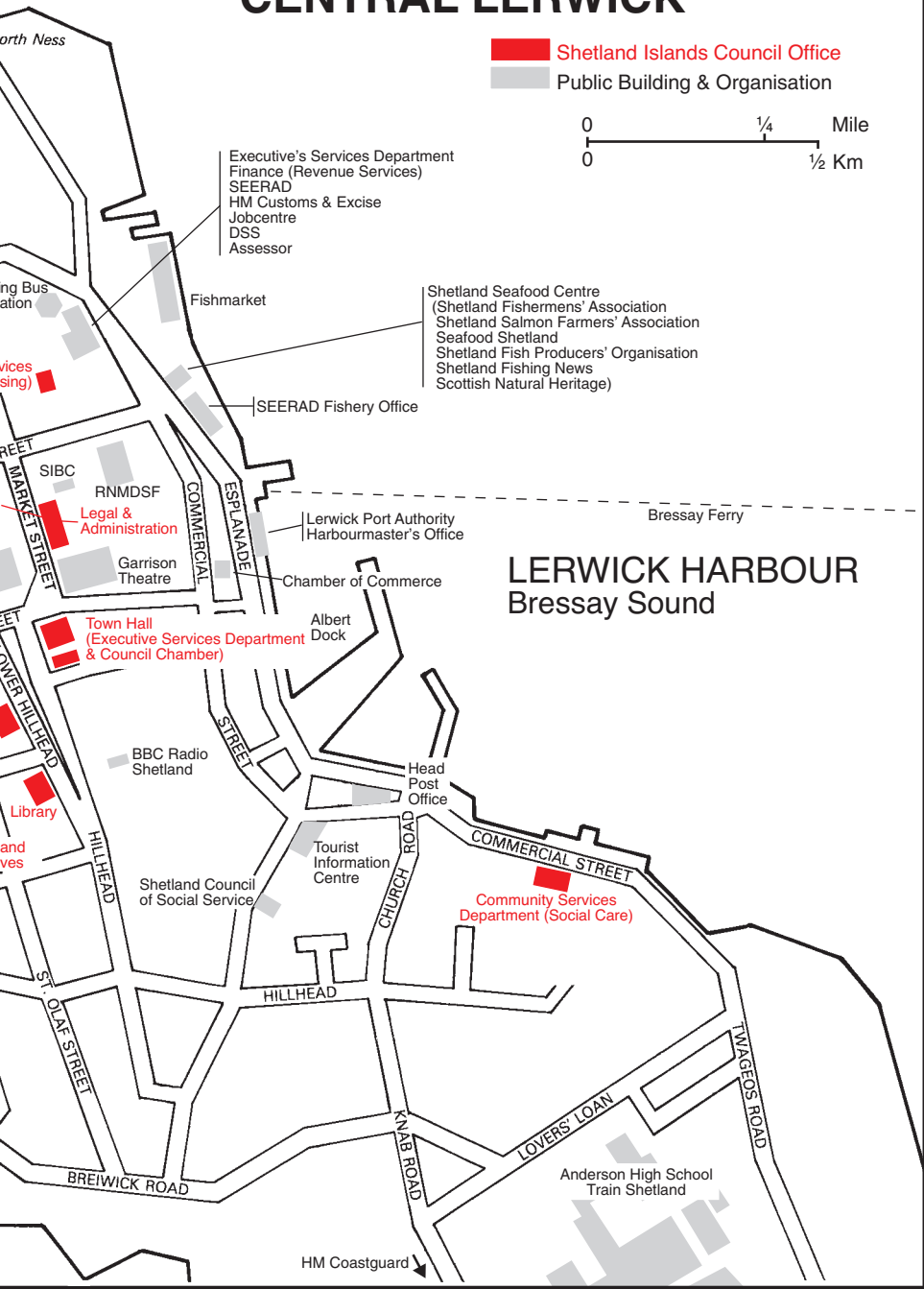
Indices	2002						2003					
	Food	Housing	Other Goods and Services	Motoring Expenditure	Road Fuel	Total	Food	Housing	Other Goods and Services	Motoring Expenditure	Road Fuel	Total
Shetland	115.3	97.1	103.8	99.7	114.9	105.5	117.0	83.4	104.2	92.1	95.7	100.3
All Scotland	106.4	92.0	101.6	98.6	105.3	100.7	108.2	86.2	99.3	84.3	106.3	97.7
Scot. Urban Av.	100.0	100.0	100.0	100.0	100.0	100.0	100.0	100.0	100.0	100.0	100.0	100.0
Aberdeen	102.7	94.0	98.6	102.9	99.4	99.0	102.7	88.1	98.9	92.9	101.9	96.8
Orkney	115.5	86.8	95.2	96.7	111.2	101.3	119.0	79.2	93.5	84.3	94.5	96.4
Western isles	115.1	91.3	103.8	98.7	112.1	103.7	121.2	81.1	102.6	91.6	95.2	99.9

Source: Rural Scotland Expenditure Survey, Snedden Economics and Market Research



CENTRAL LERWICK

 Shetland Islands Council Office
 Public Building & Organisation



Executive's Services Department
 Finance (Revenue Services)
 SEERAD
 HM Customs & Excise
 Jobcentre
 DSS
 Assessor

Fishmarket

Shetland Seafood Centre
 (Shetland Fishermen's Association
 Shetland Salmon Farmers' Association
 Seafood Shetland
 Shetland Fish Producers' Organisation
 Shetland Fishing News
 Scottish Natural Heritage)

SEERAD Fishery Office

Legal & Administration

Lerwick Port Authority
 Harbourmaster's Office

Bressay Ferry

LERWICK HARBOUR
 Bressay Sound

Chamber of Commerce

Albert Dock

Town Hall
 (Executive Services Department
 & Council Chamber)

BBC Radio Shetland

Head Post Office

Tourist Information Centre

Community Services Department (Social Care)

Shetland Council of Social Service

Anderson High School
 Train Shetland

HM Coastguard

Internal Transport

Internal Air and Sea Transport Infrastructure

Location	Type of Transport	Type of Service*	Surface Type and Dimensions of Airstrip
Unst	Air/SIC Vehicle Ferry		Bituminous (640x28m)
Yell	SIC Vehicle Ferry		
Fetlar	Air/SIC Vehicle Ferry	Air = Charter only	Soft Gravel (457x18m)
Skerries	Air/SIC Vehicle Ferry		Rolled Gravel (Firm) (381x18m)
Whalsay	Air/SIC Vehicle Ferry	Air = Charter only	Rolled Gravel (Firm) (457x18m)
Scatsta	Air	Air = Charter only	Bituminous (960x28m)
Bressay	SIC Vehicle Ferry		
Tingwall	Air		Bituminous (740x18m)
Sumburgh	Air		Tarmac (1,084x46m) Tarmac (1,426x46m) Tarmac (550x45m)
Fair Isle	Air/SIC Ferry		Rolled Gravel (Firm) (457x18m)
Papa Stour	Air/SIC Ferry		Soft Gravel (457x18m)
Foula	Air/SIC Ferry		Soft Gravel (457x18m)

* All SIC vehicle ferries operate on both a charter and scheduled basis.

Air services operate similarly, except where stated.

All internal air services are operated by Loganair Ltd.

Source: Department of Infrastructure Services, SIC

Inter Island Ferries

Shetland Islands Council Ferry Traffic

Passengers

Ferry Route	1976	1986	1991	1996*	2001	2003	2004
Yell	62,626	96,364	113,897	193,186	192,661	221,923	231,249
Unst/Fetlar	33,460	40,605	65,608	112,852	110,688	129,452	145,350
Bressay	71,615	96,849	135,447	219,619	180,675	194,512	212,957
Whalsay	23,110	45,888	67,385	144,606	138,327	141,497	154,350
Total	190,811	279,706	382,337	670,263	622,351	687,384	743,906

Vehicles

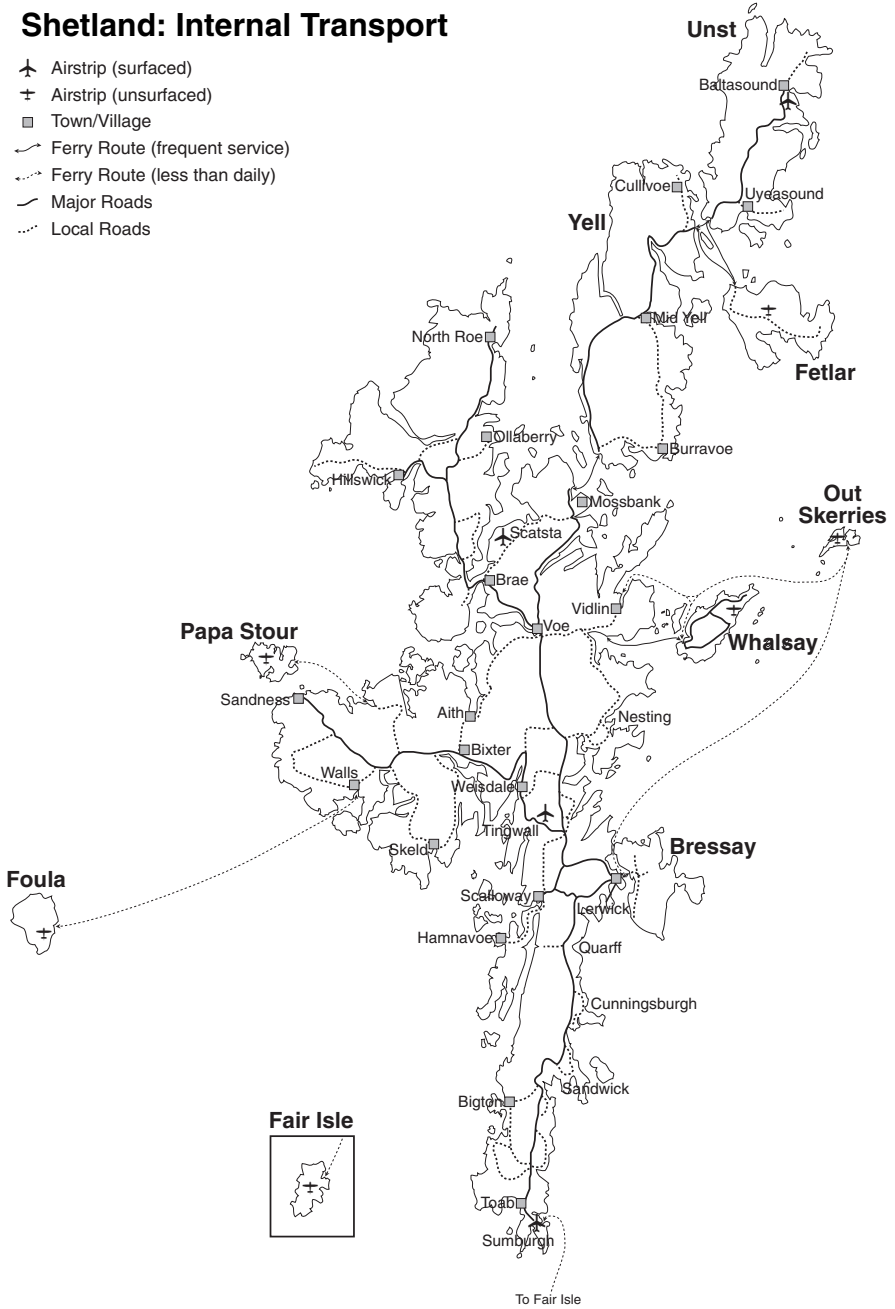
Ferry Route	1976	1986	1991	1996*	2001	2003	2004
Yell	33,333	65,264	89,041	97,180	100,889	117,130	123,604
Unst/Fetlar	16,920	28,202	51,816	52,034	56,459	67,246	79,808
Bressay	14,817	31,958	50,272	66,612	58,829	68,782	71,230
Whalsay	10,117	31,660	48,911	64,212	62,748	66,373	72,885
Total	75,187	157,084	240,040	280,038	278,925	319,531	347,527

* Prior to 1995 the fare gathering system did not record non-fare paying vehicles and passengers.

Source: Department of Infrastructure Services, SIC

Shetland: Internal Transport

- ✈ Airstrip (surfaced)
- ✈ Airstrip (unsurfaced)
- ▣ Town/Village
- ↔ Ferry Route (frequent service)
- ⋯ Ferry Route (less than daily)
- Major Roads
- ⋯ Local Roads



Overland Transport

Bus Services

Route	Operator	Passengers		
		2001	2002	2003
Lerwick to: South Mainland (Sandwick/Sumburgh/ Sumburgh Airport)	J Leask & Son	92,758	91,941	93,797
	North Mainland (Hillswick/Mossbank/Toft)	} 73,240	74,141	71,116
	Johnson Transport			
Laxo/Vidlin (for Whalsay)	White's Coaches	6,977	7,468	7,881
West Mainland (Walls/Skeld/ Reawick/Aith)	J Leask & Son	44,018	45,533	41,982
	Scalloway/Burra	J Leask & Son	42,154	48,983
Lerwick Town Service	J Leask & Son	117,639	115,916	113,039
Yell Services	R G Jamieson	} 4,936	4,788	4,653
	H Sinclair & Co			
Unst Services	P & T Coaches	1,638	1,536	1,950
Total		383,360	390,306	388,720

Schedule of County Roads

A Class Roads	224.6km (139.6 miles)
B Class Roads	161.7km (100.5 miles)
C Class Roads	198.5km (123.4 miles)
Unclassified Roads	459.9km (285.8 miles)
Total	1,044.7km (649.2 miles)

Sources: Department of Infrastructure Services, SIC and John Leask & Son

Vehicle Ownership

Vehicles licensed in Shetland on 31 December

Type	1976	1981	1986	1991	1996	2001	2002	2003	2004
Private Cars & Light Goods	5,076	7,048	7,808	8,933	10,031	10,806	11,135	11,430	11,697
Goods/Agricultural Vehicles	640	801	376	310	231	251	271	260	251
Public Transport Vehicles	171	164	187	121	88	81	74	73	75
Motor Cycles	397	545	379	287	251	271	318	345	375
Miscellaneous	826	831	966	967	889	992	1,037	1,083	1,128
Total	7,110	9,389	9,716	10,618	11,490	11,932	12,401	12,835	13,526

Sources: 1976: Local Taxation Office

1981 onwards: Department of the Environment, Transport and the Regions

External Ferries

Ferry Services: Passengers and Accompanied Cars Aberdeen – Lerwick

		Passenger Journeys	Accompanied Car Journeys
1971		22,693	n/a
1981		52,531	8,398
1986		63,323	9,788
1991		80,346	11,350
1995		60,669	11,073
1996		62,561	11,734
1998		60,938	11,254
1999		62,170	11,521
2002 *		11,644	2,827
2003		81,185	14,918
2004	January	4,297	778
	February	2,989	607
	March	6,014	1,048
	April	7,970	1,326
	May	7,967	1,382
	June	11,071	1,953
	July	15,393	2,409
	August	13,752	2,077
	September	8,214	1,530
	October	9,025	1,454
	November	5,480	976
	December	5,752	970
	Total	97,924	16,510

Note: Each passenger and car journey is counted one way

* In 2002 the only figures available were for October, November and December

Freight Services Aberdeen – Lerwick

	1981	1986	1991	1996	1998	1999
Commercial Vehicles	24,327	14,368	10,899	12,038	12,715	12,006
Commercial Trailers	26,959	25,745	56,255	64,244	86,049	79,468
Unaccompanied Cars	3,941	4,512	5,383	6,213	5,934	6,184

Figures expressed in metres

Source: P&O Scottish Ferries, Northlink

Lerwick Harbour

Shipping in Lerwick Harbour

	1971	1981	1986	1991	1996	2001	2003	2004
General	316	418	625	738	662	796	1,254	1,136
Oil Tankers	51	140	105	114	127	105	90	92
Oil Rig Tenders	79	1,556	1,033	888	737	319	179	251
Other Vessels	489	{ 430	486	522	611	2,936	1,370	1,103
Yachts		{ 112	203	366	317	415	440	412
British Fishing*	1,440	677	1,762	1,606	1,099	809	637	2,044
Foreign Fishing	1,580	246	509	216	127	103	207	157
Total	3,955	3,579	4,723	4,450	3,680	5,483	4,177	5,195

* Excludes local fishing fleet

Tonnage Handled in Lerwick Harbour

	1971	1981	1991	2001	2003	2004
General Cargo Imports	45,760	200,077	226,715	409,088	413,743	395,997
General Cargo Exports	48,849	57,471	98,335	325,055	430,811	401,593
Oil Related Imports	342	288,999	238,684	211,681	11,454	10,118
Oil Related Exports	0	421,807	315,996	203,685	16,464	20,868
Total	94,951	968,354	879,730	1,149,509	872,472	828,577

Weight of containers excluded

Foreign Fishing Vessels in Lerwick Harbour

	1971	1981	1986	1991	1996	2001	2003	2004
Angola	0	0	0	0	2	0	0	0
Belgium	0	0	0	0	1	0	0	0
Bulgaria	0	0	3	6	0	0	0	0
CIS (formerly USSR)	60	0	39	1	0	1	1	2
Cyprus	0	0	0	0	0	0	1	0
Denmark	374	117	82	66	46	23	91	35
Dominica	0	0	0	0	0	0	0	1
Faroe	242	14	3	19	6	6	5	10
Finland	6	0	0	0	0	0	0	0
France	16	13	13	18	4	8	8	3
Germany (formerly E and W)	3	1	14	22	10	8	7	10
Greenland	0	0	0	0	0	1	0	0
Iceland	215	2	9	0	0	0	4	1
Ireland	0	0	18	20	12	20	65	63
Netherlands	12	0	16	7	3	1	0	0
Norway	551	96	306	50	43	30	15	28
Poland	1	2	0	0	0	0	0	2
Portugal	0	0	1	0	0	0	1	0
Sweden	100	1	5	7	0	5	9	0
Togo	0	0	0	0	0	0	0	2
Total	1,560	246	509	216	127	103	207	157

Fish Factory Ships and Related Vessels in Lerwick Harbour

1983	1986	1991	1996	2001	2002	2003	2004
41	219	230	249	5	4	2	1

Lerwick Harbour Trust Revenue (£)

1971	1981	1991	2001	2002	2003	2004
49,000	2,100,000	4,576,082	5,761,631	5,870,630	6,102,511	6,061,281

Source: Lerwick Port Authority

Scalloway Harbour

Shipping in Scalloway Harbour

	1986	1991	1996	2000	2001	2002	2003	2004
UK Commercial	11	0	29	47	61	84	37	91
Foreign Commercial	100	103	147	103	158	146	148	92
Oil-related	5	1	8	21	37	12	13	7
UK Fishing	163	207	127	74	68	91	42	36
Foreign Fishing	17	28	19	15	12	26	16	9
Yachts	9	33	9	5	1	0	6	4
Salmon Cages	0	0	0	21	87	30	19	33
SIC Vessels	0	0	9	9	15	10	29	8
Other	0	0	42	19	46	53	63	95
Total	305	372	381	314	485	452	373	375

Cargo Handling (tonnes)

	1986	1991	1996	2001	2003	2004
Imports	5,037	6,351	11,533	20,405	21,652	18,195
Exports	16,120	893	14,087	25,616	48,244	29,594

Scalloway Harbour Revenue (£)

1986/87	1991/92	1996/97	2000/01	2001/02	2003/04	2004/05
160,838	202,598	359,773	218,086	313,086	193,308	234,911

Source: Ports and Harbours, SIC

Air Services

Total Aircraft Traffic at Sumburgh, Scatsta, Unst and Tingwall

	1981	1986	1991	1996	2000	2001	2003	2004
Passengers	784,545	367,053	588,625	524,476	367,001	386,844	344,944	357,970
Aircraft Movements	52,863	29,457	39,863	34,122	24,111	24,896	18,350	22,014

Employment

	1981	1986	1991	1996	1998	1999	2003
Sumburgh	650	206	296	235	199	191	163
Tingwall	12	10	8	6	3	3	3
Scatsta	42	10	11	58	60	60	90
Unst	68	66	42	10	6	5	0
Total	772	292	357	309	268	259	256

Source: Highlands & Islands Airports Ltd., Department of Infrastructure Services, SIC

Sumburgh Airport Traffic: Passengers

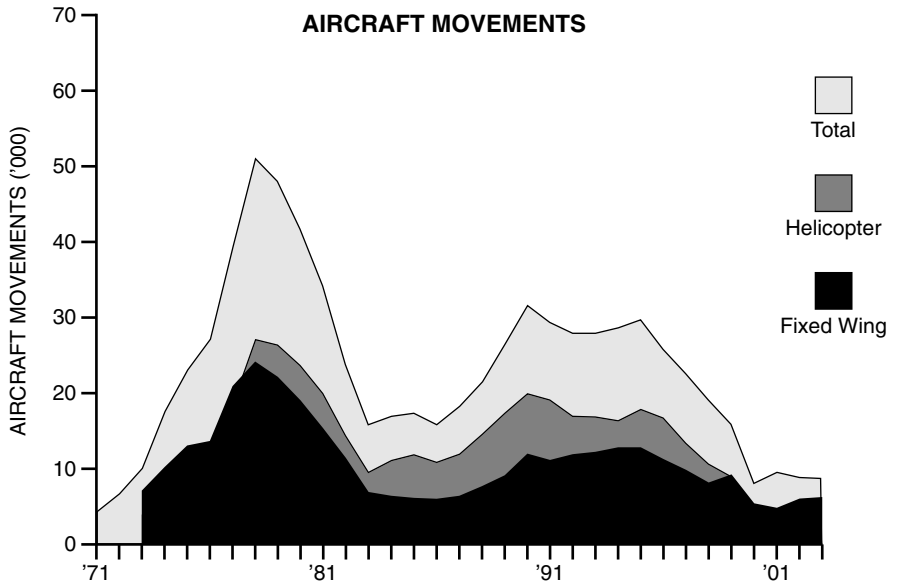
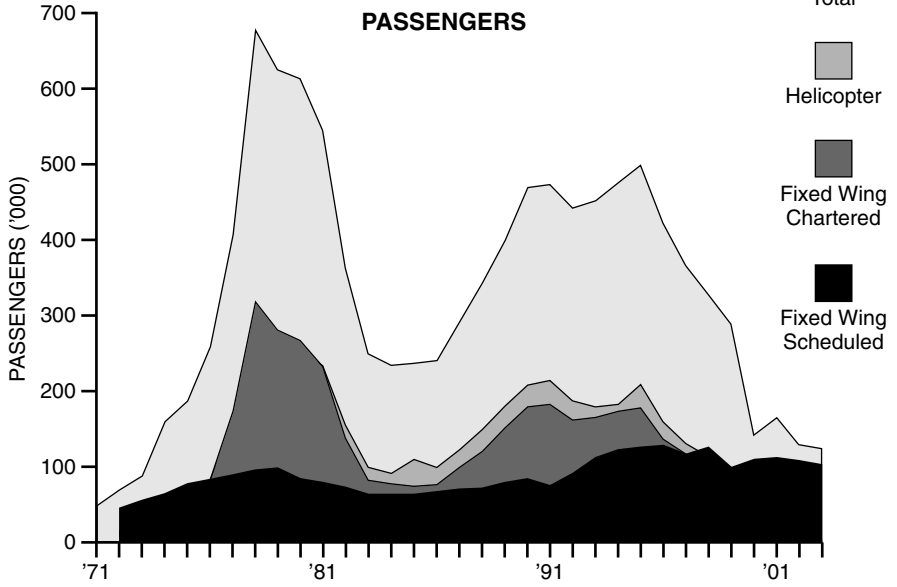
	Total Passengers	Fixed Wing Scheduled Passengers	Charter Passengers and Others	Helicopter Passengers
1971	46,994	n/a	n/a	n/a
1976	250,778	78,654	84,111	88,013
1978	685,492	90,601	323,151	271,740
1981	541,761	76,853	232,389	232,519
1986	239,744	63,200	77,805	98,739
1991	473,626	76,841	182,377	214,408
1996	423,476	125,744	137,384	160,348
2001	168,281	112,146	14,824	41,311
2003	127,865	105,530	4,413	17,922
2004	123,163	103,001	4,888	15,274

Sumburgh Airport Traffic: Aircraft Movements and Freight

	Total	Fixed Wing	Helicopter	Freight (kgs)
1971	3,895	n/a	n/a	440,000
1976	25,694	13,030	12,664	1,574,338
1978	50,666	23,843	26,823	1,950,287
1981	34,188	14,361	19,827	3,487,834
1986	15,968	5,621	10,347	1,409,284
1991	29,168	10,321	18,847	1,448,769
1996	25,350	10,202	15,148	1,611,102
2001	11,165	5,635	5,530	981,475
2003	8,787	5,811	2,976	1,046,013
2004	8,753	6,016	2,737	1,073,614

Source: Highlands & Islands Airports Ltd.

Sumburgh Airport



UK Airport Passengers ('000)

	1991	1996	2001	2003	2004
Heathrow	40,245	55,732	60,675	63,495	67,343
Gatwick	18,690	24,102	31,182	30,005	31,467
Manchester	10,102	14,485	19,307	19,699	21,250
Stansted	1,685	4,810	13,665	18,722	20,911
Birmingham	3,246	5,353	7,809	9,079	8,862
Glasgow	4,154	5,472	7,292	8,130	8,575
Edinburgh	2,340	3,810	6,067	7,481	8,018
Luton	1,958	2,411	6,555	6,797	7,536
Newcastle	1,527	2,433	3,413	3,920	4,724
Bristol	783	1,394	2,694	3,915	4,647
Belfast International	2,168	2,351	3,619	3,977	4,407
East Midlands	1,145	1,822	2,387	4,259	4,381
Liverpool	457	620	2,253	3,177	3,353
Aberdeen	2,020	2,377	2,529	2,510	2,636
Leeds Bradford	172	726	1,619	2,018	2,368
Prestwick	35	522	1,240	1,859	2,163
Belfast City	537	1,361	1,193	1,975	2,091
Cardiff	513	1,010	1,544	1,919	1,888
London City	638	1,053	1,530	1,471	1,675
Southampton	428	551	858	1,219	1,531
Jersey	1,666	1,691	1,560	1,495	1,527
Guernsey	784	891	911	905	945
Teesside	300	444	734	704	788
Isle of Man	473	605	707	761	774
Exeter	164	205	344	395	622
Inverness	199	285	364	459	551
Humberside	108	279	435	518	531
Bournemouth	125	162	266	465	499
Coventry	6	3	1	2	462
Norwich	175	258	390	449	448
Newquay	–	–	–	–	278
Blackpool	120	85	81	187	266
Londonderry	37	64	186	206	235
Scatsta	15	79	247	230	229
Isles of Scilly (St. Marys)	102	125	133	141	144
Penzance Heliport	97	106	128	131	129
Plymouth	85	98	172	89	129
Stornoway	80	94	88	107	112
Kirkwall	102	92	94	111	111
Sumburgh	433	401	137	113	110
Kent International	4	2	6	4	101
Alderney	83	84	72	72	74
Dundee	9	13	49	52	51
Isles of Scilly (Tresco)	21	26	40	46	46
Benbecula	31	38	34	32	30
Hawarden	1	–	3	9	29
Lands End (St Just)	–	–	–	25	26
Wick	31	28	26	25	25
Islay	20	19	20	21	21
Swansea	–	–	–	–	19
Campbeltown	–	7	8	8	9
Barra	–	8	9	8	9
Tiree	5	5	5	5	6
Lydd	30	–	1	4	4
Shoreham	1	3	1	0.05	4
Cambridge	26	29	18	3	3
Southend	21	6	4	3	3
Tingwall	11	4	2	2	2
Biggin Hill	–	6	4	0.6	0.7
Unst	85	18	0.25	–	–
Total: All UK airports	98,301	138,665	184,744	203,178	219,179

Source: Civil Aviation Authority

Scatsta Airport Traffic

	1981	1986	1991	1996	2001	2003	2004
Passengers	109,063	13,157	14,495	78,807	247,131	229,558	228,843
Aircraft Movements	5,758	2,232	630	4,461	11,223	9,888	10,958

Tingwall Airport Traffic

	1981	1986	1991	1996	2001	2003	2004
Passengers	12,180	13,368	15,453	4,382	4,747	6,317	5,964
Aircraft Movements	2,815	3,333	2,917	2,582	2,394	2,384	2,303

Source: Department of Infrastructure Services, SIC

Unst Airport Traffic

	1981	1986	1991	1996	2001	2003	2004
Passengers	120,564	97,138	85,051	17,848	252	–	–
Aircraft Movements	10,040	8,592	7,148	1,786	138	–	–

Source: Civil Aviation Authority

Small Airfield Traffic

Passengers

Airfield	1981	1986	1991	1996	2001	2002	2003	2004
Fair Isle	841	1,822	2,048	1,910	2,030	2,243	2,248	2,419
Fetlar	57	60	n/a	n/a	n/a	n/a	n/a	n/a
Foula	1,175	1,100	n/a	1,344	1,296	1,378	1,720	1,402
Papa Stour	n/a	n/a	n/a	n/a	238	302	448	386
Skerries	271	624	900	545	840	1,000	1,024	837
Whalsay	80	100	360	n/a	n/a	n/a	n/a	n/a
TOTAL	2,424	3,706	3,308	3,799	4,404	4,923	5,440	5,044

Aircraft Movements

Airfield	1981	1986	1991	1996	2001	2002	2003	2004
Fair Isle	238	480	610	632	605	642	635	583
Fetlar	52	40	n/a	n/a	n/a	n/a	n/a	n/a
Foula	310	304	466	687	492	523	542	507
Papa Stour	n/a	n/a	n/a	n/a	155	174	219	181
Skerries	138	302	400	408	570	546	476	456
Whalsay	78	70	200	n/a	n/a	n/a	n/a	n/a
TOTAL	816	1,196	1,676	1,727	1,822	1,885	1,872	1,727

Sources: Loganair

Education and Training

Staffing

	1971	1976	1981	1986	1991	1996	2001	2003	2004*
Nursery Teachers	—	—	—	—	—	11	16	18	19
Primary Teachers	91	117	164	150	140	177	300	286	317
Secondary Teachers	88	124	142	162	189	198	232	225	291
Further Education Lecturers	2	4	9	13	18	47	61	49	57
Total	181	245	315	325	347	433	609	578	684

From 1996 FE lecturers include North Atlantic Fisheries College lecturers

* Figures include visiting or part-time teachers/instructors

Further Education

Students Enrolled on Shetland College Courses

	1971	81/82	86/87	91/92	96/97	01/02	02/03	03/04
Full Time	20	68	113	77	141	173	138	163
Part Time	20	54	62	36	1,627	1,810	2,352	2,649
Evening Class	557	1,171	1,387	1,336	1,072	1,063	207	720
S.Seekers/M.Apprentices	—	—	43	101	42	7	12	177
Total	597	1,293	1,605	1,550	2,882	3,053	2,709	3,709

Source: Shetland College of Further Education, Education & Community Services Dept., SIC

Students Enrolled on North Atlantic Fisheries College Courses

	1992	1993	1994	1996	2001	2002	2003	2004
Business Courses	0	19	19	21	10	11	14	7
Aquaculture Courses	9	24	13	25	30	24	16	24
Fisheries Science	0	0	0	10	0	4	45	11
Marine Engineering	25	24	50	68	80	132	69	96
Maritime Studies	79	180	264	381	333	362	526	589
Processing Courses	0	0	46	24	143	36	51	36
Courses run by Third Parties	131	321	267	243	321	270	148	218
Total	244	568	659	772	917	839	869	981

Source: North Atlantic Fisheries College

Secondary Education

School Roll	1971	1976	1981	1986	1991	1996	2001	2004	2005
Aith Junior High	35	65	61	61	61	70	83	94	86
Anderson High	571	770	915	933	878	855	820	861	876
Baltasound Junior High	36	58	75	47	33	55	37	37	48
Brae High	47	68	164	263	211	242	265	253	236
Mid Yell Junior High	43	58	48	56	44	55	47	42	54
Sandwick Junior High	55	87	121	130	144	166	173	171	183
Scalloway Junior High	72	129	132	144	179	153	129	109	114
Skerries School	2	6	5	7	2	2	7	3	2
Symbister House Junior High	36	54	62	49	45	50	70	64	67
Total	897	1,295	1,583	1,690	1,597	1,648	1,631	1,634	1,666

Primary Education

School Roll	1971	1976	1981	1986	1991	1996	2001	2004	2005
Aith Junior High	67	63	52	77	61	58	90	94	98
Baltasound Junior High	103	100	106	71	85	72	54	60	47
Bell's Brae Primary	722	790	501	416	357	383	349	354	306
Bell's Brae Special	–	–	–	–	–	–	27	26	30
Brae High	44	68	171	170	139	152	105	102	121
Bressay Primary	24	38	20	21	28	40	42	39	34
Burra Primary	16	–	–	–	–	–	–	–	–
Burravoe Primary	38	31	36	29	32	26	19	14	5
Cullivoe Primary	21	23	24	24	18	15	12	12	12
Cunningsburgh Primary	56	74	77	59	50	60	59	69	66
Dunrossness Primary	123	152	209	149	146	155	138	127	132
Fair Isle Primary	3	9	11	8	8	5	17	11	11
Fetlar Primary	14	6	15	9	7	13	4	5	5
Firth Primary	16	–	–	–	–	–	–	–	–
Foula Primary	4	4	7	7	4	5	2	5	2
Gott Primary	41	43	52	50	50	39	62	62	54
Gruting Primary	12	11	9	–	–	–	–	–	–
Hamnavoe Primary	64	65	107	110	96	78	63	59	58
Happyhansel Primary	43	40	48	55	57	58	48	50	51
Haroldswick Primary	38	33	21	30	25	14	–	–	–
Lunnasting Primary	20	22	38	26	21	26	31	28	29
Mid Yell Junior High	56	76	65	53	48	47	49	48	47
Mossbank Primary	–	–	136	117	70	85	73	66	72
North Roe Primary	17	16	23	17	20	22	12	11	14
Ollaberry Primary	18	12	16	29	36	27	22	23	23
Olnafirth Primary	19	30	46	44	31	29	28	27	26
Papa Stour Primary	–	–	5	3	4	0	2	1	2
Quarff Primary	17	19	23	21	15	10	12	n/a	n/a
Sandness Primary	6	7	15	21	13	17	12	10	14
Sandwick Junior High	44	81	96	65	69	86	86	94	99
Scalloway Junior High	120	136	150	138	117	96	83	89	95
Skeld Primary	13	26	36	19	14	24	18	21	23
Skerries Primary	16	12	11	8	9	8	4	4	4
Sound Primary	–	–	292	400	354	338	339	283	280
South Nesting Primary	16	14	26	21	11	14	29	26	25
Symbister House Junior High	125	149	146	121	125	110	98	105	105
Urafirth Primary	26	29	37	33	29	28	29	24	23
Uyeasound Primary	21	27	16	8	9	21	17	10	6
Whiteness Primary	31	56	87	68	85	100	89	91	98
Total	2,014	2,262	2,730	2,505	2,243	2,261	2,124	2,050	2,017

Nursery Education

School Roll (January)	1981	1991	1996	2001	2004	2005
Aith Junior High	0	0	14	22	18	18
Baltasound Junior High	0	0	0	15	6	10
Bell's Brae	0	64	75	44	36	47
Brae High	51	60	40	27	23	29
Bressay	0	0	0	8	6	3
Dunrossness	0	33	31	25	23	27
Fair Isle	0	0	0	0	1	0
Fetlar	0	0	0	1	0	0
Foula	0	0	0	1	0	0
Happyhansel	0	0	17	13	19	15
Mid Yell	0	0	0	16	25	21
Mossbank	0	23	29	17	20	15
Sandwick Junior High	0	38	30	26	35	23
Scalloway Junior High	0	0	0	18	19	18
Skeld	0	0	0	7	7	6
Skerries	0	0	0	1	0	1
Sound	60	60	58	40	58	55
Symbister House Junior High	0	0	19	19	24	31
Urafirth	0	0	10	8	11	15
Whiteness	0	0	0	17	11	12
Total	111	278	323	325	343	346

Source: Department of Education & Community Services, SIC

Social Work Provision

The following services are provided by Shetland Islands Council Social Work Services except where stated otherwise:

	1996/97	2001/02	2003/04
Local Authority Beds for Older People	53	56	56
Voluntary Sector Beds for Older People*	66	86	86
Day Care Places for Older People**	58	86	86
Places in Hostel for Adults with Learning Disabilities	16	5	5
Independent Living for Adults with Learning Disabilities	–	20	20
Places in Children's Homes	5	5	5
Places for Mentally/Physically Disabled Children – Respite Care	6	6	6
Laundries	4	4	4
Meals on Wheels Schemes	27	24	24
Luncheon Clubs	3	2	3
Meals Delivered	41,292	40,585	43,510
Home Helps	246	287	200
Home Help Clients	538	518	490
Community Care Support Clients***	52	55	55
Homes Connected to Community Alarm System	614	731	745

* Voluntary sector beds for older people are provided by the Shetland Welfare Trust and the Church of Scotland.

** Shetland Welfare Trust care centres provide up to 66 of the day care places for older people.

*** Community Care Support Services are provided by the Shetland Welfare Trust. This service provides support to clients in order to allow them to remain living in their own home.

The Departments of Community Services and Corporate Services jointly manage one scheme of sheltered housing providing 10 places for people who are mentally ill and one scheme of very sheltered housing (16 units) for people aged 60 or over.

Source: Department of Social Work, SIC

Health

Health services in Shetland are provided by Shetland Health Board, which in 2003/04 received a grant of £33,500,000 from the Scottish Executive. 2004/05's allocation is £35,000,000. The Board maintains close links with Grampian Health Board for the provision of specialist services not available in Shetland.

Health Board Expenditure (£ per head of population)

	1986/87	1991/92	1996/97	2001/02	2003/04
Shetland	312	675	862	1,356	1,520
Scottish average	392	695	813	1,087	1,268

Staffing

	1986	1991	1996	2001	2004
Hospital – medical and dental	12	15	14	19	25
Hospital nursing staff	152	206	193	165	168
Scientific and professional, PAMS and technical	37	37	52	77	104
Administration and clerical	43	59	72	73	132
Works, trades and ancillary	102	110	10	9	11
General medical practitioners	20	20	24	22	25
Other nursing staff	42	45	47	47	62
Dental practitioners	4	7	8	8	12

Hospital Activity

Discharges/Attendances	1986/87	1991/92	1996/97	2001/02	2003/04
In Patients (all specialities)	2,015	2,105	2,411	2,898	2,536
Day cases	801	974	1,119	1,332	1,243
Accident and Emergency out patients	2,817	7,212	7,608	8,972	8,036
Total out patients (incl A and E)	10,630	18,459	19,768	23,965	24,420

Source: Information & Statistics Division, National Health Service in Scotland

Housing

Ownership of dwellinghouses in Shetland

Type of Dwelling	1976	1981	1991	1996	2001	2002	2003	2004
Local Authority & Housing Association	2,082	2,713	2,566	2,455	2,543	2,565	2,324	2,362
Private and others	5,205	5,899	6,590	7,110	7,334	7,812	7,758	7,733
Total	7,287	8,612	9,156	9,565	9,877	10,377	10,082	10,095

Source: Assessor & Electoral Registration Office, Lerwick

Leisure Facilities

Leisure Centres

	1991/92	1996/97	2001/02	2003/04	2004/05
Clickimin	160,411	191,054	217,308	215,555	224,217
South Mainland	—	—	15,406	17,721	19,533
Scalloway	—	—	18,796	22,141	20,822
Whalsay	58,820	49,679	43,961	39,331	38,014
Yell	38,649	37,356	34,289	32,593	38,458
Unst	52,541	49,127	32,972	23,511	24,412
North Mainland	—	—	20,948	32,261	37,145
West Mainland	—	—	—	37,044	39,721

Swimming Pools

	1991/92	1996/97	2001/02	2003/04	2004/05
Lerwick	133,249	177,129	186,637	207,551	201,883
South Mainland	—	32,925	17,074	10,121	13,592
Scalloway	—	33,850	26,944	18,677	20,426
Whalsay	20,928	14,842	14,337	11,773	11,532
Yell	8,393	6,875	7,798	5,495	5,915
Unst	11,789	9,438	10,599	5,857	6,652
North Mainland	43,551	28,369	19,728	9,909	11,017
West Mainland	—	—	—	10,113	8,951

Source: Shetland Recreational Trust

Community Halls and Community Centres (by community work area)

North Isles	Sullom and Gunnister Hall Brae Hall	Symbister Hall – Whalsay Isbister Hall – Whalsay Skerries Hall	Bressay Hall
North Unst (Haroldswick) Hall	Muckle Roe Hall		Youth Centres
Baltasound Hall – Unst	Lunnasting Hall		Unst Youth Centre
South Unst (Uyeasound) Hall	Olnafirth Hall	South Mainland	Germatwatt (Walls) Youth Centre
Cullivoe Hall – Yell		Gulberwick Hall	Scalloway Youth Centre
Sellafrith Hall – Yell	West & Central Mainland	Quarff Hall	Old School (Mossbank) Youth Centre
North-a-Voe Hall – Yell	Sandness Hall	Cunningsburgh Hall	Brae Youth Centre
Herra Hall – Yell	Aith Hall	Sandwick (Carnegie) Hall	Livister (Whalsay) Youth Centre
Mid Yell Hall	Bixter Hall	Bigton Hall	Sandwick Youth & Comunity Centre
West Sandwick Hall – Yell	Walls Hall	Levenwick Hall	Sandveien Neighbourhood Centre
North Ness Hall (Ulsta) – Yell	Gruting Community Centre	Dunrossness (Boddam) Hall	
Burravoe Hall – Yell	Skeld Hall	Virkie (Bruce Memorial) Hall	Outdoor Education Centres
East Hall – Yell	Whiteness and Weisdale Hall	Fair Isle Hall	Bridge End Outdoor Centre – Burra
Fetlar Hall – Fetlar	Tingwall Hall	Lerwick and Bressay	Voxter Outdoor Centre – Brea
North Mainland	Scalloway Hall	Islesburgh Community Centre	
North Roe and Lochend Hall	Trondra Hall	North Stoney Hall	
Eshanness Community Centre	Burra (Hamnavoe) Hall	Lerwick Town Hall	
Ollabery Hall	Bridge End Hall	Sound Hall	
Hillswick Hall	North Nesting Hall	St Clement's	
Mossbank Hall	South Nesting Hall		

Shetland Community Directory

The Shetland Community Directory is an online database which aims to provide a single source of information for a wide and diverse range of community groups, voluntary organisations and public services throughout Shetland. To date, contact details for over 1100 organisations in Shetland are listed, including sport clubs and associations, hall committees, youth clubs, heritage groups, leisure centres and more.

If you are involved with any community groups or voluntary organisations, please check to see if your group's details are listed. If not, and you would like to see them included, you will find further instructions on how to 'join' on the website: www.shetland.gov.uk/communitydirectory

For more information, please contact Michael Duncan – Grants Co-ordinator – (01595) 744981.

Golf Facilities in Shetland

Dale Golf Course (18 holes)
 Whalsay Golf Course (18 holes)
 Asta Golf Course (9 holes)
 Knab Golf Course (9 holes)
 Moorpark (driving range)

Source: Community Development, SIC

Crime

The Shetland Area Command of the Northern Constabulary is run by the Northern Joint Police Board, administered by Highland Council. In 2004/05, the requisition from Shetland Islands Council was £1,920,629, and in 2005/06 will be £1,810,501.

Police Stations 2004

Single Officer Police Stations: 5 (Scalloway, Dunrossness, Baltasound, Mid Yell and Whalsay)
 Section Stations under Sergeant-in-Charge: 1 (Brae)
 Shetland Command Area Headquarters: 1 (Lerwick)

Police Establishment

1971	1981	1986	1991	1996	2001	2003	2004
21	45	36	36	37	38	38	38

Crimes and Offences reported to the Police

	1981	1986	1991	1996	2001	2003	2004
Group 1	24	24	21	14	32	22	15
Group 2	12	2	3	8	7	10	14
Group 3	352	345	279	347	264	271	221
Group 4	126	133	199	235	188	228	306
Group 5	83	71	53	151	106	138	214
Group 6	422	286	322	471	292	393	505
Group 7	874	926	1,278	524	697	544	717
Total	1,893	1,787	2,155	1,750	1,586	1,606	1,992

Group 1: Non-sexual crimes against the person
 Group 2: Crimes involving indecency
 Group 3: Crimes involving dishonesty
 Group 4: Fire-raising, malicious and reckless conduct
 Group 5: Other crimes
 Group 6: Miscellaneous
 Group 7: Offences relating to motor vehicles

The detection rate in respect of crimes as detailed in groups 1-5 above was 68.5% in 2004.

Source: Northern Constabulary, Inverness

Coastguard Services

HM Coastguard is part of the Maritime Coastguard Agency (MCA) and is an Executive Agency which discharges the Department of Environment, Transport & the Region's responsibility for maritime search and rescue and counter pollution operations in UK waters. Shetland Maritime Rescue Sub Centre (MRSC), located at the Knab in Lerwick, is manned 24 hours a day by a team of Coastguard Officers. Auxiliary Coastguard Rescue Companies (CRCs) are located at various points around the Shetland coast. A Sikorsky S61N helicopter based at Sumburgh is under contract to the Coastguard and is available 24 hours a day.

Incidents Co-ordinated by Shetland Coastguard

1986	1991	1996	2000	2001	2002	2003
62	104	123	152	300	357	305

2003 Statistics

		To Vessels:	
Persons assisted	1,261	Strandings (grounding)	12
Persons rescued	69	Taking water	14
Lives lost	4	Capsized	1
		Sail, gear, mast failure	2
To Persons:		Machinery failure	38
Casevac/Medevac	23	Vessels overdue	3
Cut off by tide	1	Adverse weather conditions	8
Missing person	6	Fire/Explosions	3
Person on cliff	1	Out of fuel	1
Divers in difficulty	30	Fouled propeller	13
Swimmer in trouble	2	Uncertain position	3
Other	10	Fishing gear snagged	2
		Other	48

Helicopter Missions

	1991	1996	1999	2002	2003
Medevacs	25	30	31	64	36
Assistance to offshore installations	12	6	10	3	4
Vessels sinking	6	7	5	2	3
Vessels afire or missing	3	3	2	0	1
Vessels aground or adrift	7	2	3	4	2
Searches (including emergency transmissions)	5	22	17	9	9
Missing persons	3	0	7	4	8
Other	5	6	3	2	12
Total	66	76	78	88	75

Source: Maritime Coastguard Agency, Lerwick. No information is available for Coastguard Services in 2004.

Fire Service

The Fire Service in Shetland is run by Highland and Islands Fire Brigade, administered by Highland Council. In 2004/05, the requisition from Shetland Islands Council was £1,133,482 and in 2005/06 will be £1,771,950.

Fire Units in Shetland 2004

Location	Establishment	Appliances
Retained:		
Lerwick	20 + 3 full-time officers	2 water tender appliances 1 light fire appliance
Brae	20	2 water tender appliances
Auxiliary:		
Baltasound, Mid Yell, Scalloway, Fetlar, Fair Isle, Sumburgh, Walls and Whalsay	12 per unit	1 light fire appliance, fully equipped with breathing apparatus per unit
Foula, Hillswick, Mossbank, Bixter, Sandwick, Skerries and Bressay	12 per unit	1 light fire appliance per unit
Hamnavoe and Papa Stour	12 per unit	1 portable pump, hose and ancillary equipment
Total Retained and Volunteers	247	

Fires Attended

	1986	1991	1996	2001	2002	2003	2004
Chimney fire	64	66	50	27	13	25	12
Special services (pumping out boats, properties, road traffic accidents)	9	40	19	25	23	35	28
Property and small fires	42	54	45	62	33	33	42
False alarms, good intent	26	42	84	114	111	94	122
False alarms, malicious	4	3	22	7	9	2	3
Total	145	205	220	235	189	189	207

Source: Highland and Islands Fire Brigade, Inverness

Postal Services

Post Office Employees

	1991		1996		2001		2004	
	Royal Mail Delivery	PO Counters Ltd	Royal Mail Delivery	PO Counters Ltd	Royal Mail Delivery	PO Counters Ltd	Royal Mail Delivery	PO Counters Ltd
Full Time Staff	41	7	41	6	54	6	59	4
Part Time Staff	26	1	26	3	24	3	29	3
Sub Postmasters	{ -	29 (FT)	-	20 (FT)	-	15 (FT)	-	15 (FT)
	{ -	23 (PT)	-	27 (PT)	-	23 (PT)	-	23 (PT)
Ancillary Staff	8	0	5	0	1	0	2	0
Total	75	60	72	56	79	47	90	45

Sources: Royal Mail and PO Counters Ltd, Lerwick

Letters Posted Weekly

1977	1981	1991	1996	2001	2003	2004
52,602	69,400	67,317	60,660	62,889	60,408	62,913

Source: Royal Mail, Lerwick

Television Licences

1976	1981	1986	1991	1996	1999	2002	2003
5,463	6,647	6,480	7,013	7,965	8,178	8,869	8,782

Source: TV Licensing. Figures for 2004 are unavailable.

Energy

Electricity Generation

	1971/72	1981/82	1991/92	2001/02	2002/03	2003/04
Units Generated (kilowatt hours)	32,319,000	143,539,222	170,023,850	230,600,000	226,158,000	226,604,000
Maximum demand (megawatts)	11.69	36.0	41.2	45.2	48.6	48.8

Electricity Distribution (km)

	1971	1981	1991	1996	2001	2004*
33,000 Volt overhead lines	24.7	98.0	128.3	133.0	167.3	167.3
33,000 Volt underground cables	0.0	3.7	11.6	11.6	10.7	10.7
11,000 Volt overhead lines	705.9	756.2	843.0	879.0	812.2	812.2
11,000 Volt underground cables	15.1	65.5	99.3	111.0	110.8	110.8
Low Voltage overhead lines	340.1	345.6	324.5	294.0	227.4	227.4
Low Voltage underground cables	18.9	65.6	122.7	163.0	219.0	219.0

Figures from 1991 onwards are approximations only

* 2004 figures are the same as 2002-3

Source: Scottish Hydro-Electric, Lerwick

Renewable Energy

Renewable Energy Projects in Shetland by Type and Ownership

Total Installed Capacity in kW

	Commercial	Community	Household	Public	Total
Wind	3,680	205	37	33	3,955
Heat Pump	-	-	39.5	-	39.5
Solar	-	28	-	5.6	33.6
District Heating	-	7,000	-	-	7,000
Total	3,680	7,233	76.5	38.6	11,028.1

Source: Shetland Renewable Energy Forum

Water and Wastewater Services

Water and wastewater services in Shetland are provided by Scottish Water. Scottish Water is a public corporation created in April 2002 from the merger of the three predecessor water authorities: North of Scotland, West of Scotland and East of Scotland Water Authorities. Scottish Water is the fourth largest water operator in the UK with a turnover of almost £1 billion and five million customers. It operates within a regulatory framework set up by Ministers and involving independent regulators, the Drinking Water Quality Regulator (DWQR), the Water Industry Commissioner (WIC) and the Scottish Environment Protection Agency (SEPA). The Shetland Area office of Scottish Water (Duncan House) is located at Upper Sound, Lerwick.

Water Supplied (millions of litres)

1976	1981	1986	1991	1996	2001	2003	2004
2,627	4,964	4,607	4,691	3,990	4,104	3,893	3,974

Many thousands of water samples are taken throughout Shetland during each year. These are analysed and compared against a number of bacterial and chemical parameters as specified in the Water Supply (Water Quality) (Scotland) Regulations 1990.

Microbiological Quality (percentage compliance at W.T.W.S.)

1991	1996	1998	1999	2000	2001	2003	2004
97.20	99.18	99.87	99.81	99.91	99.94	99.49	99.59

Networks

		1999	2002	2003	2004
Water connections:	Domestic	9,502	9,655	9,655	9,695
	Non-domestic	1,119	1,133	1,133	1,148
Sewer connections:	Domestic	6,701	6,747	6,756	6,791
	Non-domestic	712	721	721	729
Length of water mains (km)		1,005	1,001	1,015	1,015
Length of sewers (km)		365	370	370	370

Treatment

	1999	2002	2003	2004
Wastewater treatment plants (including septic tanks)	60	64	64	64
Water treatment works (excluding re-chlorination stations)	18	18	18	14

Scottish Water maintains a programme for the decommissioning of small and inefficient rural waterworks and for the linking of these supply zones to larger works such as Lerwick (Sandy Loch) or Northmavine (Eela Water). This ensures better control of water quantity and quality.

During 2003, the Sandwick and Cunningsburgh zones were connected to Lerwick and the trunk main was extended to Sumburgh.

Improvement schemes in 2003/04 included Out Skerries, West Burrarfirth, Unst, Fetlar, Mid Yell, Fair Isle and Papa Stour.

Source: Scottish Water, Lerwick

Built Heritage

Buildings of Special Architectural or Historic Interest

Scottish Ministers compile lists of Buildings of Special Architectural or Historic Interest in order that such buildings may be identified and appropriate measures for their conservation can be taken. The list for Shetland is sub-divided into categories. Category A buildings are of national and international importance whilst those in Category C(s) are of more local interest, of lesser importance or altered.

	Cat. A	Cat. B	Cat. C(s)	Total	List Published
Bressay	1	10	3	14	26/03/97
Deltig	0	10	4	14	26/03/97
Dunrossness	4	19	8	31	26/03/97
Fetlar	0	3	3	6	30/03/98
Lerwick	3	57	47	107	12/08/96
Lerwick Landward	0	1	1	2	26/03/97
Nesting	0	14	8	22	30/03/98
Northmavine	0	10	8	18	26/03/97
Sandsting and Aithsting	2	7	6	15	26/03/97
Tingwall	2	10	28	40	28/07/00
Unst	3	10	12	25	30/03/98
Walls and Sandness	0	13	10	23	30/03/98
Yell	2	10	18	30	30/03/98
Total	17	174	156	347	

Conservation Areas

Conservation Areas are areas of architectural or historic interest, the character and appearance of which it is desirable to preserve or enhance. The designation recognises the value of groups of buildings and their settings and allows them to be treated as a whole. Within Conservation Areas planning authorities must ensure that strict and appropriate standards of development control are maintained and that positive plans are prepared for the preservation and enhancement of the area. The Council, as Planning Authority, has designated three Conservation Areas in Shetland: Lerwick Lanes Outstanding Conservation Area (designated in 1975); Lerwick New Town Conservation Area (1986); and Scalloway Conservation Area (1984).

Scheduled Ancient Monuments

A scheduled monument is an ancient monument that has been given legal protection under the Ancient Monuments and Archaeological Areas Act 1979. Ancient monuments must be considered to be of national importance before they can be scheduled. The Scottish Ministers are responsible for maintaining the schedule of ancient monuments.

Ancient Monuments

There were 403* scheduled ancient monuments as at 15 September 2005 in the following categories:

Prehistoric: ritual and funerary	111
Prehistoric: domestic and defensive	227
Crosses and carved stones	3
Ecclesiastical	21
Secular	50
Industrial	17

* Some monuments appear in more than one category. Eight monuments are in the care of the Scottish Ministers.

Source: Department of Infrastructure Services, SIC

Sites and Monuments Record

Shetland Amenity Trust maintains the Shetland Sites and Monuments Record, a record of all the known sites in Shetland. The record is constantly expanding, both as the result of survey work being carried out by the Trust's Archaeology team, visiting universities, and reports from the general public. The record incorporates sites of all periods, up to and including the crofting period, the Second World War and the Cold War.

The current number of recorded archaeological sites is 7229.

These include:

Broch/possible broch	141
Burnt mounds	340
Chambered cairns	118
Viking/Norse houses	52
Souterrains	26
Military remains	436
Fishing Stations	32
Wheelhouses	7

Excavation

Visitor numbers to old Scatness:	2000 – 6,615
	2001 – 4,600*
	2002 – 6,237
	2003 – 6,415
	2004 – 6,187

* Visitor numbers were affected by the foot and mouth crisis.

Source: Shetland Amenity Trust; Department of Infrastructure Services, SIC

Nature Conservation

Scottish Natural Heritage is the independent government agency responsible for safeguarding and enhancing Scotland's countryside and wildlife, and promoting the understanding and enjoyment of the natural heritage.

Statutory Conservation Sites in Shetland

3 National Nature Reserves (NNR):	Herma Ness (Seabird Colony)	980.3 ha
	Keen of Hamar (Serpentine Flora)	51.3 ha
	Noss (Seabird Colony)	313.0 ha

81 Sites of Special Scientific Interest (SSSI)

Geology – 31 sites	Marsh and Meadow – 4 sites	Rare Plants – 5 sites
Geomorphology – 7 sites	Limestone Grassland – 1 site	Seabirds – 9 sites
Montane Habitats – 1 site	Sand Dune Flora – 2 sites	Moorland Birds – 14 sites
Serpentine Vegetation – 4 sites	Trees and Woodland – 4 sites	Wildfowl – 3 sites
Other Heathland – 4 sites	Intertidal Habitats – 6 sites	Aquatic Fauna – 3 sites
Peatland – 4 sites	Aquatic Flora – 6 sites	Mammals – 3 sites

Note: Some sites are notified for more than one feature of interest.

17 of the ornithological sites are also designated as Special Protection Areas under the EC Birds Directive. A further 11 sites have been designated as Special Areas of Conservation under the EC Habitats & Species Directive.

Total area covered by statutory conservation sites is 19,852 hectares which represents 13.5 per cent of the total area of Shetland.

Approximate area coverage:

Foula – 2 sites	100%	Noss – 1 site	100%
Fetlar – 6 sites	70%	Mainland & uninhabited islands	
Fair Isle – 1 site	66%	— 45 sites (1 shared with Yell)	9%
Papa Stour – 1 site	79%	Yell – 9 sites (1 shared with Mainland)	4%
Unst – 16 sites	21%	Muckle Roe – 1 site	0.1%





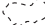

Wildlife

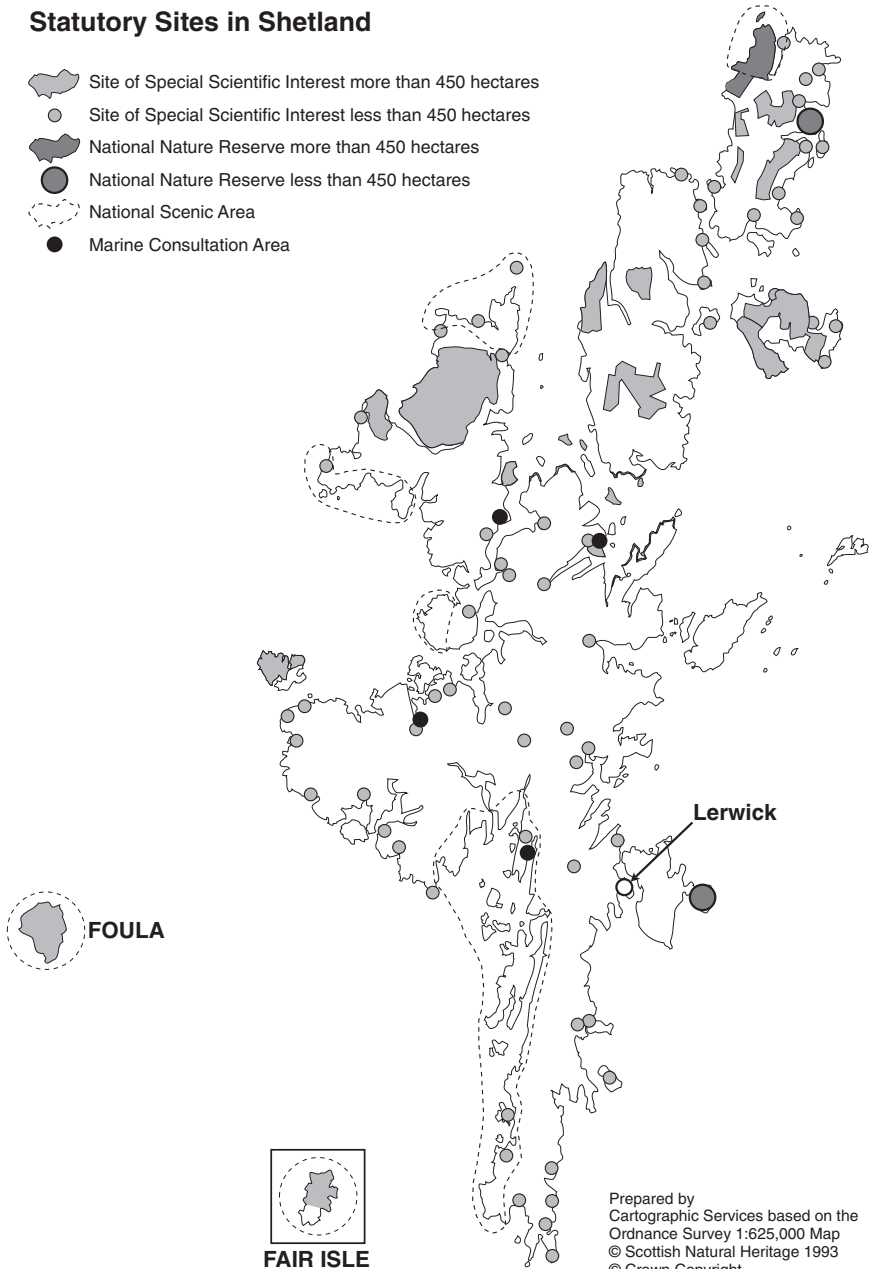
Latest population estimates for selected species are as follows:

Species	Population	Proportion of GB population
Red-necked Phalarope	25-30 pairs	90%
Whimbrel (tang-whaup)	4-500 pairs	95%
Great Skua (bonxie)	6,800 pairs	71%
Arctic Skua (skootie alan)	1,100 pairs	52%
Red-throated Diver (raingoose)	400 pairs	40%
Arctic Tern (tirrick)	25,000 pairs	44%
Fulmar (maalie)	190,000 pairs	38%
Black Guillemot (tystie)	16,000 adults	41%
Shag (skarf)	6,000 pairs	21%
Puffin (tammie norie)	100,000 pairs	18%
Gannet (solan)	26,000 pairs	12%
Grey Seal (selkie)	3,500 individuals (excluding pups)	18%
Otter (dratsie)	800 - 1,000 individuals	12%
Common Seal (selkie)	6,000 + individuals	3%

Source: Scottish Natural Heritage, Lerwick

Statutory Sites in Shetland

-  Site of Special Scientific Interest more than 450 hectares
-  Site of Special Scientific Interest less than 450 hectares
-  National Nature Reserve more than 450 hectares
-  National Nature Reserve less than 450 hectares
-  National Scenic Area
-  Marine Consultation Area



Prepared by
 Cartographic Services based on the
 Ordnance Survey 1:625,000 Map
 © Scottish Natural Heritage 1993
 © Crown Copyright

Electoral Statistics

General Election results in the Orkney and Shetland UK Parliamentary Constituency:

MAY 2001

Alastair Carmichael (Lib Dem)	6,919
Robert Mochrie (Lab)	3,444
John Firth (Con)	3,121
John Mowat (SNP)	2,473
Peter Andrew (SSP)	776

Electorate: 31,909
(Shetland: 16,899; Orkney: 14,931)

MAY 2005

Alistair Carmichael (Lib Dem)	9,138
Richard Meade (Lab)	2,511
Frank Nairn (Con)	2,357
John Mowat (SNP)	1,833
John Aberdein (SSP)	992
Scott Dyble (UKIP)	424
Paul Cruickshank	311
Brian Nugent (Free Scotland Party)	176

Electorate: 32,369
(Shetland: 16,855; Orkney: 15,784)

European Assembly Election results in the Scottish Region:

JUNE 2004

Scottish Labour Party	310,865
Scottish National Party (SNP)	231,505
Scottish Conservative and Unionist Party	209,028
Scottish Liberal Democrats	154,178
Scottish Green Party	79,695
UK Independence Party	78,828
Scottish Socialist Party	61,356
Operation Christian Vote	21,056
British National Party	19,427
Scottish Wind Watch	7,255
Fergus Alexander Tait	3,624

Total Electorate: 3,877,194

Scottish MEPs: David Martin (Labour Party), Ian Hughton (SNP), Struan Stevenson (Conservative & Unionist Party), John Purvis (Conservative & Unionist Party), Elspeth Attwooll (Scottish Liberal Democrats), Catherine Stihler (Labour Party), Alyn Smith (SNP)

(Voting in the UK Parliamentary Constituency of Orkney & Shetland)

Scottish Liberal Democrats	2,139
Scottish Conservative and Unionist Party	1,437
Scottish National Party (SNP)	1,306
Scottish Labour Party	889
UK Independence Party	846
Scottish Green Party	817
Scottish Socialist Party	648
Operation Christian Vote	204
British National Party	121
Scottish Wind Watch	70
Fergus Alexander Tait	38

Electorate: 32,329 (Shetland: 16,723; Orkney: 15,606)

Scottish Parliamentary Election results in the Shetland Constituency:

MAY 2003

Tavish Scott (Scottish Liberal Democrat)	3,989
Willie Ross (Scottish National Party)	1,729
John Firth (Scottish Conservative & Unionist Party)	1,281
Peter Hamilton (Scottish Labour Party)	880
Peter Andrews (Scottish Socialist Party)	766

Electorate: 16,677 – Turnout: 8,718

Source: Department of Legal and Administrative Services, SIC

Scottish Referendum:

SEPTEMBER 1997

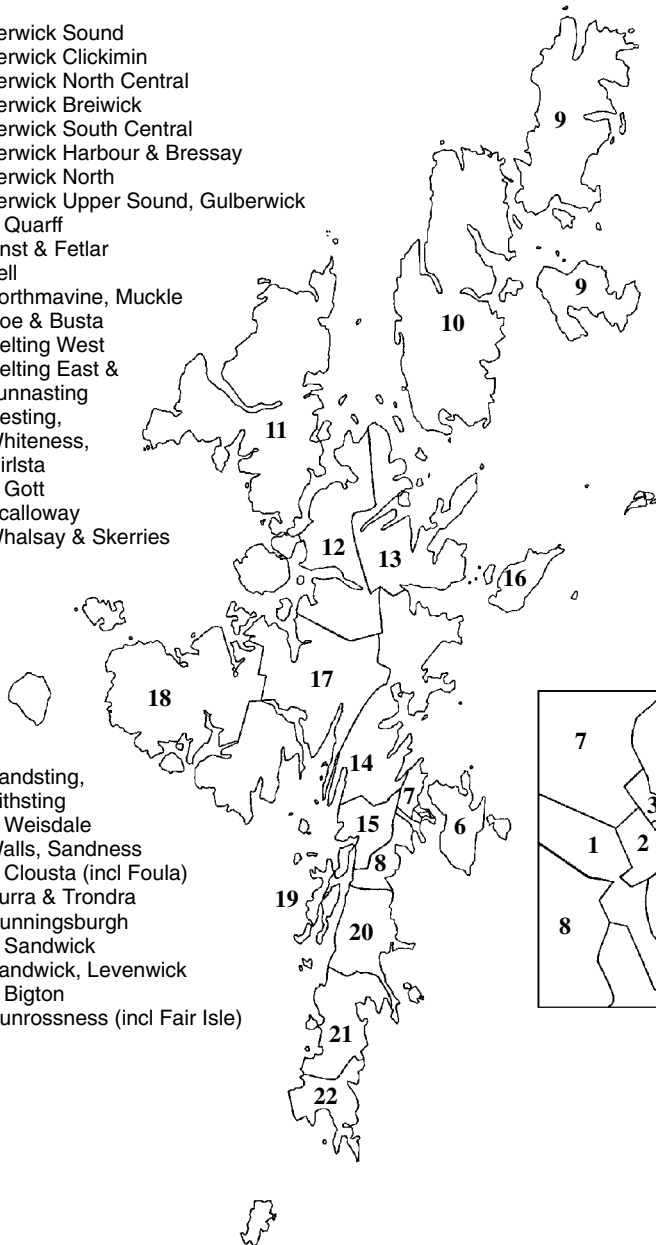
Votes cast in Shetland:

"I agree that there should be a Scottish Parliament"	5,430 (62.38% of votes cast)
"I do not agree that there should be a Scottish Parliament"	3,275 (37.62% of votes cast)
"I agree that a Scottish Parliament should have tax varying powers"	4,478 (51.61% of votes cast)
"I do not agree that a Scottish Parliament should have tax varying powers"	4,198 (48.39% of votes cast)

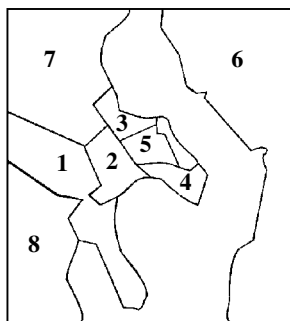
Electorate (Shetland): 16,954

Local Government Electoral Divisions

- 1 Lerwick Sound
- 2 Lerwick Clickimin
- 3 Lerwick North Central
- 4 Lerwick Breiwick
- 5 Lerwick South Central
- 6 Lerwick Harbour & Bressay
- 7 Lerwick North
- 8 Lerwick Upper Sound, Gulberwick & Quarff
- 9 Unst & Fetlar
- 10 Yell
- 11 Northmavine, Muckle Roe & Busta
- 12 Delting West
- 13 Delting East & Lunnasting
- 14 Nesting, Whiteness, Girsta & Gott
- 15 Scalloway
- 16 Whalsay & Skerries



- 17 Sandsting, Aithsting & Weisdale
- 18 Walls, Sandness & Clousta (incl Foulda)
- 19 Burra & Trondra
- 20 Cunningsburgh & Sandwick
- 21 Sandwick, Levenwick & Bigton
- 22 Dunrossness (incl Fair Isle)



Shetland Islands Council

Members (May 2003 – May 2007)

Ward	Councillor
1 Lerwick Sound	James Henry , 17 Murrayston, Lerwick (Independent) (Electorate 582. 49% poll – 52% of votes cast)
2 Lerwick Clickimin	William N Stove , 1 Lovers Loan, Lerwick (Independent) (Electorate 719. 40% poll – 61% of votes cast)
3 Lerwick North Central	Alexander J Cluness , 5 Twageos Road, Lerwick (Scottish Liberal Democrat) (Elected unopposed)
4 Lerwick Breiwick	Cecil B Eunson , Uradale, East Voe, Scalloway (Independent) (Electorate 814. 60% poll – 74% of votes cast)
5 Lerwick South Central	Leslie Angus , 12 Lovers Loan, Lerwick (Scottish Liberal Democrat) (Electorate 776. 55% poll – 56% of votes cast)
6 Lerwick Harbour & Bressay	Edward J Knight , 13 Gressy Loan, Lerwick (Independent) (Electorate 667. 65% poll – 65% of votes cast)
7 Lerwick North	Leonard G Groat , 10 Voderview, Lerwick (Independent) (Electorate 716. 40% poll – 59% of votes cast)
8 Lerwick Upper Sound, Gulberwick & Quarff	Robert G Feather , Klingrahoull, Gulberwick (Independent) (Electorate 751. 61% poll – 60% of votes cast)
9 Unst & Fetlar	Brian P Gregson , Quam, West Sandwick, Yell (Independent) (Electorate 618. 61% poll – 66% of votes cast)
10 Yell	John P Nicolson , Scarfataing, Trondra (Scottish Liberal Democrat) (Electorate 570. Elected unopposed)
11 Northmavine, Muckle Roe & Busta	William H Manson , Mangaster, Sullom (Independent) (Electorate 708. 66% poll – 58% of votes cast)
12. Delting West	William A Ratter , Gaets-A-Voe, Ollaberry (Independent) (Electorate 705. 56% poll – 66% of votes cast)
13 Delting East & Lunnasting	Barbara J Cheyne , Hillside, Voe (Independent) (Electorate 712. 59% poll – 58% of votes cast)
14 Nesting, Whiteness, Girlista & Gott	James C Irvine , 20 Twageos Road, Lerwick (Independent) (Electorate 849. Elected unopposed)
15 Scalloway	Iris J Hawkins , 48 Sycamore Avenue, Scalloway (Independent) (Electorate 904. 52% poll – 65% of votes cast)

Ward	Councillor
16 Whalsay & Skerries	Joseph G Simpson , Brucefield, Symbister (Independent) (Electorate 841. Elected unopposed)
17 Sandsting, Aithsting & Weisdale	Florence B Grains , Hoove, Whiteness (Independent) (Electorate 964. Elected unopposed)
18 Walls, Sandness & Clousta	Frank Robertson , Columbus, Selivoe, Bridge of Walls (Scottish Liberal Democrat) (Electorate 640. Elected unopposed)
19 Burra & Trondra	John A. Inkster , Hamnavoe, Burra (Independent) (Electorate 745. 71% poll – 51% of votes cast)
20 Cunningsburgh & Sandwick	Thomas W Stove , Nordaal, Setter, Sandwick (Independent) (Electorate 765. Elected unopposed)
21 Sandwick, Levenwick & Bigton	William Tait , Bonavista, East Ireland, Bigton (Independent) (Electorate 741. 62% poll – 61% of votes cast)
22 Dunrossness	Gordon G Mitchell , Thistles, Bigton (Scottish Liberal Democrat) (Electorate 709. Elected unopposed)

Shetland Islands Council Departments

Chief Executive: Morgan Goodlad, Town Hall, Lerwick

Department/Service	Executive Director/ Director	Head of Service	Address
Executive Services Dept. Information & Communication Technologies Unit Finance Services Legal & Administration Organisational Development	Morgan Goodlad	Stuart Moncrieff Graham Johnston Jan-Robert Riise John R Smith	Town Hall, Hillhead, Lerwick Garthspool, Lerwick Montfield, Burgh Road, Lerwick 4 Market Street, Lerwick 13 Hill Lane, Hillhead, Lerwick
Community Services Dept. Education Community Development Social Work Housing	Vacant	Neil Galbraith (interim) George Smith Brian Doughty (interim) Chris Medley	Hayfield House, Hayfield Lane, Lerwick Hayfield House, Hayfield Lane, Lerwick Hayfield House, Hayfield Lane, Lerwick Quendale House, Lerwick Fort Road, Lerwick
Economic Development Unit	William Shannon	Alastair Cooper/ Douglas Irvine	Greenhead, Lerwick
Infrastructure Services Dept. Transport Roads Environment Planning	Graham Spall	Stephen Cooper (acting) Ian Halcrow Stephen Cooper Alastair Hamilton	Grantfield, Lerwick Grantfield, Lerwick Grantfield, Lerwick Grantfield, Lerwick Grantfield, Lerwick
Ports & Harbours Dept.	James Dickson		Port Administration Building, Sella Ness, Sullom Voe

* At time of going to print

Shetland Islands Council Finance

	2002/03			2003/04		
Services Provided by Shetland Islands Council	Revenue Expend. £'000	Capital Charges £'000	Total Expend. £'000	Revenue Expend. £'000	Capital Charges £'000	Total Expend. £'000
GENERAL FUND EXPENDITURE						
Executive Services	13,644*	(14,619)	(974)	7,497*	(11,622)	(4,125)
Community Services	49,450	6,928	56,378	54,107	4,853	58,960
Economic Development Unit	2,601	1	2,601	2,875	3	2,879
Infrastructure Services	18,562	7,110	25,672	29,439	6,865	36,304
Ports & Harbours Operations**	9,454	1,267	10,721	-	-	-
Committee Expenditure	93,710	687	94,398	93,918	100	94,018
Source of Finance:						
Revenue Support Grant			(56,991)			(61,067)
Non-Domestic Rates			(7,041)			(7,297)
Council Tax			(5,884)			(6,365)
Contributions and Balances			(14,598)			(15,984)
General Fund Balance			(9,387)			3,305
HARBOUR ACCOUNT EXPENDITURE						
Harbour Operations	8,976	2,758	11,734	7,211	3,174	10,358
Source of Finance:						
Tanker Traffic			(7,416)			(6,764)
Mooring Charges			(427)			(358)
Boarding and Landing			(434)			(372)
Pilotage			(1,026)			(895)
Grants and Reimbursements			(0)			(0)
Other Income			(5,765)			(2,711)
Harbour Account Balance			(3,334)			(742)
HOUSING REVENUE ACCOUNT EXPENDITURE						
Housing Services	3,444	4,564	8,008	3,197	3,676	6,873
Source of Finance:						
Housing Support Grant			(2,650)			(2,548)
Rents and Other Client Income			(5,226)			(5,140)
Financing and Contributions			(132)			(815)
Housing Revenue Account Balance			0			0

* Figure includes one-off payment to Pension Fund of £5,902,058

** As of 2003/04 Ports and Harbours Ferry Operations are part of Infrastructure Services and included in their total

Source: Department of Finance Services, SIC

Rating and Valuation

	1996/97*	2000/01	2001/02	2003/04
	Pence per £	Pence per £	Pence per £	Pence per £
Non-Domestic Rates				
General	44.90	45.80	47.00	47.80
Water	9.75	9.60	9.76	2.50
Sewerage	8.06	8.04	9.61	4.00
Total	62.71	63.44	66.37	54.30

	1996/97*	2000/01	2001/02	2003/04
	Pence per £	Pence per £	Pence per £	Pence per £
Council Tax (Band D)				
General	443.21	684.00	747.00	873.00
Sewerage	65.50 gross	134.20	157.55	186.29
	4.50 net			
Water	116.00	165.38	192.63	163.89
Total	563.71	983.58	1,097.18	1,223.18

Domestic sewerage charges were subject to transitional relief grants, hence the gross and net figures given above for 1996/97. Prior to 2003/04 water and sewerage rates were set by individual local authorities. From 1 April 2003 rates were set nationally for the whole of Scotland.

Council Tax 2003/04

Band	Property Value	General Fund Council Tax (£)
A	Up to £27,000	582.00
B	£27,001 – £35,000	679.00
C	£35,001 – £45,000	776.00
D	£45,001 – £58,000	873.00
E	£58,001 – £80,000	1,067.00
F	£80,001 – £106,000	1,261.00
G	£106,001 – £212,000	1,455.00
H	Over £212,001	1,746.00

Source: Department of Finance Services, SIC

Community Councils

Community Council	Clerk	Tel.
Bressay	Mrs Sharon Anderson, 1 Roadside, Bressay	(01595) 820757 (Home)
Burra & Trondra	Mrs Joyce Adamson, 12 Atlaness, Hamnavoe, Burra	(01595) 859426 (Home)
Delting	Mrs Vera Clark, 42 Staneyhill, Lerwick	(01595) 697312 (Home)
Dunrossness	Mrs Shirley Leslie, Ringesta, Quendale	(01950) 460868 (Home)
Fetlar	Mrs Brenda Thomason, Tresta, Fetlar	(01957) 733221 (Home)
Gulberwick, Quarff & Cunningsburgh	Mr Robert Jarmson, Meal, Cunningsburgh	(01950) 477259 (Home)
Lerwick	Mrs Morag MacLeod, Community Council Office, Stouts Court, Lerwick	(01595) 692447 (Office)
Nesting & Lunnasting	Mrs E. Ganson, Lochend, Girlsta	(01950) 840460 (Home)
Northmavine	Mrs Frances Williamson, Kerika, Ollaberry	(01806) 544369 (Home)
Sandness & Walls	Mrs B. Henry, Pier House, Walls	(01595) 809274 (Home)
Sandsting & Aithsting	Ms Laurena Fraser, West Burrafirth, Bridge of Walls	(01595) 809203 (Home)
Sandwick	Mrs Rosemary Inkster, Wainui, Hoswick, Sandwick	(01950) 431284 (Home)
Scalloway	Mrs Sandra Reynolds 12 Berry Road, Scalloway	(01595) 880429 (Home)
Skerries	Mrs Marina Tait Emhoruo, East Isle, Skerries	(01806) 515245 (Home)
Tingwall, Whiteness & Weisdale	Mrs M. Smith, Stenaquoy, Wormadale	(01595) 840480 (Home)
Unst	Mrs Josie McMillan Rockfield, Haroldswick, Unst	(01957) 711554 (Home)
Whalsay	Mrs Hazel Simpson, Old Haa, Symbister, Whalsay	(01806) 566224 (Home)
Yell	Mrs J. Smiles, Aywick, East Yell	(01957) 702241 (Home)
Association of Shetland Community Councils	Secretary & Treasurer: Mrs Wendy Fraser, 11 Mounthooly Street, Lerwick	(01595) 693816

Source: Department of Legal & Administrative Services, SIC

Culture and Media

Best Sellers 2004

Shetland Interest Books

- 1 Willie's War**
Willie Smith
- 2 Black Gold Tide**
Tom Kidd and Tom Morton
- 3 Around Shetland: A Picture Guide**
Various
- 4 Final Curtain**
James W. Irvine
- 5 Impossible Garden**
Rosa Stepanova
- 6 Shetland Bus**
David Howarth
- 7 Other Titanic**
Simon Martin
- 8 Local News**
Malcolm Hulme
- 9 Shetland Bus Man**
Kaare Iversen
- 10 Walking the Coast of Shetland No. 7 — Eastside**
Peter Guy

Source: Shetland Times Bookshop

Shetland CD and Music Cassette Local Retail Sales

- 1 Naked and Bare**
Fiddlers' Bid
- 2 With Silver and All**
Jenna Reid
- 3 Tracks North**
Various
- 4 Da Farder Ben Da Welcomer**
Fiddlers' Bid
- 5 Take Note**
Swingin' Fiddles
- 6 Dance o' da Shetland Puffins**
Da Fustra
- 7 No Afore Time**
Hom Bru
- 8 Live and Hazardous**
Rock, Salt and Nails
- 9 Migrant**
Shoormal
- 10 First o' the Darkenin**
Chris Stout

Source: Clive's Record Shop

Media

	Av. Sales per issue		
The Shetland Times	Weekly	11,260	(Jan – Dec '04)
Shetland Life	Monthly	2,400	(Nov '03 – Sep '04)
New Shetlander	Quarterly	1,450	(Jan – Dec '04)

Sources: The Shetland Times and Shetland Council of Social Service

Local Radio

BBC Radio Shetland	5 nights weekly
SIBC (Shetland Islands Broadcasting Company)	24 hr

Shetland Interest Publications

Literature about Shetland is varied and the following is representative of currently available material. It makes no claim to be an exhaustive list. Books, and further information on the latest publications, are available from: The Shetland Times Bookshop, 71/79 Commercial Street, Lerwick, Shetland, ZE1 0AJ. Tel: (01595) 695531. Fax: (01595) 692897. E-mail: bookshop@shetland-times.co.uk

General Interest		£
Blackadder, Jill Slee	Colin Baxter Island Guides: Shetland	20.00
Holmes, Robin	The Holiday Planning Guide to Shetland	14.99
Hulme, Malcolm (Ed.)	Local News	9.99
Penrith, James & Deborah	Scottish Islands: Orkney and Shetland	11.95
Tait, Charles	The Shetland Guide Book	11.95
(Various)	Around Shetland: A Picture Guide	5.99

Economy, Archaeology and History		£
Armit, Ian	Towers in the North: The Brochs of Shetland	15.99
Ballantyne, John & Smith, Brian	Shetland Documents 1580-1611	7.50
Brown, Callum G	Up-Helly-Aa: Customs, Culture & Community in Shetland	12.00
Chadwick, Frank	Gash Boat	9.95
Crawford, B E	Northern Isles Connections	14.99
Donaldson, G	Court Book of Shetland 1615-1629	8.50
Downes, Jane	Prehistoric Houses at Sumburgh in Shetland	20.00
Eastwood, M & J	E. B. Jamieson – Anatomist & Shetlander	9.99
Graham, John	A Vehement Thirst After Knowledge: Four Centuries of Education in Shetland	20.00
Graham, L & Smith, B (Ed)	MacDairmid in Shetland	7.95
Hobbin, Agnes	A Peerie Peek at da Past	8.99
Howarth, David	The Shetland Bus	7.99
Iversen, Kaare	Shetland Bus Man	10.99
Irvine, James W	Good Old Days	3.75
Irvine, James W	The Dunrossness Story	13.50
Irvine, James W	The Final Curtain	9.00
Knox, Susan A	The Making of the Shetland Landscape	20.00
Martin, Simon	The Other Titanic	17.99
Miller, James	The North Atlantic Front	20.00
Morris, Jeff	The History of the Lerwick Lifeboats	3.00
Nicolson, James R	The Swan – Shetland's Legacy of Sail	9.99
Robarts, Fred	Ultima Thule – Recollections of Shetland Holidays in the 1930s – in Pictures	12.00
Robson, Adam	The Saga of the Earls	30.00
Sandison, Ronald	Christopher Sandison of Eshaness (1781-1870) – Diarist in an Age of Social Change	9.99 24.00
Smith, Brian	Toons & Tenants: Settlement & Society in Shetland 1299-1899	13.99
Smith, Hance D	Shetland Life and Trade	25.00
Smith, Willie	Willie's War and Other Stories	9.99
Sorvaag, Trygve	The Shetland Bus 1940-45 – Faces and Places 60 Years On	25.00
Simmons, David	Shetland Crofter Postie	8.99
Strachan, David	As Time Goes By	8.99
Telford, Susan	In a World a Wir Ane: A Shetland Herring Girl's Story	7.99
Thomason, Edward	Island Challenge	18.00
Turner, Val (Ed)	The Shaping of Shetland	12.00

Natural Environment and Wildlife		£
Copland, John	Hardy Plants in the North	5.99
Dymond, J	The Birds of Fair Isle	5.95

Gammack, Joyce	A Shetland Nature Diary	9.95
Gosling, A (Ed)	A Century of Shetlands 1890-1990	15.00
Guy, Peter	Walking the Coastline of Shetland, The Island of Yell	6.95
Guy, Peter	Walking the Coastline of Shetland, No. 2 (Unst)	9.99
Guy, Peter	Walking the Coastline of Shetland, No. 5 (Westside)	9.99
Guy, Peter	Walking the Coastline of Shetland, No. 6 (South Mainland)	8.99
Guy, Peter	Walking the Coastline of Shetland, No. 7 (Eastside)	9.99
Harrop, Hugh	Where to Watch Birds	6.00
Hodson, A	Shetland Pony	14.95
Hunter, Margaret	Shetland Ponies	17.99
Jamieson, Harry	Harry's Shetland Fishing Almanac 2005	4.00
Johnston, J Laughton	A Naturalist's Shetland	35.00
Okill, Dave etal	The Birds of Shetland	40.00
Russell, V	Shetland Ponies	15.99
Scott, Walter; Harvey, Paul;		
Riddington, Roger; & Fisher, Morag	Rare Plants of Shetland	21.75
Steppanova, Rosa	Impossible Garden	25.00
Shetland Anglers' Association	Trout Fishing in Shetland	9.95
Welsh, M	Walking Shetland	6.99

Language, Folklore, Fiction, Poetry, Food and Music **£**

Anderson, Tom	The Tom Anderson Collection, Volume One	9.95
Barnes, Michael P	The Norm Language of Orkney & Shetland	9.95
Cluness, A T	Told Round the Peat Fire	9.99
Cluness, Alex	Shetland and Other Poems	5.99
Cooper, Susan	Key Notes: The History of the Lerwick Orchestra	9.00
De Luca, Christine	Wast Wi' Da Valkyries	8.99
Graham, J J	Shadowed Valley	9.99
Greig, Charles	A Rich Heritage	6.99
Guy, Christine	Songs and Sights of Shetland	7.99
Hall, David Alan	Doon da Gait	9.50
Hallett, Nigel	Da Roup & Other Tunes	7.50
Hunter, William A	Tunes Composed by William A. Hunter, Shetland	8.50
Irvine, James W	To Be A Soldier	8.40
Jamieson, F & R	Levenep Head	9.00
Jamieson, F & R	Vidlin Voe	7.50
Johnson, Laureen	Shetland Black	8.99
Morton, Tom	The Further North You Go	7.99
Nicolson, Judi	Waves of Sound	6.50
Polson, Sam	Unst Fiddle Tunes	6.50
Pugh, Sheenagh	Kirstie's Witnesses	8.95
Ritch, P J	Mother Wave – Collection of Verse	6.95
Robertson, T A & Graham, J	Grammar and Usage of the Shetland Dialect	6.95
Scott, Sir Walter	The Pirate	8.99
Simpson, Charlie	In Da Galley	12.99
Stove, Magnus J	The Shetland Violinist	6.50
Vigor, Millie	Kippers For Breakfast	8.99
Watt, Jessie	Holm Sweet Holm	12.00

Knitting **£**

Miller, Sharon	Heirloom Knitting	30.00
Simmons, J	A Shetland Dye Book	4.50

Conversion Factors

To convert to metric, multiply by the factor shown. To convert from metric, divide by the factor.

Length

miles : kilometres	1.6093
yards : metres	0.9144
feet : metres	0.3048
inches : millimetres	25.4
inches : centimetres	2.54

Area

square miles : square kilometres	2.59
square miles : hectares	258.999
acres : square metres	4046.86
acres : hectares	0.4047
square yards : square metres	0.8361
square feet : square centimetres	929.03
square inches : square millimetres	645.16
square inches : centimetres	6.4516

Volume

cubic yards : cubic metres	0.7646
cubic feet : cubic metres	0.0283
cubic feet : cubic decimetres	28.3168
cubic inches : cubic centimetres	16.3871

Capacity

gallons : cubic decimetres	4.5461
gallons : litres	4.546
quarts : litres	1.137
pints : litres	0.568

Velocity

miles per hour : kilometres per hour	1.6093
feet per second : metres per second	0.3048
inches per second : millimetres per second	25.4

Mass

tons : kilograms	1016.05
tons : tonnes	1.016
hundredweights : kilograms	50.8023
stones : kilograms	6.3503
pounds : kilograms	0.4536
ounces : grams	28.3495

Temperature

F = Degrees Fahrenheit	C = Degrees Centigrade
Centigrade : Fahrenheit	$F = \frac{9C}{5} + 32$
Fahrenheit : Centigrade	$C = \frac{5(F-32)}{9}$