

Shetland in Statistics 2006



Shetland in Statistics



Published by
Shetland Islands Council
Economic Development Unit
6 North Ness Business Park, Lerwick, Shetland, ZE1 0LZ

© 2006 Economic Development Unit, Shetland Islands Council
33rd Edition

Printed by Shetland Litho, Gremista, Lerwick

ISBN 0 904562 85 9

Whilst every care is taken in the production of this publication, neither the publisher nor the printer can accept any responsibility for any errors or omissions therein.

Cover photograph: A well-attended session at the Lounge during Shetland Fiddle Frenzy 2005.
Photo: Didier Piquer, supplied by VisitShetland.

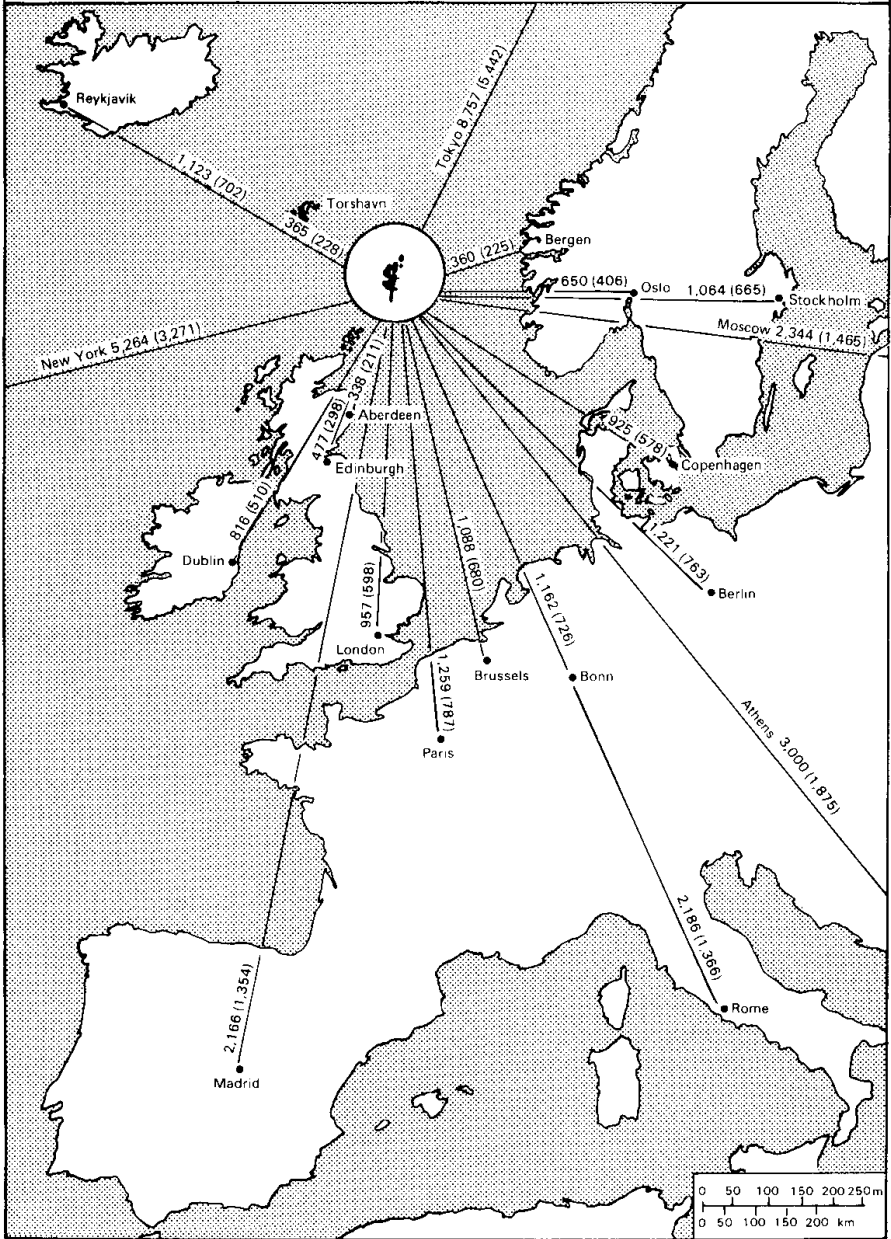
Contents

Physical:	Location	3
	Physical Characteristics	4
	Weather	5-9
	Population	10-12
Economy:	Economic Performance	13
	Employment	14-15
	Fisheries	16-19
	Fish Processing	20
	Shellfish Aquaculture	21
	Aquaculture	22
	Agriculture	23-25
	Tourism	26-28
	Oil	29-33
Transport:	Internal Transport	34
	Inter Island Ferries	34
	Overland Transport	38
	Vehicle Ownership	38
	External Ferries	39
	Lerwick Harbour	40-41
	Scalloway Harbour	41
	Air Services	42-45
Education and Services:	Leisure Facilities	50-51
	Postal Services	51
	Crime	52
	Fire Service	53
	Energy	54
	Renewable Energy	54
	Water and Wastewater Services	55
Conservation:	Built Heritage	56-57
	Nature Conservation	58-59
Politics and Local Government:	Electoral Statistics	60-61
	Shetland Islands Council Members	62-63
	Shetland Islands Council Departments	63
	Shetland Islands Council Finance	64
	Rating and Valuation	65
	Community Councils	66
Culture and Media		67
Shetland Interest Publications		68-69
Map of Lerwick		36-37
Conversion Factors		70

Shetland: Location

Lerwick is Lat 60°09' N
Lon 01°09' W

Approximate distances from Shetland
in kilometres (statute miles)



Shetland: Physical Characteristics

Distance by road in kilometres (miles) from Lerwick:

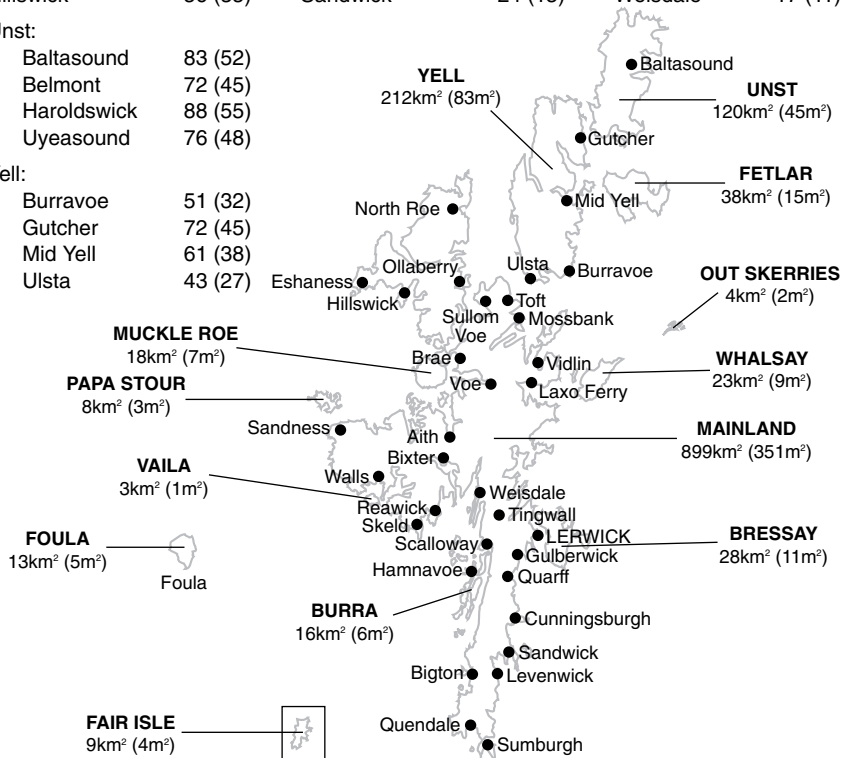
Aith	34 (21)	Laxo Ferry	35 (22)	Scalloway	13 (8)
Bigton	30 (19)	Levenwick	28 (18)	Skeld	40 (25)
Bixter	27 (17)	Mossbank	43 (27)	Sullom Voe	46 (29)
Brae	35 (22)	North Roe	61 (38)	Sumburgh	40 (25)
Cunningsburgh	18 (11)	Ollaberry	53 (33)	Tingwall	10 (6)
Eshaness	62 (39)	Quarff	11 (7)	Toft Ferry	43 (27)
Girlista	16 (10)	Quendale	38 (24)	Vidlin	38 (24)
Gulberwick	6 (4)	Reawick	38 (24)	Voe	29 (18)
Hamnavoe, Burra	16 (10)	Sandness	46 (29)	Walls	40 (25)
Hillswick	56 (35)	Sandwick	24 (15)	Weisdale	17 (11)

Unst:

Baltasound	83 (52)
Belmont	72 (45)
Haroldswick	88 (55)
Uyeasound	76 (48)

Yell:

Burravoe	51 (32)
Gutcher	72 (45)
Mid Yell	61 (38)
Ulsta	43 (27)



Total Area of Shetland: 1,468 square kilometres (567 square miles)*

Total Length of coastline: approx 1,450 kilometres (900 miles)**

* Ordnance Survey, 1988

** Prof D Flinn, 1975 estimate

Number of islands: 100+

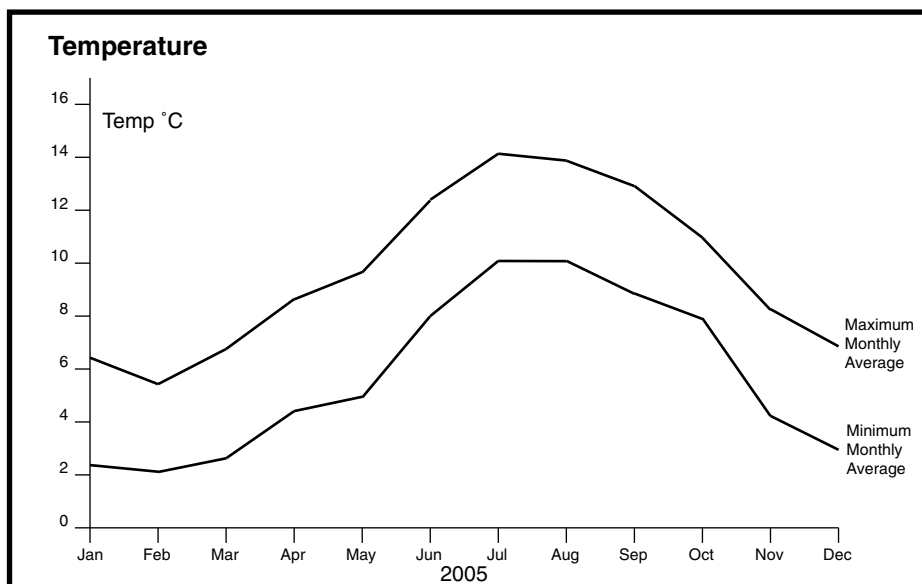
Number of inhabited islands: 15

Weather

Observations are recorded in Shetland by staff employed by the Meteorological Office in Lerwick. There are also official Auxiliary Synoptic Reporting Stations in Fair Isle and Foula. Observations from the Lerwick Observatory began in 1921, although the first full year of recordings was not until 1922. (Lerwick Observatory: 60°08'N, 01°11'W. Wind vane 93m above sea level). The recorded meteorological observations from Lerwick Observatory for 2005 are as follows:

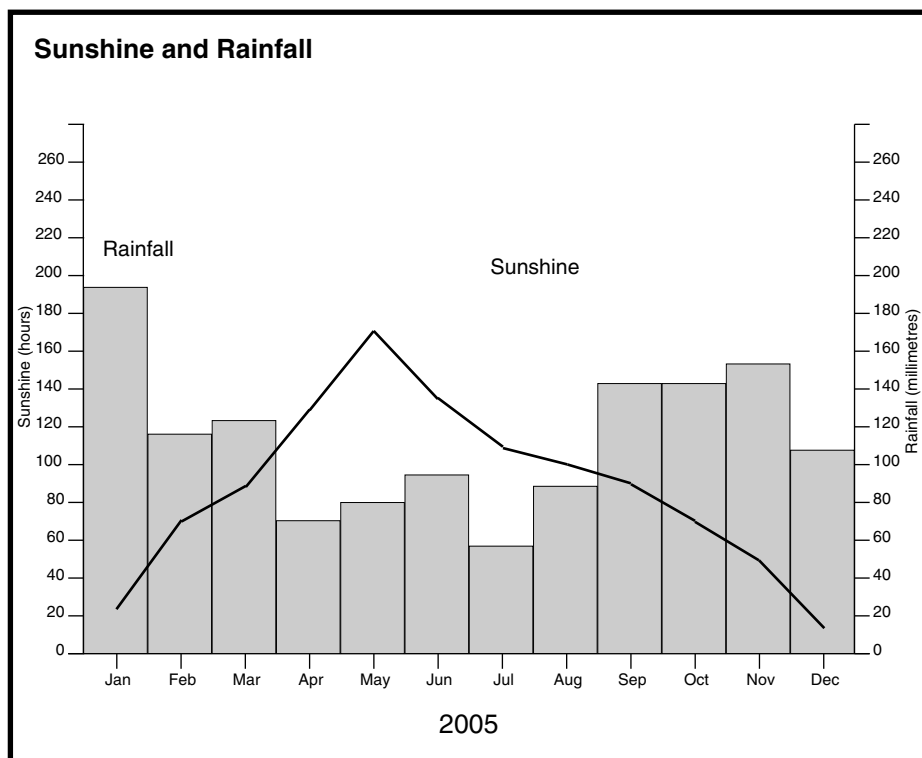
Temperature (°C)

Month	2005 Monthly Average		Mean (1971-2000)		Extreme Daily Values (1922-1998)	
	Max	Min	Max	Min	Max (Year)	Min (Year)
Jan	6.5	2.4	5.6	1.5	11.7 ('32,'50,'98)	-8.9 ('52,'59)
Feb	5.5	2.1	5.4	1.4	11.7 ('45)	-7.3 ('80)
Mar	6.8	2.6	6.3	1.9	13.3 ('61)	-8.3 ('47)
Apr	8.6	4.4	7.7	2.9	16.1 ('42)	-5.7 ('68)
May	9.7	4.9	10.2	5.2	20.7 ('92)	-2.8 ('23)
Jun	12.4	8.0	12.2	7.4	23.3 ('58)	-0.6 ('24,'29,'31,'51)
Jul	14.1	10.1	13.9	9.4	23.4 ('91)	3.3 ('21)
Aug	13.9	10.1	14.9	9.8	21.5 ('82)	1.7 ('21)
Sep	12.9	8.8	12.4	8.2	19.4 ('53)	-0.6 ('54)
Oct	11.0	7.9	10.1	6.2	17.2 ('55)	-3.3 ('48)
Nov	8.3	4.2	7.6	3.5	13.9 ('46)	-5.7 ('62)
Dec	6.9	3.0	6.2	2.0	12.2 ('48)	-8.3 ('61)
Year	9.7	5.7	9.4	5.0		



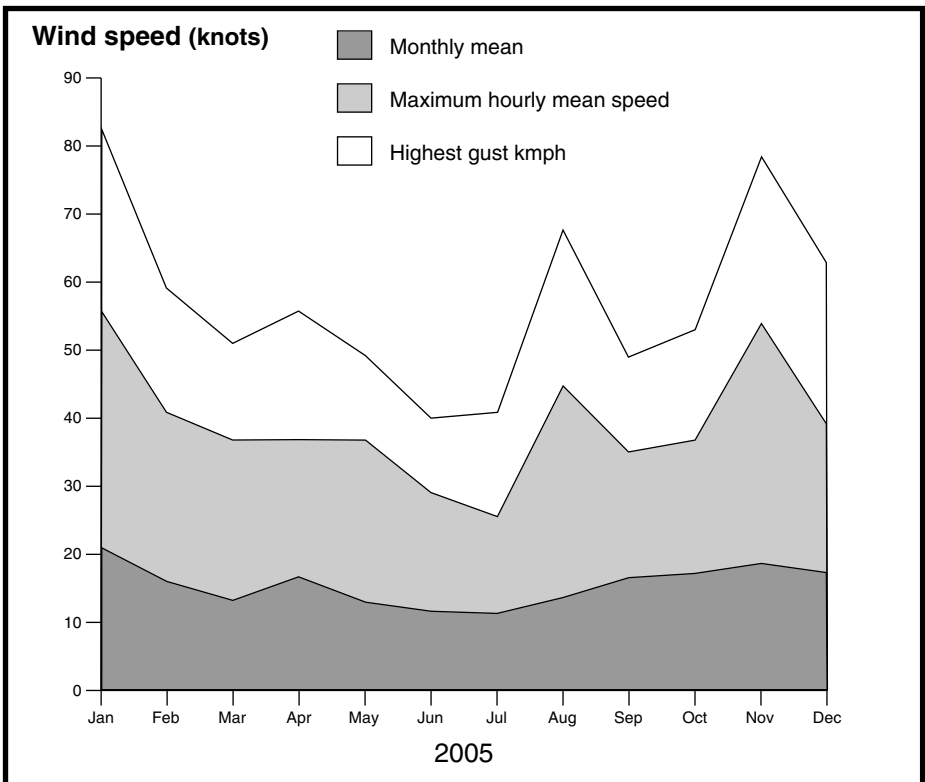
Sunshine and Rainfall (Monthly Totals)

	Sunshine (hours)			Rainfall (millimetres)		
	2005	Mean (1971-2000)	Extreme daily values (1922-1999)	2005	Mean (1971-2000)	Extreme daily values (1922-1999)
Jan	23.7	22.6	7 ('39)	194.2	135.4	43 ('37)
Feb	70.5	51.8	10 ('40)	117.3	107.8	47 ('51)
Mar	87.7	85.6	12 ('64)	121.9	122.3	47 ('52)
Apr	128.3	129.9	15 ('26)	71.1	74.2	37 ('40)
May	169.7	168.3	16 ('40,'57,'80)	80.7	53.5	50 ('66)
Jun	135.0	148.2	17 ('34)	95.4	58.6	37 ('81)
Jul	110.1	120.0	17 ('35)	58.4	58.5	94 ('35)
Aug	100.2	124.6	15 ('38)	89.2	78.3	47 ('45,'94)
Sep	90.3	100.8	13 ('24)	141.8	115.3	51 ('54)
Oct	71.1	65.4	10 ('37)	141.8	62.3	61 ('81)
Nov	49.3	33.0	7 ('61,'67)	152.6	152.4	71 ('49)
Dec	14.9	14.9	6 ('57)	107.7	150.0	68 ('95)
Year	1,050.8	1,065.1		1,372.1	1,168.6	



Wind Speed (knots)

	Monthly mean 2005	Maximum hourly mean speed 2005	Speed Year (1922-1999)		Highest gust Speed Year (1922-1999)	
Jan	21.2	56	73.7 ('53,'61)	83	109.4 ('60,'92)	
Feb	15.8	41	64.5 ('57,'81)	59	95.6 ('43,'57)	
Mar	13.7	37	61.0 ('67)	51	88.7 ('67)	
Apr	16.7	37	63.3 ('57)	56	89.8 ('57)	
May	13.1	37	50.7 ('82)	49	74.9 ('82)	
Jun	12.8	29	48.4 ('55)	40	70.2 ('55)	
Jul	12.4	26	46.1 ('40)	41	70.2 ('64)	
Aug	13.9	45	56.4 ('23)	68	79.4 ('23)	
Sep	16.4	35	67.9 ('78)	48	100.2 ('63)	
Oct	16.7	37	66.8 ('65)	53	103.6 ('80)	
Nov	18.0	54	58.7 ('38,'73)	78	92.1 ('36,'38)	
Dec	16.7	39	66.8 ('49)	63	103.6 ('56)	



Climatic Conditions 2005 (days)

	Rain	Hail or Ice Pellets	Snow or Sleet	Air Frost	Thunder	Gales	Fog
Jan	29	16	14	5	4	14	0
Feb	24	11	15	4	0	8	2
Mar	23	9	10	8	0	2	11
Apr	17	5	2	2	0	3	6
May	25	3	5	0	0	1	8
Jun	22	0	0	0	0	0	16
Jul	22	0	0	0	0	0	14
Aug	21	0	0	0	0	3	5
Sep	28	2	0	0	1	3	5
Oct	21	1	0	0	0	5	3
Nov	26	5	9	4	1	7	3
Dec	27	5	5	7	0	3	1
Total	285	57	60	30	6	49	74

Rain: precipitation 0.2 mm or more recorded in the 24 hour period commencing 09.00 hours GMT.

Hail or Ice Pellets: solid precipitation, of which the outer parts are clear ice observed at any time of day.

Snow or Sleet: snow or sleet observed at any time of day.

Air Frost: minimum air temperature less than 0.0 °C at any time of day.

Thunder: thunder heard at any time of day.

Gales: mean wind speed greater than or equal to 39.2 mph (34 knots) for at least 10 minutes.

Fog: visibility less than 1000 metres.

Source: The Met Office, Glasgow/Devon

Extreme Values 2005

Temperature (°C)

Maximum	4 September	17.4°C
Minimum	8/9 April & 16 December	-2.9°C

Sunshine (hours)

Sunniest Day	6 June	14.5 hours
Sunniest Month	May	169.7 hours

Rainfall (millimetres)

Wettest Day	31 August	34.4 mm
Wettest Month	January	194.2 mm
Driest Month	July	58.4 mm

Wind Speed (mph)

Highest Gust	12 January	96 mph
Windiest Month	January	14 gale days

Source: The Met Office, Lerwick

Ozone

Lerwick is one of only two stations in the UK where measurements of ozone are made, the other being Camborne in Cornwall. These stations are part of the Met Office's UK Upper Air Observing Network. Ground based Dobson Spectrophotometers are used daily to measure total ozone, the largest part of which exists in the stratospheric ozone layer (at a height of 8-30 km). At Lerwick ozone concentration profiles are also measured using balloon borne ozonesondes.

Total ozone levels are at their peak in the late winter and early spring. However, it is also at this time when man-made substances can lead to enhanced ozone depletion in the stratosphere. It is difficult to quantify these losses precisely since levels vary naturally by large amounts.

Stratospheric ozone acts as a shield by absorbing potentially harmful ultraviolet (UV) radiation which would otherwise reach the earth's surface. (It should not be confused with tropospheric ozone. Part of this is a pollutant formed in the lower atmosphere (troposphere) by the action of sunlight on other compounds such as those from car exhausts.)

High quality measurements over the last 20 years suggest a long term rate of decrease in total ozone over the UK of between 5-6% per decade. This is consistent with findings for other stations at similar latitudes in the northern hemisphere.

Ozone Values (Dobson Units)

	Monthly Mean		Monthly Mean (1981-1998)	Lowest Daily Value		Highest Daily Value	
	2004	2005		2004	2005	2004	2005
Jan	358	327	330.4	319	234	417	422
Feb	361	292	358.5	312	246	441	354
Mar	381	322	383.3	327	259	480	398
Apr	371	378	387.9	321	319	432	417
May**	—	378	376.1	—	324	—	428
Jun	366	322	358.5	325	279	443	372
Jul	344	326	341.2	282	296	375	345
Aug	311	311	322.1	272	252	355	344
Sep	287	276	299.4	224	237	326	326
Oct	269	250	286.8	189	199	318	325
Nov	271	299	279.3	219	273	336	343
Dec*	—	—	—	—	—	—	—

* December values are not available due to low elevation of the sun in mid-winter.

** Values for May 2004 are unavailable as the spectrophotometer used to make the measurements was taken to an international exercise.

Source: Department of the Environment, Food & Rural Affairs (DEFRA).

Population

After decades of decline the population of Shetland, which had fallen to nearly 17,000 in the mid-1960s, rose by 31% between 1971 and 1981 as a direct result of oil related activity. In the early 1980s the population fell due to out migration after the end of oil construction activity and difficulties at Sumburgh Airport. In the latter half of the 1980s and the early 1990s the population level became fairly stable. However, the 2001 Census recorded a significant decrease in population, and the mid-year estimates for 2003 continued the downward trend. The 2004/05 mid-year estimates have shown a slight reverse in this trend, with the population up since the 2003 mid-year estimates.

Population Breakdown by Age and Sex

Age group	1971			1981			1991			2005		
	M	F	Total	M	F	Total	M	F	Total	M	F	Total
0-4	710	680	1,390	888	890	1,778	830	797	1,627	641	569	1,210
5-9	715	680	1,395	901	881	1,782	815	743	1,558	696	699	1,395
10-14	620	595	1,215	959	913	1,872	903	837	1,740	842	773	1,615
15-19	585	550	1,135	907	846	1,753	831	790	1,621	718	658	1,376
20-24	610	515	1,125	886	791	1,677	838	757	1,595	564	451	1,015
25-29	565	530	1,095	1,006	852	1,858	883	785	1,668	636	602	1,238
30-34	505	470	975	1,052	874	1,926	857	792	1,649	737	744	1,481
35-39	485	465	950	857	782	1,639	917	795	1,712	806	819	1,625
40-44	475	445	920	706	577	1,283	933	787	1,720	911	864	1,775
45-49	565	515	1,080	571	518	1,089	767	713	1,480	771	757	1,528
50-54	405	495	900	503	520	1,023	614	556	1,170	802	774	1,576
55-59	530	555	1,085	542	516	1,058	500	491	991	854	689	1,543
60-64	490	610	1,100	385	488	873	439	454	893	648	649	1,297
65-69	440	580	1,020	443	510	953	415	474	889	510	485	995
70-74	345	450	795	371	512	883	295	439	734	361	408	769
75-79	205	355	560	239	411	650	261	396	657	258	371	629
80-84	120	245	365	157	259	416	165	314	479	192	331	523
85 +	60	160	220	64	191	255						
85-89							72	182	254	80	185	265
90 +							24	61	85	34	111	145
Total	8,430	8,895	17,325	11,437	11,331	22,766	11,359	11,163	22,522	11,061	10,939	22,000

Sources: 1971, 1981 and 1991 figures from Population Census.
2005 mid-year estimates from General Register Office for Scotland.

Population of Shetland by Area based on Census

	1931	1961	1971	1981	1991	2001
Bressay	452	269	251	334	352	384
Burra	767	648	565	850 *	929	850
Delting	958	598	580	2,110	1,861	1,630
Dunrossness	1,089	857	848	1,591	1,502	1,471
Fair Isle	108	64	65	69 *	67	69
Fetlar	217	127	88	101	90	86
Foula	118	54	33	45 *	42	32 *
Gulberwick/Quarff	1,518	385	171	579 *	398	662
Lerwick	4,221	5,913	6,127	6,899	7,336	6,830
Muckle Roe	n/a	103	94	101	115	104
Nesting	822	434	380	506	512	570
Northmavine	1,343	816	696	898	878	841
Papa Stour	100	55	24	35 *	35 *	24
Sandsting	1,552	957	873	1,002	891	945
Sandwick/Cunningsburgh	1,507	1,172	1,120	1,303 *	1,352	1,432
Scalloway**	n/a	n/a	n/a	1,160	802	812
Skerries	110	108	101	88 *	87	76
Tingwall	1,440	1,603	1,671	1,080	1,431	1,722
Trondra	91	20	17	88	117	133
Unst	1,341	1,151	1,127	1,140	1,055	720
Walls and Sandness	884	561	483	573	554	601
Whalsay	900	764	870	1,025	1,041	1,034
Yell	1,883	1,155	1,143	1,191	1,075	957
Total	21,421	17,814	17,327	22,768	22,522	21,988

* Estimated

** From 1931 to 1971 the population figures for Scalloway are included in the figures for Tingwall.

Populations were enumerated on a slightly different basis at the 1981 and 1991 Censuses, and are therefore not strictly comparable.

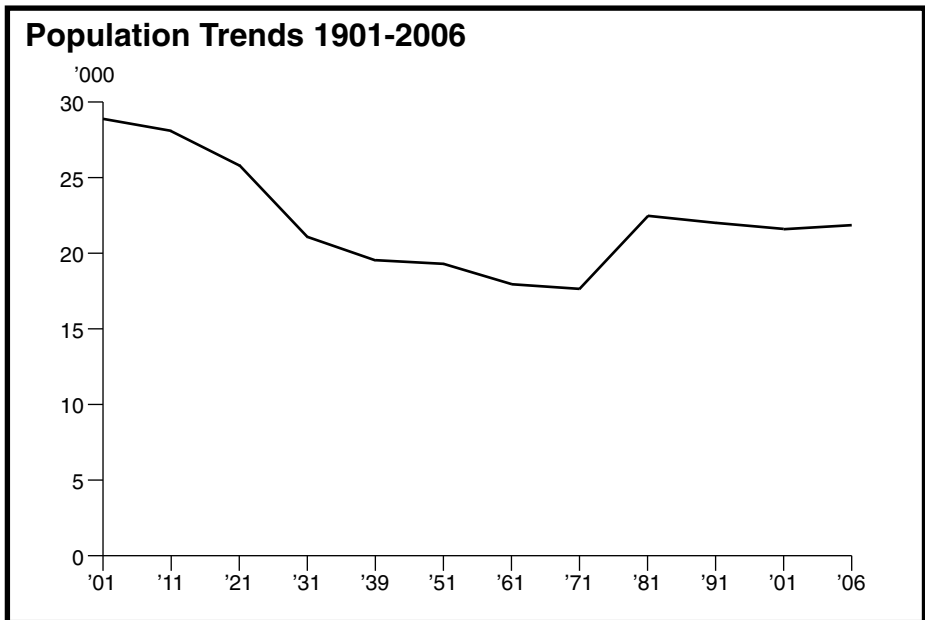
1981 Census – Resident Population **excluding** absent households.

1991/2001 Census – Resident Population **including** absent households.

Population by Doctor Registration Areas

	1991	1996	2000	2002	2003	2004	2006
Unst	900	862	716	672	671	639	587
Yell	1,158	1,133	1,034	1,036	1,031	1,019	1,022
Whalsay	1,136	1,110	1,093	1,094	1,097	1,091	1,122
Northmavine	700	676	699	671	668	676	699
Brae	2,775	2,733	2,444	2,358	2,468	2,449	2,401
Walls	665	695	685	672	664	693	673
Bixter	1,047	1,085	1,035	1,045	1,059	1,082	1,074
Levenwick	2,429	2,386	2,234	2,200	2,584	2,596	2,619
Scalloway	2,677	2,670	2,580	2,591	2,761	2,792	2,794
Lerwick	9,373	9,617	9,622	9,590	9,016	9,028	9,044
Total	22,860	22,967	22,142	21,929	22,019	22,065	22,025

Source: Shetland Health Board



Source: General Register Office, Scotland

Economy and Industry

Economic Performance

An economic survey conducted by Fraser of Allander Institute in 1998 calculated the overall value of the Shetland economy to be £761,261,000. A subsequent economic survey conducted by University of Aberdeen Business School and AB Associates Ltd. in 2005 calculated the overall value of the Shetland economy – based on the combined total output of all economic sectors – to be £705,705,000. The same survey calculated Shetland's Gross Regional Domestic Product to be £333,403,150. This equates to a GRDP per capita of £15,245. The table below illustrates the contribution made by some sectors in recent years.

Value of Key Sectors of the Shetland Economy (£ m)

	1996	2000	2001	2002	2003
Oil Production Operations	50.4	53.0	116.1	65.0	57.7
Combined Fisheries Output	97.8	202.8	223.9	208.2	243.1
Agriculture	14.3	11.7	12.4	13.1	13.1
Knitwear	4.0	5.0	2.5	3.0	2.5
Tourism	11.3	12.0	12.75	12.6	12.6
Shetland Islands Council	111.1	124.7	150.5	133.4	127.0
Total	288.9	409.2	518.1	435.3	456.0

As the role of the oil industry declines in Shetland, it is important that its value in economic terms is replaced. The approach taken has been to identify and encourage potential development opportunities in the traditional industries. At present this approach would seem to be succeeding and although the relative value of the oil industry has declined since its peak in the early 1980s, it still provides a significant input to the local economy which it is hoped will continue well into the future. Operations significantly increased during 2001 due to the Gas Plant Overhaul and Oil Recovery programme which took place at the Sullom Voe Oil Terminal.

Traditional Industry Output Values (£ m)

	1982/83	1985/86	1992	1996	2001	2002	2003
Fish Catching	11.2	17.0	20.0	97.8	223.9	208.2	243.1
Fish Processing	12.7	15.0	25.0				
Salmon Farming	0.0	3.3	33.0				
Agriculture	5.8	7.8	11.0	14.3	12.4	13.1	13.1
Knitwear	4.2	6.4	4.0	4.0	2.5	3.0	2.5
Tourism	3.5	5.9	10.0	11.3	12.75	12.6	12.6
Total	37.4	55.4	103.0	127.4	251.6	236.9	271.3

Source: Economic Development Unit, SIC; Review of the Shetland Economy, AB Associates Ltd.; Shetland Regional Accounts 2003, University of Aberdeen Business School & AB Associates Ltd.

Employment

Economic Activity in Shetland

	1981			1991			2001		
	Male	Female	Total	Male	Female	Total	Male	Female	Total
A	11,437	11,331	22,768	11,359	11,163	22,522	11,071	10,917	21,988
B	8,511	8,493	17,004	8,653	8,633	17,286	8,100	7,598	15,698
C	7,056	3,901	10,957	6,906	4,541	11,447	6,569	5,220	11,789
D	6,721	3,743	10,464	6,382	4,309	10,691	6,337	5,043	11,380
E	335	158	493	387	149	536	218	159	377
F	82.9%	45.9%	64.4%	79.8%	52.5%	66.2%	84.1%	68.7%	75.1%

A – Total Population (Census); B – 1981 & 1991 - Total Population 16+; 2001 - Total Population 16-74;
 C – Resident: Economically Active; D – Resident: In Employment;
 E – Resident: Out of Employment; F – % Economically Active (of 16+ population)
 Source: Population Census

Unemployment

June	1971	1976	1981	1986	1991	1996	2001	2003	2004	2005
Shetland %	3.8	3.5	5.3	6.3	3.6	3.8	1.4	2.0	1.8	1.8
Actual Figures Jan:	360	n/a	402	805	354	438	266	291	239	258
July:	170	n/a	457	771	314	466	192	256	261	237
Orkney %	3.9	3.4	9.0	11.7	5.5	4.3	2.2	1.5	1.8	1.3
Western Isles %	18.0	14.5	20.1	19.1	14.5	10.6	4.9	3.4	3.4	3.2
Aberdeen %						3.7	1.7	1.8	2.0	1.7
Aberdeenshire %	3.7*	3.3*	7.6*	8.8*	4.0*	4.2	2.1	1.4	1.3	1.1
Scotland %	5.5	6.7	13.5	14.0	9.0	7.7	4.2	3.2	2.9	2.7

* Prior to 1996 these figures refer to Grampian Region.

Source: JobCentre Plus

School Leavers' First Destinations 2004/05

School	Full-time Higher Education	Full-time Further Education	Training	Employment	Other*	Total Leavers
Aith Junior High	0	2	0	1	0	3
Anderson High	70	27	1	109	24	231
Baltasound Junior High	0	0	0	2	0	2
Brae High	16	8	3	21	9	57
Mid Yell Junior High	0	0	0	2	1	3
Sandwick Junior High	0	2	0	11	2	15
Scalloway Junior High	0	2	0	7	1	10
Skerries School	0	0	0	0	0	0
Whalsay School	0	0	0	3	0	3
Total	86	41	4	156	37	324
% Leavers	26.5	12.7	1.2	48.1	11.4	100.0

* Includes unemployed

Source: Careers Scotland

Employment in Shetland

	1971(a)	1977(b)	1981(c)	1983(d)	1991(d)	1997(d)	2000(d)	2003(e)
Primary	279	322	938	1,276	1,258	1,465	1,055	1,280
Manufacturing	1,335	1,125	940	923	1,121	1,322	1,052	1,105
Construction	489	1,004	906	763	817	946	1,375	928
Services	2,885	4,400	6,189	5,779	5,817	8,125	8,416	8,957
Self Employed	1,445	1,450	1,452	1,455	1,691	–	–	–
Total	6,433	8,301	10,425	10,196	10,704	11,858	11,898	12,270

Statistics for Self-Employed are now included in the figures for Primary, Manufacturing, Construction and Services.

These figures do not include agricultural employment.

Sources: (a) 1971 Population Census and Department of Employment; (b) Department of Employment; (c) Research and Development Department, SIC estimate; (d) Development Department, SIC; (e) Economic Development Unit, SIC

Employment Distribution (June 2003) *

Area	In Employment				Subtotals					
	Male		Female		Male	Female	FT	PT	Total	FTE**
	FT	PT	FT	PT						
Bressay	46	8	8	18	54	26	54	26	80	63
Burra & Trondra	55	6	8	20	61	28	63	26	89	72
Delting	821	134	244	243	955	487	1,065	377	1,442	1,191
Dunrossness #	136	51	72	125	187	197	208	176	384	267
Fetlar	3	4	8	11	7	19	11	15	26	16
Gulb, Quarff & Cunn †	57	6	9	60	63	69	66	66	132	88
Lerwick	2,642	592	1,770	2,187	3,234	3,957	4,412	2,779	7,191	5,338
Nesting & Lunnasting	39	8	13	15	47	28	52	23	75	60
Northmavine	55	11	22	90	66	112	77	101	178	111
Sandness & Walls ∞	96	12	40	103	108	143	136	115	251	174
Sandsting & Aithsting	165	21	59	87	186	146	224	108	332	260
Sandwick	64	21	40	58	85	98	104	79	183	130
Scalloway	215	27	157	135	242	292	372	162	534	426
Skerries	22	5	4	16	27	20	26	21	47	33
Ting, White & Weis ◇	130	29	34	74	159	108	164	103	267	198
Unst	150	38	74	138	188	212	224	176	400	283
Whalsay	195	9	33	100	204	133	228	109	337	264
Yell	131	31	45	115	162	160	176	146	322	225
Total	5,022	1,013	2,640	3,595	6,035	6,235	7,662	4,608	12,270	9,199

Source: Economic Development Unit, SIC

* It is important to note that this table reflects the areas where respective companies and organisations are based, not necessarily where employees are based. Also, these figures do not include agricultural employment.

** Full-Time Equivalent jobs – 3 PT jobs = 1 FTE

Includes Fair Isle

† Gulberwick, Quarff and Cunningsburgh

∞ Includes Papa Stour and Foula

◇ Tingwall, Whiteness and Weisdale

Fisheries

Fish Landings in Shetland

	White Fish		Shell Fish		Sandeels	
	Tonnes	£	Tonnes	£	Tonnes	£
1971	17,954	1,057,691	783	159,370	0	0
1976	13,457	2,587,548	588	202,339	18,548	515,398
1981	11,444	3,212,175	695	328,200	40,731	1,173,560
1986	18,941	9,979,705	736	630,639	11,960	359,162
1991	10,603	10,823,185	1,004	1,402,010	8,249	392,776
1996	15,810	13,090,578	1,725	1,784,000	9,008	489,110
1999	15,807	11,586,405	1,674	2,027,324	6,775	282,638
2000	18,499	12,185,057	1,573	1,591,563	9,654	399,949
2001	10,868	12,739,484	1,234	1,633,827	1,264	55,081
2002	9,345	9,768,513	1,136	1,694,689	1,174	54,866
2003	6,544	7,047,270	1,069	1,523,167	186	10,239
2004	7,831	9,041,518	1,137	1,705,539	566	34,177
2005	8,237	11,569,111	1,059	1,928,512	0	0

White fish, shell fish and sandeel landings are by UK vessels only. Herring, mackerel and other pelagic statistics are by UK and foreign vessels.

Weight and Value of Catch by Species for 2005 (all vessels)

Species	Weight (Tonnes)	Value (£)	Species	Weight (Tonnes)	Value (£)
Anglerfish (Monks)	1,338	3,895,973	Megrims	282	561,771
Blue Ling	<1	479	Nephrops (Norway Lobster)	223	716,817
Cattfish	16	27,231	Other flatfish	4	4,206
Cod	978	2,069,360	Other or mixed Demersal	147	24,552
Crabs - Brown (Edible)	62	69,007	Periwinkles	<1	70
Crabs - Green	<1	203	Plaice	129	121,048
Crabs - Velvet (Swim)	2	3,738	Pollack (Lythe)	65	95,650
Dabs	<1	5	Redfish	2	2,592
Dogfish - Spur	36	59,031	Roes	5	11,478
Dogfish - Other	1	590	Saithe (Coalfish)	776	370,264
Eels	1	520	Scallops	711	990,565
Eels - Conger	3	1,697	Scallops - Queen	5	2,585
Greenland Halibut	<1	1,271	Sharks	<1	1,483
Gurnards - Red	4	1,020	Skates and Rays	122	129,011
Gurnards - Other	9	3,076	Sole - Lemon	36	82,643
Haddock	3,298	3,062,606	Squid	55	142,286
Hake	34	43,886	Turbot	4	27,895
Halibut	15	85,882	Tusk	16	9,010
Herring	26,412	5,724,696	Whiting	725	600,794
John Dory	2	2,093	Whiting - Blue	31,358	1,509,625
Ling	401	457,382	Witches	44	49,901
Lobsters	<1	3,242			
Mackerel	66,950	40,794,629	Total	133,989	61,761,862

Herring		Mackerel		Other Pelagic	
Tonnes	£	Tonnes	£	Tonnes	£
22,813	584,148	190	3,296	116	2,126
4,010	461,243	775	38,623	973	64,895
871	57,158	826	49,560	0	0
51,230	5,216,706	226	29,558	313	31,302
41,684	3,963,148	38,514	4,829,790	5,124	284,674
27,440	2,286,944	5,995	1,957,673	20,004	1,184,439
16,221	1,539,071	15,765	3,725,092	33,560	1,337,352
11,390	1,113,585	21,862	5,838,570	25,733	1,083,675
12,087	2,977,278	25,374	11,014,650	29,266	1,502,869
16,823	2,749,345	48,482	22,586,256	16,525	1,138,626
19,590	2,345,649	47,934	19,961,840	32,554	2,295,523
19,744	2,630,949	50,200	25,086,377	34,582	1,993,965
26,412	5,724,696	66,950	40,794,629	31,358	1,509,625

All Fish Landed in Shetland 2005

	Demersal		Pelagic		Shell Fish	
	Tonnes	£	Tonnes	£	Tonnes	£
Jan	500	714,094	26,327	11,381,291	32	62,909
Feb	631	650,234	23,728	8,846,267	65	115,741
Mar	856	1,024,227	17,164	2,339,365	81	140,758
Apr	573	910,952	10,244	444,468	95	145,993
May	493	817,565	2,454	124,338	113	206,441
Jun	680	960,628	1,469	305,840	104	182,347
Jul	612	993,857	9,011	1,994,461	73	121,080
Aug	742	1,124,469	13,691	3,002,531	94	173,085
Sep	1,078	1,337,735	1,826	668,867	76	125,641
Oct	886	1,109,680	18,805	18,921,522	91	161,184
Nov	909	1,272,353	0	0	127	266,459
Dec	535	888,607	0	0	108	226,876
Total	8,495	11,804,401	124,719	48,028,950	1,059	1,928,514

Included in Whitefish Total

	1991		1996		2001		2005	
	Tonnes	£	Tonnes	£	Tonnes	£	Tonnes	£
Cod	2,220	2,744,602	3,683	3,200,233	1,983	3,115,230	978	2,069,360
Haddock	2,140	2,447,125	3,347	1,952,526	2,880	2,768,423	3,298	3,062,606
Whiting	2,463	1,437,210	1,790	966,244	1,206	1,001,226	725	600,794
Monkfish	1,429	3,554,426	2,676	5,047,928	1,325	3,753,661	1,338	3,895,973

Average Quay Prices per tonne (£)

	1981	1986	1991	1996	2001	2004	2005
Cod	337.31	828.42	1,236.31	868.92	1,570.87	2,038.00	2,117.00
Haddock	274.25	565.40	1,143.52	583.37	961.40	839.00	929.00
Whiting	270.31	506.43	583.52	539.80	830.47	1,017.00	829.00
Monkfish	584.69	1,507.60	2,487.35	1,886.37	2,833.34	2,172.00	2,911.00

Total Wet Fish Landed in Shetland

	1981	1991	1996	2001	2004	2005
Tonnes	53,872	104,187	78,627	77,556	112,466	133,214
£	4,492,453	21,338,570	20,907,671	28,284,281	38,819,465	59,833,350

Landings by Shetland Vessels outwith Shetland

	1971	1981	1986	1991	1996	2001	2004	2005
Tonnes	3,322	28,805	39,735	38,953	63,375	61,210	44,581	113,490
£	382,056	2,741,617	5,554,051	8,077,129	20,727,987	23,075,860	11,953,783	46,169,017

Distribution of Licensed Vessels by District

	1971	1981	1986	1991	1996	2001	2003	2004	2005
Creek 1 — South Mainland		13	11	5	3	13	17	19	20
Creek 2 — Lerwick/Bressay		13	17	13	7	39	40	36	38
Creek 3 — Whalsay		49	33	22	21	37	42	34	34
Creek 4 — Out Skerries					4	4	8	9	9
Creek 5 — Yell/Fetlar/Unst		29	14	7	5	25	23	20	19
Creek 6 — Northmavine		14	7	4	4	8	9	11	11
Creek 7 — Central Mainland		—	—	0	5	8	14	12	12
Creek 8 — West Mainland		30	28	17	10	28	26	25	22
Creek 9 — Scalloway/Burra/Trondra		68	45	41	32	60	55	42	40
Total		216	155	113	91	226	235	208	197

Licensed Vessel Size

	Over 80ft	40-80ft	Under 40ft	Total
1971	0	64	152	216
1976	1	71	148	220
1981	8	52	95	155
1986	16	36	76	128
	Over 25m	10-25m	Under 10m	Total
1991	20	46	23	89
1996	23	57	146	226
2001	23	35	177	235
2004	15	26	161	202
2005	14	25	158	197

Source: Sea Fisheries Statistics Unit, Scottish Executive Environment & Rural Affairs Department (SEERAD)

Employment in the Shetland Fishing Industry *

	1971	1976	1981	1986	1991	1996	2001	2003	2005
Catching**	636	652	542	507	458	502	352	299	245
Ancillary	171	225	243	265	330	301	220 *	204 [†]	157 [†]
Total	807	877	785	772	788	803	572	503	402

* Some fishermen serve on more than one vessel

** Includes both full-time and part-time

† Figures were obtained using multipliers from Fraser of Allander Input-Output Table, 1999.

Sources: Sea Fisheries Statistics Unit, Scottish Executive Environment & Rural Affairs Department (SEERAD), Shetland Fisheries Training Association, and Economic Development Unit, SIC

[†] Estimated

Fisheries Protection

The enforcement of UK and EU Common Fisheries Policy regulations is the responsibility of the Scottish Fisheries Protection Agency through inspections and observations by its protection vessels and sightings by SFPA surveillance aircraft.

The statistics below relate to activity in UK waters north of 59°30'N, and between 4°W and the UK/Norwegian median line.

Vessel Nationality	Fisheries Protection Vessel Boardings				Fisheries Protection Vessel Sightings				Fisheries Protection Aircraft Sightings			
	1996	2001	2004	2005	1996	2001	2004	2005	1996	2001	2004	2005
Belgium	2	0	0	0	3	0	0	0	12	0	0	0
Denmark	31	14	17	4	52	22	34	6	141	125	180	98
Eire	0	3	2	0	26	5	8	7	60	38	65	53
Faroe	3	2	0	0	8	9	4	1	12	20	30	20
France	19	20	11	8	58	41	38	19	154	116	180	147
Germany	17	11	3	9	30	15	12	17	78	66	42	90
Iceland	0	0	0	0	1	0	0	0	4	3	1	0
Netherlands	6	8	8	9	3	16	15	12	16	30	69	78
Norway	74	49	37	36	134	125	116	92	419	296	482	612
Spain	0	0	0	0	0	0	0	0	2	2	3	2
Sweden	0	0	0	0	1	4	0	0	8	28	26	22
UK	301	321	111	143	1,047	1,273	538	463	3,608	2,967	2,604	2,711
Other	0	0	0	2	1	3	0	0	4	10	2	26
Total	453	428	189	211	1,364	1,513	765	617	4,518	3,701	3,684	3,859

Source: Scottish Fisheries Protection Agency

Fish Processing

Fish Processing

	1977	1981	1986	1991	1996	2001	2003	2004	2005
Firms	11	10	11	14	16	20	16	18	22
Factories	15	13	14	15	17	21	16	17	22

Processing Lines

	1977	1981	1986	1991	1996	2001	2003	2004	2005
White Fish	11	10	12	5	6	10	8	9	10
Herring and Mackerel	3	2	1	1	1	7	6	8	8
Fish Meal Plants	3	1	2	1	1	1	1	1	1
Shellfish	3	2	2	3	3	8	7	10	13
Salmon	0	0	0	7	6	14	9	10	10
Smoking	3	2	2	3	3	7	6	7	8

Value (estimated turnover £ m)

	1991	1996	1999	2001	2002	2003	2004	2005
	25.00	51.50	78.44	106.00	102.00*	117.00	122.00*	105.00

Source: Seafood Shetland

* Estimated

Employment

	1981	1986	1991	1996	2001	2002	2003	2004	2005
Full-time				328	448	383	410	290	268
Part-time	480	567	578	234	209	123	38	82	110
Total	480	567	578	562	657	506	448	372	378

Sources: Seafood Shetland, Shetland Fisheries Training Association and Economic Development Unit, SIC

Shellfish Aquaculture

Shellfish Growers

	2004	2005
Growers*	29	27

* only includes members of Seafood Shetland

Production

	2004	2005
Mussels (tonnes)	1,646	2,150
Scallops (tonnes)	1.5	–
Queen Scallops (tonnes)	2.5	4
Oysters (no. of shells)	1,000	1,200

Employment

	2004	2005
Full-time	22	32
Part-time	40	28
Total	62	60

Value

	2004	2005
UK Sales Value (£m)	1.7	2.3

Source: Seafood Shetland

Aquaculture

Salmon Farms

	1984	1986	1991	1996	2001	2003	2005
Companies Established	5	13	0	1	0	0	0
Companies Producing	4	27	59	46	46	n/a	16
Total	9	40	59	47	46	n/a	16

Production

	1984	1986	1991	1996	2001	2004	2005
Smolts Introduced (x000)	294	935	4,643	6,234	17,395	12,372	10,104
Production (tonnes)	50	1,500	10,614	19,710	43,871	53,101	37,226
Average Tonnes per Farm	13	56	180	428	954	n/a	2,327

Employment

	1986	1991	1996	2000	2001	2002	2003
Direct	158	304	323	379	387	389	371
Ancillary	168	482	360	574	659	758	794
Total	326	786	683	953	1,046	1,147	1,165

Sources: Shetland Aquaculture; Scottish Executive Environment & Rural Affairs Department (SEERAD) and Economic Development Unit, SIC

Manpower and Production by Region

Region		Staff		Annual Prod. (tonnes)	Prod. (t/man)	Grilse		Pre-salmon		Salmon	
		F/T	P/T			Tonnes	Mean wt (kg)	Tonnes	Mean wt (kg)	Tonnes	Mean wt (kg)
Shetland	1991	202	102	10,614	35	826	2.8	4,322	3.1	5,466	3.9
	1996	209	114	19,710	61	2,042	2.8	8,814	3.9	8,854	4.8
	2001	227	52	39,745	142	4,905	3.7	16,441	4.3	18,269	4.4
	2003	222	48	63,948	237	3,898	3.9	21,698	4.5	38,352	4.5
	2004	185	27	53,101	250	6,732	4.2	20,543	4.6	25,826	4.5
All Scotland	1991	1,014	272	40,593	32	7,449	2.1	13,577	2.6	19,567	3.2
	1996	1,151	242	83,121	60	25,776	3.0	32,222	3.8	24,485	4.5
	2001	1,066	191	138,520	110	42,066	3.8	54,473	4.7	40,754	4.5
	2003	1,066	151	166,339	142	32,977	3.8	63,228	4.5	76,892	4.6
	2004	1,019	142	158,099	136	27,710	4.1	58,082	4.5	71,988	4.6

Source: Scottish Executive Environment & Rural Affairs Department (SEERAD)

Agriculture

Main and Minor Holdings

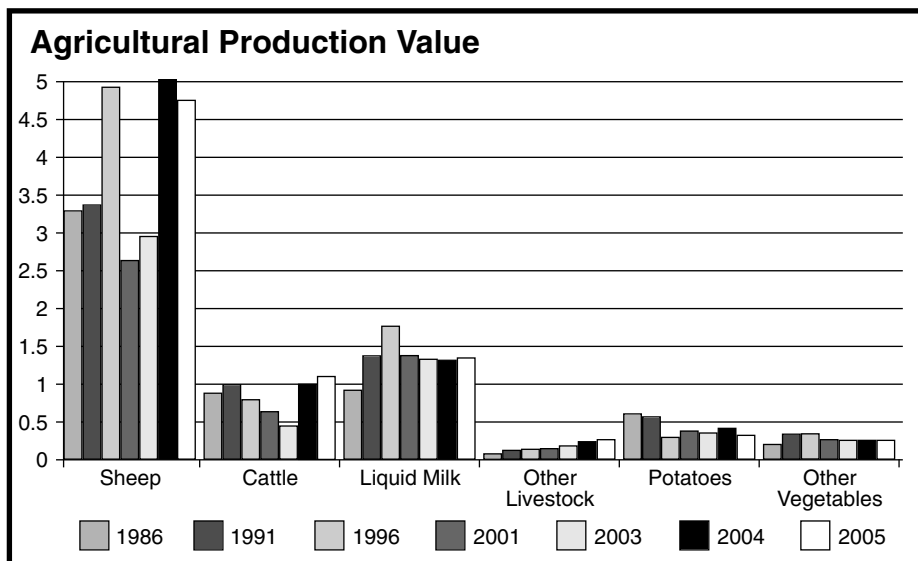
	1971	1981	1991	2001	2004	2005
Land Use (ha):						
Tillage	1,410	1,062	740	437	353	369
Grassland and Crops	8,407	8,400	14,304	22,016	23,287	23,940
Rough/Common Grazing	129,019	133,160	130,943	124,021	123,067	122,438
Total Area Rented	38,130	36,046	36,781	43,060	42,551	43,444
Total Area Owned	28,161	30,368	33,840	35,622	36,522	36,209
No of Holdings	2,439	2,240	2,311	2,076	1,990	1,986
No of Common Grazings	93	93	100	141	145	155
Area Under Crops (ha):						
Grass (excl Rough Grazings)	6,998	7,338	13,563	21,580	22,934	23,571
Barley and Oats	857	511	214	50	66	65
Turnips and Swedes	134	103	106	40	48	45
Kale and Cabbage	73	34	30	15	11	10
Potatoes	256	232	144	53	46	41
All Other Crops	17	25	126	112	86	89
Livestock:						
Beef Cows and Heifers	2,492	1,896	2,129	2,172	2,263	2,348
Dairy Cows and Heifers	791	593	655	617	660	547
Total Cattle	6,945	5,103	5,701	5,756	6,110	6,189
Breeding Ewes and Gimmers	n/a	n/a	210,630	215,480	199,163	186,011
Total Sheep	264,779	297,558	387,468	393,686	362,961	343,407
Pigs	9	83	28	112	38	43
Poultry	12,950	8,672	4,428	4,972	3,965	4,502
Registered Slaughterhouses	9	8	4	3	3	3
Sheep Slaughtered	8,417	9,592	8,712	3,520	4,198	5,391
Cattle Slaughtered	485	278	339	76	299	282
Pigs Slaughtered	0	0	33	167	314	188
Sheep Exported	43,464	60,542	99,404	114,251	128,139	124,246
Cattle Exported	1,947	2,066	2,117	1,031	1,763	2,059
Ponies Exported	417	407	239	232	198	261
Pigs Exported	0	0	0	0	6	16
Wool Production (est kg)	218,000	245,000	337,000	323,220	285,000	279,017 *
Milk:						
Dairy Units	23	23	16	7	6	6
Milk Production (litres)	1,428,975	2,069,550	2,584,564	2,410,045	2,295,510	2,298,448
Employment:						
F/T and P/T Employees	222	204	244	336	272	303
F/T and P/T Occupiers	439	457	637	599	538	511
Others (including occupiers less than half time, wives/husbands of occupiers and casual/seasonal labour)	584	718	1,591	1,655	1,610	1,578

Sources: Scottish Executive Environment & Rural Affairs Department (SEERAD), The Meat Hygiene Service, Lerwick Port Authority, Shetland Farm Dairies Ltd. and Shetland Wool Brokers.

* Estimated

Production

Value (estimated £m)	1986	1991	1996	2001	2003	2004	2005
Sheep	3.28	3.35	4.93	2.63	2.99	5.06	4.77
Cattle	0.86	1.00	0.73	0.64	0.46	1.02	1.13
Liquid Milk	0.90	1.40	1.74	1.43	1.36	1.34	1.37
Other Livestock (inc eggs)	0.11	0.12	0.13	0.14	0.17	0.22	0.26
Potatoes	0.65	0.58	0.27	0.43	0.34	0.38	0.33
Other Vegetables	0.22	0.35	0.36	0.26	0.25	0.25	0.25
Total	6.02	6.80	8.16	5.53	5.57	8.27	8.11



Source: Economic Development Unit, SIC

SEERAD & EU Assistance (£m)

	1986	1991	1996	2001	2004	2005
Hill Livestock Compensatory Allowance (HLCA)	1.33	1.61	1.25	–	–	–
Annual Premium Schemes	0.89	3.29	4.71	3.04	4.08	4.28
Environmentally Sensitive Area (ESA)	–	–	0.13	2.01	2.29	2.21
Less Favoured Areas Support Scheme (LFASS)	–	–	–	1.92	2.04	2.04
Total Assistance	2.22	4.90	6.09	6.97	8.41	8.53
Total Production Value and Value of Assistance	8.24	11.70	14.25	12.50	16.68	16.64

Source: Scottish Executive Environment & Rural Affairs Department (SEERAD)

Shetland Islands Council Charitable Trust

Assistance to Shetland Agriculture

As part of Shetland Islands Council's Agricultural Strategy, the SIC Charitable Trust operates an Agricultural Loan Scheme which started in September 1982. The following table summarises the salient features of 433 agricultural loans approved up to and including the Trust's meeting of 31 December 2005.

Development Projects

Type of Project	Numbers	Hectares	Metres	Gross Cost £
Drainage/Ditching		98	392,287	353,600
Fencing		219	539,508	1,077,980
Roads			30,977	213,390
Re-seeding		4,054.46		1,383,684
Buildings				5,651,908
Machinery				2,388,309
Livestock: Sheep	19,889			565,822
Cattle	837			470,565
Pigs	133			6,300
Hens	300			594
Quota: Sheep	7,724			181,723
Cattle	354			97,066
Milk (litres)	1,248,336			484,492
Land Purchased/Assigned		6,017.46		2,197,523
Emergency Stockpile				32,000
Other				284,054
Inflation				316,249
Total Gross Cost				15,705,259

Financed by:	Grants	4,742,954
	Personal Contributions	2,501,984
	Loans	8,460,321

Total Funding	15,705,259
----------------------	-------------------

Source: Shetland Charitable Trust

Tourism

VisitShetland Bed Spaces

Type of Accommodation	1976	1981	1986	1991	1996	2001	2004	2005
Hotels Lerwick	149	231	272	294	296	319	338	328
Hotels Country	292	342	310	301	295	225	251	215
Guest Houses Lerwick			29	31	75	87	116	137
Guest Houses Country			124	97	95	60	44	48
Bed & Breakfast Lerwick	206	103	71	93	65	80	35	40
Bed & Breakfast Country	154	203	107	208	143	142	149	128
Self Catering Lerwick				23	38	22	50	101
Self Catering Country	169	271	285	515	383	300	391	364
Hostels Lerwick				48	64	60	60	64
Hostels Country	76	81	146	99	61	59	58	35
Camp Sites Lerwick				28	60	n/a	n/a	60
Camp Sites Country	0	0	117	42	39	60	100	144
Böds	0	0	0	0	63	71	71	76
Total	1,046	1,231	1,461	1,779	1,677	1,519	1,663	1,740

Tourist Information Centre Enquiries and Bookings

	1981	1986	1991	1996	2001	2003	2004	2005
Enquiries	1,696	6,167	8,960	6,877	n/a	15,106	15,747	18,670
Advance Bookings	101	220	252	383	869	500	407	353
Immediate Bookings	412	997	1,435	927	492	445	478	185

Source: VisitShetland

Employment

	1978	1981	1986	1991	1994	1997	2000	2003
Hotel and Guest Houses	161	233	280	356	340	344	314	313
Bed & Breakfast Accom.	n/a	n/a	40	81	40	52	40	23
Self Catering, Cottages, etc.	n/a	n/a	64	89	28	62	67	36
Total	161	233	384	526	408	458	421	372

Source: Economic Development Unit, SIC

Total Visitor Expenditure in Shetland (£ m)

	1982	1986	1991	1996	1998	1999	2001	2003
	3.6	6.9	10.0	11.3	12.0	14.4	11.9	13.0

Visitors include both tourists and business visitors. Expenditure includes accommodation, and any goods and services purchased while in Shetland.

Sources: Shetland Visitor Survey 1995, 2000, Economic Development Unit, SIC

Top Visitor Attractions in Shetland

Free Attractions	2003	2004	2005
Shetland Museum	34,555	26,474	n/a
RSPB Sumburgh Head Reserve	28,000	30,000	30,000
Bonhoga	12,924	12,726	14,500
Shetland Jewellery	6,859	9,293	8,084
Hoswick Visitor Centre	6,531	9,336	6,826
Tangwick Haa Museum	3,844	4,627	4,500
Island of Mousa Boat Trips	4,861	4,509	4,141
Croft House Museum	4,524	5,102	3,558
Old Haa	2,420	3,109	3,308
Muness Castle	3,864	3,353	3,216
Hermaness Visitor Centre	1,800	1,832	1,691
Burland Croft Trail	800	1,500	1,500
Bod of Gremista	785	709	604

Paid Attractions	2003	2004	2005
Jarlshof	10,987	15,320	13,641
Unst Heritage Centre	2,758	2,724	2,812
Unst Boat Haven	2,721	2,650	2,672
Quendale Water Mill	2,015	2,664	2,270
Islesburgh Summer Exhibition	1,355	2,125	1,907
Island of Noss	1,551	1,266	1,421
Up-Helly-Aa Exhibition	1,000	1,200	1,200
Fetlar Interpretive Centre	1,360	1,072	1,082
Hanseatic Booth, Whalsay	230	225	212

Source: Visit Shetland and individual attractions

Cruise Liner Passengers (Lerwick Harbour)

1981	1986	1991	1996	2001	2002	2003	2004	2005
3,564	6,279	5,240	12,852	11,601	10,864	16,008	20,752	17,352

Cruise Liner Arrivals (Lerwick Harbour)

1988	1991	1996	2001	2002	2003	2004	2005
20	21	35	42	37	48	47	48

Source: Lerwick Port Authority

Shetland Mini-Cruise Passengers*

1976	1981	1986	1991	1996	1998	1999	2003	2004
1,390	3,964	1,768	2,014	1,038	1,201	867	13	429

Orkney and Shetland Mini-Cruise*

1996	1998	1999	2003	2004
2,215	1,652	1,474	919	1,537

* 2000-2002 figures are unavailable due to NorthLink taking over the service from P&O Ferries.
Source: P&O Scottish Ferries Ltd., Orkney and Shetland Touring Co. Ltd.

Smyril Line (Summer Service only)

Passengers					
Lerwick inbound	2004	2005	Lerwick outbound	2004	2005
Tórshavn	4,014	2,711	Tórshavn	3,015	1,893
Bergen	2,877	1,929	Bergen	3,610	2,417
Hantsholm	74	764	Hantsholm	677	914
Seyðisfjorður	n/a	261	Seyðisfjorður	n/a	237
	6,965	6,095		7,302	5,915
Vehicles					
Lerwick inbound	2004	2005	Lerwick outbound	2004	2005
Tórshavn	912	471	Tórshavn	573	334
Bergen	721	566	Bergen	896	618
Hantsholm	10	233	Hantsholm	156	251
Seyðisfjorður	n/a	691	Seyðisfjorður	n/a	691
	1,643	1,531		1,625	1,440

Source: Smyril Line

Origin of Visitors 2000

	%	Overseas Visitors	%
Scotland	44	Norway, Sweden, Finland	3.5
Rest of Britain	36	USA/Canada	3.8
Overseas	20	Australia/New Zealand	2.7
	100	Germany	2.1
		Rest of Europe	3.7
		Faroe	1.2
		Other	3.1
		Total	20.1

Source: Shetland Visitor Survey 2000, Macpherson Research, Inverness

Oil

The North Sea oil industry has long been recognised as a key component of not only Shetland's economy but the economy of the UK as a whole. At a local level this reflects in three main areas: Sullom Voe Oil Terminal, the offshore oil and gas fields and the services related to both of these.

Sullom Voe Oil Terminal

The terminal is situated at Calback Ness on a site of approximately 400 hectares (1,000 acres) on the shores of Sullom Voe, 46km (29 miles) north of Lerwick. BP Exploration Operating Company Ltd operates the terminal on behalf of companies participating in the Brent and Ninian pipeline groups. The terminal currently has a throughput design capacity of 1.2 million barrels of crude oil per day and reached a peak in 1984 with a total receipt of 439,434,656 barrels (58,328,785 tonnes).

Exploration and Development

- 1970** – The exploration phase for oil and gas offshore Shetland began when the Government allocated the first Licence Blocks.
- 1975** – The development phase including the laying of the Brent and Ninian pipeline systems and the floatout of the Beryl and Brent field production platforms. Construction work began on the Sullom Voe Oil Terminal.
- 1978** – The first oil was piped to Sullom Voe through the Brent pipeline from the Dunlin oilfield on 25 November. The first oil was shipped out from the terminal by the Shell tanker 'Donovania' five days later and on 3 December the first oil arrived through the Ninian pipeline from the Heather oilfield.
- 1980** – Construction workforce peaked at over 7000.
- 1982** – In April the first fractionation of gas took place at the terminal and a month later the first gas was shipped out. In December the final construction and commissioning work at the terminal was completed and Sullom Voe received its one billionth (1,000 million) barrel of oil.
- 1994** – In August the terminal recorded one million manhours without a lost time injury.
- 1997** – On 13 June the six billionth barrel of crude oil was produced at the terminal.
- 1998** – During April the terminal was awarded, for the fourth consecutive year, the Gold Award for Occupational Safety by the Royal Society for the Prevention of Accidents. On 24 April the 'Hellespont Grand' became the largest tanker to visit the terminal with a dead-weight of 421,680 tonnes, and took the largest cargo from the terminal, 376,000 tonnes. In May the LPG ship 'Havrim', 37,300 cu.m., was the 1,000th LPG vessel to visit the terminal since operations commenced. On 8 August the 'Nordic Savonita' offloaded the first cargo of oil, 38,000 tonnes/300,000 barrels, from the Schiehallion field, west of Shetland. The 'Windsor' was the first tanker to collect a cargo of 630,000 barrels of Schiehallion crude, bound for Rotterdam on 19 August. October saw the longest tanker 'Empress Des Mers' to berth at Sullom Voe. This Nassau registered tanker was 381.82 metres long.
- 1999** – On 6 January the 'Hellespont Grand' took the largest cargo of oil from the terminal: 395,567 tonnes.
- 2001** – On 15 December the seven billionth barrel of oil was produced at the terminal.
- 2005** – The Clair Field, 47 miles west of Shetland, produced its first oil on 24 February. In May the 'Shetland Spirit' became the first tanker to export oil from this field, with a cargo of 90,392 tonnes.

UK Port Traffic, Bulk Fuel and Crude Oil Handling Ports 2004

Port Traffic (foreign & domestic)	'000 Tonnes	% UK Traffic	Oil & Gas Traffic (foreign & domestic)	'000 Tonnes	% UK Traffic
Grimsby & Immingham	57,616	10.1	Milford Haven	37,498	14.7
Tees & Hartlepool	53,819	9.4	Tees & Hartlepool	31,906	12.5
London	53,289	9.3	Forth	30,609	12.0
Milford Haven	38,452	6.7	Southampton	27,017	10.6
Southampton	38,431	6.7	Sullom Voe	23,939	9.4
Forth	34,892	6.1	All above ports	150,969	59.2
Liverpool	32,233	5.6	All major UK ports	254,982	100.0
Sullom Voe	23,939	4.2			
Felixstowe	23,413	4.1			
Dover	20,753	3.6			
Orkney	17,934	3.1			
Medway	14,535	2.5			
Belfast	13,559	2.4			
Hull	12,443	2.2			
Clyde	11,507	2.0			
All UK ports	573,070	100.0			

Crude Oil	'000 Tonnes	% UK Traffic
Tees & Hartlepool	25,339	15.7
Sullom Voe	23,879	14.8
Forth	20,878	12.9
Orkney	17,723	11.0
Southampton	16,709	10.3
All above ports	104,528	64.7
All major UK ports	161,595	100.0

Source: Maritime Statistics Branch, Department of the Environment, Transport & the Regions

Sullom Voe Terminal: Oil Throughput (tonnes)

	1978	1981	1986	1991	1996	2001	2004	2005
Brent Pipeline System	856,991	23,116,490	38,692,099	20,263,701	23,332,990	13,368,931	8,176,574	7,014,704
Ninian Pipeline System	92,186	15,545,240	16,875,047	15,576,512	14,368,498	5,994,252	5,014,621	4,967,043
Schiehallion	-	-	-	-	-	5,441,468	5,374,253	3,826,711
Clair	-	-	-	-	-	-	-	680,522
Total	949,177	38,661,730	55,567,146	35,840,213	37,701,488	24,804,651	18,565,448	16,488,980

Sullom Voe Terminal: Oil Throughput (barrels per day)

	1978	1981	1986	1991	1996	2001	2004	2005
Brent Pipeline System	177,526	478,094	800,134	419,864	483,404	277,732	169,614	145,378
Ninian Pipeline System	23,439	317,083	346,513	322,592	297,684	124,520	104,025	102,928
Schiehallion	-	-	-	-	-	110,966	103,227	71,718
Clair	-	-	-	-	-	-	-	12,928
Total	200,965	795,177	1,146,647	742,456	781,088	513,218	376,866	332,952

Sullom Voe Terminal: Gas Throughput (tonnes)

	Brent Pipeline System Propane	Brent Pipeline System Butane	Ninian Pipeline System Propane	Ninian Pipeline System Butane	Total Propane	Total Butane
1986	476,742	375,641	346,478	254,621	823,220	630,262
1991	89,961	57,906	260,536	190,250	350,497	248,164
1996	73,381	18,284	214,052	174,388	287,433	192,672
2001	32,479	22,647	57,746	41,542	90,225	64,189
2003	30,691	19,545	58,051	42,079	88,742	61,624
2004	17,124	6,198	57,333	46,218	74,457	52,416
2005	17,057	7,482	51,276	42,134	68,333	49,616

Oilfields in Production

Name of Field		Field on stream	Operator	Production 2005 '000 barrels*
Brent	(B)	1976	Shell	3,555
Dunlin	(B)	1978	Shell	1,658
Heather	(N)	1978	Lundin Heather Ltd.	968
Ninian	(N)	1978	CNR International (UK) Ltd.	8,940
Thistle	(B)	1978	Lundin Thistle Ltd.	1,058
South Cormorant	(B)	1979	Shell	1,343
Murchison	(B)	1980	CNR International (UK) Ltd.	1,920
North Cormorant	(B)	1982	Shell	5,018
Magnus	(N)	1983	BP	11,888
Deveron	(B)	1984	Lundin Thistle Ltd.	188
Alwyn North	(B)	1987	Total E & P UK Plc.	3,248
Eider	(B)	1988	Shell	900
Tern	(B)	1989	Shell	4,500
Osprey	(B)	1991	Shell	1,283
Lyell	(N)	1993	CNR International (UK) Ltd.	833
Strathspey	(N)	1993	Chevron Texaco	1,823
Dunbar	(B)	1994	Total E & P UK Plc.	4,635
Ellon	(B)	1994	Total E & P UK Plc.	270
Hudson	(B)	1994	Dana Petroleum (E&P) Ltd.	3,555
South Magnus	(N)	1996	BP	1,155
Dunlin SW	(B)	1996	Shell	375
Pelican	(B)	1996	Shell	1,860
Merlin	(B)	1997	Shell	863
Columba E	(N)	1998	CNR International (UK) Ltd.	1,485
Schiehallion	(WoS)	1998	BP	25,643
Grant	(B)	1998	Total E & P UK Plc.	938
Columba B/D	(N)	2000	CNR International (UK) Ltd.	2,948
Loyal	(WoS)	2000	BP	3,683
Otter	(B)	2002	Fina Exploration Ltd.	6,660

(B) part of Brent pipeline to Sullom Voe

(N) part of Ninian pipeline to Sullom Voe

(WoS) West of Shetland – Schiehallion oil sent to terminal by shuttle tanker

* The current year total production in barrels has been achieved by converting the total mass for each field by an average conversion factor applicable to that field.

Source: BP Exploration Operating Co Ltd

Sullom Voe: Tankers Using Port

	1979	1981	1986	1991	1996	2001	2003	2004	2005
Oil	270	432	654	423	395	295	237	221	201
Gas	0	0	112	45	32	12	11	7	7

Permanent Terminal Workforce

	1978	% local	1981	% local	1986	% local	1991	% local
SIC Marine Operations	32	66	92	63	99	72	94	71
Shetland Towage	25	80	86	88	92	93	94	100
BP	113	31	407	48	583	59	516	58
Sub-Contractors	n/a	n/a	336	41	223	68	406	56
Total Employees	170	45	921	50	997	73	1,110	62

	1996	% local	2001	% local	2004	% local	2006	% local
Ports and Harbours SIC*	98	77	106	97	94	100	142	100
Shetland Towage	73	100	71	100	66	100	–	–
BP	333	70	315	100	259	100	220	100
Sub-Contractors	195	79	514	67	281	72	350	72
Total Employees	699	77	1,006	83	700	93	712	86

Sources: BP Exploration Operating Co Ltd; Shetland Towage; Ports and Harbours, SIC and Economic Development Unit, SIC

* In 2002, Marine Operations became known as Ports and Harbours

Marine Service Base

Base	Area (ha)	Berths Operational
Shetland Base Services Ltd (Green Head, Lerwick)	16.20	9

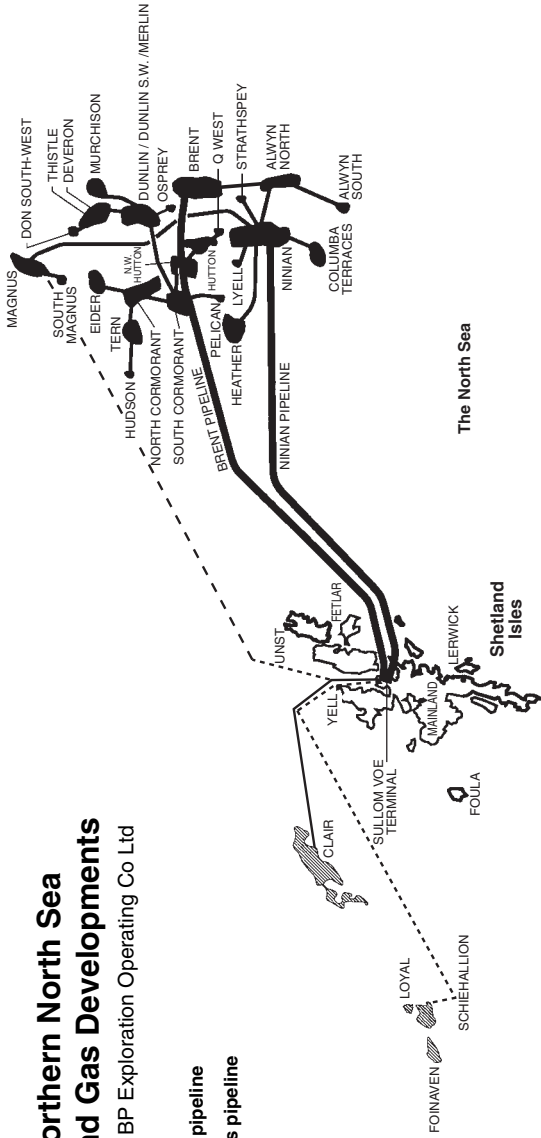
Berthage for supply vessels is also available at Scalloway and Baltasound Harbours.

Northern North Sea Oil and Gas Developments

Source: BP Exploration Operating Co Ltd

— Oil pipeline

- - - Gas pipeline



The North Sea

Shetland
Isles

FAIR ISLE



Internal Transport

Internal Air and Sea Transport Infrastructure

Location	Type of Transport	Type of Service*	Surface Type and Dimensions of Airstrip
Unst	Air/SIC Vehicle Ferry		Bituminous (640x28m)
Yell	SIC Vehicle Ferry		
Fetlar	Air/SIC Vehicle Ferry	Air = Charter only	Soft Gravel (457x18m)
Skerries	Air/SIC Vehicle Ferry		Rolled Gravel (Firm) (381x18m)
Whalsay	Air/SIC Vehicle Ferry	Air = Charter only	Rolled Gravel (Firm) (457x18m)
Scatsta	Air	Air = Charter only	Bituminous (960x28m)
Bressay	SIC Vehicle Ferry		
Tingwall	Air		Bituminous (740x18m)
Sumburgh	Air		Tarmac (1,084x46m) Tarmac (1,426x46m) Tarmac (550x45m)
Fair Isle	Air/SIC Ferry		Rolled Gravel (Firm) (457x18m)
Papa Stour	Air/SIC Ferry		Soft Gravel (457x18m)
Foula	Air/SIC Ferry		Soft Gravel (457x18m)

* All SIC vehicle ferries operate on both a charter and scheduled basis.

Air services operate similarly, except where stated. All internal air services are operated by Loganair Ltd.

Source: Department of Infrastructure Services, SIC

Inter Island Ferries

Shetland Islands Council Ferry Traffic

Passengers

Ferry Route	1976	1986	1991	1996*	2001	2004	2005
Yell	62,626	96,364	113,897	193,186	192,661	231,249	250,381
Unst/Fetlar	33,460	40,605	65,608	112,852	110,688	145,350	139,535
Bressay	71,615	96,849	135,447	219,619	180,675	212,957	210,600
Whalsay	23,110	45,888	67,385	144,606	138,327	154,350	166,016
Skerries	—	—	—	—	—	—	3,920
Other routes**	—	—	—	—	—	—	3,224
Total	190,811	279,706	382,337	670,263	622,351	743,906	773,676

Vehicles

Ferry Route	1976	1986	1991	1996*	2001	2004	2005
Yell	33,333	65,264	89,041	97,180	100,889	123,604	130,258
Unst/Fetlar	16,920	28,202	51,816	52,034	56,459	79,808	71,750
Bressay	14,817	31,958	50,272	66,612	58,829	71,230	73,193
Whalsay	10,117	31,660	48,911	64,212	62,748	72,885	77,623
Skerries	—	—	—	—	—	—	1,763
Other routes**	—	—	—	—	—	—	266
Total	75,187	157,084	240,040	280,038	278,925	347,527	354,853

* Prior to 1995 the fare gathering system did not record non-fare paying vehicles and passengers.

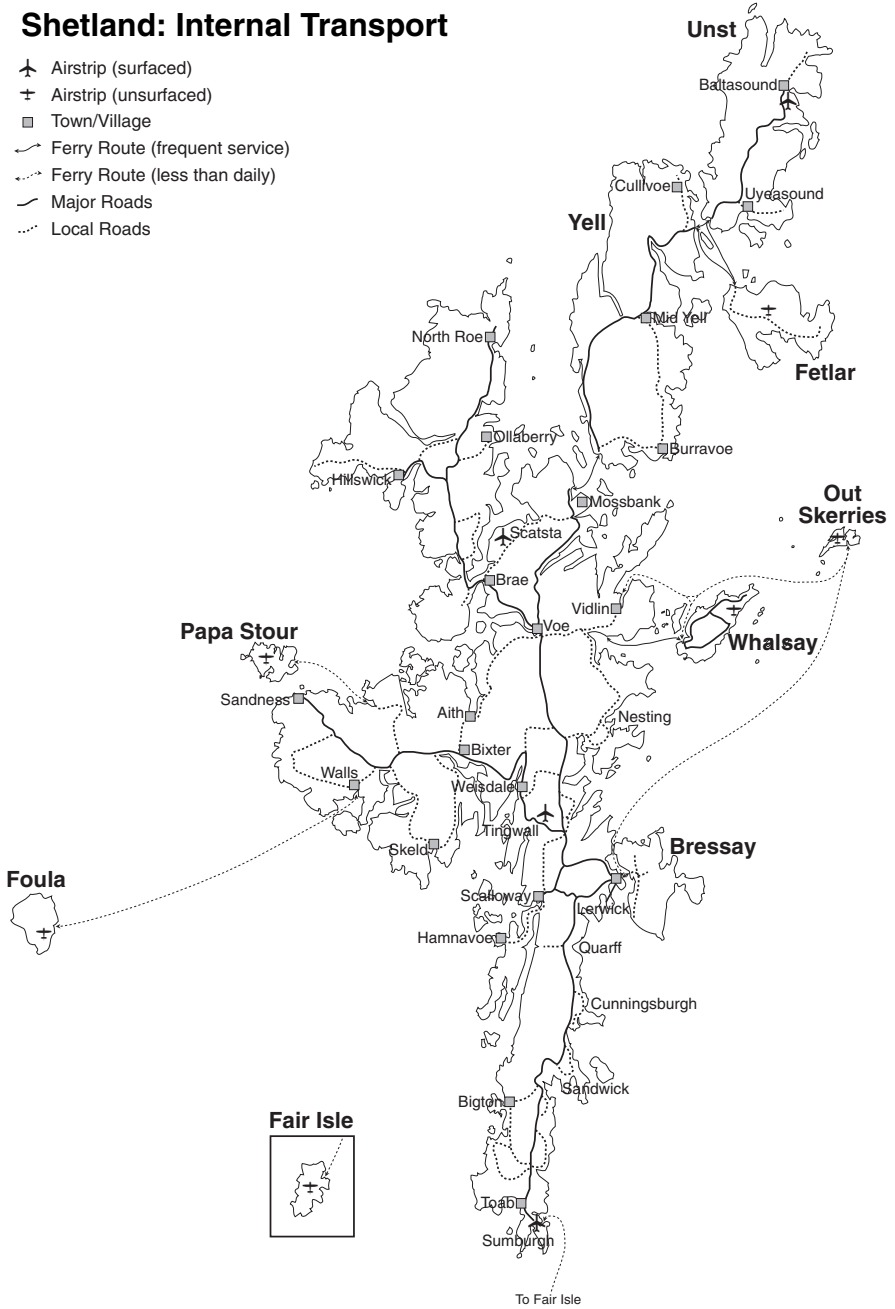
** Other routes = Fair Isle, Foula and Papa Stour.

Figures for Skerries and Other routes prior to 2005 were unavailable at time of going to print.

Source: Department of Infrastructure Services, SIC

Shetland: Internal Transport

- ✈ Airstrip (surfaced)
- ✚ Airstrip (unsurfaced)
- ▣ Town/Village
- ↔ Ferry Route (frequent service)
- ⋯ Ferry Route (less than daily)
- Major Roads
- ⋯ Local Roads



Overland Transport

Bus Services

Route	Operator	Passengers		
		2001	2003	2005
Lerwick to: South Mainland (Sandwick/Sumburgh/ Sumburgh Airport)	J Leask & Son	92,758	93,797	98,770
North Mainland (Hillswick/Mossbank/Toft)	J Leask & Son	73,240	71,116	70,997
	Johnson Transport			
Laxo/Vidlin (for Whalsay)	Andrew's	6,977	7,881	6,770
West Mainland (Walls/Skeld/ Reawick/Aith)	J Leask & Son	44,018	41,982	48,612
Scalloway/Burra	J Leask & Son	42,154	54,302	60,738
Lerwick Town Service	J Leask & Son	117,639	113,039	106,781
Yell Services	R G Jamieson	4,936	4,653	7,062
	H Sinclair & Co			
	R Robertson & Son			
Unst Services	P & T Coaches	1,638	1,950	2,159
Total		383,360	388,720	401,889

Schedule of County Roads

A Class Roads	224.6km (139.6 miles)
B Class Roads	161.7km (100.5 miles)
C Class Roads	198.5km (123.4 miles)
Unclassified Roads	460.5km (286.2 miles)
Total	1,045.3km (649.7 miles)

Sources: Department of Infrastructure Services, SIC

Vehicle Ownership

Vehicles licensed in Shetland on 31 December

Type	1976	1981	1986	1991	1996	2001	2003	2004	2005
Private Cars & Light Goods	5,076	7,048	7,808	8,933	10,031	10,806	11,430	11,697	12,114
Goods/Agricultural Vehicles	640	801	376	310	231	251	260	251	249
Public Transport Vehicles	171	164	187	121	88	81	73	75	83
Motor Cycles	397	545	379	287	251	271	345	375	368
Miscellaneous	826	831	966	967	889	992	1,083	1,128	1,136
Total	7,110	9,389	9,716	10,618	11,490	11,932	12,835	13,526	13,950

Sources: 1976: Local Taxation Office

1981 onwards: Department of the Environment, Transport and the Regions

External Ferries

Ferry Services: Passengers and Accompanied Cars Aberdeen – Lerwick

		Passenger Journeys	Accompanied Car Journeys
1971		22,693	n/a
1981		52,531	8,398
1986		63,323	9,788
1991		80,346	11,350
1995		60,669	11,073
1996		62,561	11,734
1998		60,938	11,254
1999		62,170	11,521
2003		81,185	14,918
2004		97,924	16,510
2005	January	5,129	814
	February	3,988	704
	March	6,329	1,114
	April	8,937	1,447
	May	8,390	1,327
	June	11,281	1,782
	July	15,180	2,494
	August	13,216	2,307
	September	8,710	1,603
	October	9,570	1,651
	November	5,264	997
	December	5,939	1,015
	Total	101,933	17,255

Note: Each passenger and car journey is counted one way

Source: P&O Scottish Ferries, NorthLink Orkney & Shetland Ferries

Freight Services 2005

	Aberdeen - Lerwick	Lerwick - Aberdeen
Drop Trailer Units	5,585	5,387
Self-Propelled Units	1,209	1,152
Unaccompanied Cars	1,100	294
Unaccompanied Motorcycles	26	23
Wide Loads	36	30

Source: NorthLink Orkney & Shetland Ferries

Lerwick Harbour

Shipping in Lerwick Harbour

	1971	1981	1986	1991	1996	2001	2004	2005
General	316	418	625	738	662	796	1,136	1,081
Oil Tankers	51	140	105	114	127	105	92	87
Oil Rig Tenders	79	1,556	1,033	888	737	319	251	366
Other Vessels	489	{ 430	486	522	611	2,936	1,103	1,052
Yachts		{ 112	203	366	317	415	412	464
British Fishing*	1,440	677	1,762	1,606	1,099	809	510	622
Foreign Fishing	1,580	246	509	216	127	103	157	141
Total	3,955	3,579	4,723	4,450	3,680	5,483	3,661	3,813

* Excludes local fishing fleet

Tonnage Handled in Lerwick Harbour

	1971	1981	1991	2001	2004	2005
General Cargo Imports	45,760	200,077	226,715	409,088	397,008	428,004
General Cargo Exports	48,849	57,471	98,335	325,055	401,777	370,904
Oil Related Imports	342	288,999	238,684	211,681	10,118	24,736
Oil Related Exports	0	421,807	315,996	203,685	20,868	41,090
Total	94,951	968,354	879,730	1,149,509	829,865	864,734

Weight of containers excluded

Foreign Fishing Vessels in Lerwick Harbour

	1971	1981	1986	1991	1996	2001	2004	2005
Angola	0	0	0	0	2	0	0	0
Belgium	0	0	0	0	1	0	0	0
Bulgaria	0	0	3	6	0	0	0	0
CIS (formerly USSR)	60	0	39	1	0	1	2	2
Cyprus	0	0	0	0	0	0	0	0
Denmark	374	117	82	66	46	23	35	51
Dominica	0	0	0	0	0	0	1	0
Faroe	242	14	3	19	6	6	10	20
Finland	6	0	0	0	0	0	0	0
France	16	13	13	18	4	8	3	1
Germany (formerly E and W)	3	1	14	22	10	8	10	8
Greenland	0	0	0	0	0	1	0	0
Iceland	215	2	9	0	0	0	1	1
Ireland	0	0	18	20	12	20	63	24
Netherlands	12	0	16	7	3	1	0	1
Norway	551	96	306	50	43	30	28	30
Poland	1	2	0	0	0	0	2	0
Portugal	0	0	1	0	0	0	0	1
Sweden	100	1	5	7	0	5	0	0
Togo	0	0	0	0	0	0	2	2
Total	1,560	246	509	216	127	103	157	141

Fish Factory Ships and Related Vessels in Lerwick Harbour

1983	1986	1991	1996	2001	2002	2003	2004	2005
41	219	230	249	5	4	2	1	18

Lerwick Harbour Trust Revenue (£)

1971	1981	1991	2001	2003	2004	2005
49,000	2,100,000	4,576,082	5,761,631	6,102,511	6,061,281	6,823,331

Source: Lerwick Port Authority

Scalloway Harbour

Shipping in Scalloway Harbour

	1986	1991	1996	2000	2001	2003	2004	2005
UK Commercial	11	0	29	47	61	37	91	68
Foreign Commercial	100	103	147	103	158	148	92	100
Oil-related	5	1	8	21	37	13	7	6
UK Fishing	163	207	127	74	68	42	36	44
Foreign Fishing	17	28	19	15	12	16	9	1
Yachts	9	33	9	5	1	6	4	2
Salmon Cages	0	0	0	21	87	19	33	29
SIC Vessels	0	0	9	9	15	29	8	5
Other	0	0	42	19	46	63	95	67
Total	305	372	381	314	485	373	375	322

Cargo Handling (tonnes)

	1986	1991	1996	2001	2003	2004	2005
Imports	5,037	6,351	11,533	20,405	21,652	18,195	17,512
Exports	16,120	893	14,087	25,616	48,244	29,594	31,296

Scalloway Harbour Revenue (£)

1986/87	1991/92	1996/97	2000/01	2003/04	2004/05	2005/06
160,838	202,598	359,773	218,086	193,308	234,911	266,051

Source: Ports and Harbours, SIC

Air Services

Total Aircraft Traffic at Sumburgh, Scatsta and Tingwall *

	1981	1986	1991	1996	2001	2003	2004	2005
Passengers	784,545	367,053	588,625	524,476	386,844	344,944	357,970	380,930
Aircraft Movements	52,863	29,457	39,863	34,122	24,896	18,350	22,014	24,225

* Figures for Unst are included up to 2001

Employment

	1981	1986	1991	1996	1998	1999	2003	2005
Sumburgh	650	206	296	235	199	191	163	176
Tingwall	12	10	8	6	3	3	3	2
Scatsta	42	10	11	58	60	60	90	100
Unst	68	66	42	10	6	5	0	0
Total	772	292	357	309	268	259	256	278

Source: Highlands & Islands Airports Ltd., Department of Infrastructure Services, SIC

Sumburgh Airport Traffic: Passengers

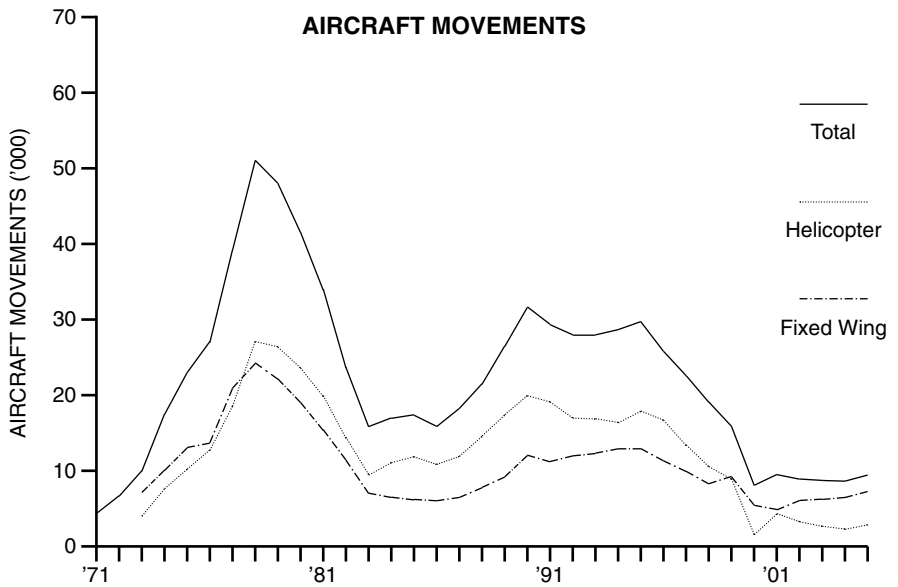
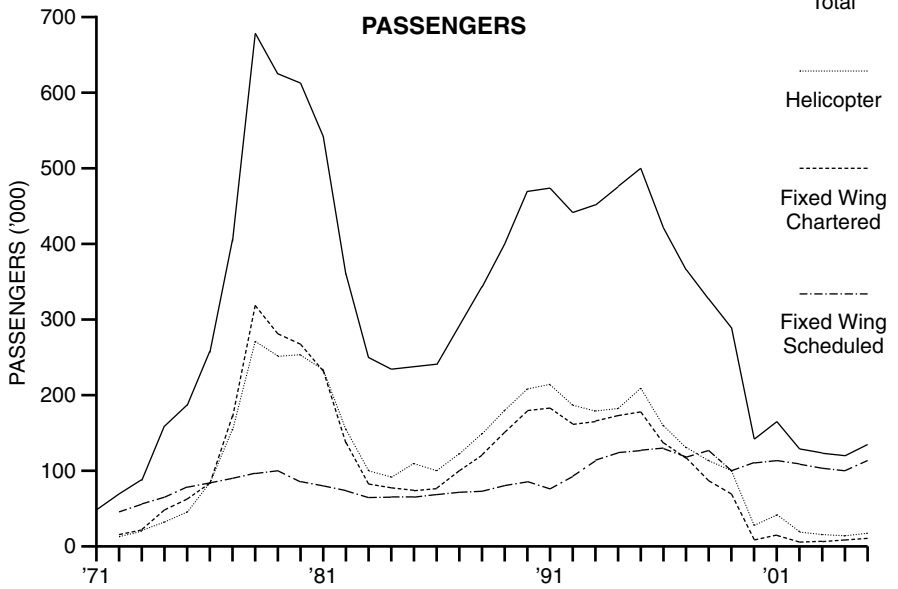
	Total Passengers	Fixed Wing Scheduled Passengers	Charter Passengers and Others	Helicopter Passengers
1971	46,994	n/a	n/a	n/a
1976	250,778	78,654	84,111	88,013
1978	685,492	90,601	323,151	271,740
1981	541,761	76,853	232,389	232,519
1986	239,744	63,200	77,805	98,739
1991	473,626	76,841	182,377	214,408
1996	423,476	125,744	137,384	160,348
2001	168,281	112,146	14,824	41,311
2003	127,865	105,530	4,413	17,922
2004	123,163	103,001	4,888	15,274
2005	137,255	113,889	7,522	15,844

Sumburgh Airport Traffic: Aircraft Movements and Freight

	Total	Fixed Wing	Helicopter	Freight (kgs)
1971	3,895	n/a	n/a	440,000
1976	25,694	13,030	12,664	1,574,338
1978	50,666	23,843	26,823	1,950,287
1981	34,188	14,361	19,827	3,487,834
1986	15,968	5,621	10,347	1,409,284
1991	29,168	10,321	18,847	1,448,769
1996	25,350	10,202	15,148	1,611,102
2001	11,165	5,635	5,530	981,475
2003	8,787	5,811	2,976	1,046,013
2004	8,753	6,016	2,737	1,073,614
2005	10,548	7,572	2,976	1,065,921

Source: Highlands & Islands Airports Ltd.

Sumburgh Airport



UK Airport Passengers ('000)

	1991	1996	2001	2004	2005
Heathrow	40,245	55,732	60,675	67,343	67,913
Gatwick	18,690	24,102	31,182	31,467	32,776
Manchester	10,102	14,485	19,307	21,250	22,403
Stansted	1,685	4,810	13,665	20,911	21,999
Birmingham	3,246	5,353	7,809	8,862	9,381
Luton	1,958	2,411	6,555	7,536	9,148
Glasgow	4,154	5,472	7,292	8,575	8,793
Edinburgh	2,340	3,810	6,067	8,018	8,457
Bristol	783	1,394	2,694	4,647	5,254
Newcastle	1,527	2,433	3,413	4,724	5,201
Belfast International	2,168	2,351	3,619	4,407	4,824
Liverpool	457	620	2,253	3,353	4,411
East Midlands	1,145	1,822	2,387	4,381	4,184
Aberdeen	2,020	2,377	2,529	2,636	2,854
Leeds Bradford	172	726	1,619	2,368	2,610
Prestwick	35	522	1,240	2,163	2,408
Belfast City	537	1,361	1,193	2,091	2,237
London City	638	1,053	1,530	1,675	1,996
Southampton	428	551	858	1,531	1,836
Cardiff	513	1,010	1,544	1,888	1,779
Jersey	1,666	1,691	1,560	1,527	1,500
Guernsey	784	891	911	945	908
Durham Tees Valley	300	444	734	788	900
Exeter	164	205	344	622	848
Bournemouth	125	162	266	499	837
Isle of Man	473	605	707	774	806
Coventry	6	3	1	462	719
Inverness	199	285	364	551	626
Norwich	175	258	390	448	546
Humberside	108	279	435	531	461
Blackpool	120	85	81	266	377
Newquay	–	–	–	278	359
Scatsta	15	79	247	229	239
Kent International	4	2	6	101	207
City of Derry	37	64	186	235	201
Isles of Scilly (St. Marys)	102	125	133	144	136
Plymouth	85	98	172	129	133
Sumburgh	433	401	137	110	124
Stornoway	80	94	88	112	116
Penzance Heliport	97	106	128	129	115
Kirkwall	102	92	94	111	114
Alderney	83	84	72	74	76
Dundee	9	13	49	51	49
Isles of Scilly (Tresco)	21	26	40	46	44
Benbecula	31	38	34	30	32
Hawarden	1	–	3	29	29
Wick	31	28	26	25	25
Lands End (St Just)	–	–	–	26	24
Islay	20	19	20	21	22
Campbeltown	–	7	8	9	9
Barra	–	8	9	9	9
Tiree	5	5	5	6	7
Shoreham	1	3	1	4	7
Southend	21	6	4	3	5
Lerwick (Tingwall)	11	4	2	2	4
Lydd	30	–	1	4	3
Cambridge	26	29	18	3	2
Biggin Hill	–	6	4	0.7	0.7
Swansea	–	–	–	19	–
Unst	85	18	0.25	–	–
Total: All UK airports	98,301	138,665	184,744	219,179	231,084

Source: Civil Aviation Authority

Scatsta Airport Traffic

	1981	1991	1996	2001	2003	2004	2005
Passengers	109,063	14,495	78,807	247,131	229,558	228,843	239,266
Aircraft Movements	5,758	630	4,461	11,223	9,888	10,958	11,257

Source: Civil Aviation Authority

Tingwall Airport Traffic

	1981	1991	1996	2001	2003	2004	2005
Passengers	12,180	15,453	4,382	4,747	6,317	5,964	4,409
Aircraft Movements	2,815	2,917	2,582	2,394	2,384	2,303	2,420

Source: Department of Infrastructure Services, SIC

Small Airfield Traffic

Passengers

Airfield	1981	1986	1991	1996	2001	2003	2004	2005
Fair Isle	841	1,822	2,048	1,910	2,030	2,248	2,419	2,578
Fetlar	57	60	n/a	n/a	n/a	n/a	n/a	n/a
Foula	1,175	1,100	n/a	1,344	1,296	1,720	1,402	1,525
Papa Stour	n/a	n/a	n/a	n/a	238	448	386	361
Skerries	271	624	900	545	840	1,024	837	1,886
Whalsay	80	100	360	n/a	n/a	n/a	n/a	n/a
TOTAL	2,424	3,706	3,308	3,799	4,404	5,440	5,044	6,350

Aircraft Movements

Airfield	1981	1986	1991	1996	2001	2003	2004	2005
Fair Isle	238	480	610	632	605	635	583	657
Fetlar	52	40	n/a	n/a	n/a	n/a	n/a	n/a
Foula	310	304	466	687	492	542	507	488
Papa Stour	n/a	n/a	n/a	n/a	155	219	181	176
Skerries	138	302	400	408	570	476	456	453
Whalsay	78	70	200	n/a	n/a	n/a	n/a	n/a
TOTAL	816	1,196	1,676	1,727	1,822	1,872	1,727	1,774

Sources: Loganair

Education and Training

Staffing

	1971	1976	1981	1986	1991	1996	2001	2004	2005
Nursery Teachers	—	—	—	—	—	11	16	19	17
Primary Teachers	91	117	164	150	140	177	176	189	187
Secondary Teachers	88	124	142	162	189	198	206	193	198
Further Education Lecturers	2	4	9	13	18	47	61	72	68
Total	181	245	315	325	347	433	459	473	470

From 1996 FE lecturers include North Atlantic Fisheries College lecturers

Source: Community Services, SIC; Scottish Executive

Further Education

Students Enrolled on Shetland College Courses

	1971	81/82	86/87	91/92	96/97	01/02	03/04	04/05
Full Time	20	68	113	77	141	173	163	148
Part Time	20	54	62	36	1,627	1,810	2,649	4,800*
Evening Class	557	1,171	1,387	1,336	1,072	1,063	720	825
S.Seekers/M.Apprentices	—	—	43	101	42	7	177	185
Total	597	1,293	1,605	1,550	2,882	3,053	3,709	5,958

Source: Shetland College; Community Services, SIC; Train Shetland

*Includes Train Shetland Short Courses

Students Enrolled on North Atlantic Fisheries College Courses

	1992	1993	1994	1996	2001	2003	2004	2005
Business Courses	0	19	19	21	10	14	7	0
Aquaculture Courses	9	24	13	25	30	16	24	19
Fisheries Science	0	0	0	10	0	45	11	8
Marine Engineering	25	24	50	68	80	69	96	81
Maritime Studies	79	180	264	381	333	526	589	389
Processing Courses	0	0	46	24	143	51	36	2
Courses run by Third Parties	131	321	267	243	321	148	218	176
Total	244	568	659	772	917	869	981	675

Source: North Atlantic Fisheries College

Secondary Education

School Roll	1971	1976	1981	1986	1991	1996	2001	2004	2005
Aith Junior High	35	65	61	61	61	70	83	94	100
Anderson High	571	770	915	933	878	855	820	861	870
Baltasound Junior High	36	58	75	47	33	55	37	37	44
Brae High	47	68	164	263	211	242	265	253	234
Mid Yell Junior High	43	58	48	56	44	55	47	42	52
Sandwick Junior High	55	87	121	130	144	166	173	171	185
Scalloway Junior High	72	129	132	144	179	153	129	109	119
Skerries School	2	6	5	7	2	2	7	3	2
Whalsay School	36	54	62	49	45	50	70	64	65
Total	897	1,295	1,583	1,690	1,597	1,648	1,631	1,634	1,671

From 2004 figures are taken from the September school roll. Prior to that figures were taken from the January school roll.

Primary Education

School Roll	1971	1976	1981	1986	1991	1996	2001	2004	2005
Aith Junior High	67	63	52	77	61	58	90	94	94
Baltasound Junior High	103	100	106	71	85	72	54	60	44
Bell's Brae Primary	722	790	501	416	357	383	349	354	304
Bell's Brae Special	–	–	–	–	–	–	27	26	25
Brae High	44	68	171	170	139	152	105	102	120
Bressay Primary	24	38	20	21	28	40	42	39	31
Burra Primary	16	–	–	–	–	–	–	–	–
Burravoe Primary	38	31	36	29	32	26	19	14	7
Cullivoe Primary	21	23	24	24	18	15	12	12	15
Cunningsburgh Primary	56	74	77	59	50	60	59	69	68
Dunrossness Primary	123	152	209	149	146	155	138	127	119
Fair Isle Primary	3	9	11	8	8	5	17	11	8
Fetlar Primary	14	6	15	9	7	13	4	5	5
Firth Primary	16	–	–	–	–	–	–	–	–
Foula Primary	4	4	7	7	4	5	2	5	3
Gruting Primary	12	11	9	–	–	–	–	–	–
Hamnavoe Primary	64	65	107	110	96	78	63	59	57
Happyhansel Primary	43	40	48	55	57	58	48	50	43
Haroldswick Primary	38	33	21	30	25	14	–	–	–
Lunnasting Primary	20	22	38	26	21	26	31	28	26
Mid Yell Junior High	56	76	65	53	48	47	49	48	50
Mossbank Primary	–	–	136	117	70	85	73	66	62
Nesting Primary	16	14	26	21	11	14	29	26	27
North Roe Primary	17	16	23	17	20	22	12	11	13
Ollaberry Primary	18	12	16	29	36	27	22	23	20
Olnafirth Primary	19	30	46	44	31	29	28	27	22
Papa Stour Primary	–	–	5	3	4	0	2	1	2
Quarff Primary	17	19	23	21	15	10	12	n/a	–
Sandness Primary	6	7	15	21	13	17	12	10	9
Sandwick Junior High	44	81	96	65	69	86	86	94	104
Scalloway Junior High	120	136	150	138	117	96	83	89	91
Skeld Primary	13	26	36	19	14	24	18	21	30
Skerries Primary	16	12	11	8	9	8	4	4	4
Sound Primary	–	–	292	400	354	338	339	283	276
Tingwall Primary	41	43	52	50	50	39	62	62	50
Urafirth Primary	26	29	37	33	29	28	29	24	23
Uyeasound Primary	21	27	16	8	9	21	17	10	7
Whalsay School	125	149	146	121	125	110	98	105	98
Whiteness Primary	31	56	87	68	85	100	89	91	84
Total	2,014	2,262	2,730	2,505	2,243	2,261	2,124	2,050	1,941

Nursery Education

School Roll (January)	1981	1991	1996	2001	2004	2005
Aith Junior High	0	0	14	22	18	13
Baltasound Junior High	0	0	0	15	6	6
Bell's Brae	0	64	75	44	36	60
Brae High	51	60	40	27	23	30
Bressay	0	0	0	8	6	5
Cunningsburgh	n/a	n/a	n/a	n/a	n/a	11
Dunrossness	0	33	31	25	23	23
Fair Isle	0	0	0	0	1	1
Fetlar	0	0	0	1	0	0
Foula	0	0	0	1	0	0
Happyhansel	0	0	17	13	19	11
Mid Yell	0	0	0	16	25	13
Mossbank	0	23	29	17	20	16
Papa Stour	n/a	n/a	n/a	n/a	1	2
Sandwick Junior High	0	38	30	26	35	22
Scalloway Junior High	0	0	0	18	19	18
Skeld	0	0	0	7	7	4
Skerries	0	0	0	1	0	0
Sound	60	60	58	40	58	58
Urafirth	0	0	10	8	11	13
Whalsay Junior High	0	0	19	19	24	24
Whiteness	0	0	0	17	11	14
Total	111	278	323	325	343	344

Source: Department of Education & Community Services, SIC

Social Work Provision

The following services are provided by Shetland Islands Council Social Work Services except where stated otherwise:

	1996/97	2001/02	2004/05
Local Authority Beds for Older People	53	56	56
Voluntary Sector Beds for Older People*	66	86	87
Day Care Places for Older People**	58	86	96
Places in Hostel for Adults with Learning Disabilities	16	5	6
Independent Living for Adults with Learning Disabilities	–	20	20
Places in Children's Homes	5	5	5
Places for Mentally/Physically Disabled Children – Respite Care	6	6	6
Laundries	4	4	2
Meals on Wheels Schemes	27	24	24
Luncheon Clubs	3	2	3 ⁺
Meals Delivered	41,292	40,585	44,301
Home Helps	246	287	251
Home Help Clients	538	518	503
Community Care Support Clients***	52	55	57
Homes Connected to Community Alarm System	614	731	748

* Voluntary sector beds for older people are provided by the Shetland Welfare Trust and the Church of Scotland.

** Shetland Welfare Trust care centres provide up to 66 of the day care places for older people and the Church of Scotland provide up to 10.

*** Community Care Support Services are provided by the Shetland Welfare Trust. This service provides support to clients in order to allow them to remain living in their own home.

⁺ One provided by SIC, one provided by WRVS, and one by Dunrossness Church Fellowship.

Social Work, Housing and NHS Shetland jointly manage one scheme of sheltered housing providing 10 places for people who have mental health needs. Social Work and Housing jointly manage one scheme of very sheltered housing (16 units) mainly for older people.

Source: Department of Social Work, SIC

Health

Health services in Shetland are provided by Shetland Health Board, which in 2004/05 received a grant of £35,000,000 from the Scottish Executive. 2005/06's allocation is £37,856,000. The Board maintains close links with Grampian Health Board for the provision of specialist services not available in Shetland.

Health Board Expenditure * (£ per head of population)

	1986/87	1991/92	1996/97	2001/02	2003/04	2004/05
Shetland	312	675	862	1,356	1,520	1,718
Scottish average	392	695	813	1,087	1,268	1,374

* Net Operating Expenditure

Staffing

	1986	1991	1996	2001	2004	2005
Hospital – medical and dental	12	15	14	19	25	28
Hospital nursing staff	152	206	193	165	168	166
Scientific and professional, PAMS and technical	37	37	52	77	104	104
Administration and clerical	43	59	72	73	114	120
Works, trades and ancillary	102	110	10	9	11	11
General medical practitioners	20	20	24	22	25	27
Other nursing staff	42	45	47	47	62	54
Dental practitioners	4	7	8	8	12	11

Hospital Activity

Discharges/Attendances	1991/92	1996/97	2001/02	2003/04	2004/05
In Patients (all specialities)	2,105	2,411	2,898	2,536	2,608
Day cases	974	1,119	1,332	1,243	1,692
Accident and Emergency out patients	7,212	7,608	8,972	8,036	9,739
Total out patients (incl A and E)	18,459	19,768	23,965	24,420	23,876

Source: Information & Statistics Division, National Health Service in Scotland

Housing

Ownership of dwellinghouses in Shetland

Type of Dwelling	1976	1981	1991	1996	2001	2003	2004	2005
Local Authority & Housing Association	2,082	2,713	2,566	2,455	2,543	2,324	2,362	2,255
Private and others	5,205	5,899	6,590	7,110	7,334	7,758	7,733	7,910
Total	7,287	8,612	9,156	9,565	9,877	10,082	10,095	10,165

Source: Assessor & Electoral Registration Office, Lerwick

Leisure Facilities

Leisure Centres

	1991/92	1996/97	2001/02	2003/04	2004/05	2005/06
Clickimin	160,411	191,054	217,308	215,555	224,217	267,472
North Mainland	–	–	20,948	32,261	37,145	40,470
Scalloway	–	–	18,796	22,141	20,822	24,323
South Mainland	–	–	15,406	17,721	19,533	24,111
Unst	52,541	49,127	32,972	23,511	24,412	21,780
West Mainland	–	–	–	37,044	39,721	42,004
Whalsay	58,820	49,679	43,961	39,331	38,014	31,766
Yell	38,649	37,356	34,289	32,593	38,458	36,742

Swimming Pools

	1991/92	1996/97	2001/02	2003/04	2004/05	2005/06
Clickimin	133,249	177,129	186,637	207,551	201,883	196,909
North Mainland	43,551	28,369	19,728	9,909	11,017	10,102
Scalloway	–	33,850	26,944	18,677	20,426	20,409
South Mainland	–	32,925	17,074	10,121	13,592	14,134
Unst	11,789	9,438	10,599	5,857	6,652	5,994
West Mainland	–	–	–	10,113	8,951	12,745
Whalsay	20,928	14,842	14,337	11,773	11,532	9,692
Yell	8,393	6,875	7,798	5,495	5,915	4,785

Source: Shetland Recreational Trust

Community Halls and Community Centres (by community work area)

Lerwick, Bressay & Gulberwick	Hillswick Hall Lunnasting Hall Mossbank Hall Muckle Roe Hall North Nesting Hall North Roe and Lochend Hall Ollaberry Hall Olnafirth Hall South Nesting Hall Sullom and Gunnister Hall Isbister Hall – Whalsay Symbister Hall – Whalsay	West Mainland & Skerries Aith Hall Bixter Hall Gruting Community Centre Sandness Hall Skerries Hall Skeld Hall Walls Hall Whiteness and Weisdale Hall
North Isles Fetlar Hall Baltasound Hall – Unst Haroldswick Hall – Unst Uyeasound Hall – Unst Burravoe Hall – Yell Cullivoe Hall – Yell East Yell Hall Herra Hall – Yell Mid Yell Hall North-a-Voe Hall – Yell Sellafirth Hall – Yell Ulsta Hall – Yell West Sandwick Hall – Yell	South & Central Mainland Bigton Hall Boddam Hall Bridge End Hall Bruce Memorial Hall – Virkie Cunningsburgh Hall Fair Isle Hall Hamnavoe Hall – Burra Levenwick Hall Quarff Hall Scalloway Hall Sandwick (Carnegie) Hall Tingwall Hall Trondra Hall	Youth Centres Brae Youth Centre Germatwatt Youth Centre – Walls Livister Youth Centre – Whalsay Old School Youth Centre – Mossbank Sandveien Neighbourhood Centre Sandwick Youth & Community Centre Scalloway Youth Centre Unst Youth Centre
North Mainland & Whalsay Brae Hall Eshanness Community Centre		Outdoor Education Centres Bridge End Outdoor Centre – Burra Voxter Outdoor Centre – Brae

Shetland Community Directory

The Shetland Community Directory is an online database which aims to provide a single source of information for a wide and diverse range of community groups, voluntary organisations and public services throughout Shetland. To date, contact details for over 1100 organisations in Shetland are listed, including sport clubs and associations, hall committees, youth clubs, heritage groups, leisure centres and more.

If you are involved with any community groups or voluntary organisations, please check to see if your group's details are listed. If not, and you would like to see them included, you will find further instructions on how to 'join' on the website: www.shetland.gov.uk/communitydirectory. For more information, please contact Michael Duncan – Grants Co-ordinator – (01595) 744981.

Golf Facilities in Shetland

Dale Golf Course (18 holes)
 Whalsay Golf Course (18 holes)
 Asta Golf Course (9 holes)
 Knab Golf Course (9 holes)
 Moorpark (driving range)

Source: Community Development, SIC

Postal Services

Post Office Employees

	1991		1996		2001		2005	
	Royal Mail Delivery	PO Counters Ltd	Royal Mail Delivery	PO Counters Ltd	Royal Mail Delivery	PO Counters Ltd	Royal Mail Delivery	PO Counters Ltd
Full Time Staff	41	7	41	6	54	6	57	4
Part Time Staff	26	1	26	3	24	3	29	3
Sub Postmasters	{ -	29 (FT)	-	20 (FT)	-	15 (FT)	-	15 (FT)
	{ -	23 (PT)	-	27 (PT)	-	23 (PT)	-	23 (PT)
Ancillary Staff	8	0	5	0	1	0	2	0
Total	75	60	72	56	79	47	88	45

Sources: Royal Mail and PO Counters Ltd, Lerwick

Letters Posted Weekly

1977	1981	1991	1996	2001	2003	2004	2005
52,602	69,400	67,317	60,660	62,889	60,408	62,913	57,625

Source: Royal Mail, Lerwick

Crime

The Shetland Area Command of the Northern Constabulary is run by the Northern Joint Police Board, administered by Highland Council. In 2005/06, the requisition from Shetland Islands Council was £1,810,501, and in 2006/07 will be £1,846,790.

Police Stations 2004

Single Officer Police Stations: 5 (Scalloway, Dunrossness, Baltasound, Mid Yell and Whalsay)
 Section Stations under Sergeant-in-Charge: 1 (Brae)
 Shetland Command Area Headquarters: 1 (Lerwick)

Police Establishment

1971	1981	1986	1991	1996	2001	2003	2004	2005
21	45	36	36	37	38	38	38	37

Crimes and Offences reported to the Police

	1981	1986	1991	1996	2001	2003	2004	2005
Group 1	24	24	21	14	32	22	28	14
Group 2	12	2	3	8	7	10	24	41
Group 3	352	345	279	347	264	271	232	297
Group 4	126	133	199	235	188	228	243	326
Group 5	83	71	53	151	106	138	173	173
Group 6	422	286	322	471	292	393	498	509
Group 7	874	926	1,278	524	697	544	711	850
Total	1,893	1,787	2,155	1,750	1,586	1,606	1,909	2,210

Group 1: Non-sexual crimes against the person
 Group 2: Crimes involving indecency
 Group 3: Crimes involving dishonesty
 Group 4: Fire-raising, malicious and reckless conduct
 Group 5: Other crimes
 Group 6: Miscellaneous
 Group 7: Offences relating to motor vehicles

The detection rate in respect of crimes as detailed in groups 1-5 above was 69% in 2005/06.

Source: Northern Constabulary, Inverness

Fire Service

The Fire Service in Shetland is run by Highland and Islands Fire and Rescue Service, administered by Highland Council. In 2005/06, the requisition from Shetland Islands Council was £2,325,543 and in 2006/07 will be £2,261,467.

Fire Units in Shetland 2006

Location	Establishment	Appliances
Retained:		
Lerwick	20 + 3 full-time officers	2 water tender appliances 2 utility vans
Brae	20	2 water tender appliances
Sumburgh	12	1 water tender appliance
Fair Isle	12	1 Midi 4x4 fire appliance
Baltasound, Bixter, Bressay, Fetlar, Hillswick, Mid Yell, Sandwick, Scalloway, Walls, Whalsay	12 per unit	1 light fire appliance, fully equipped with breathing apparatus and cutting equipment per unit
Foula, Out Skerries	12 per unit	1 Midi fire appliance per unit
Auxiliary:		
Mossbank, Papa Stour, Hamnavoe	4 per unit	Non-operational, Community Fire Safety role
Total Retained and Volunteers	219	

Fires Attended

	1986	1991	1996	2001	2003	2004	2005
Chimney fire	64	66	50	27	25	12	15
Special services (pumping out boats, properties, road traffic accidents)	9	40	19	25	35	28	34
Property and small fires	42	54	45	62	33	42	41
False alarms, good intent	26	42	84	114	94	122	152
False alarms, malicious	4	3	22	7	2	3	7
Total	145	205	220	235	189	207	249

Source: Highland and Islands Fire Brigade, Inverness

Energy

Electricity Generation

	1971/72	1981/82	1991/92	2001/02	2003/04	2004/05
Units Generated (kilowatt hours)	32,319,000	143,539,222	170,023,850	230,600,000	226,604,000	231,277,000
Maximum demand (megawatts)	11.69	36.0	41.2	45.2	48.8	48.6

Electricity Distribution (km)

	1971	1981	1991	2001	2004	2005
33,000 Volt overhead lines	24.7	98.0	128.3	167.3	167.3	173.7
33,000 Volt underground cables	0.0	3.7	11.6	10.7	10.7	11.4
11,000 Volt overhead lines	705.9	756.2	843.0	812.2	812.2	817.3
11,000 Volt underground cables	15.1	65.5	99.3	110.8	110.8	112.0
Low Voltage overhead lines	340.1	345.6	324.5	227.4	227.4	227.4
Low Voltage underground cables	18.9	65.6	122.7	219.0	219.0	224.0

Figures from 1991 onwards are approximations only

Source: Scottish Hydro-Electric, Lerwick

Renewable Energy

Renewable Energy Projects in Shetland by Type and Ownership

Total Installed Capacity in kW

	Commercial	Community	Household	Public	Total
Wind	3,680	205	37	33	3,955
Heat Pump	–	–	39.5	–	39.5
Solar	–	28	–	5.6	33.6
District Heating	–	7,000	–	–	7,000
Total	3,680	7,233	76.5	38.6	11,028.1

Source: Shetland Renewable Energy Forum

Water and Wastewater Services

Water and wastewater services in Shetland are provided by Scottish Water. Scottish Water is a public corporation created in April 2002 from the merger of the three predecessor water authorities: North of Scotland, West of Scotland and East of Scotland Water Authorities. Scottish Water is the fourth largest water operator in the UK with a turnover of almost £1 billion and five million customers. It operates within a regulatory framework set up by Ministers and involving independent regulators, the Drinking Water Quality Regulator (DWQR), the Water Industry Commission (WIC) and the Scottish Environment Protection Agency (SEPA). The Shetland Area office of Scottish Water (Duncan House) is located at Upper Sound, Lerwick.

Water Supplied (millions of litres)

1976	1981	1986	1991	1996	2001	2003	2004	2005
2,627	4,964	4,607	4,691	3,990	4,104	3,893	3,974	4,100

Many thousands of water samples are taken throughout Shetland during each year. These are analysed and compared against a number of bacterial and chemical parameters as specified in the Water Supply (Water Quality) (Scotland) Regulations 1990.

Microbiological Quality (percentage compliance at W.T.W.S.)

1991	1996	1998	1999	2000	2001	2003	2004	2005
97.20	99.18	99.87	99.81	99.91	99.94	99.49	99.59	99.13

Networks

		1999	2002	2003	2005*
Water connections:	Domestic	9,502	9,655	9,655	9,695
	Non-domestic	1,119	1,133	1,133	1,148
Sewer connections:	Domestic	6,701	6,747	6,756	6,791
	Non-domestic	712	721	721	729
Length of water mains (km)		1,005	1,001	1,015	1,015
Length of sewers (km)		365	370	370	370

* Figures for 2004 were the same as those for 2005

Treatment

	1999	2002	2003	2004	2005
Wastewater treatment plants (including septic tanks)	60	64	64	64	79
Water treatment works (excluding re-chlorination stations)	18	18	18	14	14

Scottish Water maintains a programme for the decommissioning of small and inefficient rural waterworks and for the linking of these supply zones to larger works such as Lerwick (Sandy Loch) or Northmavine (Eela Water). This ensures better control of water quantity and quality.

During 2003, the Sandwick and Cunningsburgh zones were connected to Lerwick and the trunk main was extended to Sumburgh.

Improvement schemes in 2003/04 included Out Skerries, West Burrarfirth, Unst, Fetlar, Mid Yell, Fair Isle and Papa Stour.

Source: Scottish Water, Lerwick

Built Heritage

Buildings of Special Architectural or Historic Interest

Scottish Ministers compile lists of Buildings of Special Architectural or Historic Interest in order that such buildings may be identified and appropriate measures for their conservation can be taken. The list for Shetland is sub-divided into categories. Category A buildings are of national and international importance whilst those in Category C(s) are of more local interest, of lesser importance or altered.

	Cat. A	Cat. B	Cat. C(s)	Total	List Published
Bressay	1	10	3	14	26/03/97
Delting	0	10	4	14	26/03/97
Dunrossness	4	19	8	31	26/03/97
Fetlar	0	3	3	6	30/03/98
Lerwick	3	57	47	107	12/08/96
Lerwick Landward	0	1	1	2	26/03/97
Nesting	0	14	8	22	30/03/98
Northmavine	0	10	8	18	26/03/97
Sandsting and Aithsting	2	7	6	15	26/03/97
Tingwall	2	10	29	41	28/07/00
Unst	3	10	12	25	30/03/98
Walls and Sandness	0	13	10	23	30/03/98
Yell	2	10	18	30	30/03/98
Total	17	174	157	348	

Conservation Areas

Conservation Areas are areas of architectural or historic interest, the character and appearance of which it is desirable to preserve or enhance. The designation recognises the value of groups of buildings and their settings and allows them to be treated as a whole. Within Conservation Areas planning authorities must ensure that strict and appropriate standards of development control are maintained and that positive plans are prepared for the preservation and enhancement of the area. The Council, as Planning Authority, has designated three Conservation Areas in Shetland: Lerwick Lanes Outstanding Conservation Area (designated in 1975); Lerwick New Town Conservation Area (1986); and Scalloway Conservation Area (1984).

Scheduled Ancient Monuments

A scheduled monument is an ancient monument that has been given legal protection under the Ancient Monuments and Archaeological Areas Act 1979. Ancient monuments must be considered to be of national importance before they can be scheduled. The Scottish Ministers are responsible for maintaining the schedule of ancient monuments.

Ancient Monuments

There were 365* scheduled ancient monuments as at 7 April 2006 in the following categories:

Prehistoric: ritual and funerary	96
Prehistoric: domestic and defensive	207
Crosses and carved stones	3
Ecclesiastical	22
Secular	45
Industrial	15

* Some monuments appear in more than one category. Eight monuments are in the care of the Scottish Ministers.

Source: Department of Infrastructure Services, SIC

Sites and Monuments Record

Shetland Amenity Trust maintains the Shetland Sites and Monuments Record, a record of all the known sites in Shetland. The record is constantly expanding, both as the result of survey work being carried out by the Trust's Archaeology team, visiting universities, and reports from the general public. The record incorporates sites of all periods, up to and including the crofting period, the Second World War and the Cold War.

The current number of recorded archaeological sites is 7229.

These include:

Broch/possible broch	141
Burnt mounds	340
Chambered cairns	118
Viking/Norse houses	52
Souterrains	26
Military remains	445
Fishing Stations	34
Wheelhouses	8

Excavation

Visitor numbers to old Scatness:	2001 – 4,600*
	2002 – 6,237
	2003 – 6,415
	2004 – 6,187
	2005 – 9,170

* Visitor numbers were affected by the foot and mouth crisis.

Source: Shetland Amenity Trust; Department of Infrastructure Services, SIC

Nature Conservation

Scottish Natural Heritage is the independent government agency responsible for safeguarding and enhancing Scotland's countryside and wildlife, and promoting the understanding and enjoyment of the natural heritage.

Statutory Conservation Sites in Shetland

3 National Nature Reserves (NNR):	Herma Ness (Seabird Colony)	980.3 ha
	Keen of Hamar (Serpentine Flora)	42.4 ha
	Noss (Seabird Colony)	313.0 ha

81 Sites of Special Scientific Interest (SSSI)

Geology – 31 sites	Marsh and Meadow – 4 sites	Rare Plants – 5 sites
Geomorphology – 7 sites	Limestone Grassland – 1 site	Seabirds – 9 sites
Montane Habitats – 1 site	Sand Dune Flora – 2 sites	Moorland Birds – 14 sites
Serpentine Vegetation – 4 sites	Trees and Woodland – 4 sites	Wildfowl – 3 sites
Other Heathland – 4 sites	Intertidal Habitats – 6 sites	Aquatic Fauna – 3 sites
Peatland – 4 sites	Aquatic Flora – 6 sites	Mammals – 3 sites

Note: Some sites are notified for more than one feature of interest.

12 Special Protection Areas, covering 17 of the ornithological SSSIs have been designated under the EC Birds Directive. A further 12 sites comprising 11 SSSIs and 1 non-SSSI area have been designated as Special Areas of Conservation under the EC Habitats Directive.

Total area covered by statutory conservation sites is 19,852 hectares which represents 13.5 per cent of the total area of Shetland.

Approximate area coverage:

Foula – 2 sites	100%	Noss – 1 site	100%
Fetlar – 6 sites	70%	Mainland & uninhabited islands	
Fair Isle – 1 site	66%	— 45 sites (1 shared with Yell)	9%
Papa Stour – 1 site	79%	Yell – 9 sites (1 shared with Mainland)	4%
Unst – 16 sites	21%	Muckle Roe – 1 site	0.1%





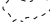

Wildlife

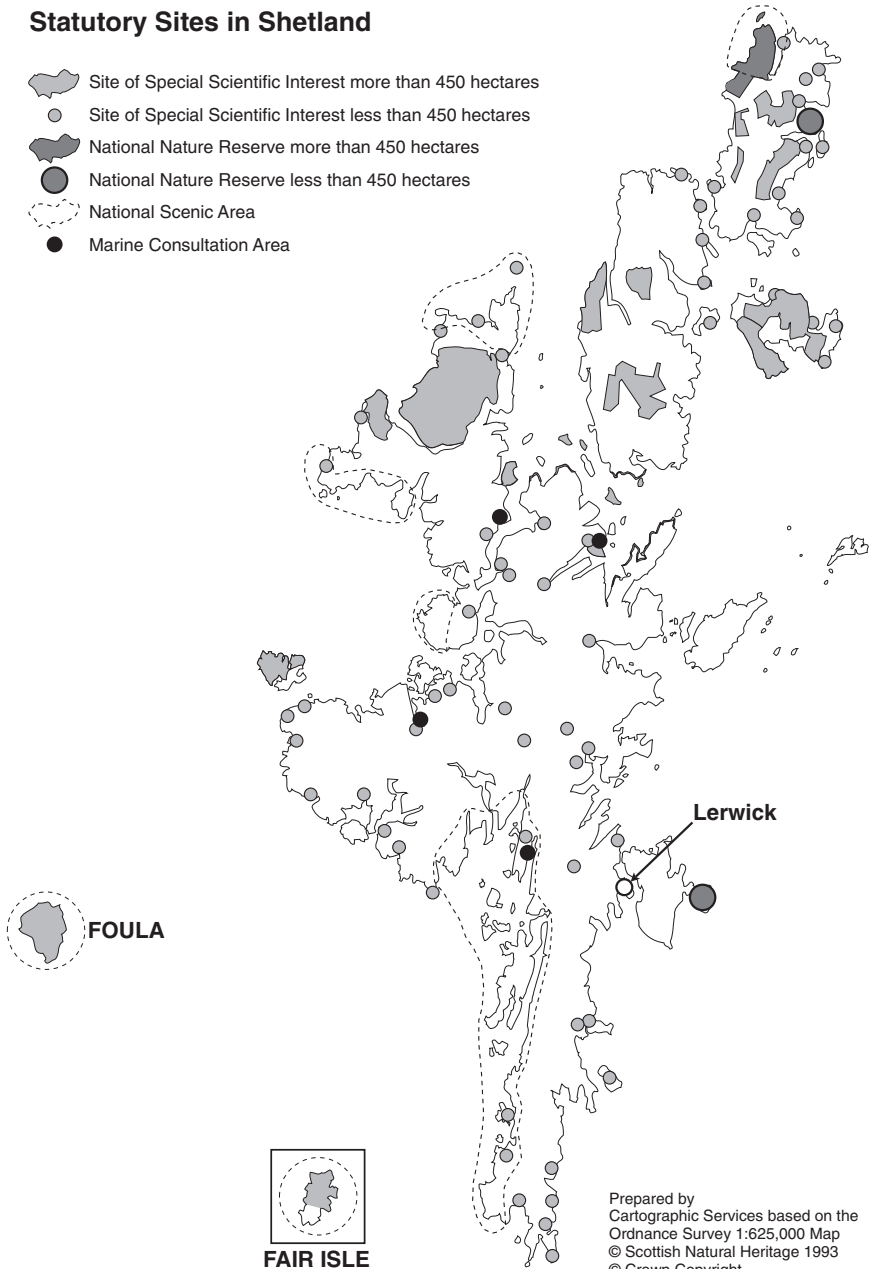
Latest population estimates for selected species are as follows:

Species	Population	Proportion of GB population
Red-necked Phalarope	25-30 pairs	90%
Whimbrel (tang-whaup)	4-500 pairs	95%
Great Skua (bonxie)	6,800 pairs	71%
Arctic Skua (skootie alan)	1,100 pairs	52%
Red-throated Diver (raingoose)	400 pairs	40%
Arctic Tern (tirrick)	25,000 pairs	44%
Fulmar (maalie)	190,000 pairs	38%
Black Guillemot (tystie)	16,000 adults	41%
Shag (skarf)	6,000 pairs	21%
Puffin (tammie norie)	100,000 pairs	18%
Gannet (solan)	26,000 pairs	12%
Grey Seal (selkie)	3,000 individuals (excluding pups)	2.5%
Otter (dratsie)	800 - 1,000 individuals	12%
Common Seal (selkie)	4,900 + individuals	15%

Source: Scottish Natural Heritage, Lerwick

Statutory Sites in Shetland

-  Site of Special Scientific Interest more than 450 hectares
-  Site of Special Scientific Interest less than 450 hectares
-  National Nature Reserve more than 450 hectares
-  National Nature Reserve less than 450 hectares
-  National Scenic Area
-  Marine Consultation Area



Prepared by
 Cartographic Services based on the
 Ordnance Survey 1:625,000 Map
 © Scottish Natural Heritage 1993
 © Crown Copyright

Electoral Statistics

General Election results in the Orkney and Shetland UK Parliamentary Constituency:

MAY 2001

Alastair Carmichael (Lib Dem)	6,919
Robert Mochrie (Lab)	3,444
John Firth (Con)	3,121
John Mowat (SNP)	2,473
Peter Andrew (SSP)	776

Electorate: 31,909
(Shetland: 16,899; Orkney: 14,931)

MAY 2005

Alistair Carmichael (Lib Dem)	9,138
Richard Meade (Lab)	2,511
Frank Nairn (Con)	2,357
John Mowat (SNP)	1,833
John Aberdein (SSP)	992
Scott Dyble (UKIP)	424
Paul Cruickshank	311
Brian Nugent (Free Scotland Party)	176

Electorate: 32,369
(Shetland: 16,855; Orkney: 15,784)

European Assembly Election results in the Scottish Region:

JUNE 2004

Scottish Labour Party	310,865
Scottish National Party (SNP)	231,505
Scottish Conservative and Unionist Party	209,028
Scottish Liberal Democrats	154,178
Scottish Green Party	79,695
UK Independence Party	78,828
Scottish Socialist Party	61,356
Operation Christian Vote	21,056
British National Party	19,427
Scottish Wind Watch	7,255
Fergus Alexander Tait	3,624

Total Electorate: 3,877,194

Scottish MEPs: David Martin (Labour Party), Ian Hughton (SNP), Struan Stevenson (Conservative & Unionist Party), John Purvis (Conservative & Unionist Party), Elspeth Attwooll (Scottish Liberal Democrats), Catherine Stihler (Labour Party), Alyn Smith (SNP)

(Voting in the UK Parliamentary Constituency of Orkney & Shetland)

Scottish Liberal Democrats	2,139
Scottish Conservative and Unionist Party	1,437
Scottish National Party (SNP)	1,306
Scottish Labour Party	889
UK Independence Party	846
Scottish Green Party	817
Scottish Socialist Party	648
Operation Christian Vote	204
British National Party	121
Scottish Wind Watch	70
Fergus Alexander Tait	38

Electorate: 32,329 (Shetland: 16,723; Orkney: 15,606)

Scottish Parliamentary Election results in the Shetland Constituency:

MAY 2003

Tavish Scott (Scottish Liberal Democrat)	3,989
Willie Ross (Scottish National Party)	1,729
John Firth (Scottish Conservative & Unionist Party)	1,281
Peter Hamilton (Scottish Labour Party)	880
Peter Andrews (Scottish Socialist Party)	766

Electorate: 16,677 – Turnout: 8,718

Source: Department of Legal and Administrative Services, SIC

Scottish Referendum:

SEPTEMBER 1997

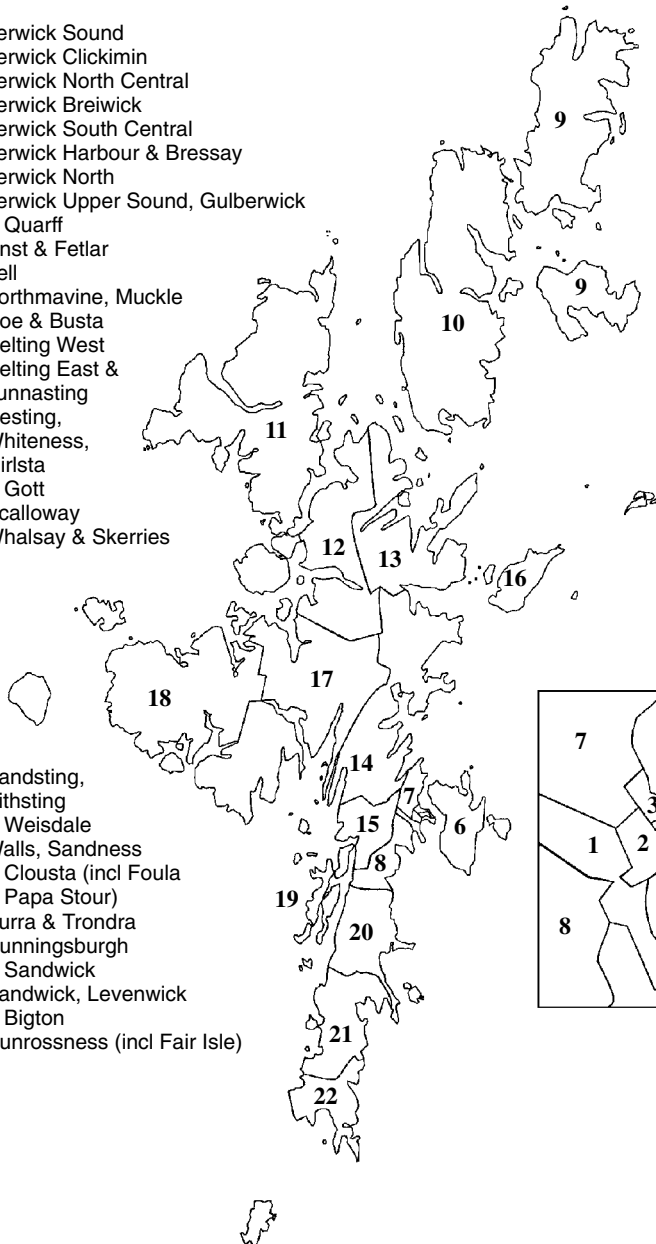
Votes cast in Shetland:

"I agree that there should be a Scottish Parliament"	5,430 (62.38% of votes cast)
"I do not agree that there should be a Scottish Parliament"	3,275 (37.62% of votes cast)
"I agree that a Scottish Parliament should have tax varying powers"	4,478 (51.61% of votes cast)
"I do not agree that a Scottish Parliament should have tax varying powers"	4,198 (48.39% of votes cast)

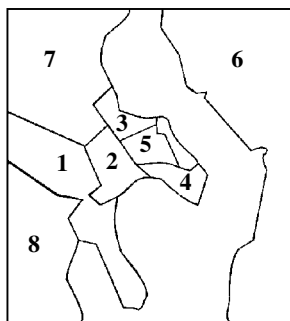
Electorate (Shetland): 16,954

Local Government Electoral Divisions

- 1 Lerwick Sound
- 2 Lerwick Clickimin
- 3 Lerwick North Central
- 4 Lerwick Breiwick
- 5 Lerwick South Central
- 6 Lerwick Harbour & Bressay
- 7 Lerwick North
- 8 Lerwick Upper Sound, Gulberwick & Quarff
- 9 Unst & Fetlar
- 10 Yell
- 11 Northmavine, Muckle Roe & Busta
- 12 Delting West
- 13 Delting East & Lunnasting
- 14 Nesting, Whiteness, Girsta & Gott
- 15 Scalloway
- 16 Whalsay & Skerries



- 17 Sandsting, Aithsting & Weisdale
- 18 Walls, Sandness & Clousta (incl Foula & Papa Stour)
- 19 Burra & Trondra
- 20 Cunningsburgh & Sandwick
- 21 Sandwick, Levenwick & Bigton
- 22 Dunrossness (incl Fair Isle)



Shetland Islands Council

Members (May 2003 – May 2007)

Ward	Councillor
1 Lerwick Sound	James Henry , 17 Murrayston, Lerwick (Independent) (Electorate 582. 49% poll – 52% of votes cast)
2 Lerwick Clickimin	William N Stove , 1 Lovers Loan, Lerwick (Independent) (Electorate 719. 40% poll – 61% of votes cast)
3 Lerwick North Central	Alexander J Cluness , 5 Twageos Road, Lerwick (Scottish Liberal Democrat) (Elected unopposed)
4 Lerwick Breiwick	Cecil B Eunson , Uradale, East Voe, Scalloway (Independent) (Electorate 814. 60% poll – 74% of votes cast)
5 Lerwick South Central	Leslie Angus , 12 Lovers Loan, Lerwick (Scottish Liberal Democrat) (Electorate 776. 55% poll – 56% of votes cast)
6 Lerwick Harbour & Bressay	Edward J Knight , 13 Gressy Loan, Lerwick (Independent) (Electorate 667. 65% poll – 65% of votes cast)
7 Lerwick North	Leonard G Groat , 10 Voderview, Lerwick (Independent) (Electorate 716. 40% poll – 59% of votes cast)
8 Lerwick Upper Sound, Gulberwick & Quarff	Robert G Feather , Klingrahoull, Gulberwick (Independent) (Electorate 751. 61% poll – 60% of votes cast)
9 Unst & Fetlar	Brian P Gregson , 5 Sunnyside, Mid Yell (Independent) (Electorate 618. 61% poll – 66% of votes cast)
10 Yell	John P Nicolson , Scarfataing, Trondra (Scottish Liberal Democrat) (Electorate 570. Elected unopposed)
11 Northmavine, Muckle Roe & Busta	William H Manson , Mangaster, Sullom (Independent) (Electorate 708. 66% poll – 58% of votes cast)
12. Delting West	William A Ratter , Gaets-A-Voe, Ollaberry (Independent) (Electorate 705. 56% poll – 66% of votes cast)
13 Delting East & Lunnasting	Barbara J Cheyne , Hillside, Voe (Independent) (Electorate 712. 59% poll – 58% of votes cast)
14 Nesting, Whiteness, Girlista & Gott	James C Irvine , 20 Twageos Road, Lerwick (Independent) (Electorate 849. Elected unopposed)
15 Scalloway	Iris J Hawkins , 48 Sycamore Avenue, Scalloway (Independent) (Electorate 904. 52% poll – 65% of votes cast)

Ward	Councillor
16 Whalsay & Skerries	Joseph G Simpson , Brucefield, Symbister (Independent) (Electorate 841. Elected unopposed)
17 Sandsting, Aithsting & Weisdale	Florence B Grains , Hoove, Whiteness (Independent) (Electorate 964. Elected unopposed)
18 Walls, Sandness & Clousta	Frank Robertson , Columbus, Selivoe, Bridge of Walls (Scottish Liberal Democrat) (Electorate 640. Elected unopposed)
19 Burra & Trondra	John A. Inkster , Hamnavoe, Burra (Independent) (Electorate 745. 71% poll – 51% of votes cast)
20 Cunningsburgh & Sandwick	Thomas W Stove , Nordaal, Setter, Sandwick (Independent) (Electorate 765. Elected unopposed)
21 Sandwick, Levenwick & Bigton	William Tait , Bonavista, East Ireland, Bigton (Independent) (Electorate 741. 62% poll – 61% of votes cast)
22 Dunrossness	Gordon G Mitchell , Thistles, Bigton (Scottish Liberal Democrat) (Electorate 709. Elected unopposed)

Shetland Islands Council Departments

Chief Executive: Morgan Goodlad, Town Hall, Lerwick

Department/Service	Executive Director/ Director	Head of Service	Address
Executive Services Dept. Finance Services Housing & Capital Projects Legal & Administration Organisational Development	Morgan Goodlad	Graham Johnston Chris Medley Jan-Robert Riise John R Smith	Town Hall, Hillhead, Lerwick Montfield, Burgh Road, Lerwick Fort Road, Lerwick 4 Market Street, Lerwick 13 Hill Lane, Hillhead, Lerwick
Education & Social Care Dept. Children's Services Community Care Community Services Schools	Brian Doughty (interim)	Stephen Morgan Christine Ferguson George Smith Helen Budge	Hayfield House, Hayfield Lane, Lerwick 92 St Olaf Street, Lerwick Quendale House, Lerwick Hayfield House, Hayfield Lane, Lerwick Hayfield House, Hayfield Lane, Lerwick
Infrastructure Services Dept. Environment & Building Serv. Planning Roads Transport	Graham Spall	Stephen Cooper Iain McDiarmid Ian Halcrow Michael Craigie	Grantfield, Lerwick Grantfield/Gremista, Lerwick Grantfield, Lerwick Toll Clock Centre, Lerwick 11 Hill Lane, Lerwick
Economic Development Unit Business Development Development Resources	Neil Grant (interim)	Douglas Irvine Alastair Cooper	6 North Ness Business Park, Lerwick
Ports & Harbours Operations	James Dickson		Port Administration Building, Sella Ness, Sullom Voe

Shetland Islands Council Finance

	2003/04	2004/05
Services Provided by Shetland Islands Council	Total Expend. £'000	Total Expend. £'000
GENERAL FUND EXPENDITURE		
Executive Services	7,597	5,986
Community Services	54,107	58,697
Economic Development Unit	2,875	2,746
Infrastructure Services	29,439	32,486
Committee Expenditure	94,018	99,915
Source of Finance:		
Revenue Support Grant	(61,067)	(64,165)
Non-Domestic Rates	(7,297)	(8,229)
Council Tax	(6,365)	(7,008)
Contributions and Balances	(15,984)	(16,379)
General Fund Balance	3,305	4,134
HARBOUR ACCOUNT EXPENDITURE		
Harbour Operations	16,533	16,275
Source of Finance:		
Tanker Traffic	(6,764)	(6,206)
Mooring Charges	(358)	(311)
Boarding and Landing	(372)	(323)
Pilotage	(895)	(760)
Other Income	(2,711)	(2,553)
Harbour Account Balance	5,433	6,122
HOUSING REVENUE ACCOUNT EXPENDITURE		
Housing Services	6,873	7,687
Source of Finance:		
Housing Support Grant	(2,548)	(2,656)
Rents and Other Client Income	(5,140)	(5,199)
Financing and Contributions	864	(410)
Housing Revenue Account Balance	49	(578)

Source: Department of Finance Services, SIC

Rating and Valuation

	1996/97*	2001/02	2003/04	2004/05
	Pence per £	Pence per £	Pence per £	Pence per £
Non-Domestic Rates				
General	44.90	47.00	47.80**	48.80
Water	9.75	9.76	2.50	2.55
Sewerage	8.06	9.61	4.00	4.08
Total	62.71	66.37	54.30	55.43

	1996/97*	2001/02	2003/04	2004/05
	Pence per £	Pence per £	Pence per £	Pence per £
Council Tax (Band D)				
General	443.21	747.00	873.00	936.00
Sewerage	65.50 gross	157.55	186.29	179.55
	4.50 net			
Water	116.00	192.63	163.89	158.76
Total	563.71	1,097.18	1,223.18	1,274.31

* Domestic sewerage charges were subject to transitional relief grants, hence the gross and net figures given above for 1996/97. Prior to 2003/04 water and sewerage rates were set by individual local authorities. From 1 April 2003 rates were set nationally for the whole of Scotland.

** Properties over 29,000 Rateable Value Rate Poundage = 49.1

Council Tax 2004/05

Band	Property Value	General Fund Council Tax (£)
A	Up to £27,000	624.00
B	£27,001 – £35,000	728.00
C	£35,001 – £45,000	832.00
D	£45,001 – £58,000	936.00
E	£58,001 – £80,000	1,144.00
F	£80,001 – £106,000	1,352.00
G	£106,001 – £212,000	1,560.00
H	Over £212,001	1,872.00

Source: Department of Finance Services, SIC

Community Councils

Community Council	Clerk	Tel.
Bressay	Mr James Shepherd, Calijor, 10 Fullaburn, Bressay	(01595) 820376 (Home)
Burra & Trondra	Mrs Joyce Adamson, 12 Atlaness, Hamnavoe, Burra	(01595) 859426 (Home)
Delting	Mrs Vera Clark, 42 Staneyhill, Lerwick	(01595) 697312 (Home)
Dunrossness	Mrs Shirley Leslie, Ringesta, Quendale	(01950) 460868 (Home)
Fetlar	Mrs Bridgette Thomason, 1 Stackafletts, Fetlar	(01957) 733203 (Home)
Gulberwick, Quarff & Cunningsburgh	Mr Robert Jarmson, Meal, Cunningsburgh	(01950) 477259 (Home)
Lerwick	Ms Carol Duncan, Community Council Office, Stouts Court, Lerwick	(01595) 692447 (Office)
Nesting & Lunnasting	Mrs E. Ganson, Lochend, Girlsta	(01950) 840460 (Home)
Northmavine	Mrs Frances Williamson, Kerika, Ollaberry	(01806) 544369 (Home)
Sandness & Walls	Mrs B. Henry, Pier House, Walls	(01595) 809274 (Home)
Sandsting & Aithsting	Ms Laurena Fraser, West Burrafirth, Bridge of Walls	(01595) 809203 (Home)
Sandwick	Mrs Rosemary Inkster, Wainui, Hoswick, Sandwick	(01950) 431284 (Home)
Scalloway	Mrs Sandra Reynolds 12 Berry Road, Scalloway	(01595) 880429 (Home)
Skerries	Mrs Marina Tait Emhoruo, East Isle, Skerries	(01806) 515245 (Home)
Tingwall, Whiteness & Weisdale	Mrs M. Smith, Stenaquoy, Wormadale	(01595) 840480 (Home)
Unst	Mrs Josie McMillan Rockfield, Haroldswick, Unst	(01957) 711554 (Home)
Whalsay	Mrs Frances Valente, Hillside, Brough, Whalsay	(01806) 566769 (Home)
Yell	Mrs J. Smiles, Brough House, Burravoe, Yell	(01957) 722289 (Home)
Association of Shetland Community Councils	Secretary & Treasurer: Mrs Wendy Fraser, 11 Mounthooly Street, Lerwick	(01595) 693816

Source: Department of Legal & Administrative Services, SIC

Culture and Media

Best Sellers 2005

Shetland Interest Books

- 1 John Walker's Shetland**
Wendy Gear
- 2 Memories are Made of This**
James W. Irvine
- 3 Around Shetland: A Picture Guide**
Various
- 4 Peesterleeties and da Curse o da Njuggle**
Valerie Watt
- 5 Raft in the Pool**
John Strachan
- 6 Fond Hopes Destroyed**
Mary Prior
- 7 Mackerel at Midnight**
Ethel Hoffman
- 8 Shetland Dictionary**
John J. Graham
- 9 Highway Code**
- 10 Shetland: Colin Baxter Island Guides**
Jill Slee Blackadder

Source: Shetland Times Bookshop

Shetland Music – Local Retail Sales

- 1 Tracks North**
Various
- 2 Naked & Bare**
Fiddlers' Bid
- 3 Da Farder Ben Da Welcomer**
Fiddlers' Bid
- 4 No Afore Time**
Hom Bru
- 5 Treasure Untold**
Thomas Fraser
- 6 Migrant**
Shoormal
- 7 Over the Waves**
Da Fustra
- 8 A Thousand Miles Away**
Filska
- 9 With Silver and All**
Jenna Reid
- 10 The Best of**
Aly Bain & Phil Cunningham

Source: Clive's Record Shop

Media

	Av. Sales per issue		
The Shetland Times	Weekly	11,273	(Jul – Dec '05)
Shetland Life	Monthly	2,400	(Nov '03 – Sep '04)
New Shetlander	Quarterly	1,425	(Jan – Dec '05)

Sources: The Shetland Times and Shetland Council of Social Service

Local Radio

BBC Radio Shetland	5 nights weekly
SIBC (Shetland Islands Broadcasting Company)	24 hr

Shetland Interest Publications

Literature about Shetland is varied and the following is representative of currently available material. It makes no claim to be an exhaustive list. Books, and further information on the latest publications, are available from: The Shetland Times Bookshop, 71/79 Commercial Street, Lerwick, Shetland, ZE1 0AJ. Tel: (01595) 695531. Fax: (01595) 692897. E-mail: bookshop@shetland-times.co.uk

General Interest

		£
Blackadder, Jill Slee	Colin Baxter Island Guides: Shetland	20.00
Holmes, Robin	The Holiday Planning Guide to Shetland	14.99
Hulme, Malcolm (Ed.)	Local News	9.99
Penrith, James & Deborah	Scottish Islands: Orkney and Shetland	11.95
Strachan, John	A Raft in the Pool	9.99
Tait, Charles	The Shetland Guide Book	11.95
(Various)	Around Shetland: A Picture Guide	5.99

Economy, Archaeology and History

		£
Armit, Ian	Towers in the North: The Brochs of Shetland	15.99
Ballantyne, John & Smith, Brian	Shetland Documents 1580-1611	7.50
Crawford, B E	Northern Isles Connections	14.99
Donaldson, G	Court Book of Shetland 1615-1629	8.50
Downes, Jane	Prehistoric Houses at Sumburgh in Shetland	20.00
Gear, Wendy	John Walker's Shetland	14.99
Graham, John	A Vehement Thirst After Knowledge: Four Centuries of Education in Shetland	20.00
Graham, L & Smith, B (Ed)	MacDairmid in Shetland	7.95
Hobbin, Agnes	A Peerie Peek at da Past	8.99
Hoffman, Ethel	Mackerel at Midnight	14.95
Howarth, David	The Shetland Bus	7.99
Iversen, Kaare	Shetland Bus Man	10.99
Irvine, James W	Good Old Days	7.50
Irvine, James W	The Dunrossness Story	13.50
Irvine, James W	The Final Curtain	9.00
Irvine, James W	To Be A Soldier	8.40
Knox, Susan A	The Making of the Shetland Landscape	20.00
Martin, Simon	The Other Titanic	17.99
Miller, James	The North Atlantic Front	9.99
Morris, Jeff	The History of the Lerwick Lifeboats	3.00
Nicolson, James R	The Swan – Shetland's Legacy of Sail	9.99
Prior, Mary	Fond Hopes Destroyed – Breach of Promise Cases in Shetland	9.99
Robarts, Fred	Ultima Thule – Recollections of Shetland Holidays in the 1930s – in Pictures	12.00
Robson, Adam	The Saga of the Earls	30.00
Sandison, Ronald	Christopher Sandison of Eshaness (1781-1870) – Diarist in an Age of Social Change	24.00
Smith, Brian	Toons & Tenants: Settlement & Society in Shetland 1299-1899	13.99
Smith, Willie	Willie's War and Other Stories	9.99
Sørvaag, Trygve	The Shetland Bus 1940-45 – Faces and Places 60 Years On	25.00
Simmons, David	Shetland Crofter Postie	8.99
Strachan, David	As Time Goes By	8.99
Telford, Susan	In a World a Wir Ane: A Shetland Herring Girl's Story	7.99
Thomason, Edward	Island Challenge	18.00
Turner, Val (Ed)	The Shaping of Shetland	12.00

Natural Environment and Wildlife £

Bowie, Dr. Stanley	Shetland's Native Domestic Animals	7.50
Copland, John	Hardy Plants in the North	5.99
Dalby, Kery; Dalby, Claire	Shetland Lichens	15.00
Dymond, J	The Birds of Fair Isle	5.95
Gammack, Joyce	A Shetland Nature Diary	9.95
Guy, Peter	Walking the Coastline of Shetland, The Island of Yell	6.95
Guy, Peter	Walking the Coastline of Shetland, No. 2 (Unst)	9.99
Guy, Peter	Walking the Coastline of Shetland, No. 5 (Westside)	9.99
Guy, Peter	Walking the Coastline of Shetland, No. 6 (South Mainland)	8.99
Guy, Peter	Walking the Coastline of Shetland, No. 7 (Eastside)	9.99
Hunter, Margaret	Shetland Ponies	17.99
Jamieson, Harry	Harry's Shetland Fishing Almanac 2006	4.00
Johnston, J Laughton	A Naturalist's Shetland	35.00
Okill, Dave etal	The Birds of Shetland	40.00
Russell, V	Shetland Ponies	15.99
Scott, Walter; Harvey, Paul;		
Riddington, Roger; & Fisher, Morag	Rare Plants of Shetland	21.75
Steppanova, Rosa	Impossible Garden	25.00
Shetland Anglers' Association	Trout Fishing in Shetland	9.95
Welsh, M	Walking Shetland	6.99

Language, Folklore, Fiction, Poetry, Food and Music £

Anderson, Tom	The Tom Anderson Collection, Volume One	9.95
Barnes, Michael P	The Norm Language of Orkney & Shetland	9.95
Christie-Johnston, Alistair	Nor Heard the Clock Strike	8.99
Cluness, A T	Told Round the Peat Fire	9.99
Cluness, Alex	Shetland and Other Poems	5.99
Cooper, Davy	Viking Stories	5.00
Cooper, Susan	Key Notes: The History of the Lerwick Orchestra	9.00
De Luca, Christine	Wast Wi' Da Valkyries	8.99
Graham, J J	Shadowed Valley	9.99
Greig, Charles	A Rich Heritage	6.99
Guy, Christine	Songs and Sights of Shetland	7.99
Hall, David Alan	Doon da Gait	9.50
Hallett, Nigel	Da Roup & Other Tunes	7.50
Jamieson, F & R	Leveneeep Head	9.00
Jamieson, F & R	Vidlin Voe	7.50
Johnson, Laureen	Shetland Black	8.99
Moncrieff, Mike	Jeemsie da Jarl – A Grand Old Viking Century	7.99
Morton, Tom	The Further North You Go	7.99
Polson, Sam	Unst Fiddle Tunes	6.50
Pugh, Sheenagh	Kirstie's Witnesses	8.95
Ritch, P J	Mother Wave – Collection of Verse	6.95
Robertson, T A & Graham, J	Grammar and Usage of the Shetland Dialect	6.95
Scott, Sir Walter	The Pirate	8.99
Simpson, Charlie	In Da Galley	12.99
Stove, Magnus J	The Shetland Violinist	6.50
Vigor, Millie	Kippers For Breakfast	8.99
Watt, Jessie	Holm Sweet Holm	12.00
Watt, Valerie	Da Peesterleeties an da Curse o da Njuggle	7.99

Knitting £

Miller, Sharon	Heirloom Knitting	30.00
Simmons, J	A Shetland Dye Book	4.50

Conversion Factors

To convert to metric, multiply by the factor shown. To convert from metric, divide by the factor.

Length

miles : kilometres	1.6093
yards : metres	0.9144
feet : metres	0.3048
inches : millimetres	25.4
inches : centimetres	2.54

Area

square miles : square kilometres	2.59
square miles : hectares	258.999
acres : square metres	4046.86
acres : hectares	0.4047
square yards : square metres	0.8361
square feet : square centimetres	929.03
square inches : square millimetres	645.16
square inches : centimetres	6.4516

Volume

cubic yards : cubic metres	0.7646
cubic feet : cubic metres	0.0283
cubic feet : cubic decimetres	28.3168
cubic inches : cubic centimetres	16.3871

Capacity

gallons : cubic decimetres	4.5461
gallons : litres	4.546
quarts : litres	1.137
pints : litres	0.568

Velocity

miles per hour : kilometres per hour	1.6093
feet per second : metres per second	0.3048
inches per second : millimetres per second	25.4

Mass

tons : kilograms	1016.05
tons : tonnes	1.016
hundredweights : kilograms	50.8023
stones : kilograms	6.3503
pounds : kilograms	0.4536
ounces : grams	28.3495

Temperature

F = Degrees Fahrenheit	C = Degrees Centigrade
Centigrade : Fahrenheit	$F = \frac{9C}{5} + 32$
Fahrenheit : Centigrade	$C = \frac{5(F-32)}{9}$

