

A night landscape of a beach with a vibrant green aurora borealis in the sky. The aurora is a bright, shimmering green light that fills the upper half of the frame, creating a dramatic and ethereal atmosphere. The sky is dark, with the aurora's light reflecting off the clouds. The foreground shows a dark, rocky beach with some small waves breaking on the shore. The overall scene is a beautiful and serene depiction of a natural phenomenon in a coastal setting.

Shetland in Statistics 2012

SHETLAND in STATISTICS



Published by
Shetland Islands Council,
Economic Development,
Development Services Department,
Solarhus, 3 North Ness Business Park,
Lerwick, Shetland, ZE1 0LZ

© 2012 Economic Development Unit, Shetland Islands Council
39th Edition

Printed by Shetland Litho, Gremista, Lerwick

ISBN 978 0 905924 71 7

Whilst every care is taken in the production of this publication, neither the publisher nor the printer can accept any responsibility for any errors or omissions therein.

Cover photograph: Mirrie Dancers, Spiggie.
Photo: Maurice Henderson

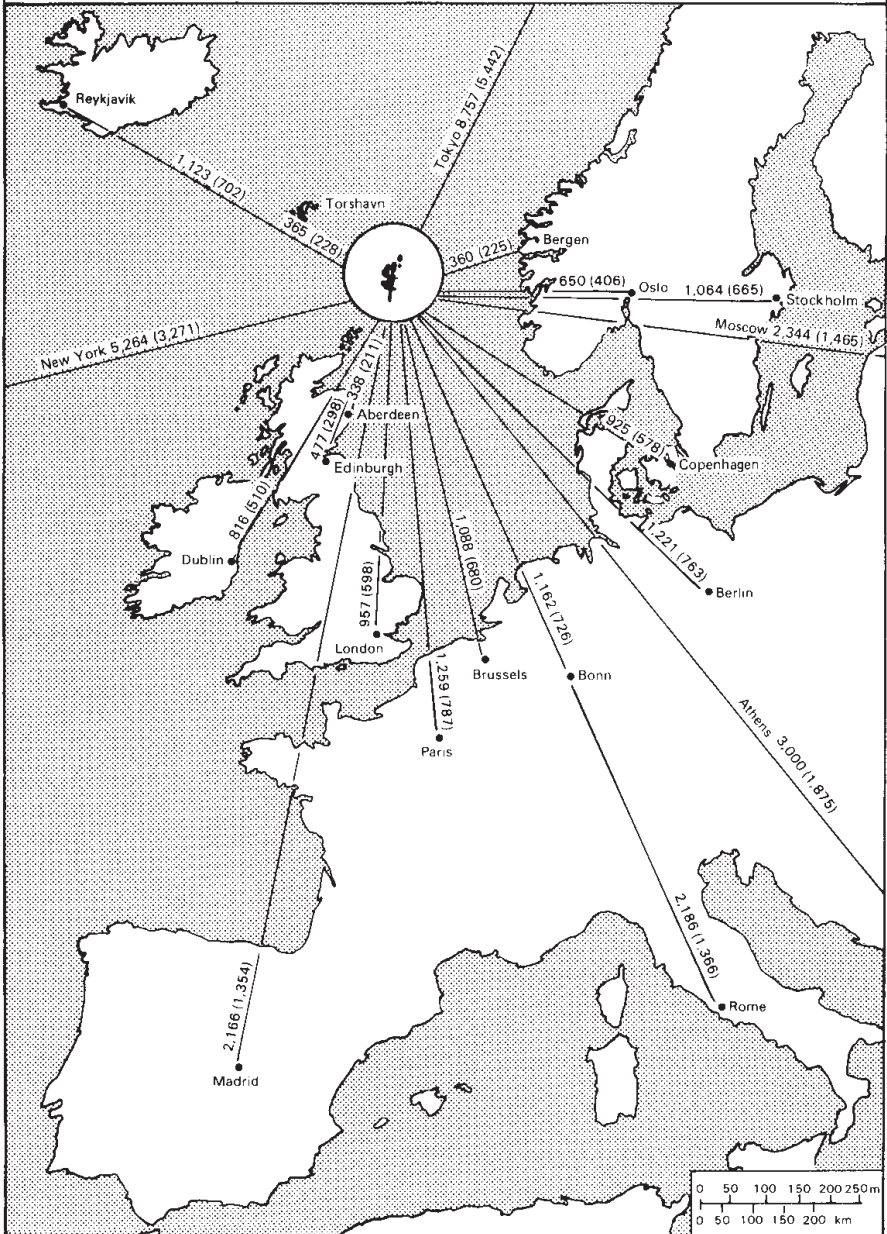
Contents

Physical:	Location	3
	Physical Characteristics	4
	Weather	5-8
	Population	9-11
Economy:	Economy and Industry	11
	Employment	12-14
	Fish Catching	15-18
	Fish Processing	19
	Shellfish Aquaculture	20
	Finfish Aquaculture	21
	Agriculture	22-23
	Tourism	24
	Oil	25-29
Transport:	Internal Transport	30-31
	Inter Island Ferries	30
	Overland Transport	32
	Vehicle Ownership	32
	External Ferries	33
	Lerwick Harbour	34-35
	Scalloway Harbour	35
	Air Services	36-38
Education and Services:	Education & Training	39-41
	Social Care Provision	41
	Health	42
	Housing & Property	42
	Leisure Facilities	43-44
	Crime	45
	Fire Service	46
	Energy	47
	Renewable Energy	47
	Water and Wastewater Services	48
Conservation:	Built Heritage	49
	Nature Conservation	50-51
Politics and Local Government:	Community Councils	52
	Electoral Statistics	53
	Shetland Islands Council Members	54-55
	Shetland Islands Council Departments	56
	Shetland Islands Council Finance	57
	Rating and Valuation	58
Culture and Media	59
Shetland Interest Publications	59-62

Shetland: Location

Lerwick is Lat 60°09' N
Lon 01°09' W

Approximate distances from Shetland
in kilometres (statute miles)



Shetland: Physical Characteristics

Distance by road in kilometres (miles) from Lerwick:

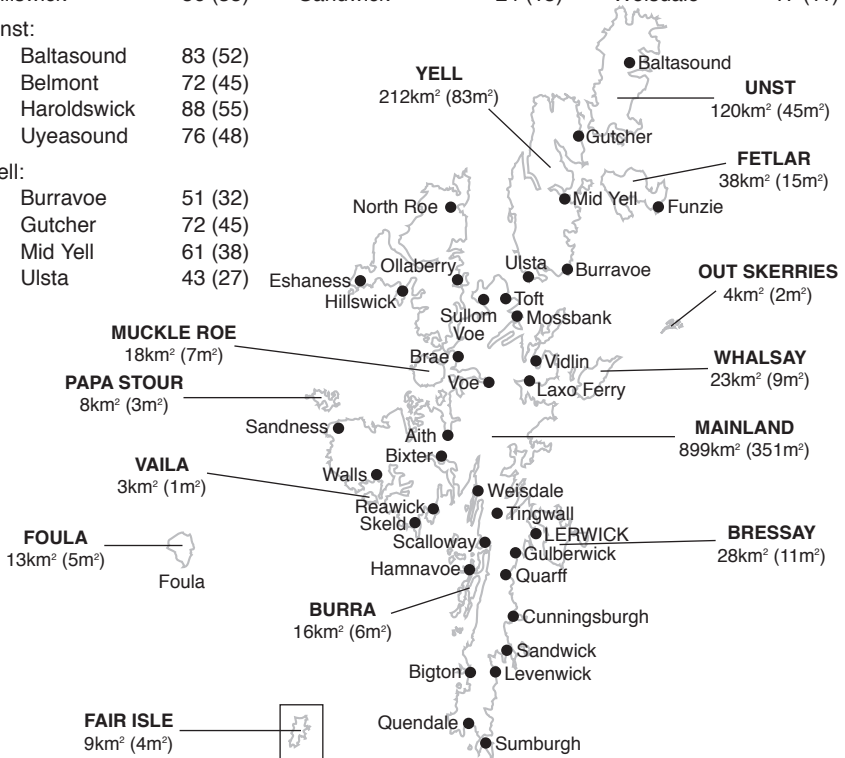
Aith	34 (21)	Laxo Ferry	35 (22)	Scalloway	13 (8)
Bigton	30 (19)	Levenwick	28 (18)	Skeld	40 (25)
Bixter	27 (17)	Mossbank	43 (27)	Sullom Voe	46 (29)
Brae	35 (22)	North Roe	61 (38)	Sumburgh	40 (25)
Cunningsburgh	18 (11)	Ollaberry	53 (33)	Tingwall	10 (6)
Eshaness	62 (39)	Quarff	11 (7)	Toft Ferry	43 (27)
Girlsta	16 (10)	Quendale	38 (24)	Vidlin	38 (24)
Gulberwick	6 (4)	Reawick	38 (24)	Voe	29 (18)
Hamnavoe, Burra	16 (10)	Sandness	46 (29)	Walls	40 (25)
Hillswick	56 (35)	Sandwick	24 (15)	Weisdale	17 (11)

Unst:

Baltasound	83 (52)
Belmont	72 (45)
Haroldswick	88 (55)
Uyeasound	76 (48)

Yell:

Burravoe	51 (32)
Gutcher	72 (45)
Mid Yell	61 (38)
Ulsta	43 (27)



Total Area of Shetland: 1,468 square kilometres (567 square miles)*

Total Length of coastline: approx 2,702 kilometres (1,697 miles)**

* Ordnance Survey, 1988

** Dr Lorraine Gray, 2007

Number of islands: 100+

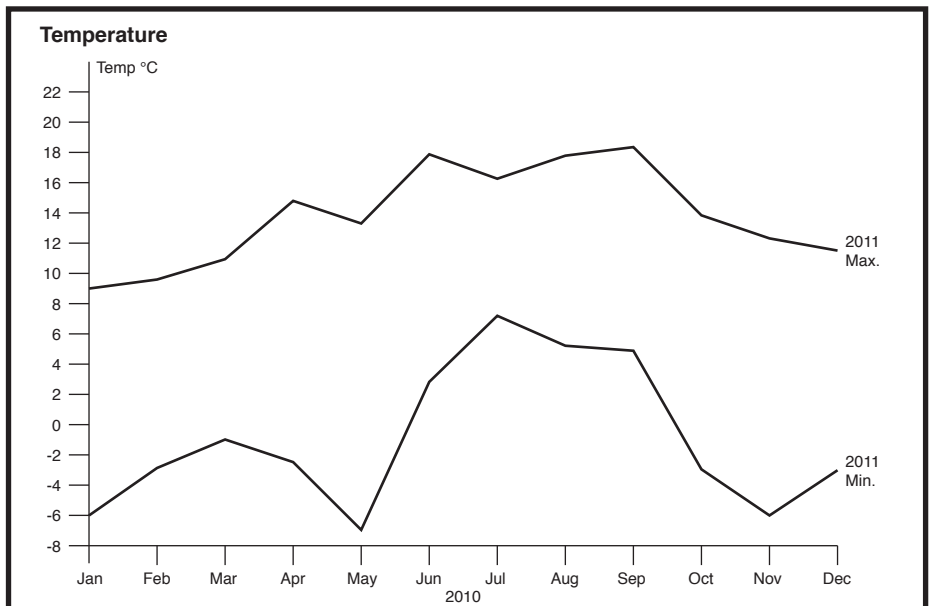
Number of inhabited islands: 15

Weather

Observations are recorded in Shetland by staff employed by the Meteorological Office in Lerwick. There are also official Auxiliary Synoptic Reporting Stations in Fair Isle and Foula. Observations from the Lerwick Observatory began in 1921, although the first full year of recordings was not until 1922. (Lerwick Observatory: 60°08'N, 01°11'W. Wind vane 93m above sea level). The recorded meteorological observations from Lerwick Observatory for 2011 are as follows:

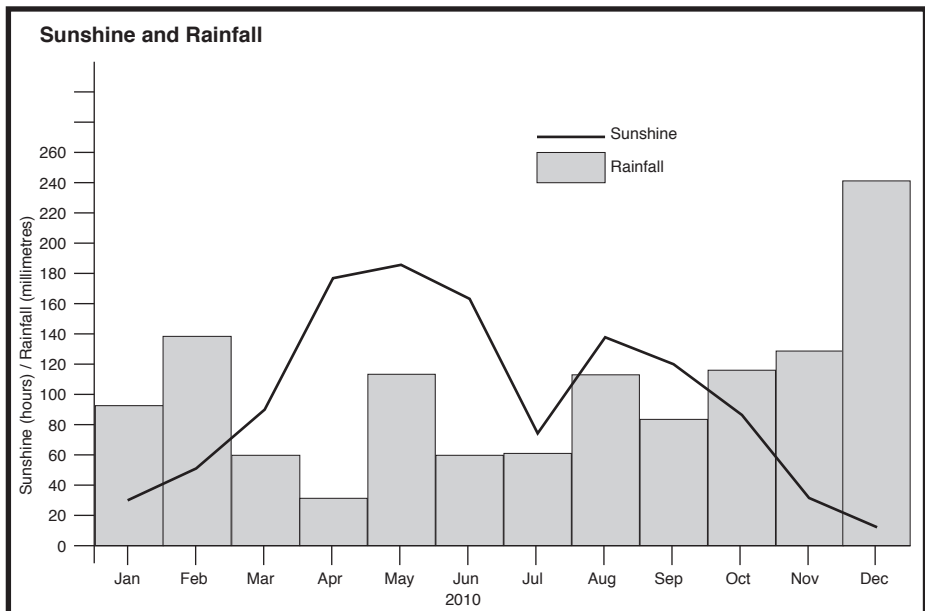
Temperature (°C)

	2011			Extreme Daily Values	
	Max	Min	Average Daily Mean (1930-2010)	Max	Min
Jan	9.0	-6.0	3.4	12.8 ('47)	-8.9 ('59)
Feb	9.6	-2.9	3.1	11.7 ('45)	-7.4 ('10)
Mar	10.9	-1.0	4.0	13.3 ('61)	-8.3 ('47)
Apr	14.8	-2.5	5.4	16.1 ('42)	-5.7 ('68)
May	13.2	-7.0	7.7	20.7 ('92)	-2.2 ('79)
Jun	17.9	2.7	10.0	23.3 ('58)	-0.6 ('51)
Jul	16.2	7.2	11.8	23.4 ('91)	3.5 ('65)
Aug	17.8	5.3	12.1	22.1 ('97)	2.8 ('43)
Sep	18.2	4.8	10.5	19.4 ('53)	-0.6 ('54)
Oct	13.8	-3.0	8.2	17.2 ('55)	-3.3 ('48)
Nov	12.3	-6.0	5.7	13.9 ('46)	-5.7 ('32)
Dec	11.5	-3.0	4.2	12.3 ('07)	-8.2 ('61)



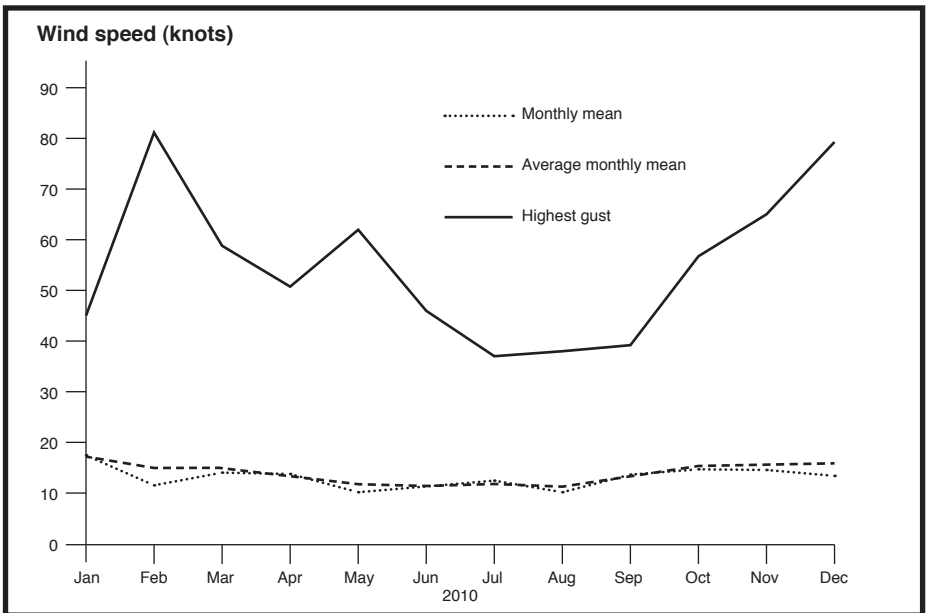
Sunshine and Rainfall (Monthly Totals)

	Sunshine (hours)			Rainfall (millimetres)		
	2011	Mean (1931-2010)	Highest Total (1930-2010)	2011	Mean (1931-2010)	Wettest Day (1922-2010)
Jan	29.9	25	44.6 ('97)	94.0	131	36.9 ('49)
Feb	52.9	54	92.4 ('86)	139.3	102	36.7 ('89)
Mar	90.5	87	124.2 ('74)	60.1	103	39.7 ('52)
Apr	178.9	132	194.1 ('66)	32.4	71	31.2 ('79)
May	185.3	162	253.4 ('06)	115.2	56	49.8 ('66)
Jun	163.9	151	239.8 ('09)	60.0	62	36.5 ('81)
Jul	76.3	123	180.2 ('65)	61.0	64	35.0 ('46)
Aug	138.1	124	202.1 ('97)	114.2	77	63.6 ('04)
Sep	120.5	97	152.1 ('87)	83.6	109	47.6 ('54)
Oct	86.1	65	105.8 ('03)	117.0	124	58.5 ('81)
Nov	31.5	34	59.2 ('00)	128.6	139	66.0 ('49)
Dec	13.8	16	40.9 ('96)	241.0	141	67.8 ('95)



Wind Speed (Knots)

	Monthly Mean 2011	Average Monthly Mean 1930-2010	2011	Highest Gust Extreme Values Speed	Year
Jan	17.5	17.7	45	95	1992
Feb	12.3	16.5	81	80	1981
Mar	14.0	16.2	59	74	1992
Apr	13.9	13.8	51	66	1992
May	10.1	12.3	62	65	1982
Jun	11.2	11.6	46	75	2000
Jul	12.5	11.0	37	56	1988
Aug	10.1	11.1	38	68	2005
Sep	14.4	13.6	39	84	1978
Oct	15.5	15.2	57	90	1980
Nov	15.0	16.1	65	78	2005
Dec	13.0	16.7	79	84	1988



Ozone

Lerwick is one of only two stations in the UK where measurements of ozone are made, the other being Camborne in Cornwall. These stations are part of the Met Office's UK Upper Air Observing Network. Ground based Dobson Spectrophotometers are used daily to measure total ozone, the largest part of which exists in the stratospheric ozone layer (at a height of 8-30 km). At Lerwick ozone concentration profiles are also measured using balloon borne ozonesondes.

Total ozone levels are at their peak in the late winter and early spring. However, it is also at this time when man-made substances can lead to enhanced ozone depletion in the stratosphere. It is difficult to quantify these losses precisely since levels vary naturally by large amounts.

Stratospheric ozone acts as a shield by absorbing potentially harmful ultraviolet (UV) radiation which would otherwise reach the earth's surface. (It should not be confused with tropospheric ozone. Part of this is a pollutant formed in the lower atmosphere (troposphere) by the action of sunlight on other compounds such as those from car exhausts.)

High quality measurements over the last 20 years suggest a long term rate of decrease in total ozone over the northern hemisphere of between 5-6% per decade during spring.

Ozone Values (Dobson Units)

	Monthly Mean			Lowest Daily Value			Highest Daily Value		
	2009	2010	2011	2009	2010	2011	2009	2010	2011
Jan	387	327	345	353	267	305	421	371	379
Feb	403	383	351	349	284	275	446	527	424
Mar	376	406	350	305	352	249	451	456	433
Apr	354	378	364	312	311	296	445	453	426
May	366	385	383	324	345	336	438	462	430
Jun	355	358	357	302	324	320	436	393	398
Jul	339	362	340	290	326	288	370	412	379
Aug	318	339	319	286	291	283	346	383	341
Sep	297	314	317	258	274	267	332	378	344
Oct	292	289	283	214	231	233	334	348	358
Nov	283	323	294	234	262	241	328	354	354
Dec*	—	—	—	—	—	—	—	—	—

* December values are not available due to low elevation of the sun in mid-winter.

Source: Department of the Environment, Food & Rural Affairs (DEFRA).

Population

After decades of decline the population of Shetland, which had fallen to nearly 17,000 in the mid-1960s, rose by 31% between 1971 and 1981 as a direct result of oil related activity. In the early 1980s the population fell due to out migration after the end of oil construction activity and difficulties at Sumburgh Airport. In the latter half of the 1980s and the early 1990s the population level became fairly stable. Based on recent population estimates since the 2001 Census, the population has continued to be relatively stable during the current decade.

Population Breakdown by Age and Sex

Age group	1971 Total	1981 Total	1991			2001			2011		
			M	F	Total	M	F	Total	M	F	Total
0-4	1,390	1,778	830	797	1,627	669	659	1,328	707	622	1,329
5-9	1,395	1,782	815	743	1,558	813	721	1,534	671	601	1,272
10-14	1,215	1,872	903	837	1,740	820	822	1,642	676	696	1,372
15-19	1,135	1,753	831	790	1,621	700	605	1,305	745	636	1,381
20-24	1,125	1,677	838	757	1,595	645	546	1,191	642	558	1,200
25-29	1,095	1,858	883	785	1,668	695	656	1,351	617	503	1,120
30-34	975	1,926	857	792	1,649	792	778	1,570	665	677	1,342
35-39	950	1,639	917	795	1,712	883	843	1,726	714	726	1,440
40-44	920	1,283	933	787	1,720	802	772	1,574	814	786	1,600
45-49	1,080	1,089	767	713	1,480	862	767	1,629	936	876	1,839
50-54	900	1,023	614	556	1,170	888	737	1,625	804	804	1,608
55-59	1,085	1,058	500	491	991	715	660	1,375	787	763	1,550
60-64	1,100	873	439	454	893	537	516	1,053	857	735	1,592
65-69	1,020	953	415	474	889	420	448	868	621	630	1,251
70-74	795	883	295	439	734	335	406	741	457	468	925
75-79	560	650	261	396	657	260	407	667	313	380	693
80-84	365	416	165	314	479	139	277	416	209	288	497
85 +	220	255									
85-89			72	182	254	78	188	266	112	203	315
90 +			24	61	85	18	109	127	58	116	174
Total	17,325	22,768	11,359	11,163	22,522	11,071	10,917	21,988	11,405	11,095	22,500

Sources: 1971-2001 figures from Population Census.

2011 mid-year estimates from General Register Office for Scotland.

Annual Mid-Year Population Estimates

	1999	2001	2003	2005	2006	2007	2008	2009	2010	2011
Shetland	22,510	21,988	21,870	22,000	21,880	21,950	21,980	22,210	22,400	22,500

Source: General Register Office for Scotland

Population of Shetland by Area based on Census

	1931	1961	1971	1981	1991	2001
Brae+	n/a	n/a	n/a	n/a	756	660
Bressay	452	269	251	334	352	384
Burra	767	648	565	850*	929	850
Cunningsburgh***	n/a	411	410	n/a	n/a	658
Delting	958	598	580	2,110	1,105	970
Dunrossness	1,089	857	848	1,591	1,502	1,471
Fair Isle	108	64	65	69*	67	69
Fetlar	217	127	88	101	90	86*
Foula	118	54	33	45*	42	32
Gulberwick/Quarff	1,518	385	171	579*	398	662
Lerwick	4,221	5,913	6,127	6,899	7,336	6,830
Muckle Roe	n/a	103	94	101	115	104
Nesting	822	434	380	506	512	570
Northmavine	1,343	816	696	898	878	841
Papa Stour	100	55	24	35*	35*	24
Sandsting	1,552	957	873	1,002	891	945
Sandwick	1,507	761	710	1,303*	1,352	774
Scalloway**	n/a	n/a	n/a	1,160	802	812
Skerries	110	108	101	88*	87	76
Tingwall	1,440	1,603	1,671	1,080	1,431	1,722
Trondra	91	20	17	88	117	133
Unst	1,341	1,151	1,127	1,140	1,055	720
Walls and Sandness	884	561	483	573	554	601
Whalsay	900	764	870	1,025	1,041	1,034
Yell	1,883	1,155	1,143	1,191	1,075	957
Total	21,421	17,814	17,327	22,768	22,522	21,988

* Estimated

** From 1931 to 1971 the population figures for Scalloway are included in the figures for Tingwall.

*** In 1931, 1981 and 1991 the population figures for Cunningsburgh are included in the figures for Sandwick

+ From 1931 to 1981 the figures for Brae are included in the figures for Delting.

Populations were enumerated on a slightly different basis at the 1981 and 1991 Censuses, and are therefore not strictly comparable.

1981 Census – Resident Population **excluding** absent households.

1991/2001 Census – Resident Population **including** absent households

Doctor Registration Areas Practice Totals

	1991	1996	2002	2004	2006	2008	2009	2010	2011	2012
Bixter	1,047	1,085	1,045	1,082	1,074	1,082	1,099	1,108	1,120	1,153
Brae	2,775	2,733	2,358	2,449	2,401	2,497	2,480	2,501	2,545	2,515
Lerwick	9,373	9,617	9,590	9,028	9,044	9,089	9,067	9,178	9,164	9,152
Levenwick	2,429	2,386	2,200	2,596	2,619	2,592	2,645	2,661	2,689	2,666
Hillswick	700	676	671	676	699	692	701	693	700	735
Scalloway	2,677	2,670	2,591	2,792	2,794	2,820	2,875	3,032	3,067	3,052
Unst	900	862	672	639	587	617	614	623	623	621
Walls	665	695	672	693	673	680	672	680	699	690
Whalsay	1,136	1,110	1,094	1,091	1,122	1,147	1,141	1,120	1,130	1,126
Yell	1,158	1,133	1,036	1,019	1,022	1,022	1,033	1,058	1,030	1,086
Total	22,860	22,967	21,929	22,065	22,025	22,220	22,327	22,654	22,767	22,796

Source: Shetland Health Board

Economy and Industry

Economic Performance*

An economic survey conducted by University of Aberdeen Business School calculated the overall value of the Shetland economy – based on the combined total output of all economic sectors – to be £860,537,000 in 2003. A subsequent survey conducted by the James Hutton Institute calculated the overall value of the local economy in 2011 to be £1,091,421,269.

The same survey calculated Shetland's Gross Regional Domestic Product in 2011 to be £485,000,000 which equates to a GRDP per capita value of £21,556, up from £18,589 in 2003.

Number of New Business Start-Ups by Selected Local Authority Area

	2003	2004	2005	2006	2008	2010	2011	2012
Aberdeen City	942	852	925	964	1,147	760	804	678
Aberdeenshire	1,222	1,048	1,087	1,193	1,261	844	995	947
City of Edinburgh	2,456	2,327	2,455	2,482	2,177	1,733	1,524	1,402
Eilean Siar	121	147	118	135	82	65	110	119
Glasgow City	2,390	2,436	2,409	3,108	2,301	1,737	1,570	1,469
Highland	1,159	1,003	1,029	1,101	1,015	984	846	909
Orkney Islands	94	82	94	82	60	55	50	77
Shetland Islands	111	109	85	111	84	56	101	82
Total above	8,495	8,004	8,202	9,176	8,127	6,234	6,000	5,683
All Scotland Local Authorities	21,468	20,808	21,383	23,468	20,028	15,439	14,737	13,856

Source: Committee of Scottish Clearing Bankers

* All 2003 figures adjusted for inflation to reflect 2011 prices.

Employment

Unemployment (%)

	1992	1996	2001	2006	2008	2009	2010	2011
Aberdeen City	4.2	4.5	1.8	1.5	1.2	2.0	2.2	2.4
Aberdeenshire	2.9	3.1	1.2	1.0	0.7	1.4	1.3	1.5
City of Edinburgh	7.2	5.6	2.3	2.2	1.7	3.0	3.1	3.2
Eilean Siar	8.7	8.9	4.4	2.8	1.9	3.3	3.0	2.9
Glasgow City	12.4	9.2	4.9	4.2	3.8	5.7	6.2	6.3
Highland	6.3	6.3	3.1	1.9	1.5	2.6	2.6	2.7
Orkney	3.3	3.1	2.1	1.4	0.7	0.9	1.5	1.5
Shetland	2.6	3.2	1.3	1.5	0.7	1.4	1.4	1.3
Shetland actuals: Jan	n/a	438	266	260	115	160	185	217
Shetland actuals: Jul	370	466	178	207	99	195	206	180
Scotland	7.5	6.2	3.3	2.7	2.3	3.9	4.0	4.3
Great Britain	7.6	5.8	2.5	2.4	2.2	3.9	3.6	3.8

Source: Office for National Statistics

Figures are based on the percentage of 16-64 population claiming Jobseeker's Allowance, and are taken from the third quarter of the year.

Employment in Shetland

	1971(a)	1977(b)	1981(c)	1991(d)	1997(d)	2000(d)	2007(e)	2011 (e)
Primary	279	322	938	1,258	1,465	1,055	1,136	1,247
Manufacturing	1,335	1,125	940	1,121	1,322	1,052	906	1,072
Construction	489	1,004	906	817	946	1,375	893	841
Services	2,885	4,400	6,189	5,817	8,125	8,416	9,309	10,426
Self Employed	1,445	1,450	1,452	1,691	–	–	–	–
Total	6,433	8,301	10,425	10,704	11,858	11,898	12,244	13,586

Statistics for Self-Employed are now included in the figures for Primary, Manufacturing, Construction and Services.

These figures do not include agricultural employment.

Sources:(a) 1971 Population Census and Department of Employment; (b) Department of Employment; (c) Research and Development Department, SIC estimate; (d) Development Department, SIC; (e) Economic Development, SIC

Employment by Sector (2011)

	Full-Time	Part-Time	Total	FTE**
Accommodation & Catering	334	412	746	471
Business Services	266	206	472	335
Construction	778	63	841	799
Energy	390	39	429	403
Fisheries & Agriculture	1,070	354	1,424	1,188
Health, Education & Social Work	692	906	1,598	994
Manufacturing	520	146	666	569
Public Administration	1,834	2,499	4,333	2,667
Transportation & Communications	728	233	961	806
Wholesale & Retail	734	665	1,399	956
Other	303	414	717	441
Total	7,649	5,937	13,586	9,628

Sources: Economic Development, SIC

** Full-Time Equivalent jobs – 3 PT jobs = 1 FTE

Employment by Occupation (%)

	2006			2008			2010			2011		
	Shet.	Scot.	UK	Shet.	Scot.	UK	Shet.	Scot.	UK	Shet.	Scot.	UK
Manager and Senior Officials	12.8	12.8	14.8	11.8	13.0	15.5	8.5	13.1	15.6	8.9	8.6	9.9
Professional Occupations	8.0	13.1	13.0	10.3	12.9	13.0	13.4	13.3	14.0	16.0	18.2	19.4
Associate Professional & Secretarial	9.9	13.9	14.3	8.8	14.9	14.5	12.7	14.6	14.6	11.2	13.4	13.9
Administrative and Secretarial	13.1	12.1	12.1	7.4	11.4	11.4	8.8	10.8	10.9	8.3	10.9	11.1
Skilled Trades Occupations	15.6	11.2	11.1	18.7	11.7	10.9	16.5	11.2	10.4	17.9	11.4	10.7
Personal Service Occupations	9.8	8.8	8.0	14.2	8.9	8.2	14.0	9.5	9.0	13.4	9.6	9.1
Sales & Customer Service	4.6	8.2	7.7	4.5	8.1	7.6	5.7	8.6	7.4	7.4	9.5	8.1
Process Plant & Machine Operatives	11.3	7.6	7.3	11.3	7.5	7.1	8.1	6.9	6.6	8.2	6.8	6.5
Elementary Occupations	15.0	12.1	11.4	13.0	11.3	11.4	12.3	11.7	11.1	8.4	11.4	11.0

Source: Office for National Statistics, Annual Population Survey

Economic Activity

	2004	2005	2006	2007	2008	2009	2010	2011
Shetland (%)*								
Economically active	86.3	86.4	87.2	87.7	87.2	88.1	88.1	82.9
In employment	85.0	83.7	82.7	86.3	86.0	84.7	71.0	82.3
Employees	72.1	71.5	69.1	73.3	74.6	74.6	73.8	71.2
Self-employed	10.9	11.9	11.4	10.9	11.4	9.6	11.2	10.9
In Employment (%)*								
Aberdeen City	74.4	77.3	79.9	77.8	78.2	78.5	77.9	75.9
Aberdeenshire	77.5	78.3	79.3	80.3	80.2	80.3	81.2	79.6
City of Edinburgh	74.0	74.9	74.9	75.3	74.8	72.5	70.4	71.8
Eilean Siar	77.8	78.9	77.8	77.9	77.4	71.1	68.7	63.6
Glasgow City	62.9	64.3	63.0	65.2	65.5	62.6	62.1	63.8
Highland	81.0	79.2	78.2	79.6	79.1	81.7	79.3	n/a
Orkney	83.4	82.7	81.1	83.7	81.8	85.0	79.8	79.3
Shetland	85.0	83.7	82.7	86.3	86.0	84.7	85.6	81.3
Scotland	72.5	72.9	73.6	73.8	73.5	71.9	71.0	70.7
Great Britain	72.4	72.5	72.4	72.4	72.1	70.5	70.2	70.1

Source: Office for National Statistics – annual population survey

* % of population aged 16-64

Gross Weekly Pay – Full-Time Workers (£) (median)

	2003	2004	2005	2006	2007	2008	2009	2010	2011
Aberdeen City	408.9	398.9	441.3	459.6	460.0	480.5	500.2	530.8	533.4
Aberdeenshire	421.7	417.9	446.0	467.8	477.2	521.1	532.6	545.5	540.0
City of Edinburgh	422.0	428.2	460.2	479.7	498.8	507.2	518.3	524.8	525.4
Eilean Siar	355.4	361.5	380.1	402.1	416.5	463.7	493.2	460.1	436.1
Glasgow City	359.5	384.0	395.9	396.4	415.7	434.1	451.9	452.4	460.0
Highland	352.5	365.2	380.6	398.8	407.6	425.3	455.5	456.4	n/a
Orkney	n/a	355.8	423.6	385.1	n/a	n/a	434.2	460.9	427.4
Shetland	422.1	452.9	465.6	384.4	446.0	461.2	506.5	502.2	545.7
Scotland	381.8	390.6	409.8	427.9	440.9	462.9	472.2	486.9	490.6
Great Britain	406.2	421.3	432.8	445.9	460.0	480.0	491.0	501.8	503.1

Source: Office for National Statistics - Annual Survey of Hours and Earnings

Fish Catching

Fish Landings in Shetland

	White Fish		Shell Fish		Sandeels	
	Tonnes	£	Tonnes	£	Tonnes	£
1971	17,954	1,057,691	783	159,370	0	0
1976	13,457	2,587,548	588	202,339	18,548	515,398
1981	11,444	3,212,175	695	328,200	40,731	1,173,560
1986	18,941	9,979,705	736	630,639	11,960	359,162
1991	10,603	10,823,185	1,004	1,402,010	8,249	392,776
1996	15,810	13,090,578	1,725	1,784,000	9,008	489,110
2001	10,868	12,739,484	1,234	1,633,827	1,264	55,081
2003	6,544	7,047,270	1,069	1,523,167	186	10,239
2004	7,831	9,041,518	1,137	1,705,539	566	34,177
2005	8,237	11,569,111	1,059	1,928,512	0	0
2006	9,850	16,519,671	1,740	4,838,272	0	0
2007	10,946	19,064,696	1,896	4,502,093	0	0
2008	13,011	23,938,551	2,222	5,363,367	0	0
2009	12,794	23,594,991	2,178	5,500,388	0	0
2010	12,139	22,770,014	2,117	5,833,780	0	0
2011	11,533	24,539,833	1,947	4,624,668	0	0

	Herring		Mackerel		Other Pelagic	
	Tonnes	£	Tonnes	£	Tonnes	£
1971	22,813	584,148	190	3,296	116	2,126
1976	4,010	461,243	775	38,623	973	64,895
1981	871	57,158	826	49,560	0	0
1986	51,230	5,216,706	226	29,558	313	31,302
1991	41,684	3,963,148	38,514	4,829,790	5,124	284,674
1996	27,440	2,286,944	5,995	1,957,673	20,004	1,184,439
2001	12,087	2,977,278	25,374	11,014,650	29,266	1,502,869
2003	19,590	2,345,649	47,934	19,961,840	32,554	2,295,523
2004	19,744	2,630,949	50,200	25,086,377	34,582	1,993,965
2005	26,412	5,724,696	66,950	40,794,629	31,358	1,509,625
2006	38,178	8,861,914	32,391	24,873,990	26,933	3,189,898
2007	24,426	4,286,223	51,588	35,091,393	29,984	4,583,065
2008	16,493	4,267,928	45,754	36,504,795	42,737	4,569,608
2009	4,725	1,418,140	46,900	40,281,696	8,975	1,959,664
2010	7,542	2,254,839	56,235	47,025,921	8,719	2,609,807
2011	9,440	4,608,464	44,136	56,113,363	2,146	1,119,601

White fish, shell fish and sandeel landings are by UK vessels only. Herring, mackerel and other pelagic statistics are by UK and foreign vessels.

Included in Whitefish Total

	1996		2001		2009		2010		2011	
	Tonnes	£	Tonnes	£	Tonnes	£	Tonnes	£	Tonnes	£
Cod	3,683	3,200,233	1,983	3,115,230	2,092	4,276,677	2,543	5,775,366	2,248	5,742,542
Haddock	3,347	1,952,526	2,880	2,768,423	2,677	3,589,337	2,192	3,136,235	2,337	3,424,847
Whiting	1,790	966,244	1,206	1,001,226	1,918	2,241,587	1,573	1,936,217	1,541	2,149,449
Monkfish	2,676	5,047,928	1,325	3,753,661	1,989	8,024,393	1,360	5,514,683	1,513	6,210,200

Weight and Value of Catch by Species for 2011 (all vessels)

Species	Weight (Tonnes)	Value (£)	Species	Weight (Tonnes)	Value (£)
Anglerfish (Monks)	1,513	6,210,200	Other Flatfish	1	1,912
Catfish	34	74,066	Other or mixed Demersal	17	18,868
Cod	2,248	5,742,542	Other Shellfish	>1	13
Crabs - Brown (Edible)	286	287,354	Plaice	216	194,415
Crabs - Green	26	20,197	Pollack (Lythe)	96	275,207
Crabs - Velvet (Swim)	263	813,747	Redfish	>1	257
Eels - Conger	10	7,941	Roes	6	16,757
Gurnards - Red	23	9,621	Saithe (Coalfish)	1,574	1,844,224
Haddock	2,337	3,424,847	Scallops	904	1,565,118
Hake	229	344,498	Scallops - Queen	9	8,553
Halibut	13	143,320	Skates and Rays	181	214,460
Herring	9,440	4,608,464	Sole - Lemon	85	352,627
John Dory	3	20,438	Squid	157	642,138
Ling	757	1,197,593	Turbot	8	82,370
Lobsters	29	363,655	Tusk	28	30,620
Mackerel	44,136	56,113,363	Whelks	20	10,071
Mackerel - horse	2,146	1,119,601	Whiting	1,541	2,149,449
Megrimms	598	2,192,592	Witches	83	127,051
Nephrops (Norway Lobster)	253	914,425	Total	69,271	91,142,573

All Fish Landed in Shetland 2011

	Demersal		Pelagic		Shell Fish	
	Tonnes	£	Tonnes	£	Tonnes	£
Jan	1,030	2,068,488	16,322	14,806,174	274	685,798
Feb	588	1,224,269	3,532	1,578,605	99	256,166
Mar	1,294	2,644,069	>1	5	185	458,089
Apr	803	1,764,808	>1	293	175	332,507
May	1,111	2,351,776	-	-	152	363,173
Jun	1,178	2,291,218	1	865	162	447,291
Jul	655	1,484,990	17	19,001	169	326,472
Aug	1,038	2,227,404	5,888	3,123,418	158	314,796
Sep	1,005	2,167,560	16,854	23,088,897	195	349,735
Oct	714	1,656,204	13,108	19,224,169	118	246,404
Nov	1,207	2,359,991	-	-	129	306,507
Dec	978	2,435,097	-	-	132	538,333
Total	11,602	24,675,874	55,722	61,841,428	1,948	4,625,271

Average Quay Prices per tonne (£)

	1981	1986	1991	1996	2001	2009	2010	2011
Cod	337.31	828.42	1,236.31	868.92	1,570.87	2,044.00	2,271.00	2,554.00
Haddock	274.25	565.40	1,143.52	583.37	961.40	1,341.00	1,431.00	1,465.00
Whiting	270.31	506.43	583.52	539.80	830.47	1,169.00	1,231.00	1,395.00
Monkfish	584.69	1,507.60	2,487.35	1,886.37	2,833.34	4,035.00	4,056.00	4,104.00

Total Wet Fish Landed in Shetland

	1981	1991	1996	2001	2009	2010	2011
Tonnes	53,872	104,187	78,627	77,556	73,487	84,634	67,323
£	4,492,453	21,338,570	20,907,671	28,284,281	67,774,875	74,660,581	86,517,302

Landings by Shetland Vessels outwith Shetland

	1971	1981	1986	1991	1996	2001	2009	2010	2011
Tonnes	3,322	28,805	39,735	38,953	63,375	61,210	59,732	49,529	51,064
£	382,056	2,741,617	5,554,051	8,077,129	20,727,987	23,075,860	46,677,875	32,470,371	48,523,080

Distribution of Licensed Vessels by District

	1971	1981	1986	1991	1996	2001	2007	2008	2009	2010	2011
Creek 1 – South Mainland			13	11	5	3	13	17	16	18	18
Creek 2 – Lerwick/Bressay			13	17	13	7	39	40	39	41	44
Creek 3 – Whalsay			49	33	22	21	37	42	31	32	33
Creek 4 – Out Skerries						4	4	8	9	6	6
Creek 5 – Yell/Fetlar/Unst			29	14	7	5	25	23	13	14	12
Creek 6 – Northmavine			14	7	4	4	8	9	7	7	5
Creek 7 – Central Mainland			–	–	0	5	8	14	10	10	11
Creek 8 – West Mainland			30	28	17	10	28	26	21	19	18
Creek 9 – Scalloway/Burra/Trondra			68	45	41	32	60	42	34	37	37
Total			216	155	113	91	226	208	177	182	182

Licensed Vessel Size

	Over 80ft	40-80ft	Under 40ft	Total
1971	0	64	152	216
1981	8	52	95	155
1986	16	36	76	128
	Over 25m	10-25m	Under 10m	Total
1991	20	46	23	89
1996	23	57	146	226
2001	23	35	177	235
2007	12	32	133	177
2008	12	37	133	182
2009	13	36	133	182
2010	14	35	138	187
2011	14	30	131	175

Source: Sea Fisheries Management Division Data Team, Marine Directorate

Employment in the Shetland Fishing Industry

	1996	1997	1999	2004	2005	2006	2007	2008	2009	2010	2011
Full-time (regular)	357	434	424	260	304	315	352	257	246	231	236
Part-time (irregular)	145	249	199	187	147	156	174	216	184	217	197
Total	502	683	623	447	451	471	526	473	430	448	433

Sources: Sea Fisheries Management Division Data Team, Marine Directorate;
UK Sea Fisheries Statistics, DEFRA

Marine Protection

The enforcement of UK and EU Common Fisheries Policy regulations is the responsibility of Marine Compliance – Scotland through inspections and observations by its protection vessels and sightings by surveillance aircraft.

The statistics below relate to activity in UK waters north of 59°30'N, and between 4°W and the UK/Norwegian median line.

Vessel Nationality	Fisheries Protection Vessel Boardings				Fisheries Protection Vessel Sightings				Fisheries Protection Aircraft Sightings			
	2001	2006	2010	2011	2001	2006	2010	2011	2001	2006	2010	2011
Belgium	0	0	0	0	0	0	0	0	0	0	0	0
Denmark	14	2	1	1	22	10	8	24	125	92	63	24
Eire	3	1	1	3	5	6	3	37	38	56	43	50
Faroe	2	0	1	0	9	2	1	0	20	7	11	4
France	20	5	2	3	41	19	18	13	116	121	69	97
Germany	11	7	0	0	15	27	6	11	66	70	25	22
Iceland	0	0	0	0	0	0	0	0	3	3	0	0
Netherlands	8	2	5	1	16	7	10	14	30	47	54	37
Norway	49	32	29	23	125	70	75	120	96	456	371	268
Spain	0	0	0	0	0	0	0	0	0	0	0	1
Sweden	0	0	0	0	4	0	1	1	28	4	16	2
UK	321	109	93	74	1,273	463	480	389	2,967	2,046	1,418	999
Other	0	1	0	0	3	5	4	1	10	22	4	10
Total	428	159	132	105	1,513	609	606	610	3,701	2,924	2,074	1,514

Source: Marine Scotland

Fish Processing

Processing +

	1977	1981	1986	1991	1996	2001	2006	2007	2009	2010	2011
Firms	11	10	11	14	16	20	22	23	18	19	18
Factories	15	13	14	15	17	21	22	23	19	20	19

Processing Lines +

	1977	1981	1986	1991	1996	2001	2006	2007	2009	2010	2011
White Fish	11	10	12	5	6	10	7	8	6	7	7
Herring & Mackerel	3	2	1	1	1	7	7	8	5	5	5
Fish Meal Plants	3	1	2	1	1	1	1	1	1	1	1
Shellfish	3	2	2	3	3	8	12	13	10	10	11
Salmon	0	0	0	7	6	14	13	14	8	8	8
Smoking	3	2	2	3	3	7	5	6	5	4	4

Value (estimated turnover £ m) +

	1991	1996	1999	2001	2005	2006	2007	2009	2010	2011
	25.00	51.50	78.44	106.00	105.00	118.00	137.00	133.00	162.00	128.6

Source: Seafood Shetland

Employment +

	1981	1986	1991	1996	2001	2004	2006	2007	2009	2010	2011
Full-time				328	448	290	302	325	251	204	266
Part-time	480	567	578	234	209	82	86	100	46	162	97
Total	480	567	578	562	657	372	388	425	297	366	363

Sources: Seafood Shetland, Shetland Fisheries Training Association and Economic Development, SIC

+ Figures from Seafood Shetland members only

Shellfish Aquaculture

Scottish Shellfish Production 2011

Region	Com- panies	Mussels (tonnes)		Native Oyster (000s)		Pacific Oyster (000s)		Queen Scallops (000s)		Scallops (000s)	
		Table	On- growing	Table	On- growing	Table	On- growing	Table	On- growing	Table	On- growing
Highland	46	692	75	0	0	461	1,360	2	0	78	104
Orkney	5	0	0	0	0	0	0	0	0	0	0
Shetland	29	4,567	178	0	0	25	0	0	0	0	0
Strathclyde	56	736	3	350	1	2,635	40	25	0	0	0
Western Isles	17	1,001	26	0	0	15	0	0	0	0	0
Total	153	6,996	282	350	1	3,136	1,400	27	0	78	104
Weight (tonnes)		6,996	282	28	-	251	-	1	-	9	-

Mussel Production (tonnes)

	2001		2008		2009		2010		2011	
	Table	On- growing	Table	On- growing	Table	On- growing	Table	On- growing	Table	On- growing
Shetland	822	0	3,506	0	3,698	138	3,840	138	4,567	178

Active and Producing Farm Sites 2011

Sites	Highland	Orkney	Shetland	Strathclyde	Western Isles	Total
Active	75	6	121	90	43	335
Producing	28	2	65	42	24	161

Employment in Shellfish aquaculture

	2001	2003	2005	2006	2007	2008	2009	2010	2011
Full-time	21	29	50	49	47	46	54	61	61
Part-time	37	49	50	64	45	46	44	54	46
Casual	27	13	21	23	24	12	11	18	15
Total	85	91	121	136	96	104	109	133	122

Source: Scottish Shellfish Farm Production Survey; Crown copyright, reproduced with the permission of Fisheries Research Services, Aberdeen.

Finfish Aquaculture

Manpower and Production by Region

Region	Staff		Annual Prod. (tonnes)	Prod. (t/man)	Grilse		Pre-salmon		Salmon		
	F/T	P/T			Tonnes Mean	wt (kg)	Tonnes Mean	wt (kg)	Tonnes Mean	wt (kg)	
Shetland	1991	202	102	10,614	35	826	2.8	4,322	3.1	5,466	3.9
	1996	209	114	19,710	61	2,042	2.8	8,814	3.9	8,854	4.8
	2001	227	52	39,745	142	4,905	3.7	16,441	4.3	18,269	4.4
	2006	190	18	39,278	189	3,765	4.3	16,134	4.9	19,379	4.8
	2007	182	25	40,795	197	2,663	4.5	17,838	4.5	20,294	4.9
	2008	202	26	42,593	187	3,970	4.1	13,982	3.9	24,550	4.6
	2009	188	22	43,785	208	4,873	3.3	16,183	4.6	22,664	4.6
	2010	178	23	45,439	226	3,624	4.9	17,179	5.0	24,636	5.3
	2011	189	22	35,493	168	4,611	4.7	16,071	5.1	14,693	4.5
	Scotland	1991	1,014	272	40,593	32	7,449	2.1	13,577	2.6	19,567
1996		1,151	242	83,121	60	25,776	3.0	32,222	3.8	24,485	4.5
2001		1,066	191	138,520	110	42,066	3.8	54,473	4.7	40,754	4.5
2006		790	81	131,847	151	18,162	4.2	45,937	4.7	67,357	4.7
2007		798	118	129,930	142	15,811	4.1	45,079	4.5	69,000	4.6
2008		849	100	128,606	135	15,296	4.1	39,463	4.2	73,631	4.6
2009		874	89	144,247	150	23,857	4.2	53,764	5.0	66,448	4.7
2010		944	120	154,164	145	29,733	4.3	56,093	4.9	68,070	5.0
2011		923	90	158,018	156	35,146	4.6	55,959	5.0	66,606	4.8

Survival and Production in Smolt Year Classes

	Smolts Put To Sea		Harvest in Year 0			Harvest in Year 1			Harvest in Year 2			Total Harvest (= survival)	
	Year	No (000s)	Year	No	%	Year	No	%	Year	No	%	Year	No
Shetland	1996	6,234	1996	–	–	1997	3,828	61.4	1997	1,141	18.3	4,969	79.7
	2001	17,398	2001	123	0.7	2002	6,465	37.2	2003	7,973	45.8	14,561	83.7
	2005	10,824	2005	–	–	2006	4,162	38.4	2007	4,175	38.6	8,337	77.0
	2006	13,180	2006	–	–	2007	4,578	34.7	2008	5,349	40.6	9,927	75.3
	2007	14,947	2007	–	–	2008	4,530	30.3	2009	4,930	33.0	9,460	63.3
	2008	13,816	2008	47	0.3	2009	4,992	36.1	2010	4,659	33.4	9,698	69.6
	2009	10,031	2009	29	0.3	2010	4,201	41.9	2011	–	–	–	–
	2010	11,573	2010	–	–	2011	–	–	2012	–	–	–	–
	2011	11,206	2011	49	0.4	2011	–	–	2011	–	–	–	–
	Scotland	1996	34,908	1996	315	1.9	1997	20,245	61.5	1997	5,148	15.6	25,708
2001		48,643	2001	557	1.1	2002	23,528	48.4	2003	15,619	32.1	39,704	83.6
2005		37,168	2005	–	–	2006	14,036	37.8	2007	14,999	40.3	29,035	74.9
2006		41,091	2006	115	0.3	2007	13,787	33.5	2008	15,881	38.6	29,783	72.5
2007		37,853	2007	23	0.06	2008	13,011	34.4	2009	14,733	37.3	27,767	71.8
2008		36,626	2008	116	0.3	2009	16,338	44.6	2010	13,666	37.3	30,120	82.2
2009		38,548	2009	81	0.2	2010	18,266	47.4	2011	–	–	–	–
2010		38,490	2010	128	0.3	2011	–	–	2012	–	–	–	–
2011		42,733	2011	109	0.3	2011	–	–	2011	–	–	–	–

Source: Scottish Fish Farms Annual Production Survey; Crown copyright, reproduced with the permission of Fisheries Research Services, Aberdeen

Agriculture

Main and Minor Holdings

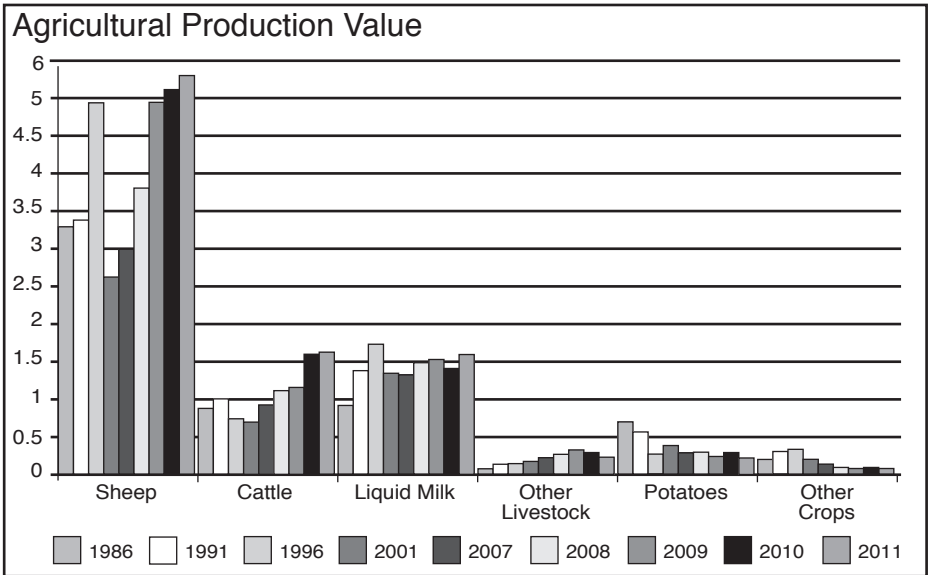
	1971	1981	1991	2001	2009	2010	2011
Land Use (ha):							
Tillage	1,410	1,062	740	437	333	281	269
Grassland and Crops	8,407	8,400	14,304	22,016	27,537	27,040	26,876
Rough/Common Grazing	129,019	133,160	130,943	124,021	123,108	n/a	n/a
Total Area Rented	38,130	36,046	36,781	43,060	36,657	42,264	42,238
Total Area Owned	28,161	30,368	33,840	35,622	37,663	38,169	38,695
No of Holdings	2,439	2,240	2,311	2,076	1,903	n/a	n/a
No of Common Grazings	93	93	100	141	160	159	n/a
Area Under Crops (ha):							
Grass (excl Rough Grazings)	6,998	7,338	13,563	21,580	27,204	26,759	26,607
Barley and Oats	857	511	214	50	n/a	100	119
Turnips and Swedes	134	103	106	40	46	15	12
Kale and Cabbage	73	34	30	15	15	7	7
Potatoes	256	232	144	53	n/a	23	18
All Other Crops	17	25	126	112	111	128	40
Livestock:							
Beef Cows and Heifers	2,492	1,896	2,129	2,172	2,066	2,131	1,968
Dairy Cows and Heifers	791	593	655	617	484	522	545
Total Cattle	6,945	5,103	5,701	5,756	5,498	5,507	5,342
Breeding Ewes and Gimmers	n/a	n/a	210,630	215,480	153,549	151,560	152,444
Total Sheep	264,779	297,558	387,468	393,686	283,659	281,644	280,793
Pigs	9	83	28	112	77	87	177
Poultry	12,950	8,672	4,428	4,972	4,905	4,977	5,613
Registered Slaughterhouses	9	8	4	3	2	2	1
Wool Production (est kg)	218,000	245,000	337,000	323,220	n/a	273,170*	300,487
Imports							
Cattle	n/a	n/a	n/a	n/a	59	66	75
Horses	n/a	n/a	n/a	n/a	52	66	92
Pigs	n/a	n/a	n/a	n/a	77	38	6
Sheep	n/a	n/a	n/a	n/a	549	451	648
Exports							
Cattle	1,947	2,066	2,117	1,031	1,732	2,341	1,983
Horse	417	407	239	232	234	246	200
Pigs	0	0	0	0	0	2	2
Sheep	43,464	60,542	99,404	114,251	92,371	86,695	92,569
Milk:							
Dairy Units	23	23	16	7	6	6	n/a
Milk Production (litres)	1,428,975	2,069,550	2,584,564	2,410,045	2,350,795	2,210,255	n/a
Employment:							
F/T and P/T Employees	222	204	244	336	264	211	256
F/T and P/T Occupiers	439	457	637	599	1,176	1,280	409
Others (including occupiers less than half time, wives/husbands of occupiers and casual/seasonal labour)	584	718	1,591	1,655	691	625	1,453

Sources: Rural Environment Research and Analysis Directorate, Scottish Government; Lerwick Port Authority; Shetland Farm Dairies Ltd. and Shetland Wool Brokers.

* Estimated

Production

Value (estimated £m)	1986	1991	1996	2001	2007	2008	2009	2010	2011
Sheep	3.28	3.35	4.93	2.63	3.00	3.78	4.95	5.10	5.63
Cattle	0.86	1.00	0.73	0.64	0.92	1.12	1.16	1.56	1.57
Liquid Milk	0.90	1.40	1.74	1.43	1.40	1.50	1.51	1.47	1.56
Other Livestock (inc eggs)	0.11	0.12	0.13	0.14	0.24	0.29	0.34	0.33	0.24
Potatoes	0.65	0.58	0.27	0.43	0.29	0.31	0.25	0.30	0.22
Other Crops	0.22	0.35	0.36	0.26	0.15	0.11	0.10	0.13	0.10
Total	6.02	6.80	8.16	5.53	6.00	7.11	8.31	8.89	9.32



Source: Economic Development, SIC

Scottish Government & EU Assistance (£m)

	1986	1991	1996	2001	2007	2008	2009	2010	2011
Annual Premium Schemes *	0.89	3.29	4.71	3.04	-	-	-	-	-
Environmentally Sensitive Area	-	-	0.13	2.01	1.61	1.37	1.06	0.55	0.23
Hill Livestock Compensatory Allowance	1.33	1.61	1.25	-	-	-	-	-	-
Land Management Contract Menu Scheme	-	-	-	-	0.29	0.43	0.32	0.47	0.02
Less Favoured Areas Support Scheme	-	-	-	1.92	2.14	2.17	2.49	2.49	2.56
Organic Aid Scheme	-	-	-	-	0.03	0.03	0.02	0.01	-
Rural Priorities	-	-	-	-	-	-	0.06	0.38	1.29
Rural Stewardship Scheme	-	-	-	-	0.45	0.42	0.43	0.31	0.25
Scottish Beef Calf Scheme	-	-	-	-	0.10	0.12	0.14	0.14	0.12
Single Farm Payment Scheme	-	-	-	-	3.95	4.35	5.02	4.93	4.66
Total Assistance	2.22	4.90	6.09	6.97	8.54	8.86	9.54	9.27	9.13
Total Production Value and Value of Assistance	8.24	11.70	14.25	12.50	14.54	15.97	17.79	18.16	18.45

* Prior to 2005 individual schemes are recorded collectively under Annual Premium Schemes

Tourism

Employment

	2007		2011	
	FT	PT	FT	PT
Accommodation: Hotels	155	122	171	105
Accommodation: B&Bs & Guest Houses	29	41	22	37
Accommodation: Self-Catering	0	30	8	30
Catering	140	228	133	240
Transportation & Communication	204	98	199	109
Visitor Attractions & Services	90	52	100	60
Total	618	571	633	581

* Travel agents, tour operators, etc.

Source: Economic Development, SIC

VisitShetland Bed Spaces

Type of Accommodation	1976	1986	1991	1996	2006	2008	2009	2010
Hotels Lerwick	149	272	294	296	336	312	312	312
Hotels Country	292	310	301	295	152	194	239	239
Guest Houses Lerwick		29	31	75	127	132	109	109
Guest Houses Country			124	97	95	47	49	90
Bed & Breakfast Lerwick	206	71	93	65	32	28	24	24
Bed & Breakfast Country	154		107	208	143	102	89	85
Self Catering Lerwick		285	23	38	114	132	140	140
Self Catering Country	169		515	383	549	302	402	402
Hostels Lerwick		146	48	64	64	64	64	64
Hostels Country	76		99	61	35	63	75	75
Camp Sites Lerwick		117	28	60	50	50	50	50
Camp Sites Country	0		42	39	104	98	111	111
Böds	0	0	0	63	76	76	76	76
Total	1,046	1,461	1,779	1,677	1,788	1,589	1,777	1,777

Cruise Liner Passengers (Lerwick Harbour)

1981	1986	1991	1996	2001	2005	2006	2007	2008	2009	2010	2011
3,564	6,279	5,240	12,852	11,601	17,352	25,966	18,462	17,148	24,146	30,843	30,747

Cruise Liner Arrivals (Lerwick Harbour)

1988	1991	1996	2001	2005	2006	2007	2008	2009	2010	2011
20	21	35	42	48	43	42	41	46	48	50

Source: Lerwick Port Authority

The North Sea oil industry has long been recognised as a key component of not only Shetland's economy but the economy of the UK as a whole. At a local level this reflects in three main areas: Sullom Voe Oil Terminal, the offshore oil and gas fields and the services related to both of these.

Sullom Voe Oil Terminal

The terminal is situated at Calback Ness on a site of approximately 400 hectares (1,000 acres) on the shores of Sullom Voe, 46km (29 miles) north of Lerwick. BP Exploration Operating Company Ltd operates the terminal on behalf of companies participating in the Brent and Ninian pipeline groups. The terminal currently has a throughput design capacity of 1.2 million barrels of crude oil per day and reached a peak in 1984 with a total receipt of 439,434,656 barrels (58,328,785 tonnes).

Exploration and Development

- 1970** – The exploration phase for oil and gas offshore Shetland began when the Government allocated the first Licence Blocks.
- 1975** – The development phase including the laying of the Brent and Ninian pipeline systems and the floatout of the Beryl and Brent field production platforms. Construction work began on the Sullom Voe Oil Terminal.
- 1978** – The first oil was piped to Sullom Voe through the Brent pipeline from the Dunlin oilfield on 25 November. The first oil was shipped out from the terminal by the Shell tanker 'Donovania' five days later and on 3 December the first oil arrived through the Ninian pipeline from the Heather oilfield.
- 1980** – Construction workforce peaked at over 7000.
- 1982** – In April the first fractionation of gas took place at the terminal and a month later the first gas was shipped out. In December the final construction and commissioning work at the terminal was completed and Sullom Voe received its one billionth (1,000 million) barrel of oil.
- 1994** – In August the terminal recorded one million manhours without a lost time injury.
- 1997** – On 13 June the six billionth barrel of crude oil was produced at the terminal.
- 1998** – During April the terminal was awarded, for the fourth consecutive year, the Gold Award for Occupational Safety by the Royal Society for the Prevention of Accidents. On 24 April the 'Hellespont Grand' became the largest tanker to visit the terminal with a dead-weight of 421,680 tonnes, and took the largest cargo from the terminal, 376,000 tonnes. In May the LPG ship 'Havrim', 37,300 cu.m., was the 1,000th LPG vessel to visit the terminal since operations commenced. On 8 August the 'Nordic Savonita' offloaded the first cargo of oil, 38,000 tonnes/300,000 barrels, from the Schiehallion field, west of Shetland. The 'Windsor' was the first tanker to collect a cargo of 630,000 barrels of Schiehallion crude, bound for Rotterdam on 19 August. October saw the longest tanker 'Empress Des Mers' to berth at Sullom Voe. This Nassau registered tanker was 381.82 metres long.
- 1999** – On 6 January the 'Hellespont Grand' took the largest cargo of oil from the terminal: 395,567 tonnes.
- 2001** – On 15 December the seven billionth barrel of oil was produced at the terminal.
- 2005** – The Clair Field, 47 miles west of Shetland, produced its first oil on 24 February. In May the 'Shetland Spirit' became the first tanker to export oil from this field, with a cargo of 90,392 tonnes.
- 2010** – Construction work began on the new gas processing plant on 29 April, to which gas from the Laggan and Tormore fields will come ashore. During peak construction, in 2012, there are expected to be 700 workers on site.

UK Port Traffic, Bulk Fuel and Crude Oil Handling Ports 2011

Port Traffic (foreign & domestic)	'000 Tonnes	% UK Traffic	Oil & Gas Traffic (foreign & domestic)	'000 Tonnes	% UK Traffic
Grimsby & Immingham	57,227	11.3	Milford Haven	47,866	21.9
London	48,796	9.6	Southampton	25,106	11.5
Milford Haven	48,699	9.6	Forth	22,848	10.5
Southampton	37,878	7.5	Tees & Hartlepool	20,495	9.4
Tees & Hartlepool	35,198	6.9	Grimsby & Immingham	20,314	9.3
Liverpool	32,660	6.4	London	19,047	8.7
Forth	27,878	5.5	Liverpool	11,901	5.4
Felixstowe	26,817	5.3	Sullom Voe	10,134	4.6
Dover	24,251	4.8	All major UK ports	218,547	100.0
Medway	16,076	3.2			
Belfast	13,561	2.7	Crude Oil	'000 Tonnes	% UK Traffic
Clyde	13,431	2.7	Milford Haven	17,250	15.3
Rivers Hull and Humber	10,187	2.0	Tees & Hartlepool	16,016	14.2
Sullom Voe	10,153	2.0	Forth	15,768	13.9
Hull	9,286	1.8	Southampton	13,580	12.0
All major ports	506,996	100.0	Liverpool	10,742	9.5
			Sullom Voe	10,134	9.0
			All major UK ports	113,045	100.0

Source: Maritime Statistics Branch, Department for Transport

Sullom Voe Terminal: Oil Throughput – Tonnes

	1978	1981	1986	1991	2001	2006	2009	2011
Brent Pipeline System	856,991	23,116,490	38,692,099	20,263,701	13,368,931	6,369,416	3,759,897	4,813,537
Ninian Pipeline System	92,186	15,545,240	16,875,047	15,576,512	5,994,252	4,525,451	2,427,968	2,168,138
Schiehallion	-	-	-	-	5,441,468	3,281,822	920,447	729,213
Clair	-	-	-	-	-	1,244,317	2,708,161	1,615,874
Total	949,177	38,661,730	55,567,146	35,840,213	24,804,651	15,421,006	9,816,473	9,326,762

Sullom Voe Terminal: Barrels per Day

	1978	1981	1986	1991	2001	2006	2009	2011
Brent Pipeline System	177,526	478,094	800,134	419,864	277,732	131,859	77,875	99,474
Ninian Pipeline System	23,439	317,083	346,513	322,592	124,520	93,695	50,280	44,803
Schiehallion	-	-	-	-	110,966	62,933	17,636	13,962
Clair	-	-	-	-	-	24,804	51,282	29,735
Total	200,965	795,177	1,146,647	742,456	513,218	313,291	197,074	187,974

Sullom Voe Terminal: Total Barrels

	1978	1981	1986	2001	2006	2008	2009	2011
Brent Pipeline System	6,390,951	174,504,301	292,048,824	101,372,220	48,128,671	32,021,815	28,424,425	36,307,877
Ninian Pipeline System	679,725	115,735,451	110,640,234	45,449,979	34,198,831	23,140,625	18,352,361	16,353,127
Schiehallion	-	-	-	40,502,624	22,970,411	16,157,561	6,437,098	5,096,308
Clair	-	-	-	-	9,053,626	16,755,227	18,718,064	10,853,157
Total	7,070,676	290,239,752	371,062,957	187,324,823	114,351,539	88,075,228	71,931,948	68,610,469

Sullom Voe Terminal: Gas Throughput (tonnes)

	Brent Pipeline System Propane	Brent Pipeline System Butane	Ninian Pipeline System Propane	Ninian Pipeline System Butane	Total Propane	Total Butane
1986	476,742	375,641	346,478	254,621	823,220	630,262
1991	89,961	57,906	260,536	190,250	350,497	248,164
1996	73,381	18,284	214,052	174,388	287,433	192,672
2001	32,479	22,647	57,746	41,542	90,225	64,189
2006	16,302	9,126	41,856	31,896	58,158	41,022
2008	8,443	6,847	11,322	10,412	19,765	17,259
2009	6,736	4,801	11,478	12,422	18,214	17,223
2010	5,403	4,290	5,469	4,596	10,872	8,886
2011	0	0	0	0	0	0

Sullom Voe: Tankers Using Port

	1979	1981	1986	1991	1996	2001	2006	2007	2008	2009	2010	2011
Oil	270	432	654	423	395	295	199	193	183	144	149	131
Gas	0	0	112	45	32	12	11	6	3	4	3	0

Permanent Terminal Workforce

	1978	% local	1981	% local	1986	% local	1991	% local
SIC Marine Operations	32	66	92	63	99	72	94	71
Shetland Towage	25	80	86	88	92	93	94	100
BP	113	31	407	48	583	59	516	58
Sub-Contractors	n/a	n/a	336	41	223	68	406	56
Total Employees	170	45	921	50	997	73	1,110	62

	2001	% local	2006	% local	2007	% local	2008	% local
Ports and Harbours SIC*	106	97	142	100	131	100	139	100
Shetland Towage	71	100	–	–	–	–	–	–
BP	315	100	220	100	220	100	212	100
Sub-Contractors	514	67	350	72	350	n/a	350	n/a
Total Employees	1,006	83	712	86	701	n/a	701	n/a

Sources:BP Exploration Operating Co Ltd; Shetland Towage; Ports and Harbours, SIC and Economic Development Unit, SIC

* In 2002, Marine Operations became known as Ports and Harbours

Marine Service Base

Base	Area (ha)	Berths Operational
Shetland Base Services Ltd (Green Head, Lerwick)	16.20	9

Berthage for supply vessels is also available at Scalloway and Baltasound Harbours

Oilfields in Production

Name of Field	Field on Stream	Operator	Production		Cumulative Production	
			('000 barrels)*		('000 barrels)	
Brent Pipeline			2010	2011	2010	2011
Brent	1976	Shell	2,351	721	1,955,502	1,956,223
Dunlin	1978	Fairfield Energy Ltd.	1,410	658	373,872	374,530
Thistle	1978	Lundin Thistle Ltd.	1,576	1,802	399,383	401,185
South Cormorant	1979	Taqa Bratani	1,209	1,356	205,968	207,324
Murchison	1980	CNR (International) Ltd.	890	1,089	294,136	295,225
North Cormorant	1982	Taqa Bratani	3,921	2,636	414,139	416,775
Deveron	1984	Lundin Thistle Ltd.	139	125	16,113	16,238
Alwyn North	1987	Total E & P UK plc.	1,529	2,366	276,021	278,387
Eider	1988	Shell	510	415	111,396	111,811
Tern	1989	Taqa Bratani	3,091	3,409	279,467	282,876
Osprey	1991	Fairfield Energy Ltd.	1,115	555	90,531	91,086
Dunbar	1994	Total E & P UK plc.	2,533	1,875	152,943	154,818
Eilon	1994	Total E & P UK plc.	442	323	12,034	12,357
Hudson	1994	Dana Petroleum (E&P) Ltd.	1,630	1,339	106,769	108,108
Dunlin SW	1996	Fairfield Energy Ltd.	156	35	10,783	10,818
Pelican	1996	Shell	1,321	2,506	61,391	63,897
Merlin	1997	Fairfield Energy Ltd.	178	176	25,474	25,650
Grant	1998	Total E & P UK plc.	399	356	12,767	13,123
Otter	2002	Fina Exploration Ltd.	2,055	2,179	44,746	46,925
Ninian Pipeline						
Heather	1978	Lundin Heather Ltd.	565	622	117,013	117,635
Ninian	1978	CNR International (UK) Ltd.	5,171	5,485	1,162,540	1,168,025
Magnus	1983	BP	5,992	6,439	812,210	818,649
Lyell	1993	CNR International (UK) Ltd.	500	289	20,631	20,920
Strathspey	1993	Chevron Texaco	795	579	63,143	63,722
Columba E	1998	CNR International (UK) Ltd.	364	135	12,425	12,560
Columba B/D	2000	Ranger Oil	629	405	29,290	29,695
West of Shetland						
Foinaven	1997	BP	11,625	13,503	308,133	321,636
Schiehallion	1998	BP	7,105	4,911	297,619	302,530
Loyal	2000	BP	224	3,764	50,206	53,970
Clair	2005	BP	13,804	10,505	73,159	83,664
Total Crude Oil From Offshore Fields			73,229	66,796	7,789,895	7,856,691

Source: Department of Energy and Climate Change (DECC)

*Calculations on total barrels reached by applying conversion factor - 1 cubic metre (M3) = 6.11 UK barrels (bbl)

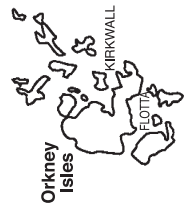
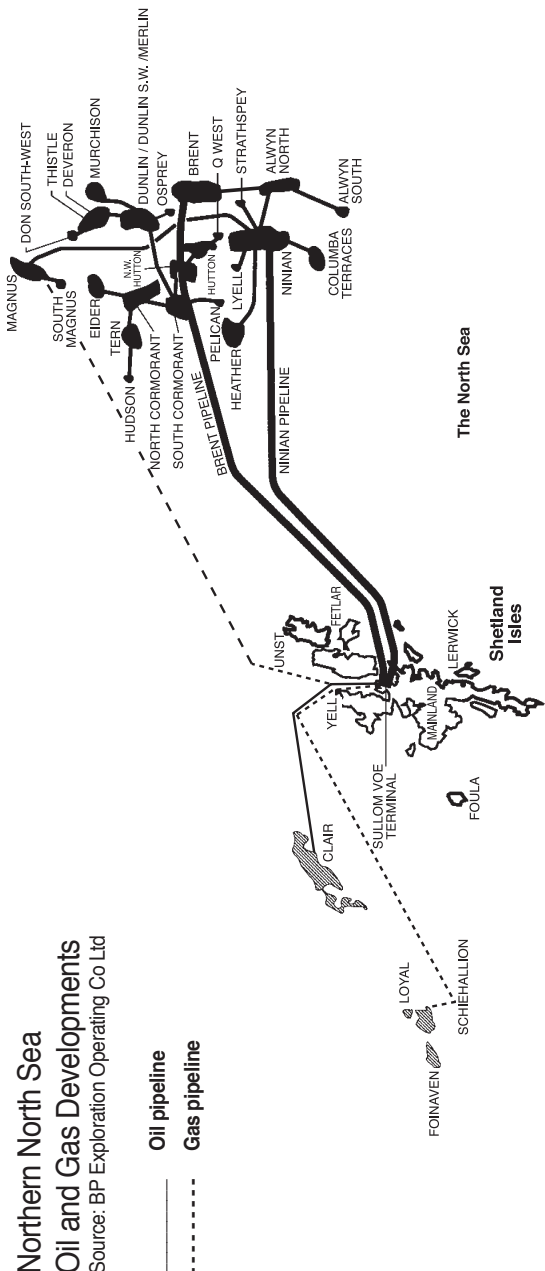
Northern North Sea

Oil and Gas Developments

Source: BP Exploration Operating Co Ltd

Oil pipeline

Gas pipeline



Internal Transport

Internal Air and Sea Transport Infrastructure

Location	Type of Transport	Type of Service*	Surface Type and Dimensions of Airstrip
Unst	SIC Vehicle Ferry		
Yell	SIC Vehicle Ferry		
Fetlar	Air/SIC Vehicle Ferry	Air = Charter only	Soft Gravel (457x18m)
Skerries	Air/SIC Vehicle Ferry		Rolled Gravel (Firm) (381x18m)
Whalsay	Air/SIC Vehicle Ferry	Air = Charter only	Rolled Gravel (Firm) (457x18m)
Scatsta	Air	Air = Charter only	Bituminous (960x28m)
Bressay	SIC Vehicle Ferry		
Tingwall	Air		Bituminous (740x18m)
Sumburgh	Air		Tarmac (1,084x46m) Tarmac (1,426x46m) Tarmac (550x45m)
Fair Isle	Air/SIC Ferry		Rolled Gravel (Firm) (457x18m)
Papa Stour	Air/SIC Ferry		Soft Gravel (457x18m)
Foula	Air/SIC Ferry		Soft Gravel (457x18m)

* All SIC vehicle ferries operate on both a charter and scheduled basis.

Air services operate similarly, except where stated.

Source: Department of Infrastructure Services, SIC

Inter Island Ferries

Shetland Islands Council Ferry Traffic

Passengers

Ferry Route	1976	1986	1996	2001	2006	2008	2009	2010	2011
Bressay	71,615	96,849	219,619	180,675	207,874	217,197	205,000	179,251	192,440
Skerries	–	–	–	–	6,029	5,866	6,393	5,214	5,388
Unst/Fetlar	33,460	40,605	112,852	110,688	138,452	149,130	157,778	***	172,578
Whalsay	23,110	45,888	144,606	138,327	169,359	170,940	162,541	162,658	169,180
Yell	62,626	96,364	193,186	192,661	245,039	236,492	260,399	260,804	254,422
Other routes**	–	–	–	–	3,485	4,252	3,389	***	691
Total	190,811	279,706	670,263	622,351	770,238	783,877	795,500	n/a	797,462

Vehicles

Ferry Route	1976	1986	1996	2001	2006	2008	2009	2010	2011
Bressay	14,817	31,958	66,612	58,829	70,348	71,073	70,121	66,605	70,356
Skerries	–	–	–	–	2,742	2,714	2,837	2,565	2,488
Unst/Fetlar	16,920	28,202	52,034	56,459	71,067	78,355	87,525	***	103,470
Whalsay	10,117	31,660	64,212	62,748	77,192	78,128	76,424	76,502	78,212
Yell	33,333	65,264	97,180	100,889	126,409	130,969	133,298	136,326	133,931
Other routes**	–	–	–	–	1,087	1,246	1,246	***	***
Total	75,187	157,084	280,038	278,925	348,845	362,485	371,451	n/a	389,599

* Prior to 1995 the fare gathering system did not record non-fare paying vehicles and passengers.

** Other routes = Fair Isle, Foula and Papa Stour.

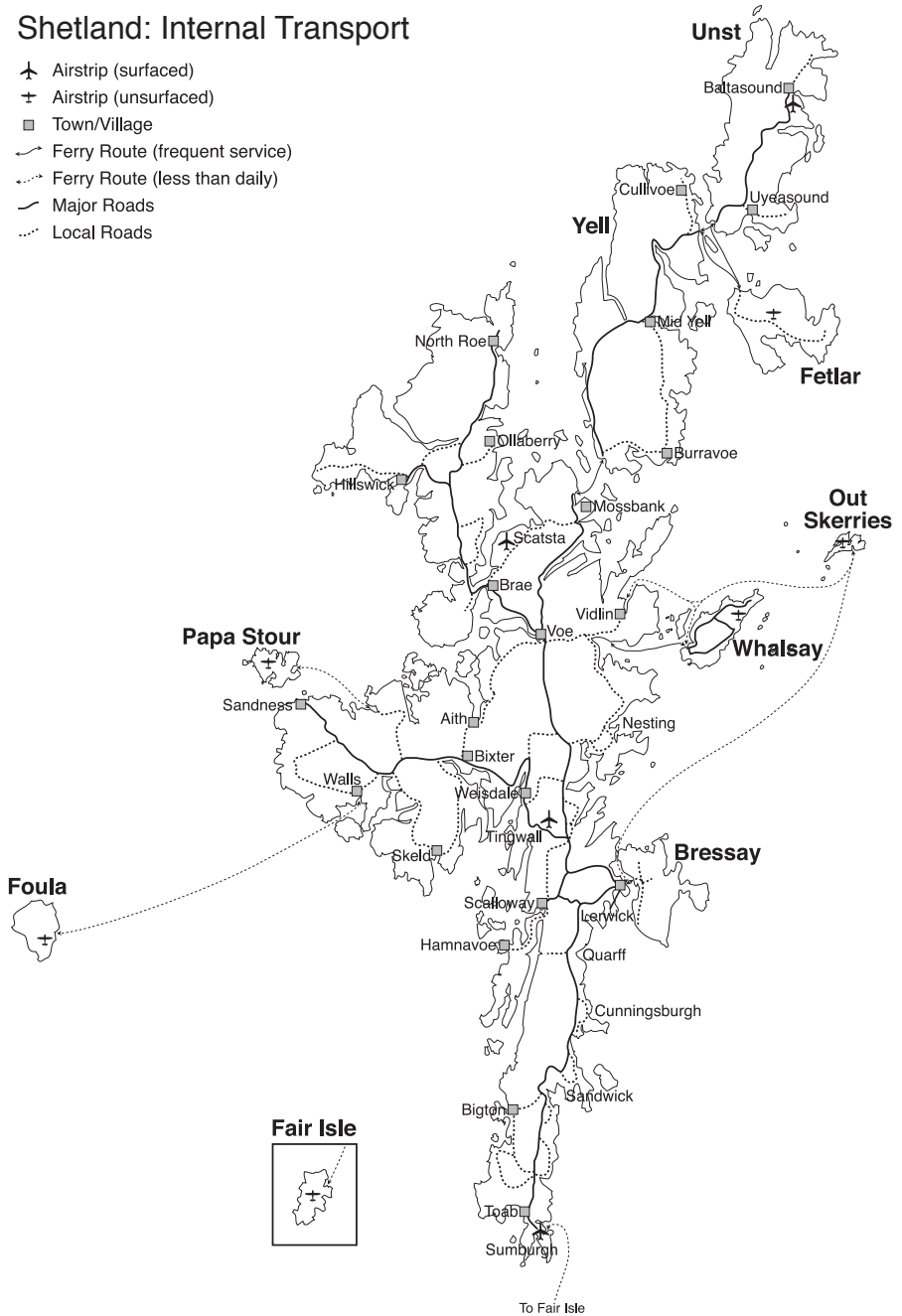
*** These figures were unavailable at time of going to print.

Figures for Skerries and Other routes prior to 2005 were unavailable at time of going to print.

Source: Department of Infrastructure Services, SIC

Shetland: Internal Transport

- ✈ Airstrip (surfaced)
- ✈ Airstrip (unsurfaced)
- ▣ Town/Village
- ↔ Ferry Route (frequent service)
- ⋯ Ferry Route (less than daily)
- Major Roads
- ⋯ Local Roads



Overland Transport

Bus Services

Route	Operator	Passengers		
		2008	2010	
Lerwick to: South Mainland (Sandwich/Sumburgh/ Sumburgh Airport)	J Leask & Son	118,091	106,841	107,597
North Mainland (Hillswick/Mossbank/Toft)	J Leask & Son	63,453	61,179	64,929
	Johnson Transport			
Laxo/Vidlin (for Whalsay)	Andrew's	6,814	11,875	12,567
West Mainland (Walls/Skeld/ Reawick/Aith)	J Leask & Son	42,576	47,400	44,757
Scalloway/Burra	J Leask & Son	58,266	65,800	56,988
Lerwick Town Service	J Leask & Son	95,009	94,099	99,032
Unst Services	P & T Coaches	3,031	4,279	3,316
Yell Services	R G Jamieson	10,436	12,010	12,066
	H Sinclair & Co			
	R Robertson & Son			
Total		397,676	403,483	401,264

Schedule of County Roads

A Class Roads.....	224.6km (139.6 miles)
B Class Roads	161.7km (100.5 miles)
C Class Roads	198.5km (123.4 miles)
Unclassified Roads	462.8km (287.6 miles)
Total	1,047.6km (651.1 miles)

Sources: Department of Infrastructure Services, SIC

Vehicle Ownership

Vehicles licensed in Shetland on 31 December

Type	1976	1981	1991	1996	2001	2006	2007	2008	2010	2011
Private Cars & Light Goods	5,076	7,048	8,933	10,031	10,806	12,467	12,604	12,913	13,340	13,556
Goods/Agricultural Vehicles	640	801	310	231	251	258	252	262	288	293
Public Transport Vehicles	171	164	121	88	81	90	90	94	96	108
Motor Cycles	397	545	287	251	271	415	440	464	503	495
Miscellaneous	826	831	967	889	992	1,173	1,191	1,248	1,287	1,341
Total	7,110	9,389	10,618	11,490	11,932	14,403	14,577	14,981	15,514	15,793

New Vehicle Registrations

Type	2001	2003	2004	2006	2007	2008	2009	2010	2011
Private Cars & Light Goods	906	837	761	796	835	870	899	916	834
Goods Vehicles	15	15	12	17	10	19	20	12	15
Public Transport Vehicles	3	5	3	4	5	3	6	4	7
Motor Cycles	21	32	25	34	31	28	31	15	21
Miscellaneous	76	87	87	107	93	128	111	105	120
Total	1,021	976	888	958	974	1,048	1,067	1,052	997

Sources: 1976: Local Taxation Office

1981 onwards: Department of the Environment, Transport and the Regions

External Ferries

Ferry Services: Passengers and Accompanied Cars Aberdeen – Lerwick

		Passenger Journeys	Accompanied Car Journeys
1971		22,693	n/a
1981		52,531	8,398
1986		63,323	9,788
1991		80,346	11,350
1995		60,669	11,073
1996		62,561	11,734
1999		62,170	11,521
2004		97,924	16,510
2005		101,933	17,255
2006		102,603	16,696
2007		102,385	16,946
2008		101,612	16,739
2009		105,853	16,713
2010		112,241	17,427
2011	January	5,767	791
	February	3,692	573
	March	8,531	1,220
	April	9,370	1,399
	May	10,098	1,567
	June	12,990	2,028
	July	18,519	2,640
	August	13,590	2,092
	September	9,169	1,532
	October	10,442	1,563
	November	5,727	995
	December	5,186	838
	Total	113,081	17,238

Note: Each passenger and car journey is counted one way

Source: P&O Scottish Ferries, NorthLink Orkney & Shetland Ferries

Freight Services

	Aberdeen - Lerwick		Lerwick - Aberdeen	
	2010	2011	2010	2011
Drop Trailer Units	6,916	7,344	6,251	6,787
Self-Propelled Units	1,724	2,043	1,547	1,807
Unaccompanied Cars	1,271	1,198	311	369
Unaccompanied Motorcycles	19	43	7	26
Wide Loads	118	615	21	83

Source: NorthLink Orkney & Shetland Ferries

Lerwick Harbour

Shipping in Lerwick Harbour

	1971	1981	1991	1996	2001	2006	2008	2009	2010	2011
General	316	418	738	662	796	972	947	697	703	763
Oil Tankers	51	140	114	127	105	65	85	67	74	78
Oil Rig Tenders	79	1,556	888	737	319	487	615	362	368	571
Other Vessels	489	430	522	611	1,277	1,219	1,173	1,367	1,291	1,246
Yachts			112	366	317	415	452	430	504	544
British Fishing*	1,440	677	1,606	1,099	829	604	708	792	778	630
Foreign Fishing	1,580	246	216	127	103	130	155	152	132	207
Total	3,955	3,579	4,450	3,680	3,844	3,929	4,113	3,941	3,890	4,026

* Excludes local fishing fleet

Tonnage Handled in Lerwick Harbour

	1971	1981	1991	2001	2008	2010	2011
General Cargo Imports	45,760	200,077	226,715	409,088	436,418	432,559	453,272
General Cargo Exports	48,849	57,471	98,335	325,055	354,175	350,567	327,614
Oil Related Imports	342	288,999	238,684	211,681	55,736	11,516	17,903
Oil Related Exports	0	421,807	315,996	203,685	98,906	50,652	81,310
Total	94,951	968,354	879,730	1,149,509	945,235	845,294	880,099

Weight of containers excluded

Foreign Fishing Vessels in Lerwick Harbour

	1971	1981	1986	1991	1996	2001	2006	2008	2009	2010	2011
Angola		0	0	0	2	0	0	0	0	0	0
Belgium		0	0	0	1	0	0	0	0	0	0
Bulgaria		0	0	3	6	0	0	0	0	0	0
Denmark	374	117	82	66	46	23	34	22	43	34	22
Faroe	242	14	3	19	6	6	20	17	2	0	0
Finland	6	0	0	0	0	0	0	0	0	0	0
France	16	13	13	18	4	8	1	0	3	5	9
Germany	3	1	14	22	10	8	4	1	0	0	1
Greenland	0	0	0	0	0	1	0	0	0	0	0
Iceland	215	2	9	0	0	0	3	1	0	2	0
Ireland	0	0	18	20	12	20	30	38	28	22	60
Netherlands	12	0	16	7	3	1	2	3	2	0	1
Norway	551	96	306	50	43	30	30	66	47	55	105
Poland	1	2	0	0	0	0	4	0	0	0	0
Portugal	0	0	1	0	0	0	0	1	1	1	0
Russia (formerly CIS & USSR)	60	0	39	1	0	1	0	6	0	0	0
Sweden	100	1	5	7	0	5	2	0	26	13	9
Total	1,560	246	509	216	127	103	130	155	152	132	207

Fish Factory Ships and Related Vessels in Lerwick Harbour

1983	1986	1991	1996	2001	2006	2007	2008	2009	2010	2011
41	219	230	249	5	10	5	0	1	1	1

Lerwick Harbour Trust Revenue (£)

1971	1981	1991	2001	2006	2009	2010	2011
49,000	2,100,000	4,576,082	5,761,631	6,884,959	7,453,427	8,176,818	9,066,829

Source: Lerwick Port Authority

Scalloway Harbour

Shipping in Scalloway Harbour

	1986	1991	1996	2001	2006	2007	2008	2009	2010	2011
UK Commercial	11	0	29	61	59	28	30	32	34	13
Foreign Commercial	100	103	147	158	186	128	109	37	33	34
Oil-related	5	1	8	37	6	24	31	44	60	71
UK Fishing	163	207	127	68	72	58	64	75	62	99
Foreign Fishing	17	28	19	12	2	4	1	5	2	20
Yachts	9	33	9	1	10	3	7	3	7	5
Salmon Cages	0	0	21	87	61	65	61	0	0	40
SIC Vessels	0	0	9	15	12	4	6	1	0	6
Other	0	0	19	46	55	69	60	31	14	7
Total	305	372	314	485	463	383	369	228	212	295

Cargo Handling (tonnes)

	1986	1991	1996	2001	2006	2007	2008	2009	2010	2011
Imports	5,037	6,351	11,533	20,405	11,893	9,471	8,592	2,067	6,937	2,937
Exports	16,120	893	14,087	25,616	24,305	25,183	21,858	5,892	18,572	19,695

Scalloway Harbour Revenue (£)

1986/87	1991/92	1996/97	2000/01	2006/07	2007/08	2008/09	2009/10	2010/11	2011/12
160,838	202,598	359,773	218,086	402,091	643,892	553,517	492,579	506,597	592,325

Source: Ports and Harbours, SIC

Air Services

Total Aircraft Traffic at Sumburgh, Scatsta and Tingwall *

	1981	1986	1991	1996	2001	2006	2008	2010	2011
Passengers	784,545	367,053	588,625	524,476	386,844	413,889	422,930	424,220	442,181
Aircraft Movements	52,863	29,457	39,863	34,122	24,896	26,971	27,521	26,818	28,242

* Figures for Unst are included up to 2001

Sumburgh Airport Traffic: Passengers

	Total Passengers	Fixed Wing Scheduled Passengers	Charter Passengers and Others	Helicopter Passengers
1971	46,994	n/a	n/a	n/a
1976	250,778	78,654	84,111	88,013
1978	685,492	90,601	323,151	271,740
1981	541,761	76,853	232,389	232,519
1986	239,744	63,200	77,805	98,739
1996	423,476	125,744	137,384	160,348
2001	168,281	112,146	14,824	41,311
2006	153,251	125,326	9,727	18,198
2007	169,907	134,428	11,301	24,178
2008	174,989	139,850	13,570	21,569
2009	151,669	133,844	5,707	12,118
2010	151,395	131,184	10,160	10,051
2011	143,731	133,481	10,248	n/a

Sumburgh Airport Traffic: Aircraft Movements and Freight

	Total	Fixed Wing	Helicopter	Freight (kgs)*
1971	3,895	n/a	n/a	440,000
1976	25,694	13,030	12,664	1,574,338
1978	50,666	23,843	26,823	1,950,287
1981	34,188	14,361	19,827	3,487,834
1986	15,968	5,621	10,347	1,409,284
1996	25,350	10,202	15,148	1,611,102
2001	11,165	5,635	5,530	90*
2006	12,467	8,375	4,092	86*
2007	14,273	9,007	5,266	104*
2008	15,280	9,347	5,933	144*
2009	12,350	8,421	3,929	53*
2010	11,264	7,954	3,310	268*
2011	12,228	n/a	n/a	315*

Source: Highlands & Islands Airports Ltd.

* Calculated in tons from 2001

UK Airport Passengers ('000)

	1996	2001	2006	2009	2010	2011
Heathrow	55,732	60,675	67,528	66,037	65,882	69,433
Gatwick	24,102	31,182	34,164	32,393	31,375	33,674
Manchester	14,485	19,307	22,443	18,725	17,759	18,893
Stansted	4,810	13,665	23,687	19,957	18,574	18,053
Luton	2,411	6,555	9,426	9,121	8,739	9,514
Edinburgh	3,810	6,067	8,611	9,049	8,597	9,385
Birmingham	5,353	7,809	9,147	9,103	8,572	8,616
Glasgow	5,47	7,292	8,849	7,225	6,549	6,880
Bristol	1,394	2,694	5,758	5,643	5,748	5,781
Liverpool	620	2,253	4,964	4,884	5,014	5,251
Belfast International	2,351	3,619	5,039	4,546	4,016	4,704
Newcastle	2,433	3,413	5,432	4,588	4,356	4,346
East Midlands	1,822	2,387	4,728	4,658	4,114	4,215
Aberdeen	2,377	2,529	3,164	2,984	2,734	3,083
London City	1,053	1,530	2,358	2,797	2,781	2,993
Leeds Bradford	726	1,619	2,793	2,574	2,755	2,977
Belfast City	1,361	1,193	2,106	2,622	2,740	2,397
Southampton	551	858	1,913	1,790	1,734	1,762
Jersey	1,691	1,560	1,509	1,491	1,463	1,491
Prestwick	522	1,240	2,397	1,818	1,663	1,297
Cardiff	1,010	1,544	2,024	1,631	1,405	1,223
Guernsey	891	911	899	937	924	934
Doncaster Sheffield	–	–	948	836	876	823
Exeter	205	344	983	796	745	718
Isle of Man	605	707	785	708	676	702
Bournemouth	162	266	964	871	751	614
Inverness	285	364	692	591	530	582
Norwich	258	390	747	431	426	414
City of Derry	64	186	342	346	339	406
Scatsta	79	247	255	270	279	288
Humberside	279	435	521	337	283	275
Blackpool	85	81	553	277	235	236
Newquay	–	–	370	387	315	216
Durham Tees Valley	444	734	906	289	226	192
Kirkwall	92	94	128	150	141	146
Sumburgh	401	137	133	141	140	144
Stornoway	94	88	121	123	114	126
Isles of Scilly (Tresco)	26	40	44	35	34	113
Penzance Heliport	106	128	94	86	89	75
Alderney	84	72	77	75	70	70
Dundee	13	49	52	72	70	62
Isles of Scilly (St. Marys)	125	133	131	121	115	42
Southend	6	4	30	4	4	42
Plymouth	98	172	100	158	129	37
Lands End (St. Just)	–	–	23	35	30	35
Benbecula	38	34	34	33	30	35
Islay	19	20	26	26	25	26
Wick	28	26	28	22	23	25
Gloucestershire	–	–	0.1	21	17	15
Barra	8	9	10	10	10	10
Campbeltown	7	8	9	10	9	9
Tiree	5	5	7	8	8	8
Tingwall	4	2	4	5	5	5
Oxford (Kidlington)	–	–	–	1	2	1
Shoreham	3	1	5	1	1	0.6
Cambridge	29	18	1	1	1	0.6
Lydd	–	1	3	1	0.5	0.5
Coventry	3	1	611	167	–	–
Kent International	2	6	10	6	–	–
Biggin Hill	6	4	0.2	–	–	–
Hawarden	–	3	–	–	–	–
Unst	18	0.25	–	–	–	–
Total: All UK airports	138,632	184,711	238,686	222,024	214,243	222,844

Source: Civil Aviation Authority

Scatsta Airport Traffic

	1981	1991	1996	2001	2006	2007	2008	2010	2011
Passengers	109,063	14,495	78,807	247,131	255,164	252,905	243,087	279,482	288,264
Aircraft Movements	5,758	630	4,461	11,223	12,355	11,269	10,696	13,841	14,475

Source: Civil Aviation Authority

Tingwall Airport Traffic

	1981	1991	1996	2001	2006	2007	2008	2010	2011
Passengers	12,180	15,453	4,382	4,747	5,474	5,614	4,854	4,609	5,181
Aircraft Movements	2,815	2,917	2,582	2,394	2,149	2,052	1,545	1,859	1,539

Source: Department of Infrastructure Services, SIC

Small Airfield Traffic

Passengers

Airfield	1981	1986	1991	1996	2001	2006	2008	2009	2010
Fair Isle	841	1,822	2,048	1,910	2,030	2,363	2,684	2,573	2,553
Fetlar	57	60	n/a	n/a	n/a	n/a	n/a	n/a	n/a
Foula	1,175	1,100	n/a	1,344	1,296	1,322	1,410	1,200	1,222
Papa Stour	n/a	n/a	n/a	n/a	238	206	141	156	104
Skerries	271	624	900	545	840	621	627	651	449
Whalsay	80	100	360	n/a	n/a	n/a	n/a	n/a	n/a
Total	2,424	3,706	3,308	3,799	4,404	4,512	4,862	4,476	4,328

Aircraft Movements

Airfield	1981	1986	1991	1996	2001	2006	2008	2009	2010
Fair Isle	238	480	610	632	605	570	659	713	688
Fetlar	52	40	n/a	n/a	n/a	n/a	n/a	n/a	n/a
Foula	310	304	466	687	492	454	470	509	450
Papa Stour	n/a	n/a	n/a	n/a	155	121	122	103	96
Skerries	138	302	400	408	570	359	315	306	233
Whalsay	78	70	200	n/a	n/a	n/a	n/a	n/a	n/a
Total	816	1,196	1,676	1,727	1,822	1,504	1,566	1,630	1,467

Sources: Loganair; Department of Infrastructure Services, SIC

Education and Training

Staffing

	1971	1981	1986	1991	1996	2001	2006	2007	2008	2009	2010	2011
Nursery Teachers	–	–	–	–	11	16	19	19	15	17	18	17
Primary Teachers	91	164	150	140	177	176	200	192	185	179	170	161
Secondary Teachers	88	142	162	189	198	206	222	191	198	209	206	187
Further Education Lecturers	2	9	13	18	47	61	54	59	79	75	58	77
Total	181	315	325	347	433	459	495	461	477	480	452	442

From 1996 FE lecturers include NAFC Marine Centre lecturers

Source: Schools, SIC; Scottish Government

Further Education

Enrolment on Shetland College Courses

	1971	81/82	91/92	96/97	01/02	05/06	06/07	07/08	08/09	09/10	10/11
Full Time	20	68	77	141	173	104	154	129	120	125	80
Part Time	20	54	36	1,627	1,810	4,989	5,748	4,064	4,264	4,266	4,286
Evening Class	557	1,171	1,336	1,072	1,063	866	1,064	1,389	1,065	1,386	304
Total	597	1,293	1,449	2,840	3,046	5,959	6,966	5,582	5,449	5,777	4,670

Source: Shetland College, Adult Learning, SIC

*Includes Train Shetland Short Courses

Students Enrolled on NAFC Marine Centre Courses

	1992	1993	1994	1996	2001	2003	2006	2008	2009	2010	2011
Business Courses		0	19	19	21	10	14	0	0	0	0
Aquaculture Courses		9	24	13	25	30	16	17	6	12	67
Fisheries Science		0	0	0	10	0	45	0	0	0	0
Marine Engineering		25	24	50	68	80	69	62	101	104	105
Maritime Studies		79	180	264	381	333	526	562	416	437	338
Processing Courses		0	0	46	24	143	51	0	0	0	0
Courses run by Third Parties		131	321	267	243	321	148	189	234	243	170
Total		244	568	659	772	917	869	794	757	796	680

Source: NAFC Marine Centre

Secondary Education

School Roll	1976	1981	1986	1991	1996	2001	2006	2007	2008	2009	2010	2011
Aith Junior High	65	61	61	61	70	83	92	98	105	102	105	102
Anderson High	770	915	933	878	855	820	877	814	786	799	752	899
Baltasound Junior High	58	75	47	33	55	37	38	36	26	26	27	26
Brae High	68	164	263	211	242	265	234	238	232	222	228	220
Mid Yell Junior High	58	48	56	44	55	47	50	50	39	50	40	37
Sandwick Junior High	87	121	130	144	166	173	179	174	184	172	177	169
Scalloway Junior High	129	132	144	179	153	129	122	122	112	115	118	0
Skerries School	6	5	7	2	2	7	2	1	2	3	3	4
Whalsay School	54	62	49	45	50	70	60	61	60	61	60	57
Total	1,295	1,583	1,690	1,597	1,648	1,631	1,654	1,594	1,546	1,550	1,510	1,514

From 2004 figures are taken from the September school roll. Prior to that figures were taken from the January school roll.

Primary Education

School Roll	1976	1981	1986	1991	1996	2001	2006	2008	2009	2010	2011
Aith Junior High	63	52	77	61	58	90	90	70	57	57	58
Baltasound Junior High	100	106	71	85	72	54	20	25	24	23	29
Bell's Brae Primary	790	501	416	357	383	376	312	312	305	308	302
Brae High	68	171	170	139	152	105	110	107	107	107	98
Bressay Primary	38	2-0	21	28	40	42	29	20	13	17	11
Burravoe Primary	31	36	29	32	26	19	8	14	11	11	11
Cullivoe Primary	23	24	24	18	15	12	15	15	20	20	22
Cunningsburgh Primary	74	77	59	50	60	59	57	64	62	72	74
Dunrossness Primary	152	209	149	146	155	138	116	112	111	103	104
Fair Isle Primary	9	11	8	8	5	17	8	8	9	10	9
Fetlar Primary	6	15	9	7	13	4	4	2	1	0	2
Foula Primary	4	7	7	4	5	2	3	2	1	2	2
Gruting Primary	11	9	-	-	-	-	-	-	-	-	-
Hamnavoe Primary	65	107	110	96	78	63	51	51	43	47	49
Happyhansel Primary	40	48	55	57	58	48	42	52	48	42	41
Haroldswick Primary	33	21	30	25	14	-	-	-	-	-	-
Lunnasting Primary	22	38	26	21	26	31	29	20	20	24	25
Mid Yell Junior High	76	65	53	48	47	49	47	48	47	43	49
Mossbank Primary	-	136	117	70	85	73	53	47	42	40	36
Nesting Primary	14	26	21	11	14	29	23	27	21	20	14
North Roe Primary	16	23	17	20	22	12	12	10	9	8	7
Ollaberry Primary	12	16	29	36	27	22	23	16	15	14	15
Olnafirth Primary	30	46	44	31	29	28	21	27	31	22	19
Papa Stour Primary	-	5	3	4	0	2	-	-	-	-	-
Quarff Primary	19	23	21	15	10	12	-	-	-	-	-
Sandness Primary	7	15	21	13	17	12	8	5	6	8	7
Sandwick Junior High	81	96	65	69	86	86	104	100	96	96	94
Scalloway Junior High	136	150	138	117	96	83	102	107	124	127	119
Skeld Primary	26	36	19	14	24	18	24	25	21	20	21
Skerries Primary	12	11	8	9	8	4	3	5	4	6	3
Sound Primary	-	292	400	354	338	339	291	277	306	320	312
Tingwall Primary	43	52	50	50	39	62	50	57	64	57	68
Urafirth Primary	29	37	33	29	28	29	21	15	12	14	11
Uyeasound Primary	27	16	8	9	21	17	8	9	11	11	11
Whalsay School	149	146	121	125	110	98	105	100	84	83	87
Whiteness Primary	56	87	68	85	100	89	81	83	84	80	82
Total	2,262	2,730	2,505	2,243	2,261	2,124	1,870	1,831	1,809	1,812	1,792

Skillseekers/Modern Apprentices

	99/00	00/01	01/02	03/04	04/05	05/06	06/07	07/08	08/09	09/10	10/11
Shetland	142	110	121	141	150	158	142	130	142	111	273

Source: Skills Development Scotland

Nursery Education

School Roll	1981	1991	1996	2001	2006	2008	2009	2010	2011
Aith Junior High	0	0	14	22	13	14	12	15	12
Baltasound Junior High	0	0	0	15	8	10	9	12	14
Bell's Brae	0	64	75	44	50	55	58	45	49
Brae High	51	60	40	27	39	28	22	16	20
Bressay	0	0	0	8	4	5	3	4	4
Cunningsburgh	–	–	–	–	19	25	17	22	22
Dunrossness	0	33	31	25	26	21	23	27	25
Fair Isle	0	0	0	0	1	2	1	0	1
Fetlar	0	0	0	1	0	0	0	2	0
Foula	0	0	0	1	0	0	0	0	1
Happyhansel	0	0	17	13	13	13	14	17	14
Lunnasting	–	–	–	–	–	–	–	–	9
Mid Yell	0	0	0	16	14	26	23	24	22
Mossbank	0	23	29	17	15	13	13	9	12
Papa Stour	–	–	–	–	0	0	0	0	0
Sandwick Junior High	0	38	30	26	16	20	24	20	24
Scalloway Junior High	0	0	0	18	8	25	20	21	20
Skeld	0	0	0	7	6	5	2	6	7
Skerries	0	0	0	1	0	1	4	1	0
Sound	60	60	58	40	51	57	39	46	38
Urafirth	0	0	10	8	12	6	5	6	6
Whalsay Junior High	0	0	19	19	25	24	15	15	12
Whiteness	0	0	0	17	19	25	17	20	19
Total	111	278	323	325	339	375	324	332	331

Source: Schools, SIC

Social Care Provision

The following services are provided by Shetland Islands Council Social Care Services except where stated otherwise:

	2008/09	2009/10	2010/11	2011/12
Local Authority Beds for Older People	129	129	146	146
Voluntary Sector Beds for Older People*	16	16	16	16
Day Care Places for Older People**	95	95	95	95
Places in Hostel for Adults with Learning Disabilities	9	9	9	9
Independent Living for Adults with Learning Disabilities	33	33	31	32
Places in Children's Homes	7	7	7	8
Places for Mentally/Physically Disabled Children – Respite Care	6	6	6	6
Laundries	0	0	0	0
Meals on Wheels Schemes***	20	20	32	13
Luncheon Clubs****	4	4	4	4
Meals Delivered	38,707	36,181	71,714	38,116
Care at Home – Clients receiving Domestic Tasks	329	323	330	301
Care at Home – Clients receiving Personal Care*****	255	256	263	264
Homes Connected to Community Alarm System	540	632	671	677

*Voluntary sector beds for older people are provided by the Church of Scotland.

**The Church of Scotland provide up to 10 of the day care places for older people.

***MOW includes meals prepared in Care Homes and School Kitchens

****One provided by SIC, two provided by WRVS, and one by Dunrossness Church Fellowship.

*****Food preparation now classed as Personal Care by Scottish Government. One provided by SIC, two provided by WRVS and one by Dunrossness Church Fellowship

Social Care, Housing and NHS Shetland jointly manage one scheme of sheltered housing providing 10 places for people who have mental health needs. Annsbrae Social Care and Housing jointly manage one scheme of very sheltered housing (20 units) mainly for older people.

Source: Community Services, SIC

Health

Health services in Shetland are provided by Shetland Health Board, which in 2010/11 received a revenue grant of £44,455,951 from the Scottish Government.

Health Board Expenditure * (£ per head of population)

	1986/87	1996/97	2001/02	2006/07	2007/08	2008/09	2009/10	2010/11
Shetland	312	862	1,356	1,944	2,034	2,235	2,349	1,889
Scottish average	392	813	1,087	1,736	1,851	1,927	1,983	1,816

* Net Operating Expenditure

Staffing

	1986	1991	1996	2001	2006	2008	2009	2010	2011
Medical (hospital, community & public)	12	15	14	19	23	32	24	26	24
Hospital nursing & Midwifery	194	251	240	212	269	253	256	241	186
Scientific & professional	37	37	52	77	103	113	125	123	62
Administration and clerical	43	59	72	73	136	136	147	155	119
Social care & support	102	110	10	9	16	21	22	25	69
General medical practitioners (GPs)	20	20	24	22	29	33	36	31	n/a
Dental (hospital, community & public) & medical dental support	4	7	8	8	14	23	25	25	55

Hospital Activity

In Patients	2004/05	2005/06	2006/07	2007/08	2008/09	2009/10	2010/11
Day Cases	1,822	1,874	1,853	1,892	1,973	2,211	4,468
Elective inpatients *	1,450	1,394	1,263	1,256	1,280	1,189	–
Emergency inpatients	1,857	2,051	2,084	1,916	1,934	1,935	1,891
Transfers	438	450	408	378	328	342	396
All in patients	5,567	5,769	5,608	5,442	5,515	5,677	6,755
Out Patients	2004/05	2005/06	2006/07	2007/08	2008/09	2009/10	2010/11
Accident & Emergency	9,729	9,515	9,953	9,206	9,676	9,364	n/a
Other Specialities	14,717	14,235	14,993	15,818	16,384	15,405	15,530
All out patients	24,446	23,750	24,946	25,024	26,060	24,769	n/a

Source: Information & Statistics Division, National Health Service in Scotland

* Elective inpatients is recorded in Day Cases from 2011

Housing & Property

Ownership of dwellinghouses in Shetland

Type of Dwelling	1976	1981	1991	1996	2001	2006	2009	2010	2011
Local Authority & Housing Association	2,082	2,713	2,566	2,455	2,543	2,198	2,188	2,220	2,242
Private and others	5,205	5,899	6,590	7,110	7,334	8,002	8,295	8,370	8,432
Total	7,287	8,612	9,156	9,565	9,877	10,165	10,483	10,590	10,677

Source: Assessor & Electoral Registration Office, Lerwick

Marinas

Location	Marina	Depth
Central Mainland	Blacksness Pier, Scalloway	7.0 - 4.8m (3.5m at low level quay)
	Bridge End, Burra	1.5m*
	East Voe, Scalloway	6m
	Hamnavoe, Burra	10m (anchorage)
	Port Arthur, Scalloway	5.0 - 2.0m
	Scalloway Boating Club Pontoon	4m
Lerwick & Bressay	Bressay	2m*
	Gremista, Lerwick	2.5m (outer pontoons); 1.8m (inner pontoons)*
	Victoria Pier, Lerwick	8m (mouth of dock); 1.2m (inner corner)*
North Mainland	Brae	2m (inside breakwater)
	Collafirth	2m (marina); 9m (pier)
	Vidlin	1.7m*
	Voe	3.75m*
	West Coast	Anchor in 6m
North & Outer Isles	Baltasound, Unst	1.5m (marina); 5m (pier)*
	Burravoe, Yell	2m (marina)*; 2m (pier)
	Cullivoe, Yell	1.2m (marina); 6m (pier)
	Fair Isle	4m*
	Mid Yell	2.0 - 3.5m (marina); 1.5m (pier)
	Skerries	3m (marina); 3m (pier)*
	Ulista, Yell	2.3m
Whalsay	5m (inner basin); 7m (outer basin)	
South Mainland	Virkie	1m*
West Mainland	Aith	1.2m*
	Skeld	2.5m
	Walls	1.5m (marina); 1.5m (boating club); 4.0m (pier)*
	West Burrafirth	4m (pier)

* low water

Source: Visit Shetland

Golf Facilities in Shetland

Dale Golf Course (18 holes)

Whalsay Golf Course (18 holes)

Asta Golf Course (9 holes)

Knab Golf Course (9 holes)

Crime

The Shetland Area Command of the Northern Constabulary is run by the Northern Joint Police Board, administered by Highland Council. In 2012/13, the requisition from Shetland Islands Council was £1,651,288.

Police Stations 2011

Single Officer Police Stations: 3 (Baltasound, Mid Yell and Whalsay)

Section Stations under Sergeant-in-Charge: 1 (Brae)

Shetland Command Area Headquarters: 1 (Lerwick)

Police Office based at Sumburgh Airport

Police Establishment

1971	1981	1986	1991	1996	2001	2005	2008	2009	2010	2011
21	45	36	36	37	38	37	38	38	38	38

Crimes and Offences reported to the Police

	1981	1991	1996	2001	2006	2007	2008	2009	2010	2011
Group 1	24	21	14	32	33	15	16	18	28	32
Group 2	12	3	8	7	24	20	21	35	26	30
Group 3	352	279	347	264	269	266	309	370	368	240
Group 4	126	199	235	188	247	255	294	270	166	183
Group 5	83	53	151	106	209	202	224	154	149	189
Group 6	422	322	471	292	595	575	607	460	389	533
Group 7	874	1,278	524	697	700	689	603	521	833	452
Total	1,893	2,155	1,750	1,586	2,077	2,022	2,074	1,828	1,959	1,659

Group 1: Non-sexual crimes against the person

Group 2: Crimes involving indecency

Group 3: Crimes involving dishonesty

Group 4: Fire-raising, malicious and reckless conduct

Group 5: Other crimes

Group 6: Miscellaneous

Group 7: Offences relating to motor vehicles

The detection rate in respect of crimes as detailed in groups 1-5 above was 74.9% in 2011.

Source: Northern Constabulary

Fire Service

The Fire Service in Shetland is run by Highland and Islands Fire and Rescue Service, administered by Highland Council. In 2012/13, the requisition from Shetland Islands Council was £2,196,170.

Fire Units in Shetland 2011

Location	Current Staff	Appliances
Retained Stations:		
Baltasound	10	1 Water Tender Appliance
Bixter	12	1 Water Tender Appliance
Brae	13	2 Water Tender Appliances
Bressay	7	1 Light Fire Appliance
Fair Isle	7	1 MIDI Fire Appliance
Fetlar	3	1 Light Fire Appliance
Foula	6	1 Light Fire Appliance
Hillswick	8	1 Light Fire Appliance
Lerwick	22	2 Water Tender Appliances
Mid Yell	9	1 Water Tender Appliance
Sandwick	13	1 Water Tender Appliance
Scalloway	12	1 Water Tender Appliance
Skerries	9	1 Light Fire Appliance
Sumburgh	9	1 Water Tender Appliance
Walls	7	1 Light Fire Appliance
Whalsay	13	1 Water Tender Appliance
Community Response Units:		
Hamnavoe	1	CFS* only – non-operational
Mossbank	5	CFS only – non-operational
Papa Stour	1	CFS only – non-operational
Total Retained and CRUs	167	
District Staff Total:	4	

*Community Fire Safety

Fires Attended

	1986	1991	1996	2001	2006	2008	2009	2010	2011
Chimney fire	64	66	50	27	7	22	6	9	23
Special services (pumping out boats, properties, road traffic accidents)	9	40	19	25	46	30	41	30	41
Property and small fires	42	54	45	62	49	37	41	46	39
False alarms, good intent	26	42	84	114	90	153	164	144	112
False alarms, malicious	4	3	22	7	3	3	2	6	6
Total	145	205	220	235	195	245	274	235	221

Source: Highland and Islands Fire Brigade, Inverness

Energy

Electricity Generation

	1971/72	1981/82	1991/92	2001/02	2006/07	2008/09	2010/11
Units Generated (kilowatt hours)	32,319,000	143,539,222	170,023,850	230,600,000	217,060,000	216,610,000	217,740,000
Maximum demand (megawatts)	11.69	36.0	41.2	45.2	48.1	48.8	46.7

Electricity Distribution (km)

	1971	1981	1991	2001	2009	2010	2011
33,000 Volt overhead lines	24.7	98.0	128.3	167.3	173.7	173.7	175.7
33,000 Volt underground cables	0.0	3.7	11.6	10.7	11.4	11.4	12.0
11,000 Volt overhead lines	705.9	756.2	843.0	812.2	818.3	822.1	825.3
11,000 Volt underground cables	15.1	65.5	99.3	110.8	113.1	116.1	117.6
Low Voltage overhead lines	340.1	345.6	324.5	227.4	227.4	227.4	227.4
Low Voltage underground cables	18.9	65.6	122.7	219.0	226.5	230.0	235.0

Figures from 1991 onwards are approximations only

Source: Scottish Hydro-Electric, Lerwick

Renewable Energy

Renewable Energy Projects in Shetland by Type and Ownership Total Installed Capacity in kW

	Commercial	Community	Household	Public	Total
Wind	3,783	410	175	12	4,380
Solar	–	19	98	5.6	122.6
Hydro	–	12	3	–	15
District Heating	–	10,000	–	–	10,000
Biomass	–	400	–	–	400
Total	3,783	10,841	276	17.6	14,917.6

Source: Shetland Renewable Energy Forum, Economic Development, SIC

Water and Wastewater Services

Water and wastewater services in Shetland are provided by Scottish Water. Scottish Water is a public corporation created in April 2002 from the merger of the three predecessor water authorities: North of Scotland, West of Scotland and East of Scotland Water Authorities. Scottish Water is the fourth largest water operator in the UK with a turnover of almost £1 billion and five million customers. It operates within a regulatory framework set up by Ministers and involving independent regulators, the Drinking Water Quality Regulator (DWQR), the Water Industry Commission (WIC) and the Scottish Environment Protection Agency (SEPA). The Shetland Area office of Scottish Water (Duncan House) is located at Upper Sound, Lerwick.

Water Supplied (millions of litres)

1976	1981	1986	1991	1996	2001	2006	2007	2008	2010	2011
2,627	4,964	4,607	4,691	3,990	4,104	3,994	3,914	3,840	3,856	*

Many thousands of water samples are taken throughout Shetland during each year. These are analysed and compared against a number of bacterial and chemical parameters as specified in the Water Supply (Water Quality) (Scotland) Regulations 1990.

Microbiological Quality (percentage compliance at W.T.W.S.)

1991	1996	1998	1999	2000	2001	2006	2007	2008	2010	2011
97.20	99.18	99.87	99.81	99.91	99.94	99.77	99.87	99.93	100	*

Networks

		1999	2006	2007	2008	2010	2011
Water connections:	Domestic	9,502	9,750	9,870	9,939	*	*
	Non-domestic	1,119	1,168	1,183	1,187	*	*
Sewer connections:	Domestic	6,701	6,831	6,901	6,938	*	*
	Non-domestic	712	744	758	761	*	*
Length of water mains (km)		1,005	1,015	1,015	1,017	1,066	*
Length of sewers (km)		365	370	370	372	372	*

Treatment

	1999	2002	2005	2006	2007	2008	2010	2011
Wastewater treatment plants (incl. septic tanks)	60	64	79	81	81	83	82	*
Water treatment works (excl. re-chlorination stations)	18	18	14	14	14	13	13	*

Scottish Water maintains a programme for the decommissioning of small and inefficient rural waterworks and for the linking of these supply zones to larger works such as Lerwick (Sandy Loch) or Northmavine (Eela Water). This ensures better control of water quantity and quality.

* data not available

Source: Scottish Water, Lerwick

Built Heritage

Buildings of Special Architectural or Historic Interest

Scottish Ministers compile lists of Buildings of Special Architectural or Historic Interest in order that such buildings may be identified and appropriate measures for their conservation can be taken. The list for Shetland is sub-divided into categories. Category A buildings are of national and international importance whilst those in Category C are of more local interest, of lesser importance or altered.

	Cat. A	Cat. B	Cat. C	Total	List Published
Bressay	1	10	3	14	26/03/97
Delting	0	10	4	14	26/03/97
Dunrossness	2	19	8	29	26/03/97
Fetlar	1	2	4	7	30/03/98
Lerwick	2	57	46	105	12/08/96
Lerwick Landward	0	1	1	2	26/03/97
Nesting	0	14	8	22	30/03/98
Northmavine	0	10	8	18	26/03/97
Sandsting and Aithsting	1	7	6	14	26/03/97
Tingwall	2	10	29	41	28/07/00
Unst	3	10	12	25	30/03/98
Walls and Sandness	0	13	10	23	30/03/98
Yell	1	10	18	29	30/03/98
Total	13	173	157	343	

Scheduled Monuments

There were 391* scheduled monuments as at November 2012 in the following categories:

Prehistoric: ritual and funerary	98	Ecclesiastical	21
Prehistoric: domestic and defensive	211	Secular	24
Crosses and carved stones	2	Industrial	12
		20th Century Military & related	3

* Some monuments appear in more than one category. Eight monuments are in the care of the Scottish Ministers.

Source: Planning, SIC

Sites and Monuments Record

Shetland Amenity Trust maintains the Shetland Sites and Monuments Record, a record of all the known sites in Shetland. The record is constantly expanding, both as the result of survey work being carried out by the Trust's Archaeology team, visiting universities, and reports from the general public. The record incorporates sites of all periods, up to and including the crofting period, the Second World War and the Cold War.

The current number of recorded archaeological sites is 8,066.

These include:	Broch/possible broch	141	Souterrains	27
	Burnt mounds	346	Military remains	445
	Chambered cairns	120	Fishing Stations	34
	Viking/Norse houses	53	Wheelhouses	8

Source: Shetland Amenity Trust

Nature Conservation

Scottish Natural Heritage is the independent government agency responsible for safeguarding and enhancing Scotland's countryside and wildlife, and promoting the understanding and enjoyment of the natural heritage.

Statutory Conservation Sites in Shetland*

2 National Nature Reserves (NNR):	Herma Ness (Seabird Colony)	980.3 ha
	Noss (Seabird Colony)	313.0 ha

81 Sites of Special Scientific Interest (SSSI)

Geology – 33 sites	Marsh and Meadow – 7 sites	Rare Plants – 9 sites
Geomorphology – 7 sites	Limestone Grassland – 1 site	Seabirds – 18 sites
Montane Habitats – 1 site	Sand Dune Flora – 3 sites	Moorland Birds – 15 sites
Serpentine Vegetation – 4 sites	Trees and Woodland – 4 sites	Wildfowl – 2 sites
Other Heathland – 5 sites	Intertidal Habitats – 5 sites	Cliff Vegetation – 2 sites
Peatland – 5 sites	Aquatic Flora & Fauna – 8 sites	Mammals – 4 sites

Note: Some sites are notified for more than one feature of interest.

12 Special Protection Areas, covering 17 of the ornithological SSSIs have been designated under the EC Birds Directive. A further 12 sites comprising 11 SSSIs and 1 non-SSSI area have been designated as Special Areas of Conservation under the EC Habitats Directive.

Total area covered by statutory conservation sites is 19,852 hectares which represents 13.5 per cent of the total area of Shetland.

Approximate area coverage:

Foula – 2 sites	100%	Noss – 1 site	100%
Fetlar – 6 sites	70%	Mainland & uninhabited islands	
Fair Isle – 1 site	66%	– 45 sites (1 shared with Yell)	9%
Papa Stour – 1 site	79%	Yell – 9 sites (1 shared with Mainland)	4%
Unst – 15 sites	21%	Muckle Roe – 1 site	0.1%

Source: Scottish Natural Heritage, Lerwick

Wildlife

Latest population estimates for selected species are as follows:

Species	Population	Proportion of GB population
Red-necked Phalarope	15-20 breeding males	90%
Whimbrel (tang-whaup)	300 pairs	95%
Great Skua (bonxie)	6,800 pairs	71%
Arctic Skua (skootie alan)	600 pairs	52%
Red-throated Diver (raingoose)	400 pairs	40%
Arctic Tern (tirrick)	25,000 pairs	44%
Fulmar (maalie)	180,000 pairs	38%
Black Guillemot (tystie)	16,000 adults	41%
Shag (skarf)	6,000 pairs	21%
Puffin (tammie norie)	100,000 pairs	18%
Gannet (solan)	39,000 pairs	12%
Grey Seal (selkie)	3,000 individuals (excluding pups)	2.5%
Otter (dratsie)	800 - 1,000 individuals	12%
Common Seal (selkie)	3,500 + individuals	15%

Source: Shetland Amenity Trust



Scottish Natural Heritage
Dualchas Nàdair na h-Alba

Protected Areas in Shetland

-  Special Area of Conservation
-  Special Protection Area
-  Ramsar site:
Wetland of International Importance
-  Site of Special Scientific Interest
- greater than 450 hectares
-  Site of Special Scientific Interest
- less than 450 hectares
-  National Nature Reserve
-  National Scenic Area



FOULA



FAIR ISLE



Produced by the Geographic Information Group. ID: 52119 - September 2012
 © Reproduced by permission of Ordnance Survey on behalf of HMSO.
 © Crown copyright and database right 2012. All rights reserved. Ordnance
 Survey Licence number SNH 100017908.

Community Councils

Community Council	Clerk	Tel.
Bressay	Mr James Shepherd, Calijor, 10 Fullaburn, Bressay	(01595) 820376 (Home)
Burra & Trondra	Mrs Joyce Adamson, Aister, Hamnavoe, Burra	(01595) 859426 (Home)
Delting	Mrs Alison Foyle, Grace Dieu, Skellister, South Nesting	(01595) 890213 (Home)
Dunrossness	Mrs Shirley Leslie, Ringesta, Quendale	(01950) 460868 (Home)
Fetlar	Ms Martha Devine, New House, Mid Brake, Cullivoe, Yell	(07721) 918764 (Mobile)
Gulberwick, Quarff & Cunningsburgh	Mrs Jolene Clark, Bodral, Cunningsburgh	(01950) 477663 (Home)
Lerwick	Mrs Katrina Semple, Community Council Office, Stouts Court, Lerwick	(01595) 692447 (Office)
Nesting & Lunnasting	Mrs Eva Ganson, Lochend, Girsta	(01950) 840460 (Home)
Northmavine	Ms Maree Hay, c/o Greenbrae, South Collafirth	(01806) 544222 (Office)
Sandness & Walls	Mr Douglas A Forrest 1 Kirkdale, Walls	(01595) 809746 (Home)
Sandsting & Aithsting	Ms Laurena Fraser, West Burrafirth, Bridge of Walls	(01595) 809203 (Home)
Sandwick	Mrs Rosemary Inkster, Wainui, Hoswick, Sandwick	(01950) 431284 (Home)
Scalloway	Mrs Edna Nicol, Da Neean, Scarfataing, Trondra	(01595) 880892 (Home)
Skerries	Mrs Marina Tait, Emohruo, East Isle, Skerries	(01806) 515245 (Home)
Tingwall, Whiteness & Weisdale	Mrs Margaret Smith, Stenaquoy, Wormadale	(01595) 840480 (Home)
Unst	Mrs Josie McMillan, Rockfield, Haroldswick, Unst	(01957) 711554 (Home)
Whalsay	Ms Kathleen Jamieson, Lochview, Vatshoull, Whalsay	(01806) 566676 (Home)
Yell	Mrs Jacqueline Smiles, Brough House, Burravoe, Yell	(01957) 722289 (Home)
Association of Shetland Community Councils	Kate Massie Market House, 14 Market Street, Lerwick	(01595) 743906 (Office)

Source: Association of Shetland Community Councils

Electoral Statistics

Scottish Parliamentary Election results in the Shetland Constituency:

MAY 2011

Constituency Result	
Tavish Scott (Scottish Liberal Democrat)	4,462
Billy Fox (Independent).....	2,845
Jean Urquhart (SNP).....	1,134
Jamie Kerr (Lab).....	620
Sandy Cross (Con).....	330

Regional List Result (Shetland)	
Scottish Liberal Democrats.....	2,975
Scottish National Party	2,688
Scottish Labour Party	974
Scottish Green Party.....	699
Scottish Conservative and Unionist Party.....	595
UK Independence Party	362
The Liberal Party.....	319
Christian Party "Proclaiming Christ's Lordship"	196
All Scotland Pensioners' Party	170
Ban Bankers' Bonuses	153
British National Party	66
Socialist Labour Party.....	65
Scottish Socialist Party	57
Solidarity.....	15

Electorate: 17,505

Turnout: 9,391 (54%)

Source: Governance & Law, SIC

Turnout: 9,334 (53%)

General Election results in the Orkney and Shetland UK Parliamentary Constituency:

MAY 2005

Alistair Carmichael (Lib Dem)	9,138
Richard Meade (Lab).....	2,511
Frank Nairn (Con).....	2,357
John Mowat (SNP)	1,833
John Aberdein (SSP).....	992
Scott Dyble (UKIP)	424
Paul Cruickshank.....	311
Brian Nugent (Free Scotland Party).....	176

Electorate: 32,369

(Shetland: 16,855; Orkney: 15,784)

MAY 2010

Alistair Carmichael (Lib Dem).....	11,989
Mark Cooper (Lab)	2,061
John Mowat (SNP).....	2,042
Frank Nairn (Con & Un Party).....	2,032
Robert Smith (UKIP).....	1,222

Majority: 9,928 (51.3%)

Electorate: 33,208

(Shetland: 17,157; Orkney: 16,051)

Turnout: 19,346 (58.3%)

European Assembly Election results in the Scottish Region:

JUNE 2009

Scottish National Party	321,007
Scottish Labour Party	229,853
Scottish Conservative and Unionist Party	185,794
Scottish Liberal Democrats	127,038
Scottish Green Party	80,442
United Kingdom Independence Party.....	57,788
British National Party	27,174
Socialist Labour Party.....	22,135
Christian Party "Proclaiming Christs Lordship"	16,738
Scottish Socialist Party	10,404
Duncan Robertson, Independent.....	10,189
No2EU: Yes to Democracy	9,693
Jury Team	6,257

(Voting in Shetland)

Scottish Liberal Democrats.....	1,438
Scottish National Party	760
Scottish Conservative and Unionist Party	557
Scottish Green Party	435
Scottish Labour Party	362
United Kingdom Independence Party.....	288
Christian Party "Proclaiming Christs Lordship"	105
British National Party	92
Scottish Socialist Party.....	54
No2EU: Yes to Democracy	50
Socialist Labour Party	35
Jury Team	30
Duncan Robertson, Independent.....	29

Shetland Turnout: 24.8%

Scottish MEPs: Ian Hudghton (Scottish National Party), David Weir Martin (Scottish Labour Party), Struan Stevenson (Conservative & Unionist Party), Alyn Edward Smith (Scottish National Party), George Lyon (Scottish Liberal Democrats), Catherine Stihler (Scottish Labour Party)

Shetland Islands Council

Members (May 2012 – May 2017)

Ward

North Isles
(64.06% poll)

Councillor

Gary Cleaver
1 Hillsgarth, Baltasound, Unst
Steven Coutts
Glenlea, Weisdale
Robert Henderson
Maraberg, Cullivoe, Yell

Shetland North
(58.39% poll)

Alastair T J Cooper
Linga, Mossbank
Andrea Manson
Greystones, Brae
Drew Ratter
Gaets a Voe, Ollaberry

Shetland West
(63.87% poll)

Gary Robinson
17 Burnside, Lerwick
Theo Smith
Stenaquoy, Wormadale, Whiteness
Frank A Robertson
Columbus, Selivoe, Bridge of Walls

Lerwick North
(51.28% poll)

Malcolm Bell
Edgcott, 23 St Olaf Street, Lerwick
Michael Stout
Kirkabister, Bressay
Allan S Wishart
Seafield Lodge, Lower Sound, Lerwick

Lerwick South
(55.33% poll)

Peter Campbell
8 Sandyloch Drive, Lerwick
Cecil L Smith
Faravel, Bousta, Sandness
Amanda Westlake
Moya Dotcha, 41 Burgh Road, Lerwick
Jonathan W G Wills
Sundside, Bressay

Shetland Central
(55.88% poll)

Mark Burgess
Mayburn Cottage, Ladysmith Road, Scalloway
David A Sandison
Bonhoga, 7 Castle Street, Scalloway
Vaila Wishart
Eden Cottage, Setter, Burra

Shetland South
(63.67% poll)

Allison G L Duncan
1 Hillock, Dunrossness
Billy Fox
Brennek, Quarff
George Smith
Breasclete, Sandwick

Shetland Islands Council area

Electoral arrangements

Ward 2
Shetland North
Alistair Cooper
Drew Ratter
Andrea Manson

Ward 1
North Isles
Steven Couatts
Gary Cleaver
Robert Henderson

Ward 3
Shetland West
Frank Robertson
Gary Robinson
Theo Smith

Ward 6
Lerwick North
Malcolm Bell
Michael Stout
Allan Wishart

Ward 4
Shetland Central
Mark Burgess
David Sandison
Vaila Wishart

Ward 7
Lerwick South
Peter Campbell
Cecil Smith
Amanda Westlake
Jonathan Wills

Ward 5
Shetland South
Allison Duncan
Billy Fox
George Smith



Shetland Islands Council Departments

EXECUTIVE SERVICES

Office Headquarters, 8 North Ness,
Lerwick ZE1 0LZ
Mark Boden, Chief Executive

Member Support Service

Town Hall, Hillhead, Lerwick
ZE1 0HB
Peter Peterson, Executive Manager

Internal Audit

Office Headquarters, 8 North Ness,
Lerwick ZE1 0LZ
Crawford McIntyre, Executive
Manager

CHILDREN'S SERVICES

Hayfield House, Hayfield Lane,
Lerwick ZE1 0QD
Helen Budge, Director

Children & Families

Fort Road, Lerwick ZE1 0LW
Hughina Leslie, Executive Manager

Children's Resources

Hayfield House, Hayfield Lane,
Lerwick ZE1 0QD
Martha Nicolson, Executive Manager

Shetland Library

Lower Hillhead, Lerwick ZE1 0EL
Karen Fraser, Executive Manager

Psychological Services

2 Bank Lane, Lerwick ZE1 0DS
Sarah Jamieson, Principal
Educational Psychologist

Quality Improvement

Hayfield House, Hayfield Lane,
Lerwick ZE1 0QD
Audrey Edwards, Executive Manager

Schools

Hayfield House, Hayfield Lane,
Lerwick ZE1 0QD
Shona Thompson, Executive
Manager

Sport & Leisure

Hayfield House, Hayfield Lane,
Lerwick ZE1 0QD
Neil Watt, Executive Manager

COMMUNITY SERVICES

Kantersted Office, Seafield Road,
Lerwick ZE1 0WZ
Christine Ferguson, Director

Adult Services

Kantersted Office, Seafield Road,
Lerwick ZE1 0WZ
Clare Scott, Executive Manager

Community Care Resources

91-93 St Olaf Street, Lerwick
ZE1 0ES
Ruby Whelan, Executive Manager

Community Care Social Work

Address
Vacant, Executive Manager

Criminal Justice Service

91-93 St Olaf Street, Lerwick
ZE1 0ES
Denise Morgan, Executive Manager

Mental Health

1 Annsbrae House, Lerwick ZE1 0BP
Jeff Shaw, Executive Manager

Occupational Therapy

31 Commercial Street, Lerwick
ZE1 0AN
Jo Robinson, Executive Manager

CORPORATE SERVICES

Office Headquarters, 8 North Ness,
Lerwick ZE1 0LZ
Christine Ferguson, Director

Capital Programmes

Office Headquarters, 8 North Ness,
Lerwick ZE1 0LZ
Robert Sinclair, Executive Manager
Capital Programme

Finance

Office Headquarters, 8 North Ness,
Lerwick ZE1 0LZ
James Gray, Executive Manager

Governance & Law

Office Headquarters, 8 North Ness,
Lerwick ZE1 0LZ
Jan-Robert Riise, Executive Manager

Human Resources

Office Headquarters, 8 North Ness,
Lerwick ZE1 0LZ
Denise Bell, Executive Manager

ICT

Garthspool, Lerwick ZE1 0NY
Stuart Moncrieff, Executive Manager

Performance & Improvement

Office Headquarters, 8 North Ness,
Lerwick ZE1 0LZ
John Smith, Executive Manager

DEVELOPMENT SERVICES

Solarhus, 3 North Ness Business
Park, Lerwick ZE1 0LZ
Neil Grant, Director

Community Planning & Development

Office Headquarters, 8 North Ness,
Lerwick ZE1 0LZ
Vaia Simpson, Executive Manager

Economic Development

Solarhus, 3 North Ness Business
Park, Lerwick ZE1 0LZ
Douglas Irvine, Executive Manager

Housing

6 North Ness Business Park, Lerwick
ZE1 0LZ
Anita Jamieson, Executive Manager

Planning

Grantfield, Lerwick ZE1 0NT
Iain McDiarmid, Executive Manager

Transport Planning

Solarhus, 3 North Ness Business
Park, Lerwick ZE1 0LZ
Michael Craigie, Executive Manager

Shetland College UHI

Gremista, Lerwick ZE1 0PX
David Gray, Executive Manager

INFRASTRUCTURE SERVICES

Grantfield, Lerwick ZE1 0NT
Phil Crossland, Director

Environmental Health & Trading Standards

Grantfield, Lerwick ZE1 0NT
Maggie Dunne, Executive Manager

Ferry Operations

Port Admin., Sella Ness, Sullom Voe
ZE2 0QR
Ken Duerden, Executive Manager

Harbour Master & Port Operations

Port Admin., Sella Ness, Sullom Voe
ZE2 0QR
Colin Reeves, Executive Manager

Roads

Grantfield, Lerwick ZE1 0NT
Vacant, Executive Manager

Environment & Transport

Gremista, Lerwick ZE1 0PX
Carl Symons, Acting Executive
Manager, Building and Transport

Shetland Islands Council Finance

Shetland Islands Council Service Expenditure

Net Annual Revenue Expenditure by Committee including the Harbour Account and Housing Revenue Account (HRA)	2011/12 Actual Spend £'000
Education and Families	45,087
Social Services (including HRA)	25,874
Development	18,879
Environment and Transport	26,353
Executive	16,174
Harbour Board	-2,492
Shetland College Board	-197
Financing Expenses	895
Total Expenditure	130,574
Funded by:	
Revenue Support Grant	-77,690
Non-Domestic Rates	-14,308
Council Tax	-8,752
Transfers from Reserves	-29,824
Total Income	-130,574

Rating and Valuation

	1996/97*	2001/02	2007/08	2008/09	2010/11	2011/12
	Pence per £	Pence per £	Pence per £	Pence per £	Pence per £	Pence per £
Non-Domestic Rates						
General	44.90	47.00	44.10**	45.80	40.70	42.60
Water	9.75	9.76	2.70	2.78	2.832	2.90
Sewerage	8.06	9.61	4.32	4.44	4.59	4.76
Total	62.71	66.37	51.12	53.02	48.12	50.26

	1996/97*	2001/02	2007/08	2008/09	2010/11	2011/12
	Pence per £	Pence per £	Pence per £	Pence per £	Pence per £	Pence per £
Council Tax (Band D)						
General	443.21	747.00	1,053.00	1,053.00	1,053.00	1,053.00
Sewerage	65.50 gross 4.50 net	157.55	194.13	201.33	210.06	211.41
Water	116.00	166.50	171.72	178.20	183.51	182.16
Total	563.71	1,371.60	1,418.85	1,432.53	1,446.57	1,446.57

* Domestic sewerage charges were subject to transitional relief grants, hence the gross and net figures given above for 1996/97. Prior to 2003/04 water and sewerage rates were set by individual local authorities. From 1 April 2003 rates were set nationally for the whole of Scotland.

** Properties over 29,000 Rateable Value Rate Poundage = 46.55

Council Tax 2010/11

Band	Property Value	General Fund Council Tax (£)
A	Up to £27,000	702.00
B	£27,001 – £35,000	819.00
C	£35,001 – £45,000	936.00
D	£45,001 – £58,000	1,053.00
E	£58,001 – £80,000	1,287.00
F	£80,001 – £106,000	1,521.00
G	£106,001 – £212,000	1,755.00
H	Over £212,001	2,106.00

Source: Finance, SIC

Culture and Media

Shetland Interest Books – Best Sellers 2010

1 The Shetland Bus David Howarth	6 Shetland's Heritage of Sail Charlie Simpson
2 Around Shetland: A Picture Guide	7 And Then Forever Christine De Luca
3 Willie's Tales & Travels Willie Smith	8 Sea View A. Christie-Johnston
4 Cows, Cars & Rucksacks Magnus Shearer	9 Oscar Charlie Eve Eunson
5 Hoswick Man Martin Smith	10 Shetland Dictionary John J. Graham

Source: Shetland Times Bookshop

Media Av. Sales per issue

The Shetland Times	Weekly	10,329	(Jan – Jun '11)
Shetland Life	Monthly	1,926	(Jan – Jun '11)
New Shetlander	Quarterly	1,400	(Jan – Dec '12)
ii Shetland	Monthly	3,500	(Jan – Dec '10)

Sources: The Shetland Times and Shetland Council of Social Service

Local Radio

BBC Radio Shetland	5 nights weekly
SIBC (Shetland Islands Broadcasting Company)	24 hr

Shetland Interest Publications

General Interest

£

Around Shetland: A Picture Guide		
Hedderwick, Mairi	Shetland Rambles: A Sketching Tour	
Holmes, Robin	The Holiday Planning Guide to Shetland	14.99
Hutton, Guthrie	Old Shetland	
Johnson, Robert	Da Wye I Saa It	
McMillan, Ron	Between Weathers	11.99
Penrith, James & Deborah	Scottish Islands: Orkney and Shetland	12.99
Strachan, John	A Raft in the Pool	9.99
Tallack, Malachy & Riddington, Roger	Fair Isle Through the Seasons	
Tait, Charles	The Shetland Guide Book	12.95
Uney, Graham	Portrait of the Northern Isles	14.99

Economy, Archaeology and History

£

Armit, Ian	Towers in the North: The Brochs of Shetland	17.99
Ballantyne, John & Smith, Brian	Shetland Documents 1580-1611	7.50
Charlton, Edward	Travels in Shetland 1832-52	10.99

Coull, James R	Fishing, Fishermen, Fish Merchants and Curers in Shetland	15.00
Davis, Graeme	The Early English Settlements of Orkney and Shetland	9.99
Donaldson, G	Court Book of Shetland 1615-1629	8.50
Downes, Jane	Prehistoric Houses at Sumburgh in Shetland	20.00
Fojut, Noel	Prehistoric and Viking Shetland	19.99
Flaws, Margaret	Spy Fever: The Post Office Affair	14.99
Graham, John	A Vehement Thirst After Knowledge: Four Centuries of Education in Shetland	20.00
Graham, L & Smith, B (Ed)	McDairmid in Shetland	7.95
Hobbin, Agnes	A Peerie Peek at da Past	8.99
Hofman, Ethel	Mackerel at Midnight	9.99
Howarth, David	The Shetland Bus	7.99
Inkster, Karen	Voices from the Past	14.99
Irvine, James W	Good Old Days	7.50
Irvine, James W	Meandering	10.50
Irvine, James W	The Final Curtain	9.00
Iversen, Kaare	The Shetland Bus Man	
Johnston, J Laughton	Victorians 60 Degrees North	32.00
Johnston, J Laughton	A Kist of Emigrants	
Martin, Simon	The Other Titanic	17.99
Miller, James	The North Atlantic Front	9.99
Morris, Jeff	The History of the Lerwick Lifeboats	3.00
Munro, Alison	Small Boats of Shetland	
Nicolson, James R	The Swan – Shetland's Legacy of Sail	9.99
Prior, Mary	Fond Hopes Destroyed – Breach of Promise Cases in Shetland	9.99
Robertson, J D M	The Press Gang in Orkney and Shetland	
Robson, Adam	The Saga of the Earls	30.00
Sandison, Bruce	Memoirs of a Lerwick Boy	11.99
Sandison, Ronald	Christopher Sandison of Eshaness (1781-1870) – Diarist in an Age of Social Change	24.00
Scott, Ian G. & Ritchie, Anna	Pictish & Viking Age Carvings from Shetland	
Scott, Wendy & Finnie, Mike	Belmont: The Rescue of a Shetland Country House	
Scott, Wendy	Guardie: A Shetland House and its People	Hbk 30.00; Pbk 16.99
Simpson, C	Water in Burgidale: Shetland Fisheries in a Pre-electronic Age	
Simpson, C	Shetland's Heritage of Sail	
Sinclair, Douglas M	A Glimpse of Lerwick's Waterfront History	
Smith, Brian	Toons & Tenants: Settlement & Society in Shetland 1299-1899	13.99
Smith, Willie	Willie's War and Other Stories	9.99
Smith, Willie	Willie's Tales and Travels	
Sørvaag, Trygve	The Shetland Bus 1940-45 – Faces and Places 60 Years On	25.00
Simmons, David	Shetland Crofter Postie	8.99
Strachan, David	As Time Goes By	8.99
Strachan, David	My Memory is Free	9.99
Tait, Ian	Shetland Vernacular Buildings 1600-1900	
Taylor, Marsali	Women's Suffrage in Shetland	
Wheatcroft, Kay & Sinclair, Mark	Shetland: A Love Story	

Natural Environment and Wildlife

£

Christie-Johnston, A	Sea View	
Copland, John	Hardy Plants in the North	5.99

Dalby, Kery; Dalby, Claire	Shetland Lichens	12.00
Dymond, J	The Birds of Fair Isle	5.95
Gammack, Joyce	A Shetland Nature Diary	9.95
Guy, Peter	Walking the Coastline of Shetland, No. 2 (Unst)	9.99
Guy, Peter	Walking the Coastline of Shetland, No. 3 (Fetlar)	10.99
Guy, Peter	Walking the Coastline of Shetland, No. 4 (Northmavine)	9.99
Guy, Peter	Walking the Coastline of Shetland, No. 5 (Westside)	9.99
Guy, Peter	Walking the Coastline of Shetland, No. 6 (South Mainland)	8.99
Guy, Peter	Walking the Coastline of Shetland, No. 7 (Eastside)	9.99
Hunter, Margaret	Shetland Ponies	17.99
Johnston, J Laughton	A Naturalist's Shetland	45.00
Malcolm, David	Shetland's Wild Flowers	
McKirdy, Alan	Orkney and Shetland: A Landscape Fashioned by Geology	
Okill, Dave etal	The Birds of Shetland	40.00
Russell, V	Shetland Ponies	15.99
Sands, Heidi M	The Spirit of the Shetland Pony	
Scott, Walter; Harvey, Paul;		
Riddington, Roger; & Fisher, Morag	Rare Plants of Shetland	21.75
Uney, Graham	Walking on the Orkney & Shetland Isles	

Language, Folklore, Fiction, Poetry, Food and Music	£
--	----------

Anderson, Tom	The Tom Anderson Collection, Volume One	9.95
Anderson, Tom	Ringin' Strings	9.00
Ed. Blance, Mary & Johnson, Laureen	Bright Pebbles	
Christie-Johnson, A & A	Shetland Words	
Christie-Johnston, Alistair	Nor Heard the Clock Strike	8.99
Christie-Johnston, Alistair	Ninian Plate	
Cluness, A T	Told Round the Peat Fire	9.95
Cluness, Alex	Shetland and Other Poems	5.99
Cooper, Davy	Viking Stories	5.00
Cooper, Susan	Key Notes: The History of the Lerwick Orchestra	9.00
De Luca, Christine	Wast Wi' Da Valkyries	8.99
De Luca, Christine	Smootie and the Toon Hall Clock	
De Luca, Christine	And Then Forever	
Graham, John J & Graham, Laurence I	A Shetland Anthology	
Greig, Charles	A Rich Heritage	6.99
Hallett, Nigel	Da Roup & Other Tunes	7.50
Jamieson, F & R	Leveneep Head	9.00
Jamieson, F & R	Vidlin Voe	7.50
Johnson, Laureen	Shetland Black	8.99
Johnston, J. Laughton	A Dream of Silver	8.99
Moncrieff, Mike	Jeemsie da Jarl – A Grand Old Viking Century	7.99
Morton, Tom	The Further North You Go	7.99
Nicol, Jessie	Sonnets and Secrets	9.99
Peterson, George P S	Aald Papa, I'm Dine!	
Polson, Sam	Unst Fiddle Tunes	6.50
Ritch, P J	Mother Wave – Collection of Verse	6.95
Robertson, T A & Graham, J	Grammar and Usage of the Shetland Dialect	6.95
Shetland Folklore Development Group	Da Book O Trows	Hbk 20.00; Pbk 15.00
Stove, Magnus J	The Shetland Violinist	6.50
Stove, Thomas G	Running for a Fry	14.99

Stove, Thomas G	Tunes Fae Da Auld Rock	
Stove, Thomas G (Ed)	The Tunes of Gideon Stove	
Tulloch, Lawrence	The Foy and Other Folk Tales	10.99
Vigor, Millie	Kippers For Breakfast	8.99
Watt, Jessie	Holm Sweet Holm	12.00
Watt, Valerie	Da Peesterleeties an da Curse o da Njuggle	7.99
Watt, Valerie	Peerie Mootie an her Muckle Buits	7.99
Watt, Valerie	Bobby and Da Burland Pearls	
Wills, Jonathan	Wilma Widdershins and Da Muckle Tree	7.99
Williamson, Kari	Storm Child	
Williamson, Kari	Berries on the Heather	8.99

Knitting

£

Amedro, Gladys	Shetland Lace	22.00
Feitelson, Ann	The Art of Fair Isle Knitting	
Guy, Lucinda	Northern Knits	
Laurenson, Sarah	Knit Real Shetland	
Macgregor, Mary	Fair Isle Knitting Patterns	11.99
McGregor, Sheila	Traditional Fair Isle Knitting	
Miller, Sharon	Heirloom Knitting	30.00
Miller, Sharon	Shetland Hap Shawls	
Mucklestone, Mary Jane	200 Fair Isle Designs	
Starmore, Alice	Book of Fair Isle Knitting	
Various authors	Real Shetland Yarns	

