

SHETLAND CORE PATHS PLAN



Area Proposal - Gulberwick, Quarff and Cunningsburgh CPPGQC1- 6

Key facts
Number of routes: 6
Total distance: 18.5km
Total population: 1386

CPPGQC01: Brindister Loch
Difficulty: easy
Surface: grass
Attraction: dog walking route and popular fishing loch

CPPGQC02: Fladdabister old road
Difficulty: easy
Surface: old tarred road
Attraction: community circular route

CPPGQC03: Fladdabister
Difficulty: moderate to locally challenging
Surface: grass
Attraction: scenery and flora and fauna attracts visitors to area. Area also used by absailers to access coast

CPPGQC04: Leebitton to Cunningsburgh
Difficulty: moderate to locally challenging
Surface: grass and rocks
Attraction: coastal route between two villages

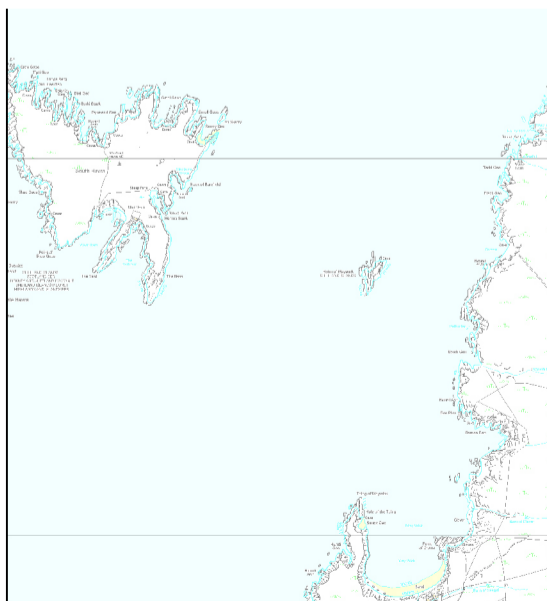
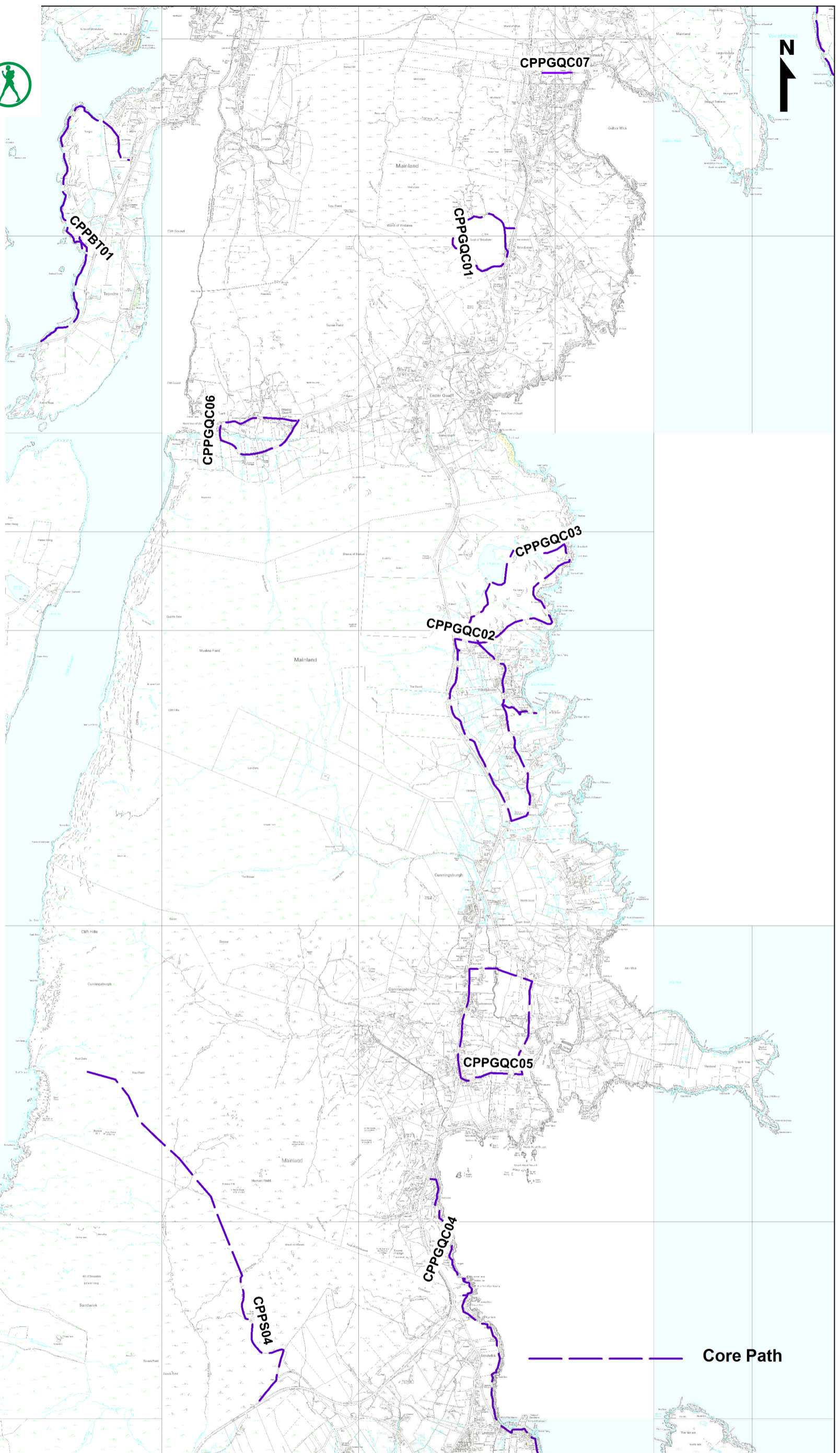
CPPGQC05: Cunningsburgh Circular
Difficulty: easy
Surface: single track road, pavement and grass track
Attraction: community route and safe route to school
Designation: SSSI

CPPGQC06: Wester Quarff
Difficulty: easy
Surface: single track road and grass track
Attraction: community route
Designations: NSA

CPPGQC07: Henie Track
Difficulty: moderate
Surface: grass
Attraction: community link route

The population in Gulberwick, Quarff and Cunningsburgh has significantly increased in recent years. The core paths reflect these changes in the amount of community routes available. Also there is opportunity for fishing in this central area.

Please see more detailed maps on following pages.

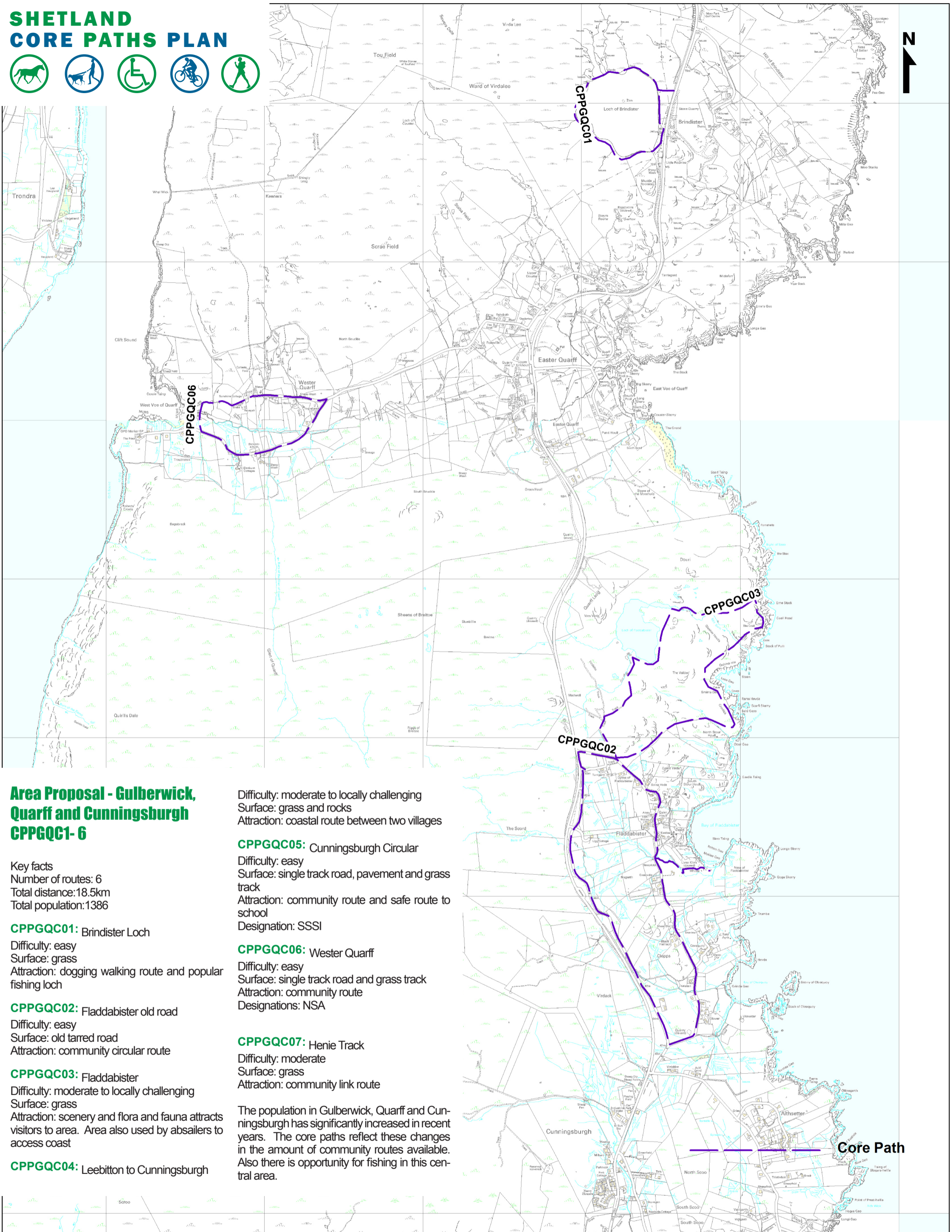


Reproduced by permission of Ordnance Survey on behalf of HMSO.
© Crown copyright and database right 2015. All rights reserved. Ordnance Survey Licence number 100024344.

Scale: 1:40000
Size: A3
Date: July 2015



SHETLAND CORE PATHS PLAN



Area Proposal - Gulberwick, Quarff and Cunningsburgh CPPGQC1- 6

Key facts
 Number of routes: 6
 Total distance: 18.5km
 Total population: 1386

- CPPGQC01:** Brindister Loch
 Difficulty: easy
 Surface: grass
 Attraction: dogging walking route and popular fishing loch
- CPPGQC02:** Fladdabister old road
 Difficulty: easy
 Surface: old tarred road
 Attraction: community circular route
- CPPGQC03:** Fladdabister
 Difficulty: moderate to locally challenging
 Surface: grass
 Attraction: scenery and flora and fauna attracts visitors to area. Area also used by absailers to access coast
- CPPGQC04:** Leebitton to Cunningsburgh

Difficulty: moderate to locally challenging
 Surface: grass and rocks
 Attraction: coastal route between two villages

CPPGQC05: Cunningsburgh Circular
 Difficulty: easy
 Surface: single track road, pavement and grass track
 Attraction: community route and safe route to school
 Designation: SSSI

CPPGQC06: Wester Quarff
 Difficulty: easy
 Surface: single track road and grass track
 Attraction: community route
 Designations: NSA

CPPGQC07: Henie Track
 Difficulty: moderate
 Surface: grass
 Attraction: community link route

The population in Gulberwick, Quarff and Cunningsburgh has significantly increased in recent years. The core paths reflect these changes in the amount of community routes available. Also there is opportunity for fishing in this central area.

Core Path

SHETLAND CORE PATHS PLAN

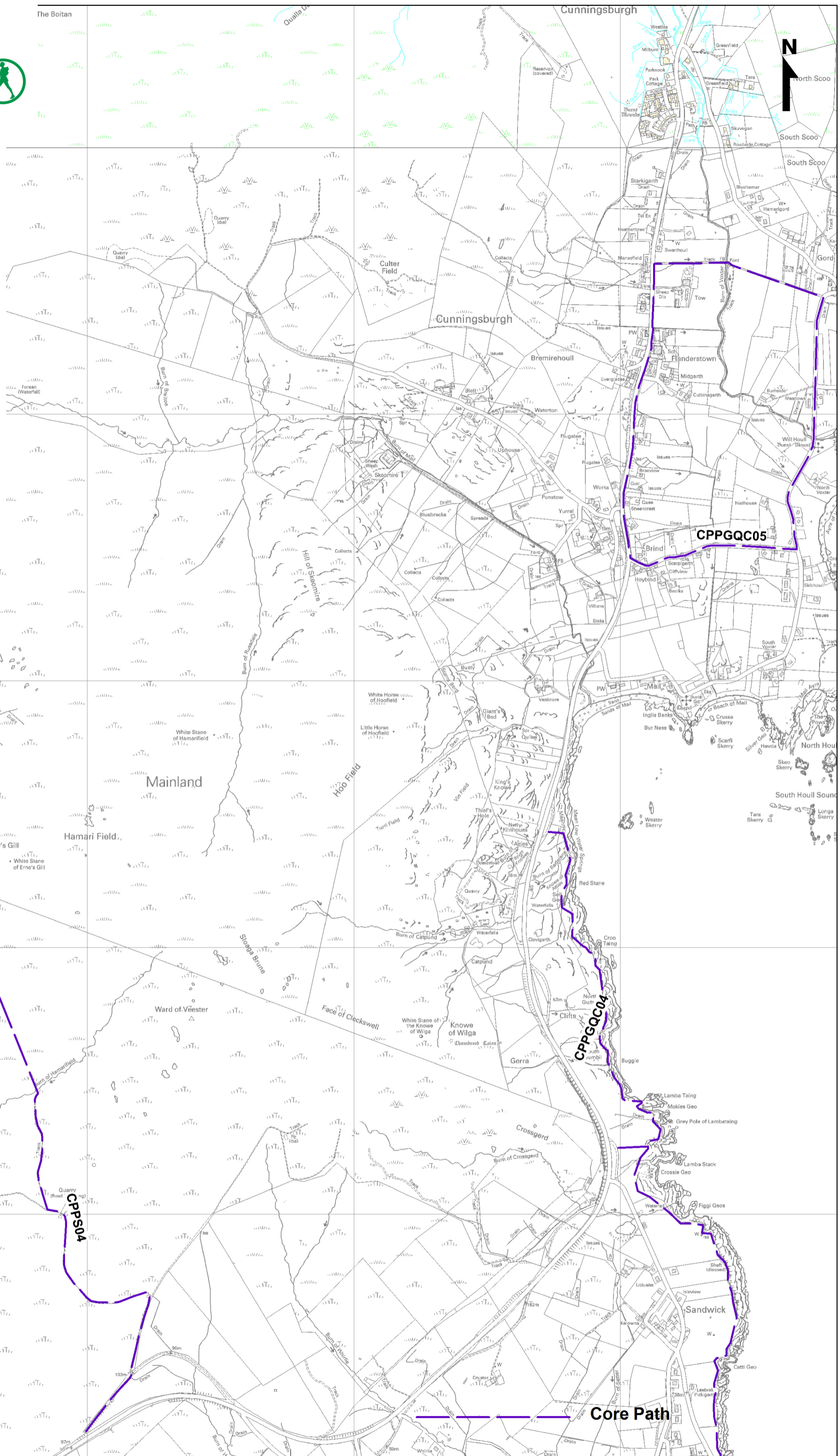


Area Proposal - Gulberwick, Quarff and Cunningsburgh CPPGQC 4&5

Key facts
 Number of routes: 6
 Total distance: 18.5km
 Total population: 1386

CPPGQC04: Leebiton to Cunningsburgh
 Difficulty: moderate to locally challenging
 Surface: grass and rocks
 Attraction: coastal route between two villages

CPPGQC05: Cunningsburgh Circular
 Difficulty: easy
 Surface: single track road, pavement and grass track
 Attraction: community route and safe route to school
 Designation: SSSI



Reproduced by permission of Ordnance Survey on behalf of HMSO.
 © Crown copyright and database right 2015. All rights reserved. Ordnance Survey Licence number 100024344.

Scale: 1:NTS
 Size: A3
 Date: July 2015

